



Spare parts for:

Bar equipment

Suitable for:

VEMA



This catalogue is automatically generated.
Therefore, the sequence of the items might
not be always shown at best.
Updates will be issued in case of additions
and/or amendments.

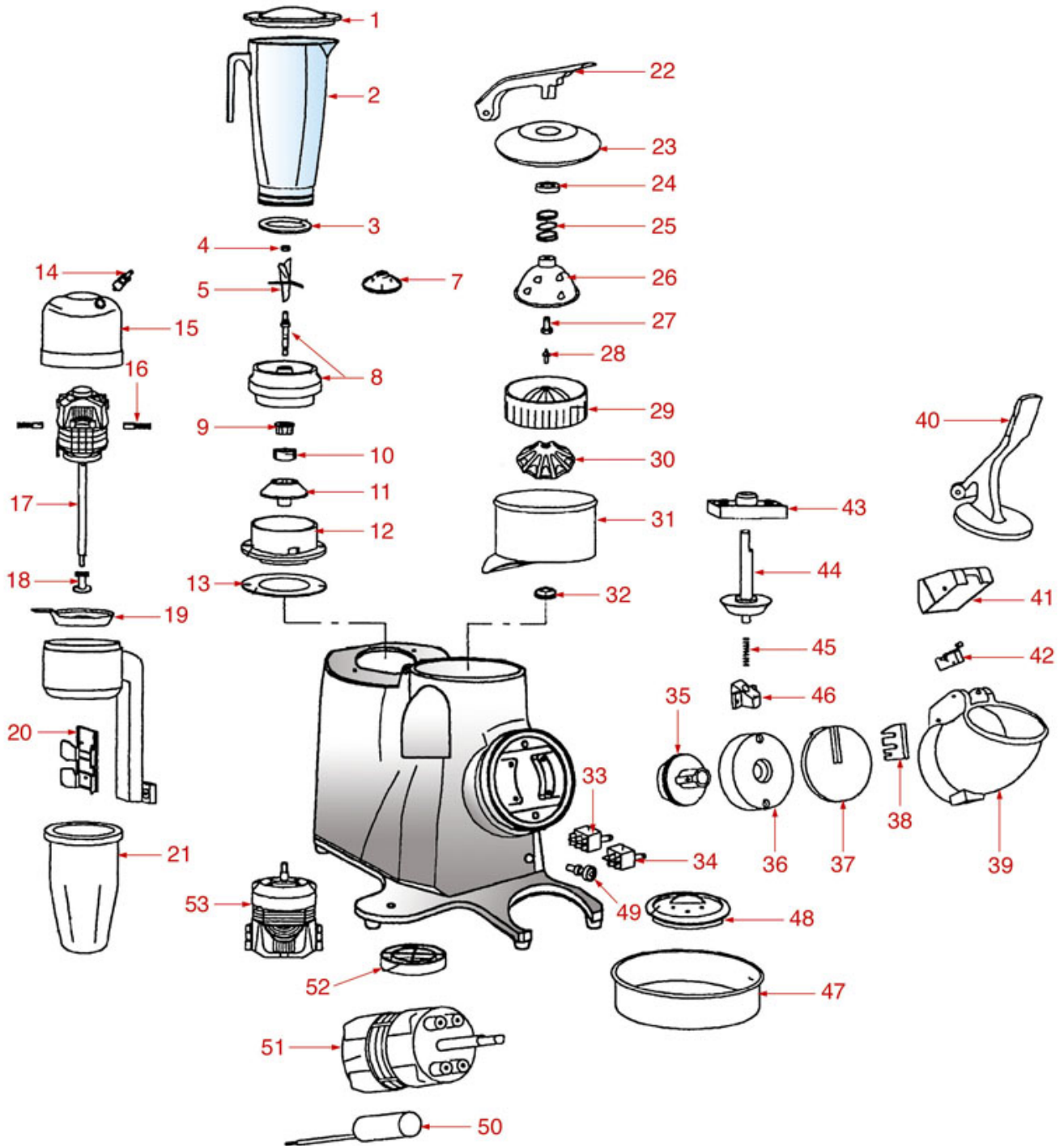
Suitable universal spare parts may not be included





MULTIPLE GROUP GR2014-2015-2025-2037

GR2014 - GR2015 - GR2025 - GR2037





VEMA



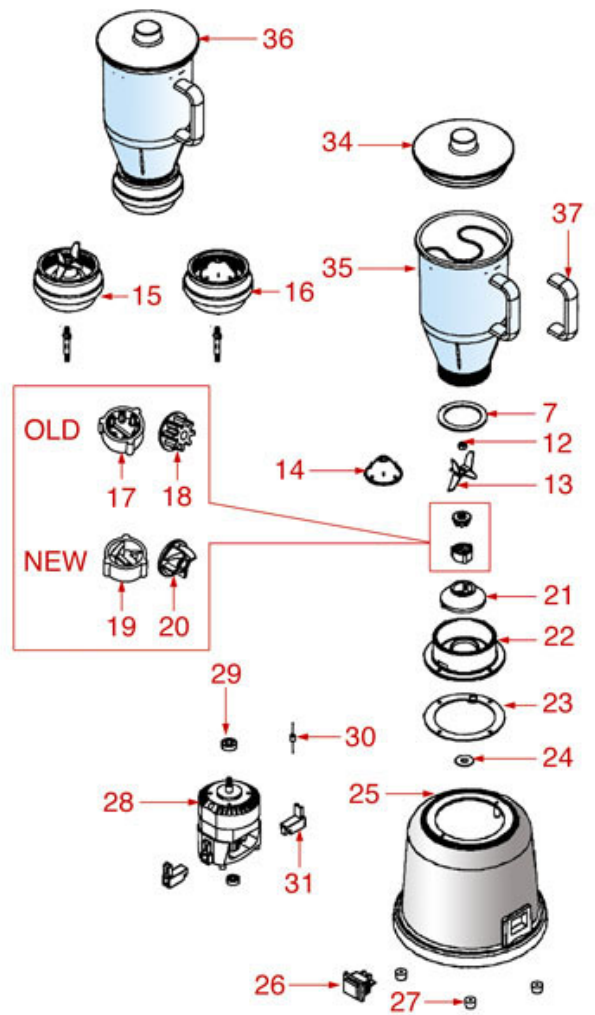
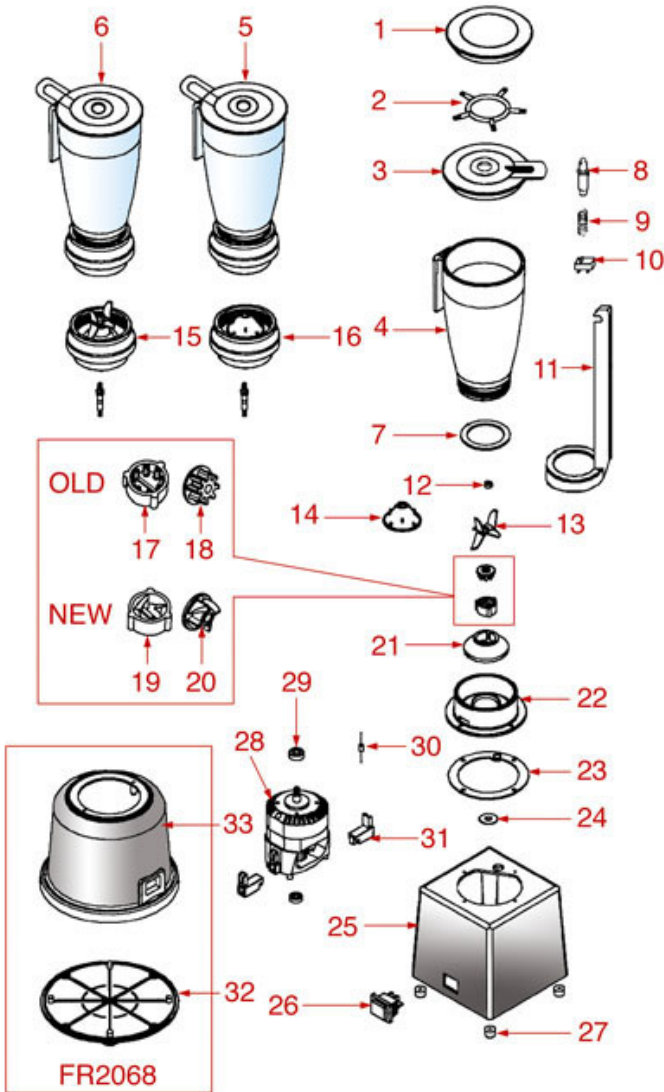
Position	LF code no.	Description
1	1381006	OLD MODEL JUG LID
2	1080006	PLASTIC JUG NEW TYPE 1.2 L
2	1080007	PLASTIC JUG NEW TYPE 1.2 L
2	1235634	PLASTIC JUG 1.2 L
3	1186488	JUG GASKET \varnothing 72x55x3 mm
4	1528030	ST.STEEL HEXAGONAL NUT M6 UNI 5588
5	1718001	THREE PIECES KNIFE SET
7	1381007	MIXER CONE
8	1080008	COMPLETE NEW JUG HOLDER WITH BLADES
8	1080009	COMPLETE NEW JUG HOLDER WITH CONE
9	1212002	NEW MODEL MALE GEAR 4 TEETH
9	1235006	MALE GEAR 8 TEETH OLD TYPE
10	1212003	FEMALE GEAR COUPLING 4 TEETH
10	1235005	GEAR COUPLING FEMALE 8 TEETH
11	1381008	CONVEYOR COUPLING
13	1186489	ANTIVIBRATION GASKET
18	1381009	COMPLETE AGITATOR BUTTERFLY
26	1381010	STAINLESS STEEL BELL
29	1381170	COMPLETE CONE
30	1381011	STAINLESS STEEL CONE HOLDER
32	1186493	SEALING RING
33	1319150	2 SPEEDS LEVER SWITCH 250V
33	1319157	ON-OFF-ON STABLE SELECTOR SWITCH
34	3319016	RED BIPOLAR SWITCH 16A 250V
35	1381012	COMPLETE CLUTCH
42	1240008	MICROSWITCH 3A 250V
44	1381013	CLUTCH AXIS
49	1221007	RED PILOT LIGHT 230V
50	3068016	CAPACITOR μ F 10 450V 50/60Hz



BLENDER FR2002-2003-2004-2019-2068

FR2002 - FR2003 - FR2004 - FR2019 - FR2068

FR2055





VEMA

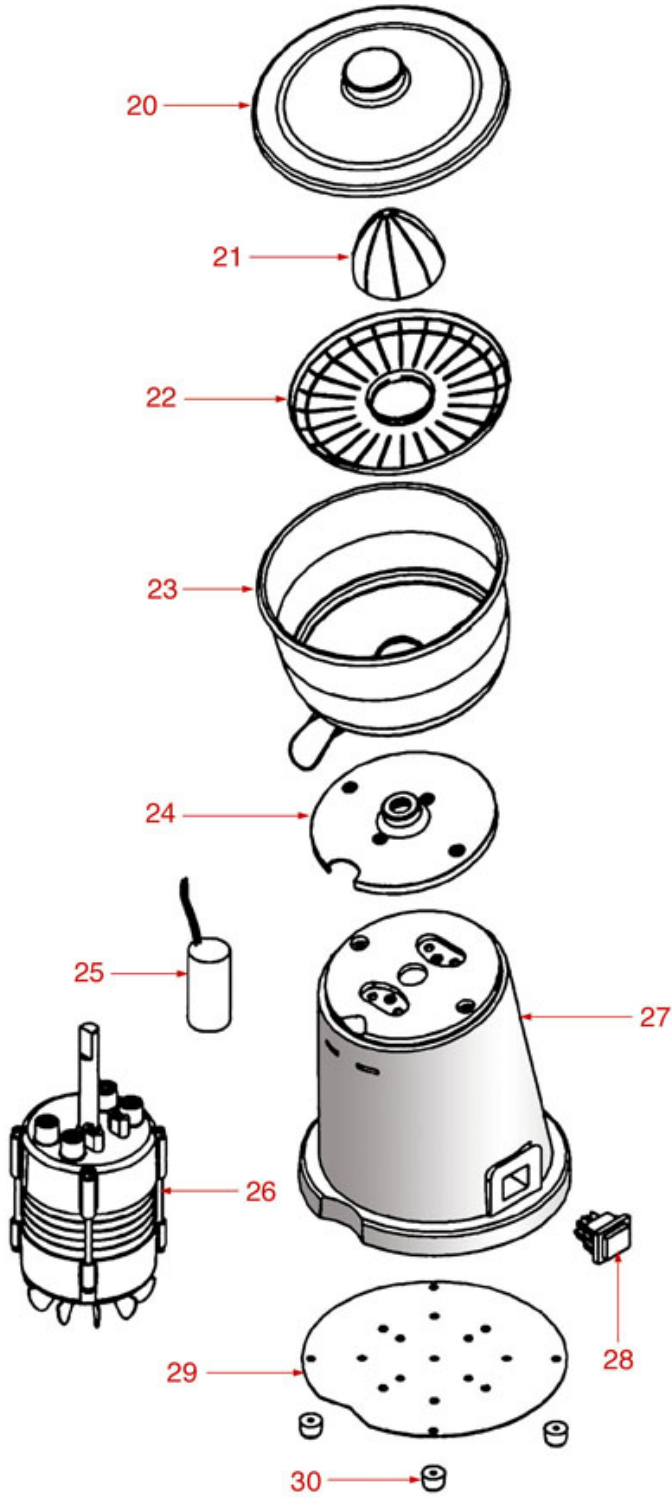


Position	LF code no.	Description
1	1381006	OLD MODEL JUG LID
3	1381005	NEW MODEL LID
4	1235634	PLASTIC JUG 1.2 L
5	1080007	PLASTIC JUG NEW TYPE 1.2 L
6	1080006	PLASTIC JUG NEW TYPE 1.2 L
7	1186488	JUG GASKET \varnothing 72x55x3 mm
9	1250057	MICROSWITCH CONTROL \varnothing 7x28 mm SPRING
10	1240009	MICROSWITCH 5A 250V
12	1528030	ST.STEEL HEXAGONAL NUT M6 UNI 5588
13	1718001	THREE PIECES KNIFE SET
14	1381007	MIXER CONE
15	1080008	COMPLETE NEW JUG HOLDER WITH BLADES
16	1080009	COMPLETE NEW JUG HOLDER WITH CONE
17	1235005	GEAR COUPLING FEMALE 8 TEETH
18	1235006	MALE GEAR 8 TEETH OLD TYPE
19	1212003	FEMALE GEAR COUPLING 4 TEETH
20	1212002	NEW MODEL MALE GEAR 4 TEETH
21	1381008	CONVEYOR COUPLING
23	1186489	ANTIVIBRATION GASKET
24	1186490	SEALING RING
26	1319157	ON-OFF-ON STABLE SELECTOR SWITCH

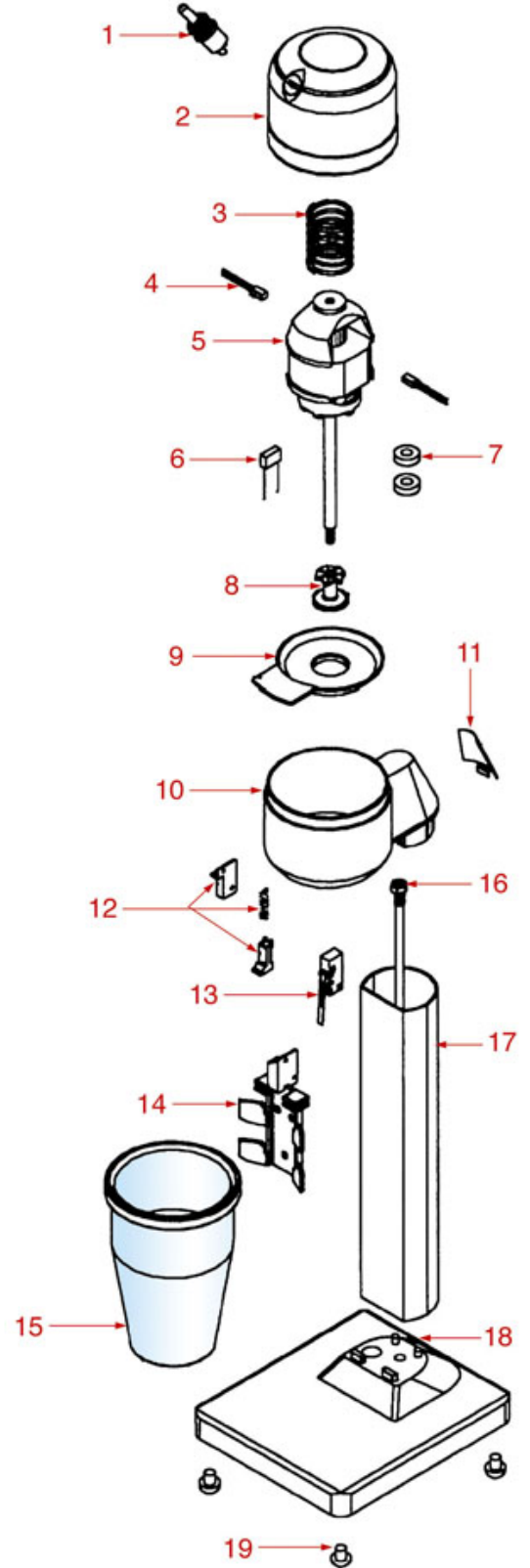


BLENDER FL2005-2006-2008-CITRUS SQUEEZER

SP2062



FL2005 - FL2006 - FL2008





VEMA

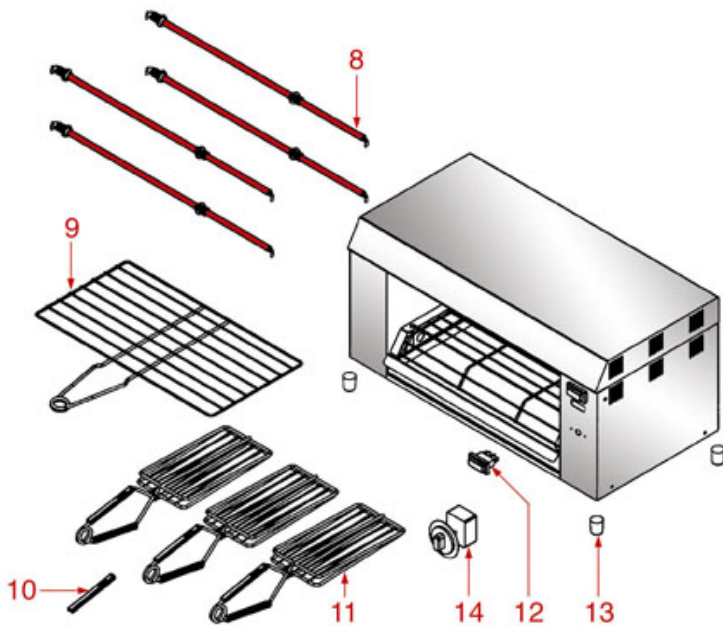


Position	LF code no.	Description
7	1063001	BLENDER BEARINGS WATERTIGHT
8	1381009	COMPLETE AGITATOR BUTTERFLY
12	1381002	JUG BLOCKING SLIDEWAY WITH SPRING
13	1240010	MICROSWITCH 16A 250V
14	1381001	JUG HOLDER 4 HOLES WITH HEAD
14	1381021	JUG HOLDER 3 HOLES WITH HEAD
15	1235641	PLASTIC JUG
21	1381003	TRANSPARENT CONE
21	1381004	TRANSPARENT CONE
25	3068010	CAPACITOR μ F 6.3 450V 50/60Hz
28	3319016	RED BIPOLAR SWITCH 16A 250V

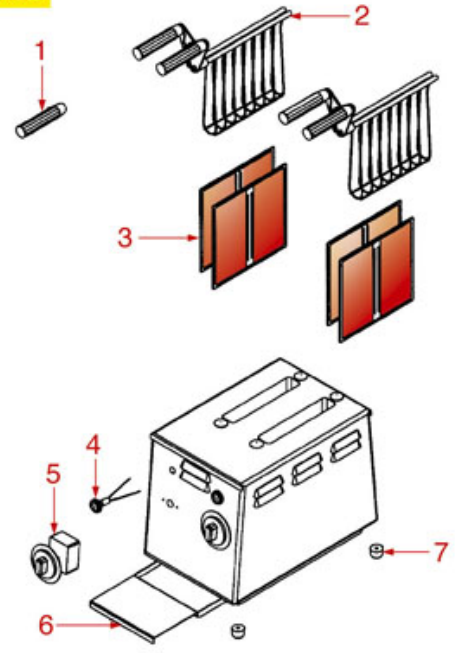


TOASTER-SMALL OVEN-SINGLE PLATE

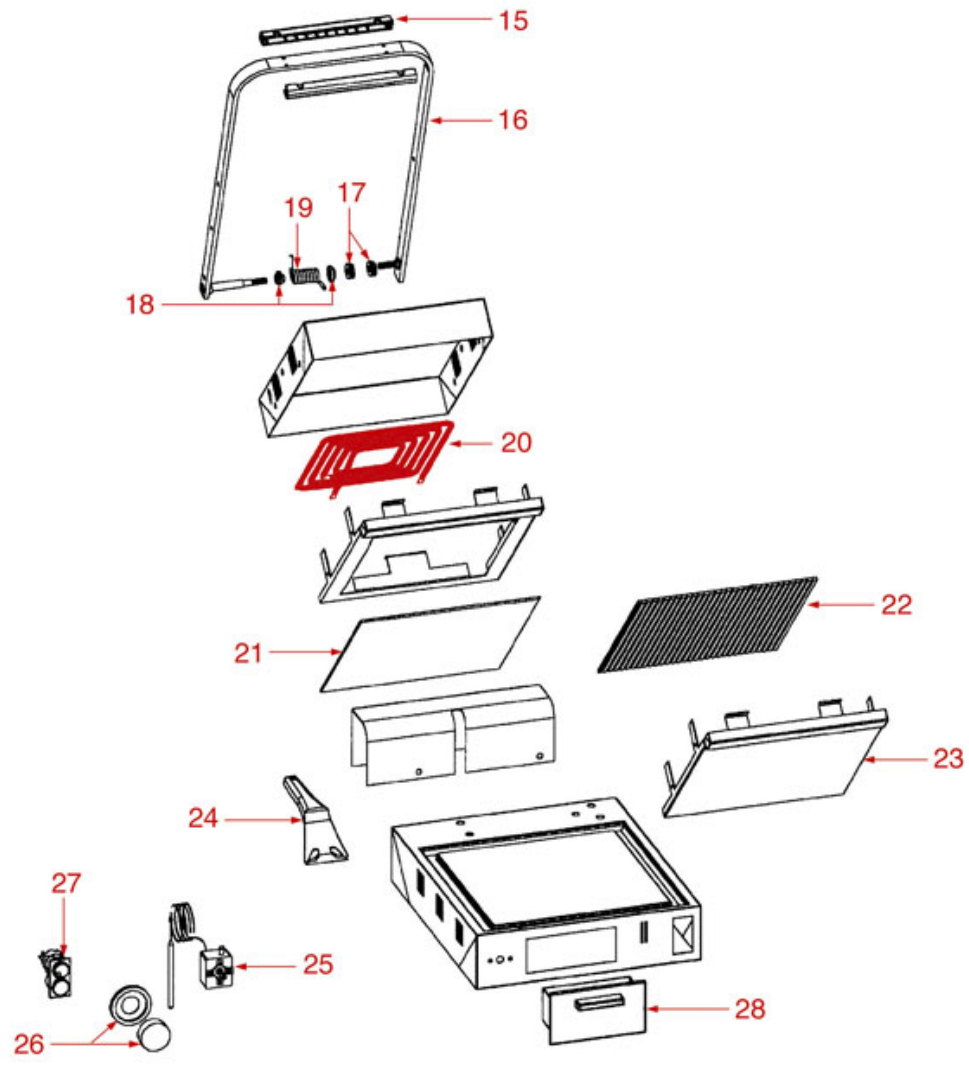
FO2069



TP2059



PV2063





VEMA



Position	LF code no.	Description
2	3317050	TOAST CAGE
3	3355822	HEATING ELEMENT 550W 230V RIGHT-HAND
3	3355823	HEATING ELEMENT 550W 230V LEFT-HAND
5	9721006	TIMER 5 MINUTES KIT
8	3355346	HEATING ELEMENT 570W 115V
11	3317051	GRILL PLIER
12	3319139	RED THREE-POLE SWITCH 16A 250V
14	3446138	TIMER 15 MINUTES M2
19	3250012	SPRING \varnothing 19x42 mm
25	3444007	THERMOSTAT TR2 0-300°C
26	3444008	BLACK KNOB \varnothing 41 mm 0-90°C



Suitable for:

VEMA



Suitable for:

Bearings

1063001 BLENDER BEARINGS WATERTIGHT



VEMA XRFL20

Capacitors

3068016 CAPACITOR μ F 10 450V 50/60Hz
operating temperature $-25+85^{\circ}\text{C}$
in compliance with EEC 93/68 and 92/31 regulations



VEMA XRGR11

3068010 CAPACITOR μ F 6.3 450V 50/60Hz
operating temperature $-25+85^{\circ}\text{C}$
in compliance with EEC 93/68 and EEC 92/31 regulat



VEMA XRSP58

Clutches

1381013 CLUTCH AXIS



VEMA XRGR3

1381012 COMPLETE CLUTCH



VEMA XRGR4

Cones for citrus squeezers

1381170 COMPLETE CONE



VEMA XRSP21

VEMA XRSP47

1381007 MIXER CONE



VEMA XRFR14

1381010 STAINLESS STEEL BELL



VEMA XRSP1

1381011 STAINLESS STEEL CONE HOLDER



VEMA XRSP5

Suitable for:

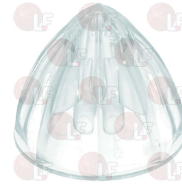
1381003 TRANSPARENT CONE
for Juice extractor (VEMA) SP2072



VEMA XRSP57

Suitable for:

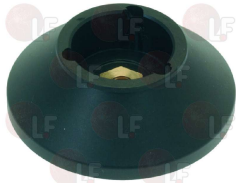
1381004 TRANSPARENT CONE
for Juice extractor (VEMA) SP2024 - SP2062
SP2067 - SP2078



VEMA XRSP11

Couplings

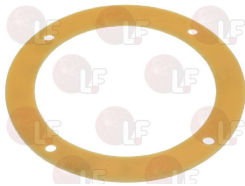
1381008 CONVEYOR COUPLING



VEMA XRFR18

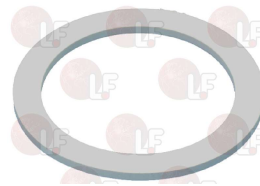
Gaskets and seals

1186489 ANTIVIBRATION GASKET



VEMA XRFR21

1186488 JUG GASKET \varnothing 72x55x3 mm
for Blender (SAMMIC) TB-1000



VEMA XRFR20

1186490 SEALING RING



VEMA XRFR44

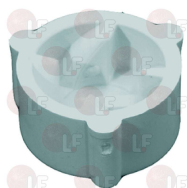
1186493 SEALING RING



VEMA XRSP39

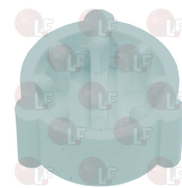
Gears

1212003 FEMALE GEAR COUPLING 4 TEETH



VEMA XRFR24

1235005 GEAR COUPLING FEMALE 8 TEETH
OLD TYPE
for Blender (SAMMIC) TB-1000
for Blender (VEMA) - Series FR



VEMA XRFR17



Suitable for:

VEMA

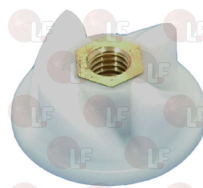


1235006 MALE GEAR 8 TEETH OLD TYPE
for Blender (SAMMIC) TB-1000
for Blender (VEMA) - Series FR



VEMA XRFR16

Suitable for:
1212002 NEW MODEL MALE GEAR 4 TEETH
for Blender (SAMMIC) TB-1000



VEMA XRFR9

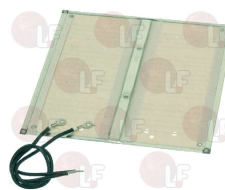
Heating elements

3355823 HEATING ELEMENT 550W 230V LEFT-HAND
length 150 mm - width 145 mm
complete with cables
for a correct service we recommend
to replace the right one 3355822 too
for Bread toaster electric (VEMA) TP2059



VEMA XRTP2

3355822 HEATING ELEMENT 550W 230V RIGHT-HAND
length 150 mm - width 145 mm
complete with cables
for a correct service we recommend
to replace the right one 3355823 too
for Bread toaster electric (VEMA) TP2059



VEMA XRTP2

3355346 HEATING ELEMENT 570W 115V
length 440 mm - connection \varnothing 12 mm
for Toaster electric (VEMA) F02069



VEMA XRF04

Ironmongery (screws,nuts,washers)

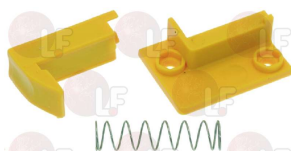
1528030 ST.STEEL HEXAGONAL NUT M6 UNI 5588



VEMA XRFR42

Jugs for blenders

1381002 JUG BLOCKING SLIDWAY WITH SPRING



VEMA XRFL22

1381021 JUG HOLDER 3 HOLES WITH HEAD



VEMA XRFL12



Suitable for:

Suitable for:

1381001 JUG HOLDER 4 HOLES WITH HEAD

1381005 NEW MODEL LID



VEMA XRFL12

VEMA XRFL8

VEMA XRFR19

1381006 OLD MODEL JUG LID

1235641 PLASTIC JUG
height 170 mm
max external \varnothing 115 mm
indexed



VEMA XRFR3

VEMA XRFL1

1080006 PLASTIC JUG NEW TYPE 1.2 L
with blades - 4-teeth gear

1080007 PLASTIC JUG NEW TYPE 1.2 L
with cone - 4-teeth gear



VEMA XRFR4

VEMA XRFR27

1235634 PLASTIC JUG 1.2 L



VEMA XRFR1

Knives

1080008 COMPLETE NEW JUG HOLDER WITH BLADES
4 teeth gear

1080009 COMPLETE NEW JUG HOLDER WITH CONE
4 teeth gear



VEMA XRFR2

VEMA XRFR26



Suitable for:

VEMA



Suitable for:

1718001 THREE PIECES KNIFE SET
for Blender (SAMMIC) TB-1000



VEMA XRFR15

Lamps

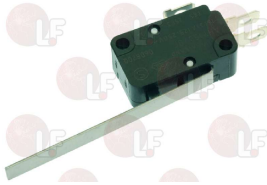
1221007 RED PILOT LIGHT 230V
ø head 20 mm - ø hole 10 mm



VEMA XRTR11

Microswitches

1240010 MICROSWITCH 16A 250V



VEMA XRFL6

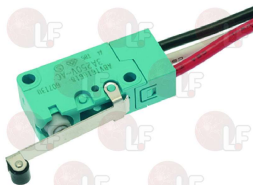
3240123 MICROSWITCH 16A 250V

for Granita machine (UGOLINI) GIANTGL - MTGL
MTMINI
for Ice crusher (SANTOS) 9
for Mixer (ROBOT COUPE) MP350 - MP450 - MP550
MP550A - MP600 - MP600A



VEMA XRSP70

1240008 MICROSWITCH 3A 250V



VEMA XRTR5

1240009 MICROSWITCH 5A 250V



VEMA XRFR60

Paddles

1381009 COMPLETE AGITATOR BUTTERFLY

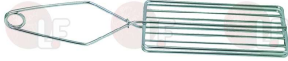


VEMA XRFL5



Pliers for sandwiches

3317051 GRILL PLIER
length 100 mm
height 180 mm
for Toaster



VEMA XRFO3

3317050 TOAST CAGE
length 195 mm
height 130 mm.
for Bread toaster electric (VEMA) TP2059



VEMA XRTP1

Springs

1250057 MICROSWITCH CONTROL \varnothing 7x28 mm SPRING



VEMA XRFR59

3250012 SPRING \varnothing 19x42 mm
for ELECTRIC GRIDDLE PV



VEMA XRPV13

Switches

1319157 ON-OFF-ON STABLE SELECTOR SWITCH
16A 250V - with cap
max.temperature 120°C
mounting hole 22x30 mm
for Blender (SAMMIC) TB-1000



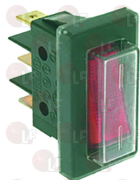
VEMA XRFR22

3319016 RED BIPOLAR SWITCH 16A 250V
with indicator lamp
silk-screen print 0 - I
max temperature 120°C
mounting hole 22x30 mm



VEMA XRSP15

3319139 RED THREE-POLE SWITCH 16A 250V
with indicator lamp and button protection cap
max temperature 120°C
mounting hole 11x30 mm
for Toaster electric (VEMA) FO2069



VEMA XRFO1

1319150 2 SPEEDS LEVER SWITCH 250V
old model



VEMA XRGR17



Suitable for:

VEMA



Suitable for:

Thermostats

3444008 BLACK KNOB \varnothing 41 mm 0-90°C
D-shaped pin \varnothing 6x4.6 mm
for thermostat TR/2



VEMA XRPV16

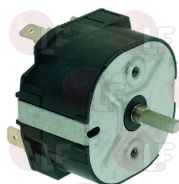
3444007 THERMOSTAT TR2 0-300°C
D-shaped pin \varnothing 6x4.6 mm
capillary length 1500 mm - 15A 250V
bulb \varnothing 3.5x190 mm



VEMA XRPV3

Timers

3446138 TIMER 15 MINUTES M2
mechanical movement with balance wheel
manually set mechanical timer
manually set cycle 15 minutes
2 poles with contact capacity 16(4)A 250V
max temperature 125°C
square pin 3x3 mm



VEMA XRF05

9721006 TIMER 5 MINUTES KIT
complete with knob
mechanical movement with balance wheel
manually set mechanical timer
5 minutes manually set cycle
contact capacity 16(3)A 250V
max temperature 125°C
squared pin 3x3 mm
f/POTATO PEELER
PVM6-PVM10-PVM15-PVM23-PVM32-PLP6-
PLP10-PLP15-PLP23-PLP32



VEMA XRTP3

The data herewith contained may change without notice and LF SpA cannot be held responsible for possible errors stated or resulting by the use of this document. All rights reserved. No part of this publication may be reproduced without written permission by LF SpA.



LF SpA
via Voltri, 80 - 47522 Cesena (FC) ITALIA
Tel. +39 0547 34 11 11 - Fax +39 0547 34 11 10
www.lfricambi724.it - www.lfricambi724.mobi
info@lfricambi.it
Export Dept.: Tel. +39 0547 34 11 50 - Fax: +39 0547 34 11 55
www.lfspareparts724.com - www.lfspareparts724.mobi
export@lfspaceparts.com

FRANCE



EPGC Sas
13, Rue des Forts - 59960 Neuville en Ferrain
Tél. +33 (0)3 20 25 06 21
Fax +33 (0)3 20 25 34 12
www.epgc.com
www.epgc724.mobi
epgc@epgc.com

DEUTSCHLAND



LF GmbH
Junkersstrasse, 1 - D-82178 Puchheim - München
Tel. +49 89 89 45 78 66
Fax +49 89 89 45 78 88
www.lfersatzteile724.de
www.lfersatzteile724.mobi
info@lfersatzteile.de

SCHWEIZ



LF GmbH Verkaufsbüro
Sennweidstrasse, 45 - CH-6312 Steinhausen
Tel. +41 (0)41 760 15 80-1
Fax +41 (0)41 760 15 85
www.lfersatzteile724.ch
www.lfersatzteile724.mobi
info@lfersatzteile.ch

ESPAÑA



LF Repuestos Horeca S.L.U.
Calle Ciudad Real, 10 - 45517 Escalonilla - Toledo
Tif. +34 91 477 91 00
Fax +34 91 477 90 81
www.lfrepuestos724.es
www.lfrepuestos724.mobi
info@lfrepuestos.es

UNITED KINGDOM



LF Spare Parts Ltd.
A10a Lakeside Business Park, Broadway Lane
South Cerney, Gloucestershire GL7 5XL
Tel. +44 (0)1285 86 16 25
Fax +44 (0)1285 86 39 49
www.lfspareparts724.co.uk
www.lfspareparts724.mobi
info@lfspaceparts.co.uk

RUSSIA



OOO LF
ul, Anatoliya Zhivova, 8 - office 1 - 123100 Moscow
Tel. +7 499 259 85 75
Fax +7 495 725 26 53
www.lfspareparts724.ru
www.lfspareparts724.mobi
info@lfspaceparts.ru

CHINA



LF China
Room 102, House 8, Lane 725, Mao Tai Rd.
Changning Dist. - 200336 Shanghai
Tel. +86 (0)21 33 53 66 31
Fax +86 (0)21 33 53 66 32
www.lfspareparts724.com
www.lfspareparts724.mobi
china@lfspaceparts.com