



Spare parts for:

## Commercial refrigeration



Suitable for:

# FRIGINOX



This catalogue is automatically generated.  
Therefore, the sequence of the items might  
not be always shown at best.

Updates will be issued in case of additions  
and/or amendments.

*Suitable universal spare parts may not be included*





Suitable for:

# FRIGINOX



Suitable for:

## Compressors and spares

**3070184 COMPRESSOR EMBRACO NEK6210GK CSIR**  
220/240V 50Hz  
power 3/8 Hp, displacement 8.78 cc  
gas R404a/R507 HMBP  
ASPERA



FRIGINOX FX95055832

**3070250 COMPRESSOR TECUMSEH AE4440Z CSIR**  
220/240V 50Hz  
power 1/3 Hp, displacement 6.7 cc  
gas R404a/R507 HMBP  
for Refrigerated cupboard (FRIGINOX) G/GL2



FRIGINOX FX95055945

**3070097 COMPRESSOR TECUMSEH CAJ2446Z CSR**  
220/240V 50Hz  
Rotalock suction connection  
power 1.2 Hp, displacement 26.1 cc  
gas R404a/R507 LBP



FRIGINOX FX95025417

## Copper tubes for refrigeration

**3046018 CAPILLARY TUBE  $\phi$  1.24 mm INTERNAL**  
approx 3 kg bundle  
for Refrigerated cupboard (FRIGINOX) MINI ACH2



FRIGINOX FX95005278



## Electronic controllers

- 7107951 THERMOSTAT ELIWELL ID PLUS 961**  
 230V 50/60Hz  
 1 relay output 2 HP compressor  
 1 NTC probe included 1500 mm silicone  
 1 NTC probe included 1500 mm silicone  
 defrost stop  
 TTL input for Copy Card  
 Front dimensions 74x32 59mm depth  
 cutout 71x29 mm  
 for Refrigerated cupboard (FRIGINOX) G/GL1  
 G/GL1 star + positif cond air - PGE2 G1-BT  
 for Refrigerated table (FRIGINOX) TP/TPL4S  
 TPO/TPLO4S



FRIGINOX FX95040273

## Evaporators

- 7104274 EVAPORATOR 270x230x130 mm**  
 for Refrigerated cupboard (FRIGINOX) G/GL1300  
 MINI ACH1  
 for Refrigerated cupboard (FRIGINOX) FRISTYLE  
 G/GL1300 - MINI ACH1 - MINI ACH2 G/GL2000



FRIGINOX FX95025888

- 7102823 UNIT COOLER ECO LUVATA EVS 40**  
 fan 1x200 ø mm  
 blade pitch 3.5/7 mm - output DT1=10K 363W  
 dimensions 411x433x120 mm



FRIGINOX FX95028411

- 7102317 UNIT COOLER ECO LUVATA EVS 60**  
 fan 1x200 ø mm  
 blade pitch 3.5/7 mm - output DT1=10K 500W  
 dimensions 411x433x120 mm  
 for Refrigerated cupboard (FRIGINOX) ATLAS GN2 AT1  
 STAR PLUS



FRIGINOX FX95028403



Suitable for:

# FRIGINOX



Suitable for:

## Filters for refrigeration

**7100513 COPPER FILTER 10 g**  
2 ways - inlet 6.5 mm output 2.6 mm  
ø 16 mm - length 112 mm



FRIGINOX FX95035960

**5061764 COPPER FILTER 30 g**  
2 ways - inlet 6.5 mm outlet 3.2 mm  
ø 24 mm - length 140 mm  
for Refrigerated cupboard (FRIGINOX) G/GL1 - G/GL2  
MINI ACH2



FRIGINOX FX95040261

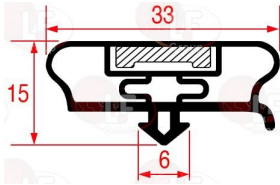
**3160378 DEHYDRATOR FILTER HERCULES**  
inlet 8 mm outlet 3.30 mm  
length 270 mm



FRIGINOX FX95040719

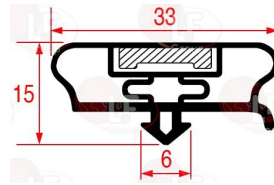
## Gaskets for refrigerators

**5043774 SNAP-IN GASKET 1538x670 mm**  
magnetic - gray colour  
for Refrigerated cupboard (FRIGINOX) FRISTAR G1  
G/GL1 - SR50 GN/GLN2



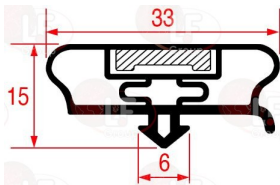
FRIGINOX FX95021747

**3286071 SNAP-IN GASKET 390x225 mm**  
magnetic - grey colour



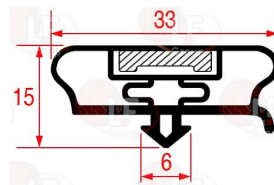
FRIGINOX FX95030516

**3286072 SNAP-IN GASKET 660x385 mm**  
magnetic - grey colour  
for Refrigerated cupboard (FRIGINOX) TGE3



FRIGINOX FX95030151

**3286073 SNAP-IN GASKET 660x455 mm**  
magnetic - grey colour  
for Refrigerated cupboard (FRIGINOX) TPR3  
for Refrigerated cupboard (FRIGINOX) DB2 - TPR3



FRIGINOX FX95030136



## Handles

**3242572 CATCH WITHOUT STRIKE 521 HP**  
with lock  
238x136,5 mm



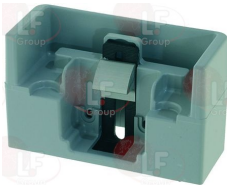
FRIGINOX FX95040688

**7105217 CLOSING 4181 WITH LOCK**  
with internal safety handle  
for Refrigerated cupboard (FRIGINOX)  
ATLAS-2004 GN1-1 AT1



FRIGINOX FX95040272

**3242359 DOOR SHIM FITTING 52/72 mm**  
for lock 920/921



FRIGINOX FX95040010

**7102592 HANDLE SNAP-IN PLASTIC GRAY**  
dimensions 250x90 mm  
for Refrigerated cupboard (FRIGINOX) DB3  
for Refrigerated cupboard electric (FRIGINOX)  
G/GL1 STAR



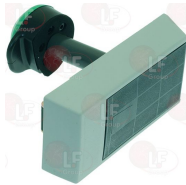
FRIGINOX FX95052742

**3242945 LH-RH CATCH WITH LOCK 571 CR**  
straight handgrip  
base length 150x23x30h mm  
mounting distance 110 mm



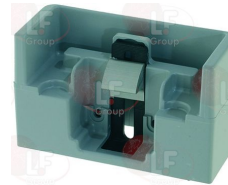
FRIGINOX FX95040124

**3242357 LOCKING HANDLE WITHOUT CLAMP 920**  
without key lock  
245x108xh52 mm



FRIGINOX FX95039996

**3242359 DOOR SHIM FITTING 52/72 mm**  
for lock 920/921



FRIGINOX FX95040010



Suitable for:

# FRIGINOX



**3242957 RH/LH LOCKING HANDLE W/OUT KEYLOCK 790CR**  
 straight handle  
 length 254x30 mm - mounting distance 133 mm  
 with adjustable strike from 9 to 22 mm  
 for high temperatures  
 for OVEN



FRIGINOX FX95014544

FRIGINOX FX95017950

Suitable for:

**3242947 RH/LH LOCKING HANDLE WITHOUT LOCK 791 CR**  
 curved handle  
 length 254x30 mm - mounting distance 133 mm  
 adjustable catch between 9 and 22 mm



FRIGINOX FX95014551

## Heating elements

**3455283 CARTRIDGE HEATING ELEMENT 50W 230V**  
 cartridge length 215 mm ø 10 mm  
 cable length 1500 mm  
 for TRAY  
 for Refrigerated cupboard (FRIGINOX)  
 for Refrigerated table (FRIGINOX)  
 for Refrigerated cupboard (FRIGINOX) MINI ACH1  
 ATLAS AT25GN2/1



FRIGINOX FX95011367

**3455282 CARTRIDGE HEATING ELEMENT 75W 230V**  
 cartridge length 205 mm ø 10 mm  
 cable length 3250 mm  
 for TRAY  
 for Refrigerated cupboard (FRIGINOX)  
 for Refrigerated table (FRIGINOX)  
 for Refrigerated cupboard (FRIGINOX) G/GL2 G/GL1



FRIGINOX FX95015798

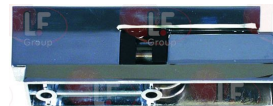
## Hinges, catches and accessories

**5049333 ANGLES PLASTIC KIT**  
 for Refrigerated cupboard (FRIGINOX)



FRIGINOX FX95263998

**3053389 CHROME PLATED HINGE 308**  
 length 120 mm - mounting distance 50 mm



FRIGINOX FX95014445

**3053942 DOOR UPPER BRACKET**



FRIGINOX

**7104100 HINGE**  
 dimensions 75x25 mm  
 for Refrigerated cupboard (FRIGINOX) FRISTAR+



FRIGINOX FX95296950

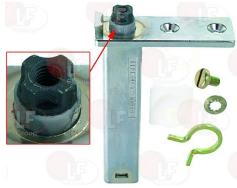




Suitable for:

Suitable for:

**3053941 HINGE FERMOD 175**  
with cross pin  
for Refrigerated cupboard (FRIGINOX) G/GL2 C/CL500



FRIGINOX FX95014601

FRIGINOX 95014601

**3053942 DOOR UPPER BRACKET**



FRIGINOX

**7101477 HINGE WITH PIN RH/LH**  
dimensions 150x45 mm  
for Refrigerated cupboard (FRIGINOX) C/CL500  
G/GL1 - G/GL2 - SR1 iC RC80-22 iC SR1P iC  
SR15A MINI ACH1  
for Refrigerated cupboard electric (FRIGINOX)



FRIGINOX FX95018875

**3053429 HINGE 471 HP WITH RAMP**  
mounting distance 30 mm



FRIGINOX FX95040690

**3053560 PAINTED HINGE 456 WITH RAMP**  
mounting distance 32-16 mm



FRIGINOX FX95022109

## Locks

**5045573 COMPLETE LOCK**  
for Refrigerated cupboard (FRIGINOX) FRISTAR/G



FRIGINOX FX95051645

## Microswitches

**5050688 MICROSWITCH ARCOLECTRIC HK3141**  
1-NC 1-NO 5A 250V  
white colour



FRIGINOX FX95033270



Suitable for:

# FRIGINOX



Suitable for:

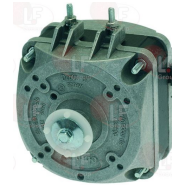
## Motors

**3340047 MOTOR COPREL AX010/5B-1RSX**  
 230V 50/60Hz 3.3W 2400rpm  
 shaft length 53 mm  
 interchangeable with ELCO CN3-20-0/205



FRIGINOX FX95036034

**3240580 MOTOR EBM M4Q045-CA03-75 PENTAVALENT**  
 230V 50/60Hz 10/36W 1300rpm  
 for Refrigerated cupboard (FRIGINOX) G/GL2  
 for Refrigerated cupboard (FRIGINOX) AT1 - G/GL1  
 G1-BT



FRIGINOX FX95040257

**3240211 MOTOR ELCO VN 10-20 PENTAVALENT**  
 230V 50/60Hz 10/38W 1300rpm



FRIGINOX FX95023693

**3805013 MOTOR FAN 18 W WITH RING**  
 230V 50Hz  
 suction fan ø 200 mm  
 R1825/005.200.025



FRIGINOX

**3805012 MOTOR FAN 7 W WITH RING**  
 230V 50Hz  
 suction fan ø 200 mm  
 VN7.20/651 A200.28  
 for Refrigerated cupboard (FRIGINOX) ACH2  
 for Refrigerated cupboard (FRIGINOX) G/GL2000



FRIGINOX FX95024089

## Probes

**3397164 SILICONE PTC PROBE 1500 mm**  
 2 wire probe temperature range -55+150°C  
 bulb ø 6x40 mm  
 for Refrigerated cupboard (FRIGINOX) ASP 651



FRIGINOX FX95036281





## Protection plates

- 7105266 PROFILE PLASTIC ADHESIVE**  
length 2000 mm  
for Refrigerated cupboard (FRIGINOX) ACP2-2 6/8  
for Refrigerated cupboard (FRIGINOX) ACP2-2 6/8



FRIGINOX FX95023560

## Thermostatic valves for refrigeration

- 3150049 DANFOSS ORIFICE 03**  
068-2006



FRIGINOX FX95008835

- 3150136 NOZZLE DANFOSS 01**  
068-2091  
only with welding valve



FRIGINOX FX95034070

- 3150044 THERMOSTATIC VALVE DANFOSS TES2**  
gas R404a/R507  
with external equalizer 1/4"sae  
inlet 3/8"sae  
outlet 1/2"sae  
operating range -40°/+10°C  
Danfoss 068Z3403




















FRIGINOX FX95025995

*The data herewith contained may change without notice and LF SpA cannot be held responsible for possible errors stated or resulting by the use of this document. All rights reserved. No part of this publication may be reproduced without written permission by LF SpA.*



## Distributing Components, Spare Parts & Accessories in original quality worldwide

- 
-  **LF SpA HEADQUARTERS**  
via Voltri, 80 - 47522 Cesena (FC) ITALY  
Tel. +39 0547 34 11 11 - Fax +39 0547 34 11 10  
[www.lfircambi724.it](http://www.lfircambi724.it) - [www.lfircambi724.mobi](http://www.lfircambi724.mobi)  
[info@lfircambi.it](mailto:info@lfircambi.it)  
Export Dept.: Tel. +39 0547 34 11 50 - Fax: +39 0547 34 11 55  
[www.lfspareparts724.com](http://www.lfspareparts724.com) - [www.lfspareparts724.mobi](http://www.lfspareparts724.mobi)  
[export@lfspareparts.com](mailto:export@lfspareparts.com)
-  **LF SpA HOUSEHOLD COMPONENTS DIVISION**  
Via Padriciano, 34149 Trieste - Italia - AREA Science Park  
Tel. +39 0547 34 12 42 - Fax +39 0547 34 12 48  
[www.lfspareparts724.com](http://www.lfspareparts724.com) - [www.lfspareparts724.mobi](http://www.lfspareparts724.mobi)  
[info@lfspareparts.com](mailto:info@lfspareparts.com)
-  **EPGC Sas FRANCE**  
13, Rue des Forts - 59960 Neuville en Ferrain  
Tel. +33 (0)3 20 25 06 21  
Fax +33 (0)3 20 25 34 12  
[www.epgc.com](http://www.epgc.com)  
[www.epgc724.mobi](http://www.epgc724.mobi)  
[epgc@epgc.com](mailto:epgc@epgc.com)
-  **LF GmbH GERMANY**  
Junkersstrasse, 3 - D-82178 Puchheim - München  
Tel. +49 89 89 45 78 66  
Fax +49 89 89 45 78 88  
[www.lfersatzteile724.de](http://www.lfersatzteile724.de)  
[www.lfersatzteile724.mobi](http://www.lfersatzteile724.mobi)  
[info@lfersatzteile.de](mailto:info@lfersatzteile.de)
-  **LF China REPUBLIC OF CHINA**  
Room 403, No.2, Huadu Mansion, Lane 422, Huanghua Rd.  
Minhang Dist. - 201103 Shanghai  
Tel. +86 (0)21 33 53 66 31  
Fax +86 (0)21 33 53 66 32  
[www.lfspareparts724.com](http://www.lfspareparts724.com)  
[www.lfspareparts724.mobi](http://www.lfspareparts724.mobi)  
[china@lfspareparts.com](mailto:china@lfspareparts.com)
-  **OOO LF RUSSIAN FEDERATION**  
Ul. Anatoliya Zhivova, 8 - office 1 - 123100 Moscow  
Tel./Fax +7 495 725 26 53  
[www.lfspareparts724.ru](http://www.lfspareparts724.ru)  
[www.lfspareparts724.mobi](http://www.lfspareparts724.mobi)  
[info@lfspareparts.ru](mailto:info@lfspareparts.ru)
-  **LF Repuestos Horeca S.L.U. SPAIN**  
Poligono Industrial Carpetania - C/Miguel Faraday, 8 - 28906 Getafe  
Tel. +34 91 477 91 00  
Fax +34 91 477 90 81  
[www.lfrepuestos-horeca724.es](http://www.lfrepuestos-horeca724.es)  
[www.lfrepuestos724.mobi](http://www.lfrepuestos724.mobi)  
[info@lfrepuestos.es](mailto:info@lfrepuestos.es)
-  **LF SpA Cesena (IT) Swiss Branch Steinhausen SWITZERLAND**  
Sennweidstrasse, 45 - CH-6312 Steinhausen  
Tel. +41 (0)41 760 15 80-1  
Fax +41 (0)41 760 15 85  
[www.lfersatzteile724.ch](http://www.lfersatzteile724.ch)  
[www.lfersatzteile724.mobi](http://www.lfersatzteile724.mobi)  
[info@lfersatzteile.ch](mailto:info@lfersatzteile.ch)
-  **LF Spare Parts Ltd. UNITED KINGDOM**  
A10a Lakeside Business Park, Broadway Lane  
South Cerney, Gloucestershire GL7 5XL  
Tel. +44 (0)1285 86 16 25  
Fax +44 (0)1285 86 39 49  
[www.lfspareparts724.co.uk](http://www.lfspareparts724.co.uk)  
[www.lfspareparts724.mobi](http://www.lfspareparts724.mobi)  
[info@lfspareparts.co.uk](mailto:info@lfspareparts.co.uk)
- 
-  **AUSTRALIA AND NEW ZEALAND**  
[www.lfspareparts724.com](http://www.lfspareparts724.com)  
[andrea.calvio@lfspareparts.com](mailto:andrea.calvio@lfspareparts.com)
-  **AUSTRIA**  
[www.lfersatzteile724.at](http://www.lfersatzteile724.at)  
[info@lfersatzteile.at](mailto:info@lfersatzteile.at)
-  **BALKAN COUNTRIES**  
[www.lfspareparts724.com](http://www.lfspareparts724.com)  
[matijaramov@lfspareparts.com](mailto:matijaramov@lfspareparts.com)
-  **BALTIC COUNTRIES**  
[www.lfspareparts724.com](http://www.lfspareparts724.com)  
[inara.silina@lfspareparts.com](mailto:inara.silina@lfspareparts.com)
-  **CENTRAL AND EASTERN EUROPE**  
[www.lfspareparts724.cz](http://www.lfspareparts724.cz)  
[jiri.kremla@lfspareparts.cz](mailto:jiri.kremla@lfspareparts.cz)
-  **DENMARK**  
[www.lfspareparts724.dk](http://www.lfspareparts724.dk)  
[michael.leth@lfspareparts.com](mailto:michael.leth@lfspareparts.com)
-  **JAPAN**  
[www.lfspareparts724.jp](http://www.lfspareparts724.jp)  
[hiroshi.ukai@lfspareparts.jp](mailto:hiroshi.ukai@lfspareparts.jp)
-  **SOUTH KOREA**  
[www.lfspareparts724.com](http://www.lfspareparts724.com)  
[fabio.doni@lfspareparts.com](mailto:fabio.doni@lfspareparts.com)
-  **TURKEY**  
[www.lfyedekparca724.com](http://www.lfyedekparca724.com)  
[basar.ergun@lfyedekparca.com](mailto:basar.ergun@lfyedekparca.com)
-  **USA AND CANADA**  
[www.lfspareparts724.us](http://www.lfspareparts724.us)  
[sauro.dallaglio@lfspareparts.us](mailto:sauro.dallaglio@lfspareparts.us)  
[howard.truitt@lfspareparts.us](mailto:howard.truitt@lfspareparts.us)