



Spare parts for:

Food processing equipment



Suitable for:

SIGMA



This catalogue is automatically generated.
Therefore, the sequence of the items might
not be always shown at best.

Updates will be issued in case of additions
and/or amendments.

*Suitable **universal spare parts** may not be included*





Suitable for:

SIGMA

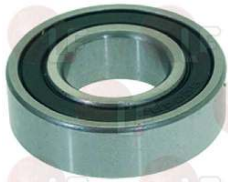


Suitable for:

Bearings

9063012 BEARING 6004 DDU

external \varnothing 42 mm -internal \varnothing 20 mm-thickness 12 mm
 for Bone bandsaw (SIRMAN) SO2400
 for Cutter (ROBOT COUPE) ECL52
 for Grater (FIMAR) GR8D
 for Kneader (FIMAR) IM12 - IM18
 for Kneader (SIGMA) TAURO22 - TAURO25 - TAURO30
 TAURO35 - TAURO40
 for Meat mincer (EVEREST) TC22P
 for Meat mincer (FIMAR) TR8D
 for Planetary machine (FIMAR) IP10 - IP20
 for Potato peeler (FAMA) FP-103
 for Potato peeler (PASQUINI) PSP700CE10KG
 PSP700CE15KG - PSP70010KG - PSP70015KG
 for Vegetables/mozzarella cutter (ROBOT COUPE)
 CL55D



SIGMA CUS60042RS

SIGMA 13000304

3063005 BEARING 6202 2RS NSK

external \varnothing 35 mm -internal \varnothing 15 mm-thickness 11 mm
 for Cutter (GAM) PRATIC3
 for Kneader (FAMA) KG5 - KG8
 for Meat mincer (FIMAR) TR8D
 for Pizza dough stretcher (FIMAR) FIP30 - FIP40
 FIP42 - FI30 - FI32 - FI40 - FI42 - FPP30
 FPP40 - FP30 - FP40
 for Pizza dough stretcher (IGF) B30 - B40 - L30
 L40
 for Potato peeler (DITO ELECTROLUX) T5S
 for Potato peeler (ZANUSSI) T5S
 for Slicer (BRAHER) USA250 - USA280 - USA300
 USA320
 for Slicer (FIMAR) HL250 - HL275 - HS250 - HS300
 H220 - H250 - H275 - H300 - V250



SIGMA 13000013

3063120 BEARING 6202 2RS SKF

\varnothing ext. 35 mm - \varnothing int. 15 mm - thickness 11 mm
 for Cutter (GAM) PRATIC3
 for Kneader (FAMA) KG5 - KG8
 for Meat mincer (FIMAR) TR8D
 for Pizza dough stretcher (FIMAR) FIP30 - FIP40
 FIP42 - FI30 - FI32 - FI40 - FI42 - FPP30
 FPP40 - FP30 - FP40
 for Pizza dough stretcher (IGF) B30 - B40 - L30
 L40
 for Potato peeler (DITO ELECTROLUX) T5S
 for Potato peeler (ZANUSSI) T5S
 for Slicer (BRAHER) USA250 - USA280 - USA300
 USA320
 for Slicer (FIMAR) HL250 - HL275 - HS250 - HS300
 H220 - H250 - H275 - H300 - V250



SIGMA 13000013

3063017 BEARING 6203 2RS NSK

external \varnothing 40 mm -internal \varnothing 17 mm-thickness 12 mm
 for Bone bandsaw (FIMAR) SE1550 - SE1830
 for Bone bandsaw (HUDSON) SEG.235
 for Bone bandsaw (SIRMAN)
 for Cutter (DITO ELECTROLUX) K35
 for Kneader (FIMAR) IM12 - IM18 - IM7
 for Meat mincer (FIMAR) 12 - 22
 for Pizza dough stretcher (FIMAR) SI320 - SI420
 SI520
 for Planetary machine (DITO ELECTROLUX) XBE10
 XBM10
 for Potato peeler (DITO ELECTROLUX) CD4 - CD8
 PL4 - PL8 - T10S - T15S
 for Potato peeler (DUPLEX-AGUSTONI) EXPORT15
 EXPORT4 - EXPORT6 - EXPORT8



SIGMA 13000014

SIGMA 13000314



Suitable for:

SIGMA



Suitable for:

3063121 BEARING 6203 2RS SKF

ø ext. 40 mm - ø int. 17 mm - thickness 12 mm
 for Bone bandsaw (FIMAR) SE1550 - SE1830
 for Bone bandsaw (HUDSON) SEG.235
 for Bone bandsaw (SIRMAN) PL4
 for Cutter (DITO ELECTROLUX) K35
 for Kneader (FIMAR) IM12 - IM18 - IM7
 for Meat mincer (FIMAR) 12 - 22
 for Pizza dough stretcher (FIMAR) SI320 - SI420
 SI520
 for Planetary machine (DITO ELECTROLUX) XBE10
 XBM10
 for Potato peeler (DITO ELECTROLUX) CD4 - CD8
 PL4 - PL8 - T10S - T15S
 for Potato peeler (DUPLEX-AGUSTONI) EXPORT15
 EXPORT4 - EXPORT6 - EXPORT8



SIGMA 13000014

SIGMA 13000314

1063901 BEARING 6204 2RS NSK

external ø 47 mm -internal ø 20 mm-thickness 14 mm
 for Kneader (GAM) A30
 for Kneader (IGF) 2200/S25 - 2200/S38
 for Kneader (SIGMA) TAURO22 - TAURO25 - TAURO30
 for Meat mincer (FIMAR) 12C - 12TS - 22C - 22TE
 for Mussel cleaner (LA MINERVA) C/E560C - C/E565C
 for Planetary machine (SIGMA) BM10 - BM20 - BM30
 for Potato peeler (ANGELO PO) MPK10 - MPK20 - MPK5
 for Potato peeler (LA MINERVA) C/560 - C/565
 C/570 - C/71
 for Slicer (BRAHER) MAT292 - MAT320 - MAT350
 for Vegetables/mozzarella cutter (DITO ELECTROLUX)
 TRS



SIGMA CUS62042RS

SIGMA 13000015

SIGMA 13000315

3063122 BEARING 6204 2RS SKF

ø ext. 47 mm - ø int. 20 mm - thickness 14 mm
 for Kneader (GAM) A30
 for Kneader (IGF) 2200/S25 - 2200/S38
 for Kneader (SIGMA) TAURO22 - TAURO25 - TAURO30
 for Meat mincer (FIMAR) 12C - 12TS - 22C - 22TE
 for Mussel cleaner (LA MINERVA) C/E560C - C/E565C
 for Planetary machine (SIGMA) BM10 - BM20 - BM30
 for Potato peeler (ANGELO PO) MPK10 - MPK20 - MPK5
 for Potato peeler (LA MINERVA) C/560 - C/565
 C/570 - C/71
 for Slicer (BRAHER) MAT292 - MAT320 - MAT350
 for Vegetables/mozzarella cutter (DITO ELECTROLUX)
 TRS



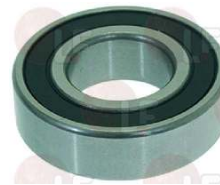
SIGMA CUS62042RS

SIGMA 13000015

SIGMA 13000315

9063005 BEARING 6205 2RS

external ø 52 mm -internal ø 25 mm-thickness 15 mm
 for Grater (SIRMAN)
 since 1/01/03
 GF
 for Kneader (OEM) FX/RVE - F301/2
 for Kneader (PIZZA GROUP) - Series TF - Series TR
 TRM22
 for Kneader (SIGMA) TAURO22 - TAURO25 - TAURO30
 for Meat mincer (FAMA) - Series 12CE
 for Planetary machine (DITO ELECTROLUX) BE20
 BM20 - XBM40
 for Planetary machine (SIGMA) BM10 - BM20 - BM30
 for Planetary machine (ZANUSSI) BE20 - BM20
 XBM40
 for Potato peeler (DITO ELECTROLUX) T10S - T15S



SIGMA 13000016

SIGMA 13000316



Suitable for:

SIGMA



Suitable for:

9063001 BEARING 6206 2RS
 external \varnothing 62 mm -internal \varnothing 30 mm-thickness 16 mm
 for Kneader (FIMAR) IM50S
 for Kneader (GAM) S16 - S20 - S30 - S40
 for Meat mincer (FIMAR) 32RS
 for Planetary machine (DITO ELECTROLUX) BE20
 BMX60 - BMX80 - BM20 - BM30 - MBE40 - MB40
 for Planetary machine (SIGMA) BM10 - BM20 - BM30
 BM40 - BM60 - BM80
 for Planetary machine (ZANUSSI) BE20 - BMX60
 BMX80 - BM20 - BM30 - MBE40 - MB40
 for Vegetables/mozzarella cutter (DITO ELECTROLUX)
 TR260
 for Vegetables/mozzarella cutter (ZANUSSI) TR260



SIGMA 1300017

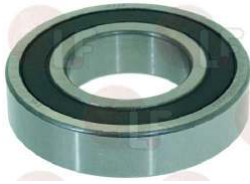
SIGMA 13000317

9063015 BEARING 6207 2RS
 external \varnothing 72 mm -internal \varnothing 35 mm-thickness 17 mm
 for Planetary machine (DITO ELECTROLUX) BMX60
 BMX80
 for Planetary machine (SIGMA) BM40
 for Planetary machine (ZANUSSI) BMX60 - BMX80



SIGMA 1300018

9063014 BEARING 6208 2RS
 external \varnothing 80 mm -internal \varnothing 40 mm-thickness 18 mm
 for Planetary machine (SIGMA) BM40 - BM60 - BM80



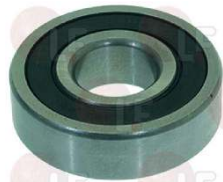
SIGMA 13000319

1063200 BEARING 6300 2RS
 external \varnothing 35 mm -internal \varnothing 10 mm-thickness 11 mm
 for Kneader (SIGMA) TAURO22 - TAURO25 - TAURO30
 TAURO35 - TAURO40



SIGMA 13000323

9063004 BEARING 6304 2RS
 \varnothing ext. 52 mm - \varnothing int. 21 mm - h 15 mm
 for Kneader (DITO ELECTROLUX) PSR100
 for Kneader (GAM) L16 - L20 - L30 - L40 - S30
 S40
 for Kneader (SIGMA) TAURO22 - TAURO25 - TAURO30
 TAURO35 - TAURO40
 for Kneader (ZANUSSI) PSR100
 for Planetary machine (DITO ELECTROLUX) BE20
 BM20 - BM30 - XBE20 - XBE30 - XBM30 - XBM40
 for Planetary machine (ZANUSSI) BE20 - BM20 - BM30
 XBE20 - XBE30 - XBM30 - XBM40
 for Potato peeler (DITO ELECTROLUX) T25E
 for Potato peeler (ZANUSSI) T25E



SIGMA 13000325

9063013 BEARING 6305 DDU
 external \varnothing 62 mm -internal \varnothing 25 mm-thickness 17 mm
 for Cutter (DITO ELECTROLUX) K120
 for Cutter (ZANUSSI) K120
 for Kneader (DITO ELECTROLUX) PSN - PSR
 for Planetary machine (DITO ELECTROLUX) BMX60
 MBE40 - MB40 - XBE60
 for Planetary machine (SIGMA) BM40 - BM60 - BM80
 for Planetary machine (ZANUSSI) BMX60
 for Potato peeler (ZANUSSI) T25



SIGMA CUS63052RS

SIGMA 13000326



Belts

5023129 CARPET 1400x420x1.5 mm
for Pizza dough stretcher (SIGMA) LM4.5



SIGMA 06001002

5034632 CARPET 2360x600x1.5 mm
for Pizza dough stretcher (SIGMA) SFG600TL
SFG600TM



SIGMA 06001009

5052984 MULTIGRIP BELT J 1092 H28 11 GROOVES
for Pizza dough stretcher (SIGMA) SFG500T



SIGMA 12003949

9062012 MULTIGRIP BELT J 660 H35 14 GROOVES
for Kneader (SIGMA) TAURO35 - TAURO40



SIGMA 12003943

9062008 MULTIGRIP BELT TB2 630 H20 9 GROOVES
for Kneader (SIGMA) TAURO22 - TAURO25 - TAURO30



SIGMA 12003952

9062004 TOOTHED BELT 22x8x800 mm Li
for Planetary machine (SIGMA) BM10



SIGMA 12003806

9062005 TOOTHED BELT 31x8x1000 mm Li
for Planetary machine (SIGMA) BM20 - BM30



SIGMA 01097080

9062006 TOOTHED BELT 33x10x1332 mm Li
for Planetary machine (SIGMA) BM40



SIGMA 01095080

9062007 TOOTHED BELT 41x13x1455 mm Li
for Planetary machine (SIGMA) BM60 - BM80



SIGMA 01101073

9062009 TOOTHED BELT 720 RPP8 807 H15
for Kneader (SIGMA) TAURO22 - TAURO25 - TAURO30



SIGMA 12003908



Suitable for:

9062010 TOOTHED BELT720 RPP8 807 H24
for Kneader (SIGMA) TAURO22 - TAURO25 - TAURO30



SIGMA 12003918

SIGMA



Suitable for:

9062011 TOOTHED BELT720 RPP8 807 H29
for Kneader (SIGMA) TAURO35 - TAURO40



SIGMA 12003909

Contactors

9454001 CONTACTOR SIEMENS 3TG1010-1AC2
coil 16A 24V 50/60Hz
3 normally open contacts
1 normally open auxiliary contact
for Planetary machine (SIGMA) BM10 - BM20 - BM30
BM40 - BM60 - BM80



SIGMA 25005108

Electronic printed-circuit boards

9390005 ELECTRON.CONTROL CIRCUIT BOARD 130x90 mm
for Kneader (SIGMA) TAURO22 - TAURO25 - TAURO30
TAURO35 - TAURO40



SIGMA 25001486

Gears

5025884 BOTTOM CONVEYOR COVER
external \varnothing 140 mm - square hole 34x34 mm
for Planetary machine (SIGMA) BM60



SIGMA 01101084

SIGMA 85101084-2

5029339 TOOTHED BOSS WITH BEARING HOUSING
flange 69x69 mm - external \varnothing 54 mm
internal \varnothing 25 mm - teeth number 22 mm
for Kneader (SIGMA) TAURO35 - TAURO40



SIGMA 01179014



SIGMA



Suitable for:

5035045 TOOTHED BOSS WITH BEARING HOUSING

flange 69x69 mm - internal \varnothing 45 mm
internal \varnothing 42 mm -total teeth 22 mm
for Kneader (SIGMA) BS30



SIGMA 01164011

Suitable for:

5025883 TOP CONVEYOR COVER

external \varnothing 140 mm - square hole 38x38 mm
for Planetary machine (SIGMA) BM60



SIGMA 85101083-2

5028298 TOP CONVEYOR COVER

external \varnothing 140 mm - square hole 38x38 mm
for Planetary machine (SIGMA) BM40



SIGMA 01095087

SIGMA 85095087-2

Microswitches

9240008 MICROSWITCH MV15 15A 250V

for Planetary machine (SIGMA) BM10 - BM20 - BM30
BM40 - BM60



SIGMA 25001320

1240016 MICROSWITCH 16A 250V

for Planetary machine (SAMMIC) BM-11 - BM-22
BM-22C - BM-42 - BM-5
for Planetary machine (SIGMA) BM10 - BM20 - BM30
BM40 - BM60 - BM80



SIGMA EL001301

SIGMA 25001301

SIGMA 25001301+25001302

Pulleys

5025882 HALF-PULLEY FOR VARIATOR \varnothing 240 mm

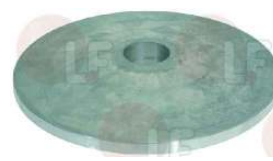
height 53 mm
for Planetary machine (SIGMA) BM60 - BM80



SIGMA 01101013

5028297 HALF-PULLEY FOR VARIATOR \varnothing 240 mm

height 47 mm
for Planetary machine (SIGMA) BM40



SIGMA 01095013



Suitable for:

SIGMA



Suitable for:

5035044 TOOTHED PULLEY \varnothing 202 mm
height 31 mm - teeth 80
for Kneader (SIGMA) BS30



SIGMA 01144063

Shock absorbers

5038347 SHOCK ABSORBER FOR LID 700N
084387
overall length 380 mm
for Planetary machine (SIGMA) BM40 - BM60 - BM80



SIGMA 08000001

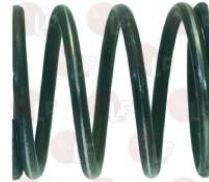
Springs

9250002 SPRING \varnothing 54x80 mm FOR VARIABLE SPEED PUL
for PLANETARY BM10-BM20-BM30



SIGMA 08097021

9250003 SPRING \varnothing 73x80 mm FOR VARIABLE SPEED PUL
for PLANETARY BM40



SIGMA 08095014

9250004 SPRING \varnothing 74x90 mm FOR VARIABLE SPEED PUL
for PLANETARY BM60



SIGMA 08101014

Switches

9319013 BLACK BIPOLAR SWITCH 15A 250V
with push-button cap
for Planetary machine (SIGMA) BM10 - BM20 - BM30
BM40



SIGMA 25003046

SIGMA 25003046+25003047

9319012 BLACK THREE-POLE SWITCH 15A 400V
with push-button cap
for Planetary machine (SIGMA) BM10 - BM20 - BM30
BM40 - BM60 - BM80



SIGMA 25003045

SIGMA 25003045+25003047



Suitable for:

Suitable for:

- 9319014 PUSH-BUTTON PANEL 0-I GREEN-RED 12A 600V**
with indicator light and push-button cap
1 normally closed contact
1 normally open contact
mounting hole \varnothing 22 mm
for Planetary machine (SIGMA) BM10 - BM20 - BM30
BM40 - BM60 - BM80



SIGMA 00003545

SIGMA 25009058

Timers

- 9446002 TIMER 120 MINUTES KIT**
complete with knob
mechanical movement with balance wheel
with left hand positioning
120 minutes manually set cycle
bipolar with contact capacity 16 (3)A 250V
max temperature 125°C
pin 7x5 mm
for Planetary machine (SIGMA) BM10 - BM20 - BM30
BM40 - BM60 - BM80



SIGMA 25007039

SIGMA 25007039+25007038

Tool holder shafts

- 5029577 ALUMINUM BOSS**
for Kneader (SIGMA) SL35



SIGMA A047018

SIGMA 01144054

- 9742008 TOOL SHAFT PIN**
size \varnothing 8x37 mm
for Planetary machine (SIGMA) BM10 - BM20 - BM30



SIGMA 01098095

Transformers

- 9739001 TRANSFORMER 0-230-400V/0-24V 10VA**
primary tension 0-230-400V 50/60Hz 10VA
secondary tension 24V
for Planetary machine (SIGMA) BM30 - BM40 - BM60
BM80



SIGMA 25008001



Suitable for:

SIGMA



Suitable for:

Whisks, hooks and flat beaters

9740011 ALUMINUM BEATER WIDTH 135 mm
overall height with coupling 290 mm
for Planetary machine (SIGMA) BM10



SIGMA 01098165

9740012 ALUMINUM BEATER WIDTH 200 mm
overall height with coupling 360 mm
for Planetary machine (SIGMA) BM20



SIGMA 01097224

9740013 ALUMINUM BEATER WIDTH 235 mm
overall height with coupling 430 mm
for Planetary machine (SIGMA) BM30



SIGMA 01161038

SIGMA 01161038-1

9740021 ALUMINUM HOOK \varnothing 28 mm
overall height with coupling 465 mm
for Kneader (SIGMA) TAURO35 - TAURO40



SIGMA 01144012

9740008 ALUMINUM HOOK ADJUSTABLE \varnothing
overall height with coupling 295 mm
for Planetary machine (SIGMA) BM10



SIGMA 01098164

9740009 ALUMINUM HOOK ADJUSTABLE \varnothing
overall height with coupling 360 mm
for Planetary machine (SIGMA) BM20



SIGMA 01097223

9740010 ALUMINUM HOOK ADJUSTABLE \varnothing
overall height with coupling 430 mm
for Planetary machine (SIGMA) BM30



SIGMA 01161039

9740020 METAL HOOK \varnothing 22 mm
overall height with coupling 400 mm
for Kneader (SIGMA) TAURO20 - TAURO25 - TAURO30



SIGMA 01147012

SIGMA 01181002

9740014 STAINLESS STEEL WHISK WITH THREADS \varnothing 3 mm
overall height with coupling 295 mm
for Planetary machine (SIGMA) BM10



SIGMA 01098114

9740015 STAINLESS STEEL WHISK WITH THREADS \varnothing 3 mm
overall height with coupling 365 mm
for Planetary machine (SIGMA) BM20

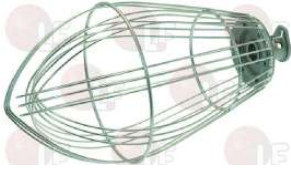


SIGMA 01097114



Suitable for:

9740016 STAINLESS STEEL WHISK WITH THREADS \varnothing 3 mm
overall height with coupling 430 mm
for Planetary machine (SIGMA) BM30



SIGMA 01161011

SIGMA



Suitable for:

5026957 STAINLESS STEEL WHISK WITH WIRES \varnothing 2 mm
overall height with coupling 265 mm
for Planetary machine (SIGMA) PE7.5



SIGMA 01175030

SIGMA 01175030-1