



Spare parts for:
Ice makers



Suitable for:

ICEMATIC



This catalogue is automatically generated.
Therefore, the sequence of the items might
not be always shown at best.
Updates will be issued in case of additions
and/or amendments.

Suitable universal spare parts may not be included

Rel. 2015-12241028





Suitable for:

ICEMATIC



Suitable for:

Baffles

3095010 DOOR BAFFLE BUSHING



ICEMATIC 25110919

3095001 DOOR BAFFLE PLATE 345x205 mm
for Icemaker (ICEMATIC) N1 - N20



ICEMATIC 25250099

3095010 DOOR BAFFLE BUSHING



ICEMATIC 25110919

3095003 DOOR BAFFLE PLATE 370x205 mm
for Icemaker (ICEMATIC) N30



ICEMATIC 25260452

3095010 DOOR BAFFLE BUSHING



ICEMATIC 25110919

3095002 DOOR BAFFLE PLATE 423x205 mm
for Icemaker (ICEMATIC) G25 - N2



ICEMATIC 25250106

3095010 DOOR BAFFLE BUSHING



ICEMATIC 25110919

3095008 DOOR BAFFLE PLATE 565x490 mm



ICEMATIC 81453072

ICEMATIC 81453131



Suitable for:

3095007 DOOR BAFFLE 366x210 mm
for Icemaker (ICEMATIC) N50
for Icemaker (ICEMATIC) N35



ICEMATIC 25260472

ICEMATIC 25260473

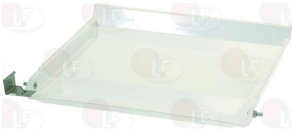
Suitable for:

3095010 DOOR BAFFLE BUSHING



ICEMATIC 25110919

3095005 DOOR BAFFLE 495x420 mm



ICEMATIC 81453008

ICEMATIC 81453130

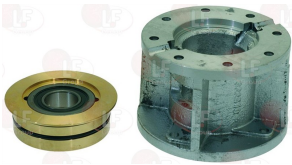
5048538 FRONT DEFLECTOR 420x337 mm



ICEMATIC 81453692

Bearings

3063081 BEARING LOWER WITH SUPPORT

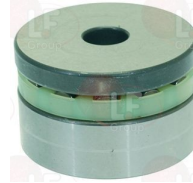


ICEMATIC CF06052700
ICEMATIC CF75400801

ICEMATIC CF060688000
ICEMATIC 29015012

ICEMATIC CF65015900
ICEMATIC 29070002

3063082 BEARING UPPER T12/8



ICEMATIC CF65105800

ICEMATIC 29015011

3063119 ICE CRUSHER COMPLETE WITH BEARING
for reduction gear and ice crusher
external \varnothing 51 mm
internal \varnothing 26 mm

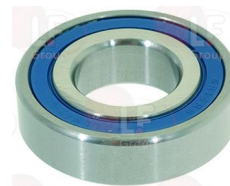


ICEMATIC CF06072000
ICEMATIC 29015001

ICEMATIC CF67004100
ICEMATIC 29060000

ICEMATIC CF75400102

3063019 LOWER BEARING SR14RS
external \varnothing 47.5 mm - internal \varnothing 22 mm
thickness 13 mm



ICEMATIC CF67001101

ICEMATIC 29015004

3063080 WATER GLAND



ICEMATIC CF65040200

ICEMATIC 29000007



Suitable for:

ICEMATIC



Suitable for:

Bushings

3324010 BUSHING 20 mm
external \varnothing 10 mm
internal \varnothing 6 mm
for Icemaker (ICEMATIC) N25S



ICEMATIC 19800179

ICEMATIC 25110914

Capacitors, electrical

3068038 RUNNING CAPACITOR 35 μ F 450V
 \varnothing 45x122h mm



ICEMATIC CF62016724

Caps

5020174 CAP \varnothing 12 mm
for Icemaker (ICEMATIC) N301M



ICEMATIC 25730503

Curtains

3443070 CURTAIN 270x70 mm
for Icemaker (ICEMATIC) N21



ICEMATIC 81401600

Doors

3389018 FRONT DOOR 1075x275 mm



ICEMATIC 81460184

ICEMATIC 81460326



Drain hoses

3450098 DRAIN PIPE \varnothing 20x2000 m m
elbow sleeve \varnothing 20 mm



ICEMATIC 19810114

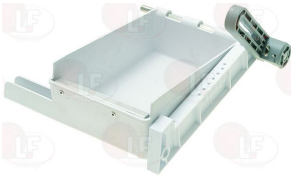
Drip trays for ice makers

3123113 DRAIN DRIP TRAY



ICEMATIC 25820129

3006009 DRIP TRAY ASSEMBLY 180x126 m m
for Icemaker (ICEMATIC) N25



ICEMATIC 81401621

3015063 TANK WATER INLET
for Icemaker (ICEMATIC) - Series N



ICEMATIC 25300000

3123111 DRIP TRAY ASSEMBLY 190x370 m m



ICEMATIC 81300066

ICEMATIC 81300067

3123112 DRIP TRAY ASSEMBLY 190x450 m m



ICEMATIC 81300090

ICEMATIC 81300091

3123108 DRIP TRAY ASSEMBLY 280x165 m m



ICEMATIC 81300045

ICEMATIC 81300045/0

ICEMATIC 81300046

ICEMATIC 8130046/0



Suitable for:

ICEMATIC



3006001 DRIP TRAY ASSY 180x120 mm
for Icemaker (ICEMATIC)
till 1/04/00 N20 - N20L - N25
for Icemaker (ICEMATIC) N45 J20



ICEMATIC 81403005

3240376 BUSHING \varnothing 26 mm
for Icemaker (ICEMATIC)



ICEMATIC 25110910

ICEMATIC 25110911

3391937 EVAPORATOR SUPPORT
for Icemaker (ICEMATIC) N20 - N30 - N40 - N50



ICEMATIC 25726122

ICEMATIC 25726124

3240377 PLASTIC LEVER
for Icemaker (ICEMATIC)



ICEMATIC 25440110

ICEMATIC 81403011

3240374 SPRING WIRE \varnothing 2.55 mm
for Icemaker (ICEMATIC)



ICEMATIC 25474602

Suitable for:

3240375 BRACKET FOR TURNOVER LEVER
for Icemaker (ICEMATIC)



ICEMATIC 25325953

ICEMATIC 25325953/1

3391936 EVAPORATOR SUPPORT
for Icemaker (ICEMATIC) N20 - N30 - N40 - N50



ICEMATIC 25726121

ICEMATIC 25726123

3300050 LOCK PIN FOR SPRING \varnothing 4.5x38 mm
for ALL MODELS



ICEMATIC 25560254

ICEMATIC 25560256

3240373 SPRING WIRE \varnothing 2.3 mm
for Icemaker (ICEMATIC)



ICEMATIC 25474600

3015063 TANK WATER INLET
for Icemaker (ICEMATIC) - Series N



ICEMATIC 25300000



Suitable for:

3240372 WASHER \varnothing 16 mm
for Icemaker (ICEMATIC)



ICEMATIC 25654016

ICEMATIC



Suitable for:

3006005 DRIP TRAY ASSY 180x445 mm
for Icemaker (ICEMATIC) N100 - N70 - N75 - N80



ICEMATIC 81423002

3391936 EVAPORATOR SUPPORT
for Icemaker (ICEMATIC) N20 - N30 - N40 - N50



3240375 BRACKET FOR TURNOVER LEVER
for Icemaker (ICEMATIC)



ICEMATIC 25325953

ICEMATIC 25325953/1

3391937 EVAPORATOR SUPPORT
for Icemaker (ICEMATIC) N20 - N30 - N40 - N50



ICEMATIC 25726121

ICEMATIC 25726123

3300050 LOCK PIN FOR SPRING \varnothing 4.5x38 mm
for ALL MODELS



ICEMATIC 25726122

ICEMATIC 25726124

3240377 PLASTIC LEVER
for Icemaker (ICEMATIC)



ICEMATIC 25560254

ICEMATIC 25560256

3240373 SPRING WIRE \varnothing 2.3 mm
for Icemaker (ICEMATIC)



ICEMATIC 25440110

ICEMATIC 81403011

3240374 SPRING WIRE \varnothing 2.55 mm
for Icemaker (ICEMATIC)



ICEMATIC 25474600

3015063 TANK WATER INLET
for Icemaker (ICEMATIC) - Series N



ICEMATIC 25474602

3240372 WASHER \varnothing 16 mm
for Icemaker (ICEMATIC)



ICEMATIC 25300000

ICEMATIC 25654016



Suitable for:

3015915 DRIP TRAY 580x685 mm



ICEMATIC 28180009

3006002 SET OF DRIP TRAYS 180x155 mm
for Icemaker (ICEMATIC) N30 - N35



ICEMATIC 81403007

3240376 BUSHING \varnothing 26 mm
for Icemaker (ICEMATIC)



ICEMATIC 25110910

ICEMATIC 25110911

3391937 EVAPORATOR SUPPORT
for Icemaker (ICEMATIC) N20 - N30 - N40 - N50



ICEMATIC 25726122

ICEMATIC 25726124

3240377 PLASTIC LEVER
for Icemaker (ICEMATIC)



ICEMATIC 25440110

ICEMATIC 81403011

3240374 SPRING WIRE \varnothing 2.55 mm
for Icemaker (ICEMATIC)



ICEMATIC 25474602

ICEMATIC



Suitable for:

3240377 PLASTIC LEVER
for Icemaker (ICEMATIC)



ICEMATIC 25440110

ICEMATIC 81403011

3240375 BRACKET FOR TURNOVER LEVER
for Icemaker (ICEMATIC)



ICEMATIC 25325953

ICEMATIC 25325953/1

3391936 EVAPORATOR SUPPORT
for Icemaker (ICEMATIC) N20 - N30 - N40 - N50



ICEMATIC 25726121

ICEMATIC 25726123

3300050 LOCK PIN FOR SPRING \varnothing 4.5x38 mm
for ALL MODELS



ICEMATIC 25560254

ICEMATIC 25560256

3240373 SPRING WIRE \varnothing 2.3 mm
for Icemaker (ICEMATIC)



ICEMATIC 25474600

3015063 TANK WATER INLET
for Icemaker (ICEMATIC) - Series N



ICEMATIC 25300000



Suitable for:

3240372 WASHER \varnothing 16 mm
for Icemaker (ICEMATIC)



ICEMATIC 25654016

ICEMATIC



Suitable for:

3006003 SET OF DRIP TRAYS 180x265 mm
for Icemaker (ICEMATIC) N40 - N50 - N55BI
for Icemaker (ICEMATIC) N45S



ICEMATIC 81413001

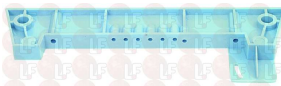
3240376 BUSHING \varnothing 26 mm
for Icemaker (ICEMATIC)



ICEMATIC 25110910

ICEMATIC 25110911

3391937 EVAPORATOR SUPPORT
for Icemaker (ICEMATIC) N20 - N30 - N40 - N50



ICEMATIC 25726122

ICEMATIC 25726124

3240377 PLASTIC LEVER
for Icemaker (ICEMATIC)



ICEMATIC 25440110

ICEMATIC 81403011

3240375 BRACKET FOR TURNOVER LEVER
for Icemaker (ICEMATIC)



ICEMATIC 25325953

ICEMATIC 25325953/1

3391936 EVAPORATOR SUPPORT
for Icemaker (ICEMATIC) N20 - N30 - N40 - N50



ICEMATIC 25726121

ICEMATIC 25726123

3300050 LOCK PIN FOR SPRING \varnothing 4.5x38 mm
for ALL MODELS



ICEMATIC 25560254

ICEMATIC 25560256

3240373 SPRING WIRE \varnothing 2.3 mm
for Icemaker (ICEMATIC)



ICEMATIC 25474600



Suitable for:

3240374 SPRING WIRE \varnothing 2.55 mm
for Icemaker (ICEMATIC)



ICEMATIC 25474602

3240372 WASHER \varnothing 16 mm
for Icemaker (ICEMATIC)



ICEMATIC 25654016

3006004 SET OF DRIP TRAYS 180x265 mm
for Icemaker (ICEMATIC) N55L - N60 - N65



ICEMATIC 81414519

ICEMATIC 81423003

3240376 BUSHING \varnothing 26 mm
for Icemaker (ICEMATIC)



ICEMATIC 25110910

ICEMATIC 25110911

3391937 EVAPORATOR SUPPORT
for Icemaker (ICEMATIC) N20 - N30 - N40 - N50



ICEMATIC 25726122

ICEMATIC 25726124

3240377 PLASTIC LEVER
for Icemaker (ICEMATIC)



ICEMATIC 25440110

ICEMATIC 81403011

ICEMATIC



Suitable for:

3015063 TANK WATER INLET
for Icemaker (ICEMATIC) - Series N



ICEMATIC 25300000

3240375 BRACKET FOR TURNOVER LEVER
for Icemaker (ICEMATIC)



ICEMATIC 25325953

ICEMATIC 25325953/1

3391936 EVAPORATOR SUPPORT
for Icemaker (ICEMATIC) N20 - N30 - N40 - N50



ICEMATIC 25726121

ICEMATIC 25726123

3300050 LOCK PIN FOR SPRING \varnothing 4.5x38 mm
for ALL MODELS



ICEMATIC 25560254

ICEMATIC 25560256

3240373 SPRING WIRE \varnothing 2.3 mm
for Icemaker (ICEMATIC)



ICEMATIC 25474600



Suitable for:

3240374 **SPRING WIRE** \varnothing 2.55 mm
for Icemaker (ICEMATIC)



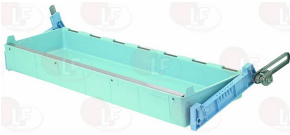
ICEMATIC 25474602

3240372 **WASHER** \varnothing 16 mm
for Icemaker (ICEMATIC)



ICEMATIC 25654016

3006006 **SET OF DRIP TRAYS** 180x680 mm
for Icemaker (ICEMATIC) N12S - N150



ICEMATIC 81442008

3240376 **BUSHING** \varnothing 26 mm
for Icemaker (ICEMATIC)



ICEMATIC 25110910

ICEMATIC 25110911

3391937 **EVAPORATOR SUPPORT**
for Icemaker (ICEMATIC) N20 - N30 - N40 - N50



ICEMATIC 25726122

ICEMATIC 25726124

3240377 **PLASTIC LEVER**
for Icemaker (ICEMATIC)



ICEMATIC 25440110

ICEMATIC 81403011

ICEMATIC



Suitable for:

3015063 **TANK WATER INLET**
for Icemaker (ICEMATIC) - Series N



ICEMATIC 25300000

3240375 **BRACKET FOR TURNOVER LEVER**
for Icemaker (ICEMATIC)



ICEMATIC 25325953

ICEMATIC 25325953/1

3391936 **EVAPORATOR SUPPORT**
for Icemaker (ICEMATIC) N20 - N30 - N40 - N50



ICEMATIC 25726121

ICEMATIC 25726123

3300050 **LOCK PIN FOR SPRING** \varnothing 4.5x38 mm
for ALL MODELS



ICEMATIC 25560254

ICEMATIC 25560256

3240373 **SPRING WIRE** \varnothing 2.3 mm
for Icemaker (ICEMATIC)



ICEMATIC 25474600



Suitable for:

3240374 SPRING WIRE \varnothing 2.55 mm
for Icemaker (ICEMATIC)



ICEMATIC 25474602

3240372 WASHER \varnothing 16 mm
for Icemaker (ICEMATIC)



ICEMATIC 25654016

3006007 SPLASH TANK HOLDER



ICEMATIC 25726473

3015067 WATER TANK



ICEMATIC 25820125

ICEMATIC



Suitable for:

3015063 TANK WATER INLET
for Icemaker (ICEMATIC) - Series N



ICEMATIC 25300000

3015063 TANK WATER INLET
for Icemaker (ICEMATIC) - Series N



ICEMATIC 25300000

Electronic printed-circuit boards

3390013 COMPLETE PCB SFT 012
with sensor



ICEMATIC XG62046200

3390015 CONDENSER TEMPERATURE SENSOR



ICEMATIC CF62040401
ICEMATIC 29070014

ICEMATIC CF62040411

ICEMATIC XP62040401



Suitable for:

3390011 SENSOR FOR EVAPORATOR TEMPERATURE
cable length 1500 mm



ICEMATIC CF62040410
ICEMATIC 29070013

ICEMATIC XP62040410

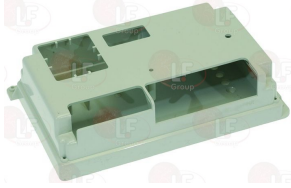
ICEMATIC 29070009

ICEMATIC



Suitable for:

3054035 COVER FOR CONTROL BOX

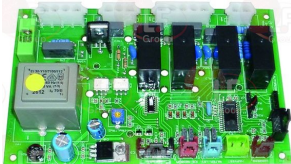


ICEMATIC CF66054600

ICEMATIC 29070021

ICEMATIC 29070021+...

5053416 ELECTRONIC BOARD ICEMOD4-A
dimensions 160x100 mm



ICEMATIC 33580150

ICEMATIC 33580250

5014496 CONDENSER TEMPERATURE SENSOR
bulb \varnothing 5x60 mm cable length 950 mm



ICEMATIC 33580101

3399040 ELECTRONIC BOARD LID F100C



ICEMATIC CF66054700

ICEMATIC 29015057

5073014 KIT SCHEDA ELETTRONICA CON SONDE



ICEMATIC 29070012

ICEMATIC 81449089

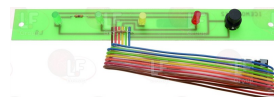
ICEMATIC 81469134

3390296 PCB WITH LED
for Icemaker (ICEMATIC) N301M



ICEMATIC 33580151

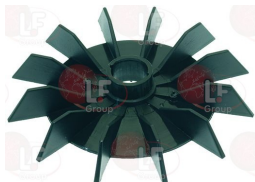
3390294 PCB WITH LED ICEMOD.DY2
for Icemaker (ICEMATIC) N500M



ICEMATIC 33580024

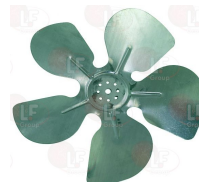
Fans for motors

3240838 FAN FOR ELECTRIC MOTOR



ICEMATIC CF65034000

3240964 SUCTION BLADE \varnothing 250 mm 28°



ICEMATIC CF62041934



Suitable for:

ICEMATIC



Suitable for:

3240965 SUCTION BLADE \varnothing 300 mm 28°



ICEMATIC CF6200001

ICEMATIC CF6204196

Fittings

3349200 DRAIN FITTING



ICEMATIC CF66022400

3349201 FITTING NUT



ICEMATIC CF66053500

3349201 FITTING NUT



ICEMATIC CF66053500

3150074 WATER DRAIN FITTING



ICEMATIC 25631050

3349190 WATER INLET FITTING \varnothing 3/8"X3/4"
for AF10 - AF20 - AF30 - ACM35



ICEMATIC CF73320400

3349250 WATER OUTLET FITTING \varnothing 20x69 mm
for Icemaker (ICEMATIC)



ICEMATIC 25690803

ICEMATIC 25690806

Floats

3188001 FLOAT ASSEMBLY



ICEMATIC CF66058500

ICEMATIC CF78312700

3527166 TAP WITH FLOAT
connection M11 x \varnothing 6 mm



ICEMATIC 19864010

ICEMATIC 19864011



Gearmotors

3240379 COMPLETE GEARMOTOR DISC
 ø 100 mm
 for Icemaker (ICEMATIC)



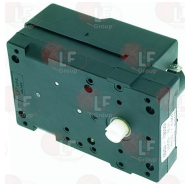
ICEMATIC 81413043

3340066 DISC FOR TILT GEARMOTOR
 for Icemaker (ICEMATIC) N20 - N30



ICEMATIC 25260000

3240360 GEARMOTOR LIP 000E
 230V 50Hz 11W 50rpm
 Counterclockwise
 for Icemaker (ICEMATIC) N25S
 for Icemaker (ICEMATIC) N45



ICEMATIC 19440059

ICEMATIC 19440060

3240371 SUPPORT FOR PADDLE MOTOR
 for Icemaker (ICEMATIC) N25S



ICEMATIC 25725433

ICEMATIC 25725439

3240363 GEARMOTOR LIP 001
 230V 50HZ 11W 0,7rpm
 Clockwise
 per N20-N20L-N30-N30L
 for Icemaker (ICEMATIC) N20 - N20L - N30 - N30L



ICEMATIC 19440058

ICEMATIC 19440063

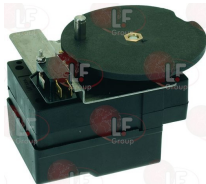
3240364 GEARMOTOR LIP 010
 230V 50Hz 11W 0.72rpm
 Counterclockwise
 for Icemaker (ICEMATIC) N100 - N12 - N12S - N150
 N4 - N40 - N5 - N50 - N55 - N55BI - N6 - N65
 N7 - N70 - N75 - N80



ICEMATIC 19440057

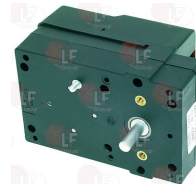
ICEMATIC 19440065

3240898 GEARMOTOR LIP 021B
 230V 50Hz 11W 1rpm
 Clockwise
 for N20 - N30
 for Icemaker (ICEMATIC) N20 - N30



ICEMATIC 81404024

3240366 GEARMOTOR LIP 137
 230V 50Hz 11W 1rpm
 Clockwise
 ex 021
 for Icemaker (ICEMATIC) N20L - N30



ICEMATIC 19440073



Suitable for:

ICEMATIC



3240371 SUPPORT FOR PADDLE MOTOR
for Icemaker (ICEMATIC) N25S



ICEMATIC 25725433

ICEMATIC 25725439

ICEMATIC 25726116

Suitable for:

3324003 TRANSMISSION SHAFT



ICEMATIC CF65115900

ICEMATIC 29000017

Gears

3212004 FINAL GEARWHEEL



ICEMATIC CF65115800

ICEMATIC 29028005

3212002 GEARBOX ASSEMBLY



ICEMATIC CFA3123001

ICEMATIC 29070007

5010311 GEARPIECE MADE OF FIBRE
large gearing \varnothing 58 mm
small gearing \varnothing 21 mm

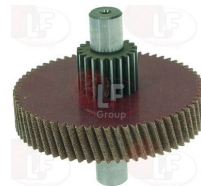


ICEMATIC CF65111600

ICEMATIC CF65116000

ICEMATIC 29028001

3212005 GEARWHEEL AND FIBRE PINION



ICEMATIC CF65115600

ICEMATIC 29028006

3212003 GEARWHEEL AND INTERM. PINION



ICEMATIC CF65115700

ICEMATIC 29028004

Hinges, catches and accessories

3053515 ADJUSTABLE HINGE



ICEMATIC 19120045

3053264 HINGE 40x35 mm

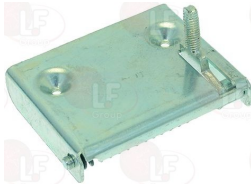
distance 27 mm
for Icemaker (ICEMATIC) N25 - N35 - N45 - N55
N70 - N90



ICEMATIC 19120050

Suitable for:

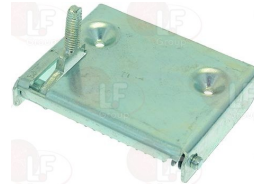
3053410 LEFT HINGE - SPRING D1.3



ICEMATIC 19120415

Suitable for:

3053412 RIGHT HINGE - SPRING D1.3



ICEMATIC 19120414

3053412 RIGHT HINGE - SPRING D1.3



ICEMATIC 19120414

Indicator lights

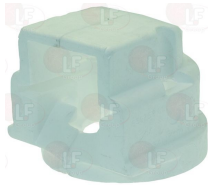
3221024 INDICATOR LAMP RED 230V
 head \varnothing 15 mm - hole \varnothing 13 mm - 120°C
 faston M 6.3x0.8 mm
 universal application



ICEMATIC 33576295

Insulators

3180045 ESCUTCHEON INSULATION



ICEMATIC CF06055101

Ironmongery (screws,nuts,washers)

5055105 CYLINDER HEAD SCREW M4x10
 stainless steel - cross recessed
 UNI 7687 - DIN 7985 - ISO 7045



ICEMATIC 12726406

5017690 CYLINDER HEAD SCREW M4x16
 stainless steel - cross recessed
 UNI 7687 - DIN 7985 - ISO 7045



ICEMATIC 12726408



Suitable for:

ICEMATIC



5010319 SELF-TAPPING SCREW \varnothing 2.9x16 mm
stainless steel - cylinder head
cross recessed - C type end
UNI 6954 - DIN 7981 - ISO 7049



ICEMATIC 12726141

Suitable for:

5032024 SELF-TAPPING SCREW \varnothing 4.2x16 mm
stainless steel - countersunk flat head
cross recessed - C type end
UNI 6955 - DIN 7982 - ISO 7050



ICEMATIC 12728026

3240372 WASHER \varnothing 16 mm
for Icemaker (ICEMATIC)



ICEMATIC 25654016

Level sensors

3390012 ICE LEVEL CONTROL SENSOR



ICEMATIC 29070010

ICEMATIC 33580065

ICEMATIC 33580065/1

3390139 PROBE FOR WATER LEVEL
length 1800 mm



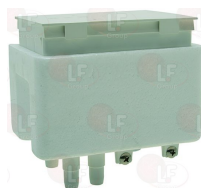
ICEMATIC CF62040404

ICEMATIC 29015055

ICEMATIC 29070016

Level tanks

3188002 TANK AND FLOAT ASSY



ICEMATIC CF79312601

ICEMATIC 29087022

3188001 FLOAT ASSEMBLY



ICEMATIC CF66058500

ICEMATIC CF78312700

3188004 TANK LID



ICEMATIC CF66036300

3188004 TANK LID



ICEMATIC CF66036300

Lubricants

3180019 REDUCTION GEAR GREASE 0.5 Kg



ICEMATIC CF06029401

ICEMATIC CF06029404

Microswitches

3240886 FLOAT MICROSWITCH



ICEMATIC 81300012

ICEMATIC 81300027

ICEMATIC 81300027+25725558

3240351 FLOAT MICROSWITCH FOR DRIP TRAY
contact capacity 4A 230V
for Icemaker (ICEMATIC) N100 - N20L - N30 - N40
N50 - N55 - N55BI - N65 - N75 - N80



ICEMATIC 81404080

ICEMATIC 81409179

3240352 FLOAT MICROSWITCH FOR DRIP TRAY
contact capacity 4A 230V
for Icemaker (ICEMATIC) N12S(VDE) - N140 - N150
for Icemaker (ICEMATIC) N140



ICEMATIC 81449091

3240610 MAGNET FOR HOOD MICROSWITCH
dimensions 40x13x8 mm



ICEMATIC 19355004

ICEMATIC 19355007

3240883 MICROSWITCH
F83 161.1 16A - 250V
for Icemaker (ICEMATIC) N20 - N30



ICEMATIC

3240885 MICROSWITCH
Z15 GW 22B 16A 250V
for Icemaker (ICEMATIC) N1 - N12 - N2 - N3 - N4
N5 - N6 - N7



ICEMATIC 19410300

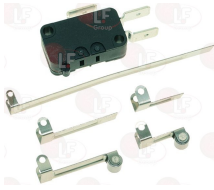


Suitable for:

Suitable for:

3240407 MICROSWITCH KIT 16A 250V
 3 locking positions
 the kit includes 5 levers:
 lever 75 mm - lever 27 mm - lever 15 mm
 lever 15 mm with wheel - lever 27 mm with wheel

3803055 MICROSWITCH SUPPORT



ICEMATIC 19410207

ICEMATIC 25474578

ICEMATIC 25525419

3803009 MICROSWITCH 16A 250V V166-1CR5



ICEMATIC 19410208

3240350 MICROSWITCH 16A 230V
 for Icemaker (ICEMATIC) N100 - N12S(VDE) - N150
 N20 - N20L - N30 - N40 - N50 - N55 - N55BI
 N65 - N75 - N80

3803055 MICROSWITCH SUPPORT



ICEMATIC 19410201

ICEMATIC 19410209

ICEMATIC 25525419

Motors

3240376 BUSHING \varnothing 26 mm
 for Icemaker (ICEMATIC)



ICEMATIC 25110910

ICEMATIC 25110911

3240211 MOTORELCO VN 10-20 PENTA VALENT
 230V 50/60Hz 10/38W 1300rpm

3240220 SUCTION BLADE \varnothing 200 mm 28°



ICEMATIC CF62041902
ICEMATIC 29020003

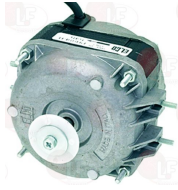
ICEMATIC 18562496

ICEMATIC 29020001

ICEMATIC 18740023

Suitable for:

3240902 MOTOR ELCO VN 16-25 PENTAVENT
230V 50/60Hz 16/65W 1300rpm



ICEMATIC CF62041904

Suitable for:

3240220 SUCTION BLADE ø 200 mm 28°



ICEMATIC 18740023

3240904 MOTOR ELCO VN 34-45 PENTAVENT
230V 50/60Hz 34/120W 1300rpm



ICEMATIC CF62041906

ICEMATIC 29020005

3240220 SUCTION BLADE ø 200 mm 28°



ICEMATIC 18740023

3240631 MOTOR EMI 83D-2535
230V 50/60Hz 35/95W 1300rpm
with starting capacitor 2.5µF
4 screws M4 for flange and bracket mounting
distance 17 mm
shaft length 34 mm



ICEMATIC 18562524

Nozzles for ice makers

3390516 3-NOZZLE CAPS KIT
with gaskets and screws



ICEMATIC CF06052900

ICEMATIC CF66051901

OR and ORM gaskets

3390511 GASKET O-RING SILICONE TRANSPARENT
ø 75 mm



ICEMATIC CF64004120

ICEMATIC 29000022

3061040 GASKET O-RING 04137 EPDM



ICEMATIC CF64009302

ICEMATIC 29000023



Suitable for:

Suitable for:

3786202 O-RING OR 03850 EPDM

3243139 O-RING 02025 EPDM



ICEMATIC 1300061738

ICEMATIC CF64010000

1186411 O-RING 02031 EPDM

1186833 O-RING 03100 EPDM



ICEMATIC 4102048

ICEMATIC CF64004101

ICEMATIC 29000002

1186693 O-RING 04325 EPDM



ICEMATIC CF64009300

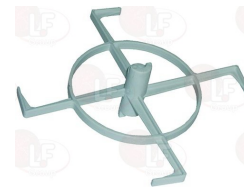
ICEMATIC 29000008

ICEMATIC 29090032

Paddle shafts for ice makers

3300002 BLADE FOR MIXER
for Icemaker (ICEMATIC) N140 - N25S
for Icemaker (ICEMATIC) N140

3240892 MIXER BLADE



ICEMATIC 2455520

ICEMATIC 2455522

ICEMATIC 2554520

ICEMATIC 2554509

ICEMATIC 2781336

ICEMATIC 2554520/2

ICEMATIC 2554521

ICEMATIC 2554522

3240893 PADDLE SHAFT SUPPORT BUSHING



ICEMATIC 25110924

ICEMATIC 2781221



ICEMATIC



Suitable for:

3005004 PADDLE SHAFT 165 mm
for Icemaker (ICEMATIC) N20 - N20L - N25S



ICEMATIC 25030006

Suitable for:

3391050 SUPPORTS FOR PADDLED SHAFT
for all models
for Icemaker (ICEMATIC) N25S



ICEMATIC 25726115

ICEMATIC 25726115/3

3005005 PADDLE SHAFT 205 mm
for Icemaker (ICEMATIC) N30 - N30L



ICEMATIC 25030007

3391050 SUPPORTS FOR PADDLED SHAFT
for all models
for Icemaker (ICEMATIC) N25S



ICEMATIC 25726115

ICEMATIC 25726115/3

3005006 PADDLE SHAFT 315 mm
for Icemaker (ICEMATIC) N40 - N50 - N55 - N55BI
N55L - N65



ICEMATIC 25030010

3391050 SUPPORTS FOR PADDLED SHAFT
for all models
for Icemaker (ICEMATIC) N25S



ICEMATIC 25726115

ICEMATIC 25726115/3

3005007 PADDLE SHAFT 495 mm
for Icemaker (ICEMATIC) N100 - N75 - N80



ICEMATIC 25030011

ICEMATIC 25030011

3391050 SUPPORTS FOR PADDLED SHAFT
for all models
for Icemaker (ICEMATIC) N25S



ICEMATIC 25726115

ICEMATIC 25726115/3

Pins

3300050 LOCK PIN FOR SPRING \varnothing 4.5x38 mm
for ALL MODELS



ICEMATIC 25560254

ICEMATIC 25560256



Suitable for:

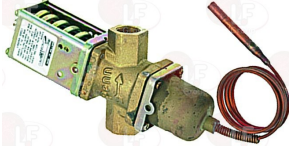
ICEMATIC



Suitable for:

Pressure valves for refrigeration

3526550 PRESSURE VALVE V46AA-9950 G 3/8"
pressure range 5..18 bar
capillary length 750 mm - fitting to be welded
for Icemaker (ICEMATIC) N30W



ICEMATIC CF62011100

ICEMATIC 19870815

Probes

3390015 CONDENSER TEMPERATURE SENSOR



ICEMATIC CF62040401
ICEMATIC 29070014

ICEMATIC CF62040411

ICEMATIC XP62040401

5014496 CONDENSER TEMPERATURE SENSOR
bulb \varnothing 5x60 mm cable length 950 mm



ICEMATIC 33580101

5053865 PROBE NTC EVAPORATOR
bulb \varnothing 5x60 mm - cable length 1500 mm



ICEMATIC CF62051901

ICEMATIC 33580297

3390011 SENSOR FOR EVAPORATOR TEMPERATURE
cable length 1500 mm



ICEMATIC CF62040410
ICEMATIC 29070013

ICEMATIC XP62040410

ICEMATIC 29070009

Pump motors

3122010 ELECTROPUMP REBO MH30F1 LH
30W 230V 50Hz cl.B
connections \varnothing 13 mm
Alternative GRE 620433-00



ICEMATIC CS62043300

ICEMATIC 19550113

3122266 ELECTROPUMP GRE 620430-03
50W 230V 50Hz
connection \varnothing 21 mm
for new series
alternative REBO MH50F 60W 230V 50Hz



ICEMATIC 19550109



Suitable for:

Suitable for:

3122380 ELECTROPUMP REBO MH30F1 RH
 30W 230V 50Hz
 connections ø 13 mm



ICEMATIC 19535157

Relays

3351901 POWER RELAY FINDER 60.62.8.230.0000
 230V 50/60Hz
 2 exchange contacts 10A



ICEMATIC 19620101

ICEMATIC 19620107

3351602 POWER RELAY FINDER 65.31.8.230.0300
 230V 50/60Hz
 1 contact NO 30A



ICEMATIC 19620103

Scrolls

3719001 ICE-BREAKER SCROLL

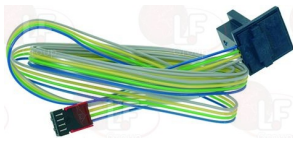


ICEMATIC CF72419803

ICEMATIC CF78419803

Sensors

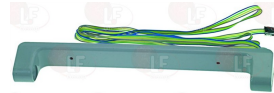
3390144 HALL EFFECT SENSOR



ICEMATIC CF62040403

ICEMATIC 29070015

3390017 ICE LEVEL CONTROL SENSOR
 total length 310 mm

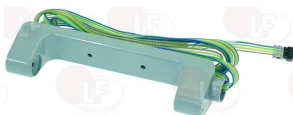


ICEMATIC CF65067400
 ICEMATIC 33580175

ICEMATIC XP65067400

ICEMATIC 29040018

3390135 ICE LEVEL SENSOR
 length 180 mm

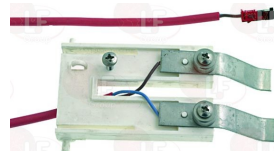


ICEMATIC CF65067402
 ICEMATIC 33580104

ICEMATIC CF72503401

ICEMATIC 29070017

3390018 ICE THICKNESS SENSOR
 cable 850 mm
 for Icemaker (ICEMATIC) N301M
 for Icemaker (ICEMATIC) N201M



ICEMATIC 81453007

ICEMATIC 81453114

ICEMATIC 81453434



Suitable for:

ICEMATIC



5053415 **SENSOR FOR ICE LEVEL CONTROL**
cable 900 mm



ICEMATIC 81455094

Suitable for:

5025905 **SENSOR FOR WATER LEVEL**
thread M3 - overall length 100 mm



ICEMATIC CF72421506

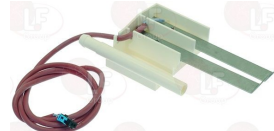
ICEMATIC 29070018

5035476 **SENSOR FOR WATER LEVEL**



ICEMATIC 81455065

3390297 **WATER LEVEL SENSOR**



ICEMATIC 81453590

ICEMATIC 81453796

Solenoid valves

3120917 **COIL PARKER YB14 220V 14W WITH CABLE**
50/60Hz



ICEMATIC CF62030648

3120950 **OUTLET SOLENOID VALVE ELTEK**
connections \varnothing 10 mm
220/240V 50/60Hz 15VA



ICEMATIC 19865532

ICEMATIC 19865598

3120224 **PARKER SOLENOID VALVE PM 127 ALS**
pipe \varnothing 6 mm
orifice \varnothing 1.9 mm



ICEMATIC CF62030622

5051332 **SOLEN. VALVE DELTROL CONTROLS D-70**
230V 50/60Hz 45W
57376-63 - intermittent work cycle
for Icemaker (ICEMATIC) N302M



ICEMATIC 19270501

5051333 **SOLEN. VALVE DELTROL CONTROLS DSVP12N**
230V 50/60Hz 14.5W
hose-end fitting inlet \varnothing 17.4mm /16mm outlet
continuous cycle operations
2LSX-240LK 74013-60



ICEMATIC 19865540

3120505 **SOLEN. VALVE ELBITYPE 329 1 WAY 180°**
24V 50/60Hz - max. temperature 90°C
inlet 3/4" - outlet \varnothing 10.5 mm



ICEMATIC 19865537

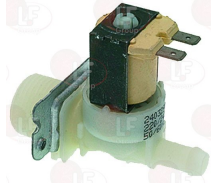


Suitable for:

Suitable for:

3120951 SOLENOID VALVE ELBI 329 1 WAY 180°
 220/240V - 50/60Hz - max temperature 90°C
 inlet 3/4" - two outlets ø 10.5 mm
 outlet with white adjuster 2 L/min
 for AIR COOLING VERSION
 for Icemaker (ICEMATIC) N100 - N12S - N150 - N20
 N20L - N30 - N40 - N50 - N55 - N55BI - N65
 N75 - N80

3120952 SOLENOID VALVE ELBI 349 2 WAY 180°
 220/240V 50/60Hz - max temperature 90°C
 inlet 3/4" - two outlets ø 10.5 mm
 1 outlet with neutral adjuster 1.2 L/min
 for WATER COOLING VERSION
 for Icemaker (ICEMATIC) N12S - N20 - N20L - N30
 N40 - N55 - N55B - N75



ICEMATIC 19865502

ICEMATIC 19865509

3120375 SOLENOID VALVE 1 WAY 180°
 220/240V 50/60Hz - max. temperature 90°C
 inlet 3/4" - outlet ø 10.5 mm
 outlet with brown adjuster 1.2 L/min

3120905 SOLENOID VALVE 1028/M10 ø 10 mm
 direct action NC



ICEMATIC 19865518

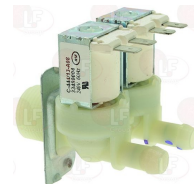
ICEMATIC 19863034

ICEMATIC 19863036

ICEMATIC 19863037

3120381 SOLENOID VALVE 2-WAY 180°
 220/240V 50/60Hz - max. temperature 90°C
 inlet 3/4" - two outlets ø 10.5 mm
 1 outlet with brown adjuster 1.2 L/min
 1 outlet with yellow adjuster 2.5 L/min

5036744 SOLENOID VALVE 2-WAY 180°
 220/240V 50/60Hz - max. temperature 90°C
 inlet 3/4" - two outlets ø 10.5 mm
 with 2 white flow rate adjusters



ICEMATIC XP65010551

ICEMATIC 19865530

3120195 SOLENOID VALVE 220V 50/60Hz
 for water drain ø 14 mm



ICEMATIC 19865525

ICEMATIC 19865597

ICEMATIC 81454760



Suitable for:

ICEMATIC



Suitable for:

Springs

3240373 SPRING WIRE \varnothing 2.3 mm
for Icemaker (ICEMATIC)



ICEMATIC 25474600

3240374 SPRING WIRE \varnothing 2.55 mm
for Icemaker (ICEMATIC)



ICEMATIC 25474602

5003231 SPRING WIRE \varnothing 3 mm



ICEMATIC 25474601

Supports

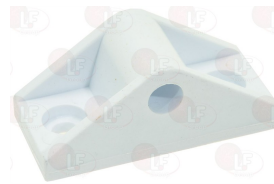
3240375 BRACKET FOR TURNOVER LEVER
for Icemaker (ICEMATIC)



ICEMATIC 25325953

ICEMATIC 25325953/1

3391016 DEFLECTOR SHAFT HOLDER
for Icemaker (ICEMATIC) N25 - N35 - N45 - N50BI
N55 - N70 - N90



ICEMATIC 25726279

ICEMATIC 25726478

3391936 EVAPORATOR SUPPORT
for Icemaker (ICEMATIC) N20 - N30 - N40 - N50



ICEMATIC 25726121

ICEMATIC 25726123

3391937 EVAPORATOR SUPPORT
for Icemaker (ICEMATIC) N20 - N30 - N40 - N50



ICEMATIC 25726122

ICEMATIC 25726124

3240896 PADDLE SHAFT SUPPORT
internal hole \varnothing 4 mm



ICEMATIC 25725554

ICEMATIC 2781223

3391050 SUPPORTS FOR PADDLED SHAFT
for all models
for Icemaker (ICEMATIC) N25S



ICEMATIC 25726115

ICEMATIC 25726115/3



Thermostatic valves for refrigeration

5064225 VALVE THERMOSTATIC DANFOSS TUC 4

orifice 4 - power 2.1Kw
calibration field -30+10°C
cooling gas R404a/R507
inlet 6 mm - outlet 10 mm
068U-2894

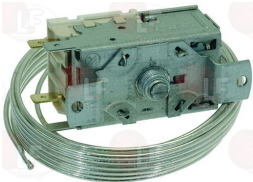


ICEMATIC 19870402

Thermostats

3444534 CONTAINER THERMOSTAT K50L3324

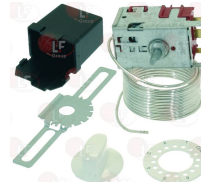
2 contacts 6A 250V
capillary 2000 mm
screw adjustable
for Icemaker (ICEMATIC) N21



ICEMATIC 19797026

3444533 DANFOSS THERMOSTAT 077B7008

3 contacts 6A 250V
capillary 2000 mm
D-shaped pin \varnothing 6x4.6 mm
COLD -2°C, WARM +10°C



ICEMATIC 19797007

ICEMATIC 19797012

3444156 EVAPORATOR THERMOSTAT K22 L1020

3 contacts 6A 250V
capillary 2000 mm
bulb \varnothing 8x40 mm
COLD -20.5°C - WARM -1.0°C
with adjusting screw



ICEMATIC 19797009

3744054 SAFETY THERMOSTAT RANCO LM7 P5098

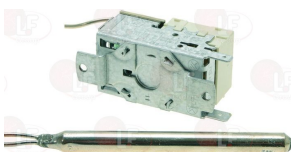
2 contacts
actuation 80°C
differential 6°C



ICEMATIC 19797023

3444250 THERMOSTAT FOR CONTAINER K55 L5081

2 contacts 6A 250V
capillary 1200 mm
bulb \varnothing 10x110 mm
for Icemaker (ICEMATIC) N12S - N140 - N20 - N20L
N30 - N40 - N50 - N55 - N65
for Icemaker (ICEMATIC) N140

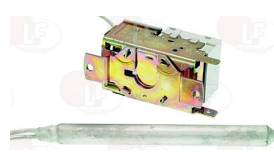


ICEMATIC 19797017

ICEMATIC 19797302

3444252 THERMOSTAT FOR CONTAINER K55 L5082

2 contacts 6A 250V
capillary 1100 mm
bulb \varnothing 10x110 mm
for Icemaker (ICEMATIC) N1 - N100 - N12 - N2 - N20
N3 - N30 - N7 - N75 - N80



ICEMATIC 19797018

ICEMATIC 19797303



Suitable for:

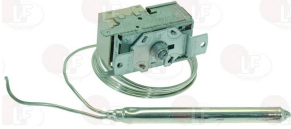
ICEMATIC



Suitable for:

3444205 THERMOSTAT FOR CONTAINER K55L1042

2 contacts 6A 250V
capillary length 1200 mm
bulb \varnothing 10x110 mm
COLD +1.7°C - WARM +9.5°C
with adjusting screw



ICEMATIC 3824917

Watertight seals and rings

3453901 REDUCER OIL SEAL

internal: \varnothing 12 mm
external \varnothing 18 mm



ICEMATIC CF64008300

ICEMATIC 29040001

3453902 REDUCER OIL SEAL

internal: \varnothing 21 mm



ICEMATIC CF02160700

ICEMATIC CF64001901

3063021 REDUCTION GEAR STUFFING GLAND






















ICEMATIC CF64004000

ICEMATIC 29000003

The data herewith contained may change without notice and LF SpA cannot be held responsible for possible errors stated or resulting by the use of this document. All rights reserved. No part of this publication may be reproduced without written permission by LF SpA.



Distributing Components, Spare Parts & Accessories in original quality worldwide

-
-  **LF SpA HEADQUARTERS**
via Voltri, 80 - 47522 Cesena (FC) ITALY
Tel. +39 0547 34 11 11 - Fax +39 0547 34 11 10
www.lfircambi724.it - www.lfircambi724.mobi
info@lfircambi.it
Export Dept.: Tel. +39 0547 34 11 50 - Fax: +39 0547 34 11 55
www.lfspareparts724.com - www.lfspareparts724.mobi
export@lfspareparts.com
-  **LF SpA HOUSEHOLD COMPONENTS DIVISION**
Via Padriciano, 34149 Trieste - Italia - AREA Science Park
Tel. +39 0547 34 12 42 - Fax +39 0547 34 12 48
www.lfspareparts724.com - www.lfspareparts724.mobi
info@lfspareparts.com
-  **EPGC Sas FRANCE**
13, Rue des Forts - 59960 Neuville en Ferrain
Tel. +33 (0)3 20 25 06 21
Fax +33 (0)3 20 25 34 12
www.epgc.com
www.epgc724.mobi
epgc@epgc.com
-  **LF GmbH GERMANY**
Junkersstrasse, 3 - D-82178 Puchheim - München
Tel. +49 89 89 45 78 66
Fax +49 89 89 45 78 88
www.lfersatzteile724.de
www.lfersatzteile724.mobi
info@lfersatzteile.de
-  **LF China REPUBLIC OF CHINA**
Room 403, No.2, Huadu Mansion, Lane 422, Huanghua Rd.
Minhang Dist. - 201103 Shanghai
Tel. +86 (0)21 33 53 66 31
Fax +86 (0)21 33 53 66 32
www.lfspareparts724.com
www.lfspareparts724.mobi
china@lfspareparts.com
-  **OOO LF RUSSIAN FEDERATION**
Ul. Anatoliya Zhivova, 8 - office 1 - 123100 Moscow
Tel./Fax +7 495 725 26 53
www.lfspareparts724.ru
www.lfspareparts724.mobi
info@lfspareparts.ru
-  **LF Repuestos Horeca S.L.U. SPAIN**
Poligono Industrial Carpetania - C/Miguel Faraday, 8 - 28906 Getafe
Tel. +34 91 477 91 00
Fax +34 91 477 90 81
www.lfrepuestos-horeca724.es
www.lfrepuestos724.mobi
info@lfrepuestos.es
-  **LF SpA Cesena (IT) Swiss Branch Steinhausen SWITZERLAND**
Sennweidstrasse, 45 - CH-6312 Steinhausen
Tel. +41 (0)41 760 15 80-1
Fax +41 (0)41 760 15 85
www.lfersatzteile724.ch
www.lfersatzteilech724.mobi
info@lfersatzteile.ch
-  **LF Spare Parts Ltd. UNITED KINGDOM**
A10a Lakeside Business Park, Broadway Lane
South Cerney, Gloucestershire GL7 5XL
Tel. +44 (0)1285 86 16 25
Fax +44 (0)1285 86 39 49
www.lfspareparts724.co.uk
www.lfspareparts724.mobi
info@lfspareparts.co.uk
-
-  **AUSTRALIA AND NEW ZEALAND**
www.lfspareparts724.com
andrea.calvio@lfspareparts.com
-  **AUSTRIA**
www.lfersatzteile724.at
info@lfersatzteile.at
-  **BALKAN COUNTRIES**
www.lfspareparts724.com
matijaramov@lfspareparts.com
-  **BALTIC COUNTRIES**
www.lfspareparts724.com
inara.silina@lfspareparts.com
-  **CENTRAL AND EASTERN EUROPE**
www.lfspareparts724.cz
jiri.kremla@lfspareparts.cz
-  **DENMARK**
www.lfspareparts724.dk
michael.leth@lfspareparts.com
-  **JAPAN**
www.lfspareparts724.jp
hiroshi.ukai@lfspareparts.jp
-  **SOUTH KOREA**
www.lfspareparts724.com
fabio.doni@lfspareparts.com
-  **TURKEY**
www.lfyedekparca724.com
basar.ergun@lfyedekparca.com
-  **USA AND CANADA**
www.lfspareparts724.us
sauro.dallaglio@lfspareparts.us
howard.truitt@lfspareparts.us