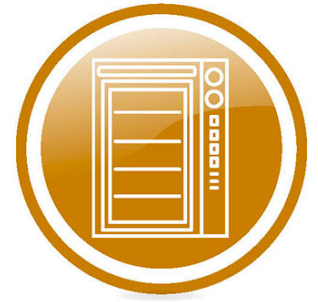




Spare parts for:

**Ovens**



Suitable for:

**BEST FOR**



This catalogue is automatically generated.  
Therefore, the sequence of the items might  
not be always shown at best.

Updates will be issued in case of additions  
and/or amendments.

*Suitable **universal spare parts** may not be included*

Rel. 2015-10221656





Suitable for:

# BEST FOR



Suitable for:

## Actuators

**5066848 ACTUATOR 230V 50/60Hz**  
for Convection oven (BEST FOR) RACK - 1011 - 1021  
1065 - 433 - 446 - 465 - 511 - 523 - 665



BEST FOR 304200000

BEST FOR 734600003

## Buzzers

**3397059 OVEN ALARM**  
for Convection oven (BEST FOR) BISTROT1065  
BISTROT433 - BISTROT446 - BISTROT465  
BISTROT665 - GOURMET1011 - GOURMET1021  
GOURMET511 - GOURMET523 - RACK



BEST FOR 379200000

## Controllers and changeover switches

**3446215 TIMER P255 2 CAMS 230V 50Hz**  
cycle 5 minutes - hexagonal pin 6 mm  
for Convection oven electric (BEST FOR)  
BISTROT1064 - BISTROT664

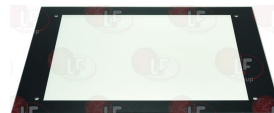
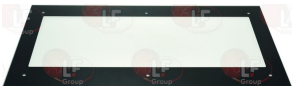


BEST FOR 182500028

## Door glasses for oven and accessories

**5047061 GLASS INNER OVEN DOOR 1014x570 mm**

**5029491 GLASS INNER OVEN DOOR 770x564 mm**



BEST FOR 391510020

BEST FOR 391505400

BEST FOR 391505400+...

**5053143 GLASS INNER OVEN DOOR 785x560 mm**



BEST FOR 391506501

## Electronic controllers

**3445137 THERMOSTAT EK354A TCJ**

power supply 230Vac 50/60Hz  
 thermostat setting range -0+600°C  
 ceiling and deck dual temperature setting  
 2 relay outputs 6(2)A 250V for heating elements  
 1 relay output 6(2)A 250V for heating  
 1 relay output 6(2)A 250V for chamber light  
 inbuilt alarm buzzer  
 room temperature 0+55°C  
 thermocouple TCJ type probe (not included)  
 connections by screwed terminal block  
 front dimensions 72x144x79 mm  
 mounting hole 138x67 mm  
 delayed starting  
 with cooking timer - steam control



BEST FOR

**5036703 THERMOSTAT EVK411 TCJ**

power supply 230V  
 thermostat setting range -100+800°C  
 ON-OFF control with one actuation point only  
 1 changeover relay output 8(3)A 250V  
 TCJ type probe (not included)  
 room temperature 0+55°C  
 access to configuration parameters through  
 password - data exchange serial port  
 connections by screw terminal block  
 front dimensions 74x32x65 mm  
 mounting hole 71x29mm  
 for Convection oven electric (BEST FOR)  
 BISTROT1064 - BISTROT664  
 Series CHEF 6 TEGLIE



BEST FOR 182500010

**3397093 PROBE THERMOCOUPLE TCJ**

twin wire - temperature 0-250°C  
 probe length 100 mm  
 cable length 950 mm  
 for Convection oven (BEST FOR) BISTROT1064  
 BISTROT1065 - BISTROT433 - BISTROT446  
 BISTROT465 - BISTROT664 - BISTROT665  
 GOURMET1011 - GOURMET1021 - GOURMET511  
 GOURMET523 - GOURMET711 - RACK



BEST FOR 179600000



Suitable for:

# BEST FOR



Suitable for:

## Electronic printed-circuit boards

**3390082 DIGITAL CONTROL PANEL**  
complete with electronic board  
front size 300x110 mm



BEST FOR 780605040

**3397059 OVEN ALARM**  
for Convection oven (BEST FOR) BISTROT1065  
BISTROT433 - BISTROT446 - BISTROT465  
BISTROT665 - GOURMET1011 - GOURMET1021  
GOURMET511 - GOURMET523 - RACK



BEST FOR 379200000

**3390083 DIGITAL CONTROL PANEL 1st SERIES**  
complete with electronic board  
front size 300x110 mm



BEST FOR 780605044

BEST FOR 780605046

**3399014 BLACK ELECTRONIC PLATE 10 PROGRAMS**  
dimensions 300x100 mm - adhesive



BEST FOR 382000012

**3397059 OVEN ALARM**  
for Convection oven (BEST FOR) BISTROT1065  
BISTROT433 - BISTROT446 - BISTROT465  
BISTROT665 - GOURMET1011 - GOURMET1021  
GOURMET511 - GOURMET523 - RACK



BEST FOR 379200000

## Fans for motors

**5034182 FAN  $\varnothing$  200 mm**  
thickness 61 mm  
blades number 45 - hole  $\varnothing$  8 mm  
for Convection oven electric (BEST FOR)  
BISTROT1064 - BISTROT364/05 - BISTROT664



BEST FOR 391500011

BEST FOR 391500016

**3240336 FAN  $\varnothing$  300 mm**  
thickness 80 mm  
total straight blades 12 - hole  $\varnothing$  22 mm



BEST FOR 591500007

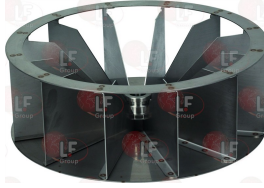


## BEST FOR



Suitable for:

**5058595 FAN  $\varnothing$  300 mm**  
thickness 105 mm  
number of blades 12 - conical hole  $\varnothing$  20-22 mm



BEST FOR 591500009

Suitable for:

**3240330 FIXING SCREW FOR FAN M12x1.5 LEFTHAND**



BEST FOR 393000001

## Fittings

**5064967 COUPLING ELBOW JG PM211208E**  
with red brackets  
elbow  $\varnothing$  12 mm - hose  $\varnothing$  8 mm  
for Convection oven (BEST FOR)



BEST FOR 374000020

## Gaskets and seals

**3186530 GLASS ASSEMBLY KIT - 10 PCS**



BEST FOR 308200001

BEST FOR 743600000

BEST FOR 743600010

## Gaskets for oven door

**5060204 GASKET FOR OVEN DOOR 5300 mm**  
made of silicone elastomer  
profile dimensions 23x14 mm  
COLOUR: BLACK  
for Convection oven electric (BEST FOR)  
BISTROT1065 - BISTROT364/12 - BISTROT433  
BISTROT434/12 - BISTROT446 - BISTROT464/12  
BISTROT465 - BISTROT665 - GOURMET1011  
GOURMET1021 - GOURMET511 - GOURMET523 - RACK



BEST FOR 331807020

**3286004 OVEN DOOR GASKET - 24 m**  
made of silicone elastomer  
profile dimensions 25.6x11 mm  
BLACK COLOR  
for Convection oven (BEST FOR)



BEST FOR 331800008



Suitable for:

# BEST FOR



**3286076 OVEN DOOR GASKET - 3 m**  
 made of silicone elastomer  
 profile dimensions 25.6x11 mm  
 BLACK COLOUR  
 for Convection oven (BEST FOR)



BEST FOR 331800008

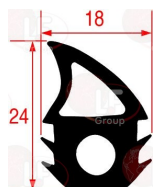
Suitable for:

**3286003 OVEN DOOR GASKET - 6 m**  
 made of silicone elastomer  
 profile dimensions 25.6x11 mm  
 BLACK COLOR  
 for Convection oven (BEST FOR)



BEST FOR 331800008

**5053760 OVEN DOOR GASKET 4000 mm**  
 made of silicone elastomer  
 profile dimensions 24x18 mm  
 COLOUR BLACK  
 for OVEN



BEST FOR 331800011

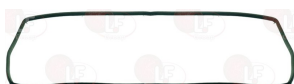
**3786595 OVEN DOOR GASKET 6400 mm**  
 made of silicone elastomer  
 profile dimensions 22x11 mm  
 COLOUR BLACK  
 for Convection oven (BEST FOR) BISTROT1064  
 BISTROT364/05 - BISTROT434/05 - BISTROT464/05  
 BISTROT664 - GOURMET711



BEST FOR 331800003

BEST FOR 331800015

**3786594 OVEN DOOR GASKET 650x340 mm**  
 made of silicone elastomer  
 with fastening clips  
 COLOUR BLACK  
 for Convection oven electric (BEST FOR) BISTROT464



BEST FOR 331800006

## Guard grids

**3240335 FAN GRILL ø 325 mm**



BEST FOR 331605000

BEST FOR 331606501



## Handles

**3242415 DOOR HANDLE CATCH**  
 distance between mounting holes 37 mm  
 for Convection oven electric (BEST FOR)  
 BISTROT1064 - BISTROT664 - GOURMET711



BEST FOR 311506000

**3242726 STRIKE FOR DOOR HANDLE**  
 dimensions 60x23 mm - mount.holes distance 40 mm  
 for Convection oven electric (BEST FOR)  
 BISTROT1064 - BISTROT664 - GOURMET711



BEST FOR 501406020

**3242127 DOOR LOCK**



BEST FOR 510510022

**3242128 OVEN HANDLE KIT**

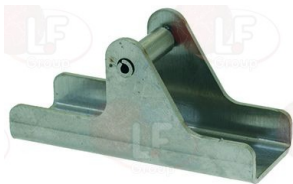


BEST FOR 629310020  
 BEST FOR 743600002

BEST FOR 664110020

BEST FOR 676010020

**3242726 STRIKE FOR DOOR HANDLE**  
 dimensions 60x23 mm - mount.holes distance 40 mm  
 for Convection oven electric (BEST FOR)  
 BISTROT1064 - BISTROT664 - GOURMET711



BEST FOR 501406020

## Heating elements

**5028483 HEATING ELEMENT 11700W 220V**  
 external  $\varnothing$  398 mm - overall height 200 mm  
 flange 142x25 mm



BEST FOR 373500016

**5034181 HEATING ELEMENT 1500W 230V**  
 external  $\varnothing$  195 mm - overall height 88 mm  
 flange 100x22 mm  
 for Convection oven electric (BEST FOR)  
 BISTROT434/05



BEST FOR 373500003



Suitable for:

## BEST FOR



**5039191 HEATING ELEMENT 15000W 230V**  
 external  $\varnothing$  395 mm - overall height 203 mm  
 flange 142x25 mm  
 for Convection oven electric (BEST FOR)  
 ROTORBAKE E8



BEST FOR 373500026

**5070232 HEATING ELEMENT 2000W 240V**  
 external  $\varnothing$  190 mm - overall height 105 mm  
 flange 70x22 mm



BEST FOR 373500013

**5030103 HEATING ELEMENT 3100W 230V**  
 external  $\varnothing$  233 mm - overall height 98 mm  
 flange 100x22 mm  
 for Convection oven electric (BEST FOR)  
 BISTROT364W/12 - BISTROT434W/12  
 BISTROT464/05 - BISTROT464W/12 - GOURMET523  
 433



BEST FOR 373500041

**5052894 HEATING ELEMENT 3990W 230V**  
 external  $\varnothing$  228 mm - overall height 103 mm  
 flange 100x22 mm  
 for Convection oven electric (BEST FOR)  
 BISTROT364/05 - BISTROT664 - GOURMET711



BEST FOR 373500032

**5030205 HEATING ELEMENT 5000W 230V**  
 external  $\varnothing$  228 mm - overall height 102 mm  
 flange 100x22 mm  
 for Convection oven electric (BEST FOR)  
 BISTROT1064 - BISTROT1065 - GOURMET1021



BEST FOR 373500040

**5057779 HEATING ELEMENT 5000W 230V**  
 external  $\varnothing$  228 mm - overall height 130 mm  
 flange 142x25 mm  
 for Convection oven electric (BEST FOR) BISTROT665  
 GOURMET1011 - GOURMET511



BEST FOR 373500050

**3755319 HEATING ELEMENT 9000W 220V**  
 external  $\varnothing$  330 mm - internal  $\varnothing$  315 mm  
 overall height 175 mm - flange 140x25 mm



BEST FOR 373500014

BEST FOR 373500015





## Hinges, catches and accessories

**5048006 DOOR HINGE ROLL HOLDER**

mounting distance 95 mm - overall length 110 mm  
height 22 mm  
for Convection oven electric (BEST FOR)  
BISTROT364/05 - BISTROT434 - BISTROT434/05  
BISTROT464 - BISTROT464/05



BEST FOR 366400005

**5048008 RIGHT-LEFT HINGE FOR OVEN**

mounting distance 133 mm - overall length 155 mm  
height 146 mm  
for Convection oven electric (BEST FOR)  
BISTROT464/05



BEST FOR 311000006

**5048006 DOOR HINGE ROLL HOLDER**

mounting distance 95 mm - overall length 110 mm  
height 22 mm  
for Convection oven electric (BEST FOR)  
BISTROT364/05 - BISTROT434 - BISTROT434/05  
BISTROT464 - BISTROT464/05



BEST FOR 366400005

**3053281 RIGHT/LEFT HINGE FOR OVEN**

mounting distance 130 mm - overall length 155 mm  
height 147 mm  
for Convection oven electric (BEST FOR)  
BISTROT434 - BISTROT434/05 - BISTROT464



BEST FOR 311000005

## Hydraulic piping

**5064966 TUBE POLYETHYLENE  $\varnothing$  6/8 mm 1000 mm**

for Convection oven (BEST FOR)



BEST FOR 385500020



Suitable for:

## BEST FOR



Suitable for:

### Incandescent lamps and neon lamps

**3221616 NEUTRAL HALOGEN LAMP G4 20W 24V**  
dimensions  $\varnothing$  9x33 mm



BEST FOR 146600003

### Labels for control panels

**3399014 BLACK ELECTRONIC PLATE 10 PROGRAMS**  
dimensions 300x100 mm - adhesive



BEST FOR 382000012

### Lamp receptacles and spare parts

**3221318 CERAMIC LAMP RECEPTACLE E27**



BEST FOR 166400006

**3221615 HALOGEN LAMP RECEPTACLE G4 20W 12/24V**  
wire connection length 110 mm



BEST FOR 166400002

**3221350 LAMP RECEPTACLE WITH LAMP E14 15W 230V**  
lamp glass  $\varnothing$  42 mm  
mounting hole  $\varnothing$  38 mm  
max temperature 300°C



BEST FOR 166400007

### Microswitches

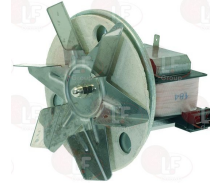
**3240410 MICROSWITCH 16(4)A 250V**



BEST FOR 151600000

**Motors****3240338 MOTOR INSULATOR KIT**

BEST FOR 743600001

**5034179 MOTOR WITH FAN 53W 220/240V 50/60Hz**  
fan  $\varnothing$  150 mm  
for Convection oven electric (BEST FOR)  
BISTROT434/05 - 434

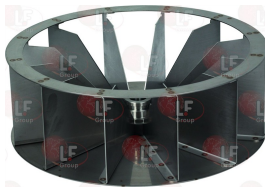
BEST FOR 353000023

**3240328 MOTOR 1088.4354 0.5HP 220/380V 50/60Hz**  
1.3/2.3A - 1400/1600rpm

BEST FOR 353000010

**3240336 FAN  $\varnothing$  300 mm**  
thickness 80 mm  
total straight blades 12 - hole  $\varnothing$  22 mm

BEST FOR 591500007

**5058595 FAN  $\varnothing$  300 mm**  
thickness 105 mm  
number of blades 12 - conical hole  $\varnothing$  20-22 mm

BEST FOR 591500009

**3240335 FAN GRILL  $\varnothing$  325 mm**

BEST FOR 331605000

BEST FOR 331606501

**3240330 FIXING SCREW FOR FAN M12x1.5 LEFTHAND**

BEST FOR 393000001

**3240338 MOTOR INSULATOR KIT**

BEST FOR 743600001



Suitable for:

## BEST FOR



**5059971 MOTOR 3003A2454 0.12/0.18Kw 220/240V**  
 50/60Hz 0.8A 2750/3300rpm - capacitor 5 µF  
 for Convection oven electric (BEST FOR)  
 BISTROT1064 - BISTROT1065 - BISTROT364/05  
 BISTROT364/12 - BISTROT433 - BISTROT434/12  
 BISTROT464/12 - BISTROT664 - BISTROT665  
 GOURMET1011 - GOURMET1021 - GOURMET511  
 GOURMET523



BEST FOR 353000024

BEST FOR 353000030

BEST FOR 353000035

BEST FOR 753000035

**5034182 FAN ø 200 mm**  
 thickness 61 mm  
 blades number 45 - hole ø 8 mm  
 for Convection oven electric (BEST FOR)  
 BISTROT1064 - BISTROT364/05 - BISTROT664



BEST FOR 391500011

BEST FOR 391500016

## Penetration probes

**5056467 PENETRATION PROBE PT100**  
 2 wires - with fixing fitting M10  
 probe length 108 mm  
 cable length 2800 mm  
 for Convection oven electric (BEST FOR)  
 BISTROT1065 - BISTROT433 - BISTROT446  
 BISTROT465 - BISTROT665 - GOURMET1011  
 GOURMET1021 - GOURMET511 - GOURMET523 - RACK



BEST FOR 179607120

BEST FOR 179607530

## Potentiometers

**5051493 POTENTIOMETER**  
 D-shaped pin ø 6x4.6 mm  
 for Convection oven (BEST FOR)



BEST FOR 175006000



## Probes

**5038411 PROBE HUMIDITY**  
 2 wires  
 probe dimensions  $\varnothing$  17x72 mm  
 cable length 3010 mm



BEST FOR 179600007

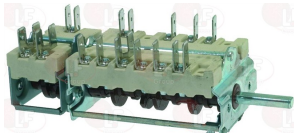
**3397093 PROBE THERMOCOUPLE TCJ**  
 twin wire - temperature 0-250°C  
 probe length 100 mm  
 cable length 950 mm  
 for Convection oven (BEST FOR) BISTROT1064  
 BISTROT1065 - BISTROT433 - BISTROT446  
 BISTROT465 - BISTROT664 - BISTROT665  
 GOURMET1011 - GOURMET1021 - GOURMET511  
 GOURMET523 - GOURMET711 - RACK



BEST FOR 179600000

## Rotary switches

**3057214 SELECTOR SWITCH 0-3 POSITIONS**  
 contact capacity 32A 250V - max 150°C  
 D-shaped pin  $\varnothing$  6x4.6 mm



BEST FOR

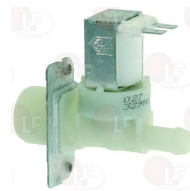
## Solenoid valves

**3120037 ADJUSTER FOR OUTLET ELBI GREEN**  
 flow rate 0.25 L/min - tolerance +/- 25%



BEST FOR 374000008

**3120005 SOLEN. VALVE ELBI TYPE 329 1 WAY 180°**  
 220/240V 50/60Hz - max. temperature 90°C  
 inlet 3/4" - outlet  $\varnothing$  10.5 mm



BEST FOR 120800009

**3120505 SOLEN. VALVE ELBI TYPE 329 1 WAY 180°**  
 24V 50/60Hz - max. temperature 90°C  
 inlet 3/4" - outlet  $\varnothing$  10.5 mm



BEST FOR 120800005

**3120550 SOLENOID VALVE INVENSYS 1 WAY 180°**  
 240V 50/60Hz 6W - max. temperature 90°C  
 inlet 3/4" - outlet  $\varnothing$  10.5 mm



BEST FOR



Suitable for:

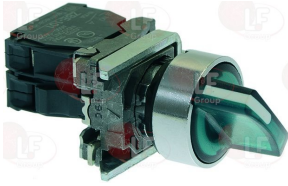
# BEST FOR

Suitable for:



## Switches

**3319324 COMPLETE GREEN SWITCH 8A 240V**  
with indicator lamp 24V  
mounting hole  $\varnothing$  22 mm



BEST FOR 13700004

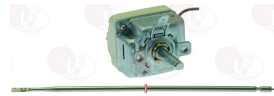
## Thermostats

**3444676 SINGLE-PHASE THERMOSTAT 335°C**  
with manual reset  
covered capillary length 920 mm - 16A 250V  
bulb  $\varnothing$  3x150 mm  
for Convection oven electric (BEST FOR)  
BISTROT1064 - BISTROT1065 - BISTROT364/05  
BISTROT364/12 - BISTROT433 - BISTROT434  
BISTROT434/05 - BISTROT434/12 - BISTROT446  
BISTROT464 - BISTROT464/05 - BISTROT464/12  
BISTROT465 - BISTROT664 - BISTROT665  
CHEF6TEGLIE - GOURMET1011 - GOURMET1021  
GOURMET511 - GOURMET523 - GOURMET711 - RACK



BEST FOR 182500029

**3444337 SINGLE-PHASE THERMOSTAT 45-260°C**  
D-shaped pin  $\varnothing$  6x4.6 mm  
covered capillary length 900 mm - 16A 250V  
bulb  $\varnothing$  3x226 mm  
for Convection oven (BEST FOR)



BEST FOR 182500060

**3444043 SINGLE-PHASE THERMOSTAT 50-270°C**  
D-shaped pin  $\varnothing$  6x4.6 mm  
covered capillary length 1300 mm - 16A 250V  
bulb  $\varnothing$  3x220 mm  
for Convection oven (BEST FOR)



BEST FOR

**3444025 THREE-PHASE THERMOSTAT 350°C**  
with manual reset  
capillary length 1200 mm - 10A 400V  
bulb  $\varnothing$  6x160 mm



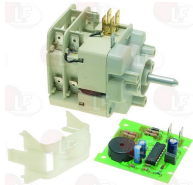
BEST FOR 182500021

BEST FOR 182500022



## Timers

**5052893 TIMER KIT 120 MINUTES MS65**  
 with board  
 manually set mechanical timer  
 120 minutes manually set cycle  
 contact capacity 16(4)A 250V  
 max temperature 100°C  
 D-shaped pin  $\varnothing$  6x4.6 mm  
 for Convection oven electric (BEST FOR)  
 BISTROT1064 - BISTROT464 - BISTROT664  
 CHEF6TEGLIE - GOURMET711



BEST FOR 183000010

BEST FOR 183000015

**5061477 TIMER 60 MINUTE C20**  
 mechanical timer with buzzer  
 mechanical timer with manual reset  
 60 minute manual reset cycle  
 contact capacity 16(4)A 230V  
 max. temperature 125°C  
 D-shaped pin  $\varnothing$  6x4.6 mm  
 for Convection oven electric (BEST FOR) BISTROT464  
 434



BEST FOR 113000005

**5044982 TIMER 60 SECONDS 24/110/240V**  
 for Convection oven electric (BEST FOR)  
 MISTRAL10TTR - MISTRAL5TTR - MISTRAL6TTR



BEST FOR 183000006

## Transformers

**3739001 TRANSFORMER 0-230-400V/0-12-24V 75VA**  
 primary voltage 0-230-400V 50/60Hz  
 secondary voltage 0-12-24V 75VA  
 room temperature 0÷40°C  
 screw terminal box



BEST FOR 184500006

## Wash arms for ovens

**5059500 OVEN WASH ARM 160 mm**  
 complete with nozzles  
 for Convection oven electric (BEST FOR)  
 Series STAR BISTROT/GOURMET




















BEST FOR 764107050

*The data herewith contained may change without notice and LF SpA cannot be held responsible for possible errors stated or resulting by the use of this document. All rights reserved. No part of this publication may be reproduced without written permission by LF SpA.*



## Distributing Components, Spare Parts & Accessories in original quality worldwide

---

-  **LF SpA HEADQUARTERS**  
via Voltri, 80 - 47522 Cesena (FC) ITALY  
Tel. +39 0547 34 11 11 - Fax +39 0547 34 11 10  
[www.lfircambi724.it](http://www.lfircambi724.it) - [www.lfircambi724.mobi](http://www.lfircambi724.mobi)  
[info@lfircambi.it](mailto:info@lfircambi.it)  
Export Dept.: Tel. +39 0547 34 11 50 - Fax: +39 0547 34 11 55  
[www.lfspareparts724.com](http://www.lfspareparts724.com) - [www.lfspareparts724.mobi](http://www.lfspareparts724.mobi)  
[export@lfspareparts.com](mailto:export@lfspareparts.com)
-  **LF SpA HOUSEHOLD COMPONENTS DIVISION**  
Via Padriciano, 34149 Trieste - Italia - AREA Science Park  
Tel. +39 0547 34 12 42 - Fax +39 0547 34 12 48  
[www.lfspareparts724.com](http://www.lfspareparts724.com) - [www.lfspareparts724.mobi](http://www.lfspareparts724.mobi)  
[info@lfspareparts.com](mailto:info@lfspareparts.com)
-  **EPGC Sas FRANCE**  
13, Rue des Forts - 59960 Neuville en Ferrain  
Tel. +33 (0)3 20 25 06 21  
Fax +33 (0)3 20 25 34 12  
[www.epgc.com](http://www.epgc.com)  
[www.epgc724.mobi](http://www.epgc724.mobi)  
[epgc@epgc.com](mailto:epgc@epgc.com)
-  **LF GmbH GERMANY**  
Junkersstrasse, 3 - D-82178 Puchheim - München  
Tel. +49 89 89 45 78 66  
Fax +49 89 89 45 78 88  
[www.lfersatzteile724.de](http://www.lfersatzteile724.de)  
[www.lfersatzteile724.mobi](http://www.lfersatzteile724.mobi)  
[info@lfersatzteile.de](mailto:info@lfersatzteile.de)
-  **LF China REPUBLIC OF CHINA**  
Room 403, No.2, Huadu Mansion, Lane 422, Huanghua Rd.  
Minhang Dist. - 201103 Shanghai  
Tel. +86 (0)21 33 53 66 31  
Fax +86 (0)21 33 53 66 32  
[www.lfspareparts724.com](http://www.lfspareparts724.com)  
[www.lfspareparts724.mobi](http://www.lfspareparts724.mobi)  
[china@lfspareparts.com](mailto:china@lfspareparts.com)
-  **OOO LF RUSSIAN FEDERATION**  
Ul. Anatoliya Zhivova, 8 - office 1 - 123100 Moscow  
Tel./Fax +7 495 725 26 53  
[www.lfspareparts724.ru](http://www.lfspareparts724.ru)  
[www.lfspareparts724.mobi](http://www.lfspareparts724.mobi)  
[info@lfspareparts.ru](mailto:info@lfspareparts.ru)
-  **LF Repuestos Horeca S.L.U. SPAIN**  
Poligono Industrial Carpetania - C/Miguel Faraday, 8 - 28906 Getafe  
Tel. +34 91 477 91 00  
Fax +34 91 477 90 81  
[www.lfrepuestos-horeca724.es](http://www.lfrepuestos-horeca724.es)  
[www.lfrepuestos724.mobi](http://www.lfrepuestos724.mobi)  
[info@lfrepuestos.es](mailto:info@lfrepuestos.es)
-  **LF SpA Cesena (IT) Swiss Branch Steinhausen SWITZERLAND**  
Sennweidstrasse, 45 - CH-6312 Steinhausen  
Tel. +41 (0)41 760 15 80-1  
Fax +41 (0)41 760 15 85  
[www.lfersatzteile724.ch](http://www.lfersatzteile724.ch)  
[www.lfersatzteilech724.mobi](http://www.lfersatzteilech724.mobi)  
[info@lfersatzteile.ch](mailto:info@lfersatzteile.ch)
-  **LF Spare Parts Ltd. UNITED KINGDOM**  
A10a Lakeside Business Park, Broadway Lane  
South Cerney, Gloucestershire GL7 5XL  
Tel. +44 (0)1285 86 16 25  
Fax +44 (0)1285 86 39 49  
[www.lfspareparts724.co.uk](http://www.lfspareparts724.co.uk)  
[www.lfspareparts724.mobi](http://www.lfspareparts724.mobi)  
[info@lfspareparts.co.uk](mailto:info@lfspareparts.co.uk)
-  **AUSTRALIA AND NEW ZEALAND**  
[www.lfspareparts724.com](http://www.lfspareparts724.com)  
[andrea.calvio@lfspareparts.com](mailto:andrea.calvio@lfspareparts.com)
-  **AUSTRIA**  
[www.lfersatzteile724.at](http://www.lfersatzteile724.at)  
[info@lfersatzteile.at](mailto:info@lfersatzteile.at)
-  **BALKAN COUNTRIES**  
[www.lfspareparts724.com](http://www.lfspareparts724.com)  
[matijaramov@lfspareparts.com](mailto:matijaramov@lfspareparts.com)
-  **BALTIC COUNTRIES**  
[www.lfspareparts724.com](http://www.lfspareparts724.com)  
[inara.silina@lfspareparts.com](mailto:inara.silina@lfspareparts.com)
-  **CENTRAL AND EASTERN EUROPE**  
[www.lfspareparts724.cz](http://www.lfspareparts724.cz)  
[jiri.kremla@lfspareparts.cz](mailto:jiri.kremla@lfspareparts.cz)
-  **DENMARK**  
[www.lfspareparts724.dk](http://www.lfspareparts724.dk)  
[michael.leth@lfspareparts.com](mailto:michael.leth@lfspareparts.com)
-  **JAPAN**  
[www.lfspareparts724.jp](http://www.lfspareparts724.jp)  
[hiroshi.ukai@lfspareparts.jp](mailto:hiroshi.ukai@lfspareparts.jp)
-  **SOUTH KOREA**  
[www.lfspareparts724.com](http://www.lfspareparts724.com)  
[fabio.doni@lfspareparts.com](mailto:fabio.doni@lfspareparts.com)
-  **TURKEY**  
[www.lfyedekparca724.com](http://www.lfyedekparca724.com)  
[basar.ergun@lfyedekparca.com](mailto:basar.ergun@lfyedekparca.com)
-  **USA AND CANADA**  
[www.lfspareparts724.us](http://www.lfspareparts724.us)  
[sauro.dallaglio@lfspareparts.us](mailto:sauro.dallaglio@lfspareparts.us)  
[howard.truitt@lfspareparts.us](mailto:howard.truitt@lfspareparts.us)