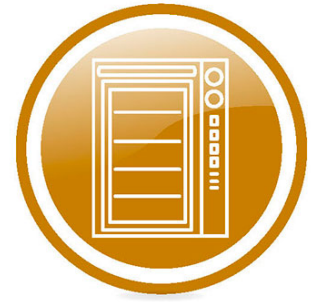




Spare parts for:

Ovens



Suitable for:

COVEN



This catalogue is automatically generated.
Therefore, the sequence of the items might
not be always shown at best.

Updates will be issued in case of additions
and/or amendments.

*Suitable **universal spare parts** may not be included*





Suitable for:

COVEN



Suitable for:

Axial motors

3240337 AXIAL VENTILATOR SUNON 80x80x38 mm
 ball bearings
 230V 50/60Hz 18W 2400rpm
 SF23080A-2083HBL.GN



COVEN EMMOAS6

Boilers

3048001 STEAM BOILER 2kW
 with probe and safety thermostat
 for Convection oven electric (COVEN) TEC10MX
 TEC3MX - TEC4MX - TEC6MX
 for Convection oven gas (COVEN) TEC6GMX



COVEN EMGBVKW2

COVEN EMGBVKW2+EMSOLVX4

3048002 STEAM BOILER 3Kw 220V
 with bracket and safety thermostat
 for Convection oven electric (COVEN) TEC10MX
 TEC4MX - TEC6MX
 for Convection oven gas (COVEN) TEC6GMX



COVEN EMGCBKW3

COVEN EMGBVKW3

COVEN EMGBVKW3+EMSOLVX4

Buzzers

3397022 ALARM WITH CARD
 dimensions 32x52 mm
 for OVEN ALL MODELS
 for Convection oven (COVEN)



COVEN EMFTES07



Contactors

3351049 CONTACTOR SIEMENS 3RT2016-1AP01

9A 400V 4Kw - coil 230V 50/60Hz
3 normally open contacts
1 normally open auxiliary contact



COVEN EMCN1H25

3454006 CONTACTOR SIEMENS 3RT2016-1AP02

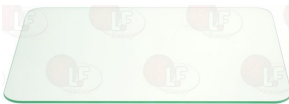
9A 400V 4Kw - coil 230V 50/60Hz
3 normally open contacts
1 normally closed auxiliary contact
for Convection oven electric (COVEN) N5PMEC
TEC10 - TEC10MD - TEC10MX - TEC10P - TEC15
TEC15MX - TEC20 - TEC20MD - TEC3MD - TEC3MX
TEC4MX - TEC4P - TEC5P - TEC6 - TEC6MD
TEC6MX - TEC7
for Convection oven gas (COVEN) TEC15GMD



COVEN EMCNAH25

Door glasses for oven and accessories

5029596 GLASS EXTERNAL OVEN DOOR 500x370 mm for Convection oven (COVEN)



COVEN MCVE0005

Drain pumps

3122327 DRAIN ELECTRIC PUMP 40W 240V 50Hz inlet external \varnothing 24 mm - output external \varnothing 23 mm for Convection oven (COVEN) TEC10MX-TEC4MX-TEC6MX-10EMX-6EMX for Convection oven gas (COVEN) TEC6GMX-6GMX



COVEN MCPOMPAMX



Suitable for:

COVEN

Suitable for:



Electronic boxes

- 3091014 CONTROL BOX CM11**
 model BRAHMA - 230V 50/60Hz 7VA
 for Convection oven gas (COVEN) N6GMD - N6GMX
 TEC10G - TEC10GMD - TEC10GP - TEC10GPMEC
 TEC15G - TEC15GMD - TEC20G - TEC20GMD - TEC5GP
 TEC5GPMEC - TEC6G - TEC6GMD - TEC6GMX - TEC7G



COVEN EMCOFIN6G

Electronic controllers

- 3445020 THERMOSTAT TLK38 TCJ/TCK/PT100**
 power supply 12V
 thermostat setting range -200+1370°C
 ON-OFF control with two actuation points
 2 exchange relay outputs 8(3)A 250V
 room temperature 0+50°C
 probe type TCJ-TCK-PT100 (not included)
 connections by screwed terminal block
 front dimensions 75x33x64 mm
 mounting hole 71x29 mm
 for Convection oven (COVEN)



COVEN EMRESC04

Electronic printed-circuit boards

- 5027986 PC BOARD AUTOREVERSE 141x63 mm**
 for Convection oven (COVEN) N5PMEC - TEC10GP
 TEC10GPMEC - TEC10P - TEC10PMEC - TEC5GP
 TEC5GPMEC - TEC5PMEC
 for Convection oven (COVEN) TEC5P



COVEN ELSCAR5P



Energy regulators

3350026 ENERGY ADJUSTER

contact capacity 230V 13A - max temperature 125°C
D-shaped pin \varnothing 6x4.6 mm
double rotation direction
for PYROCERAM. TOPS-SALAMANDERS-POTATO WARMERS

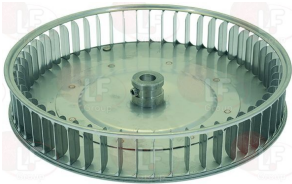


COVEN EMPUAH00

Fans for motors

3340073 FAN \varnothing 240 mm

thickness 43 mm
total blades 55 - \varnothing hole 13 mm
for Convection oven gas (COVEN) C6G - TEC6G
TEC6GMD - TEC6GMX - 6GMD - 6GMX



COVEN MCCVE2406G

COVEN MCVN0250

Gas burners

5051606 BURNER \varnothing 50x578 mm

overall length 585 mm
made of stainless steel
for Convection oven gas (COVEN) C6G - TEC10G
TEC6G



COVEN EMBR0006



Suitable for:

COVEN

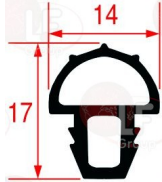
Suitable for:



Gaskets for oven door

3786513 GASKET OVEN DOOR

made of silicone elastomer
profile dimensions 17x14 mm
COLOUR: RED
SOLD BY METER
for Convection oven electric (COVEN) N5PMEC - TEC3
TEC3MD - TEC3MX - TEC4P



COVEN MCGP34P

3286052 OVEN DOOR GASKET - 15 m

made of silicone elastomer
profile dimensions 25x22 mm
COLOUR BLACK
for Convection oven electric (COVEN) TEC10MD
TEC10MX - TEC10NMD - TEC10NMX - TEC15
TEC15MD - TEC20 - TEC20MD - TEC3MD - TEC3MX
TEC4MX - TEC5P - TEC6 - TEC7
for Convection oven gas (COVEN) TEC10G - TEC15G
TEC15GMD - TEC20G - TEC20GMD - TEC5GP - TEC7G



COVEN MCGPN004

3286051 OVEN DOOR GASKET - 3 m

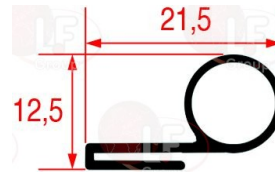
made of silicone elastomer
profile dimensions 25x22 mm
COLOUR BLACK
for Convection oven electric (COVEN) TEC10MD
TEC10MX - TEC10NMD - TEC10NMX - TEC15
TEC15MD - TEC15MX - TEC20 - TEC20MD - TEC3MX
TEC4MX - TEC5P - TEC6 - TEC7
for Convection oven gas (COVEN) TEC10G - TEC15G
TEC15GMD - TEC20G - TEC20GMD - TEC5GP - TEC7G



COVEN MCGPN004

3286034 OVEN DOOR GASKET 2514 - 25 m

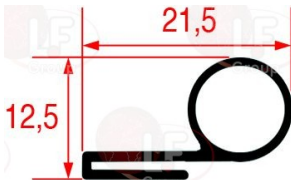
made of silicone elastomer
profile dimensions 21.5x12.5 mm
COLOUR BLACK
for Convection oven electric (COVEN) TEC10
TEC10MX - TEC2 - TEC3 - TEC4MX - TEC4P
for Convection oven gas (COVEN) TEC6G - TEC6GMX
TEC7G - TEC7GP



COVEN MCGP0002

3286086 OVEN DOOR GASKET 2514 - 3 m

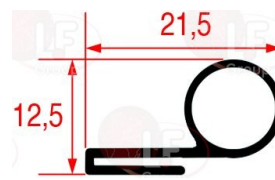
made of silicone elastomer
profile dimensions 21.5x12.5 mm
COLOUR BLACK
for Convection oven electric (COVEN) TEC10
TEC10MX - TEC2 - TEC3 - TEC4MX - TEC4P
for Convection oven gas (COVEN) TEC6G - TEC6GMX
TEC7G - TEC7GP



COVEN MCGP0002

3286033 OVEN DOOR GASKET 2514 - 6 m

made of silicone elastomer
profile dimensions 21.5x12.5 mm
COLOUR BLACK
for Convection oven electric (COVEN) TEC10
TEC10MX - TEC2 - TEC3 - TEC4MX - TEC4P
for Convection oven gas (COVEN) TEC6G - TEC6GMX
TEC7G - TEC7GP



COVEN MCGP0002



Suitable for:

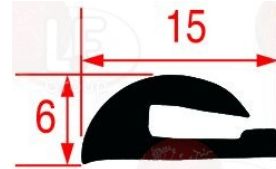
3786618 OVEN DOOR GASKET 3000 mm
 made of silicone elastomer
 profile dimensions 30x10 mm
 COLOUR BLACK
 for Convection oven electric (COVEN) N5P - N5PMEC
 N6MD - N6MX - 10EMD - 10EMX - 6CE - 6EMD
 6EMX
 for Convection oven gas (COVEN) N6GMD - N6GMX
 10GMD - 6CG - 6GMD - 6GMX



COVEN MCGFC06N

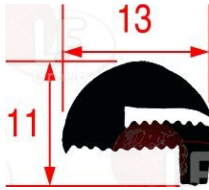
Suitable for:

3786324 OVEN GLASS GASKET 1300 mm
 made of silicone elastomer
 profile dimensions 15x6 mm
 COLOUR BLACK
 for Convection oven electric (COVEN) TEC2 - TEC3
 TEC4P



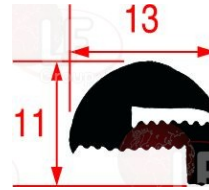
COVEN MCGV0003

3786179 OVEN GLASS GASKET 3500 mm
 made of silicone elastomer
 profile dimensions 13x11 mm
 COLOUR BLACK
 for Convection oven (COVEN) - Series TEC5
 Series TEC6
 for Convection oven electric (COVEN) TEC3MD
 TEC3MX - TEC7



COVEN MCGV0002

3786171 OVEN GLASS GASKET 7000 mm
 made of silicone elastomer
 profile dimensions 13x11 mm
 COLOUR BLACK
 for Convection oven (COVEN) - Series TEC15
 Series TEC20
 for Convection oven electric (COVEN) TEC10
 for Convection oven gas (COVEN) TEC10G - TEC10GMD



COVEN MCGV0002

Guides

5032454 PAIR OF SLIDEWAYS FOR GRID
 overall length 320 mm - width 16 mm
 overall height 19 mm
 for Convection oven (COVEN)



COVEN CAGUID45



Suitable for:

COVEN



Suitable for:

Handles

3242255 CENTRAL LOCK MECHANISM RIGHT

for OVEN

for Convection oven electric (COVEN) TEC10

TEC10MD - TEC10MX - TEC10P - TEC15 - TEC15MD

TEC15MX - TEC20 - TEC20MD

for Convection oven gas (COVEN) TEC10G - TEC10GMD

TEC10GP - TEC15G - TEC15GMD - TEC20G

TEC20GMD



COVEN MCCHMC10

3242110 COMPLETE OVEN DOOR HANDLE

for Convection oven electric (COVEN) N5P - N5PMEC

N6MD - N6MX - TEC3MD - TEC3MX - TEC4MX - TEC5P

TEC5PMEC - TEC6 - TEC6EMD - TEC6EMX - TEC6MD

TEC6MX - TEC7

for Convection oven gas (COVEN) N6GMD - TEC5GP

TEC5GPMEC - TEC6G - TEC6GMD - TEC6GMX - TEC7G



COVEN MCCHSAMX

3242409 LATCH DOUBLE FOR DOOR HANDLE M8

overall length 51.5 mm



COVEN MCPR2AMX

3242292 DOOR LOCKING MECHANISM

for OVEN



COVEN

3242111 STRIKE FOR DOOR HANDLE M8

overall length 50.5 mm

for Convection oven electric (COVEN) N6MD - N6MX

TEC3MD - TEC3MX - TEC4MX - TEC5P - TEC6

TEC6MD - TEC6MX - TEC7

for Convection oven gas (COVEN) N6GMD - N6GMX

TEC5GP - TEC6G - TEC6GMD - TEC6GMX - TEC7G



COVEN MCCHAGMX



3242422 COMPLETE OVEN DOOR HANDLE
 for Convection oven electric (COVEN) TEC10
 TEC10MD - TEC10MX - TEC10P - TEC10PMEC - TEC15
 TEC15MD - TEC15MX - TEC20 - TEC20MD - 10EMD
 10EMX
 for Convection oven gas (COVEN) TEC10G - TEC10GMD
 TEC10GP - TEC10GPMEC - TEC15G - TEC15GMD
 TEC20G - TEC20GMD - 10GMD



COVEN MCCHSA10

3242183 OVEN HANDLE TOP/BOT.TIE ROD 146 mm
 for Convection oven electric (COVEN) TEC10
 TEC10MD - TEC10MX - TEC10P - TEC15 - TEC15MD
 TEC15MX - TEC20 - TEC20MD
 for Convection oven gas (COVEN) TEC10G - TEC10GMD
 TEC10GP - TEC15G - TEC15GMD - TEC20G
 TEC20GMD



COVEN MCCHME10

3242718 DOOR HANDLE STRIKE
 for high temperatures
 mounting distance 43 mm
 for OVEN



COVEN MCCHNA04

3242409 LATCH DOUBLE FOR DOOR HANDLE M8
 overall length 51.5 mm



COVEN MCP2AMX

Suitable for:

3242255 CENTRAL LOCK MECHANISM RIGHT
 for OVEN
 for Convection oven electric (COVEN) TEC10
 TEC10MD - TEC10MX - TEC10P - TEC15 - TEC15MD
 TEC15MX - TEC20 - TEC20MD
 for Convection oven gas (COVEN) TEC10G - TEC10GMD
 TEC10GP - TEC15G - TEC15GMD - TEC20G
 TEC20GMD



COVEN MCCHMC10

3242685 STRIKE FOR DOOR HANDLE
 distance between holes 20 mm
 for Convection oven electric (COVEN) TEC10
 TEC10GMD - TEC10MD - TEC10MX - TEC10P - TEC15
 TEC15MD - TEC15MX - TEC20 - TEC20GMD - TEC20MD
 for Convection oven gas (COVEN) TEC10G - TEC10GP
 TEC15G - TEC15GMD - TEC20G



COVEN COC10278

3242292 DOOR LOCKING MECHANISM
 for OVEN



COVEN

3398021 OVEN DOOR CATCH
 distance between holes 47 mm
 catch distance 27 mm
 for Convection oven (COVEN) - Series TEC5 - TEC8
 TEC9P
 for Convection oven electric (COVEN) TEC10MX
 TEC4MX
 for Convection oven gas (COVEN) TEC6G - TEC7G



COVEN MCCHPI00



Suitable for:

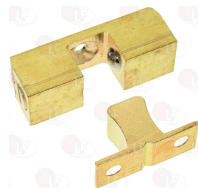
COVEN



Suitable for:

3398079 OVEN DOOR CATCH

for Convection oven electric (COVEN) TEC2 - TEC3
TEC3H - TEC4P



COVEN MCCH002

3242144 OVEN DOOR HANDLE 260x30 mm

with strike mounting distance 45 mm
handle mounting distance 133 mm
for Convection oven electric (COVEN) TEC3MD
TEC3MX - TEC4MX - TEC4P - TEC5P - TEC5PMEC
TEC6 - TEC6H - TEC6MD - TEC6MX - TEC7
for Convection oven gas (COVEN) TEC5GP - TEC5GPMEC
TEC6G - TEC6GMD - TEC6GMX - TEC7G



COVEN MCCHIN04

3242718 DOOR HANDLE STRIKE

for high temperatures
mounting distance 43 mm
for OVEN



COVEN MCCHNA04

3242183 OVEN HANDLE TOP/BOT.TIE ROD 146 mm

for Convection oven electric (COVEN) TEC10
TEC10MD - TEC10MX - TEC10P - TEC15 - TEC15MD
TEC15MX - TEC20 - TEC20MD
for Convection oven gas (COVEN) TEC10G - TEC10GMD
TEC10GP - TEC15G - TEC15GMD - TEC20G
TEC20GMD



COVEN MCCHME10

3242685 STRIKE FOR DOOR HANDLE

distance between holes 20 mm
for Convection oven electric (COVEN) TEC10
TEC10GMD - TEC10MD - TEC10MX - TEC10P - TEC15
TEC15MD - TEC15MX - TEC20 - TEC20GMD - TEC20MD
for Convection oven gas (COVEN) TEC10G - TEC10GP
TEC15G - TEC15GMD - TEC20G



COVEN COC10278

3242111 STRIKE FOR DOOR HANDLE M8

overall length 50.5 mm
for Convection oven electric (COVEN) N6MD - N6MX
TEC3MD - TEC3MX - TEC4MX - TEC5P - TEC6
TEC6MD - TEC6MX - TEC7
for Convection oven gas (COVEN) N6GMD - N6GMX
TEC5GP - TEC6G - TEC6GMD - TEC6GMX - TEC7G

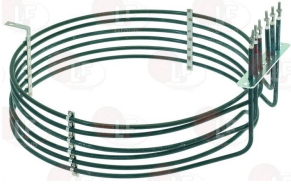


COVEN MCCHAGMX



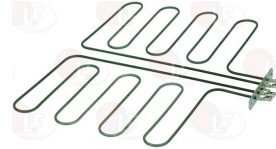
Heating elements

3755264 HEATING ELEMENT 10000W 240V
 external \varnothing 355 mm - overall height 177 mm
 flange 140x25 mm
 for Convection oven electric (COVEN) TEC10P
 TEC10PMEC - TEC15 - TEC15MD - TEC15MX - TEC20
 TEC20MD - TEC5P - TEC5PMEC - TEC7



COVEN EMR10000

3455366 HEATING ELEMENT 2500W 240V
 length 350 mm - width 405 mm
 flange 100x22 mm
 for Proving oven electric (COVEN) LIEVITATORE10
 LIEVITATORE8



COVEN EMRSA025

3755265 HEATING ELEMENT 3000W 240V
 external \varnothing 190 mm - total height 75 mm
 flange 100x22 mm
 for Convection oven electric (COVEN) TEC10
 TEC10MX - TEC3 - TEC3H - TEC3MX - TEC4MX
 TEC4P - TEC6 - TEC6MX



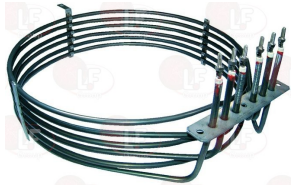
COVEN EMRSB030

5040429 HEATING ELEMENT 3300W 230V
 external \varnothing 190 mm - overall height 70 mm
 flange 100x22 mm
 for Convection oven electric (COVEN) TEC10MD
 TEC3MD - TEC6MD
 for Convection oven electric (COVEN) 6EMD



COVEN EMRSB033

3455326 HEATING ELEMENT 7500W 230V
 external \varnothing 310 mm - internal \varnothing 295 mm
 flange 142x25 mm
 for Convection oven electric (COVEN) N5P - N5PMEC
 N6MD - N6MX



COVEN EMRSN675

Incandescent lamps and neon lamps

5049560 NEUTRAL HALOGEN LAMP G9 25W 240V
 temperatura massima 250°C



COVEN EMPLAL25

3221041 OVEN LAMP E14 15W 230V
 max temperature 300°C
 for OVEN - PIZZA OVEN



COVEN EMPLLAHO



Suitable for:

COVEN



Suitable for:

3221061 OVEN LAMP E14 25W 230V
max temperature 300°C
for OVEN - PIZZA OVEN



COVEN EMPLL025

Indicator lights

3221085 INDICATOR LAMP GREEN 230V
ø head 18 mm - ø hole 12 mm - 120°C



COVEN EMLSAHRO

Knobs

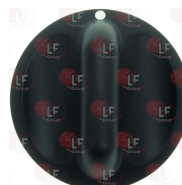
3241736 BLACK KNOB ø 36 mm
round hole ø 6 mm
for thermostat and selector switch
for Convection oven (COVEN)



COVEN MCMAT10N

COVEN MCMAT10N+MCCAT10N

3241277 BLACK KNOB ø 48 mm
D-shaped hole 6x4.6 mm
for Convection oven (COVEN)



COVEN MCMA0M0T

Lamp receptacles and spare parts

3221172 FRAME FOR OVEN LAMP RECEPTACLE
external dimensions 96x80 mm



COVEN EMPLQU25B

3221233 GLASS FOR OVEN LAMP RECEPTACLE ø 42 mm
thread ø 33 mm - overall height 26 mm
for Convection oven (COVEN)



COVEN EMPLG042



Suitable for:

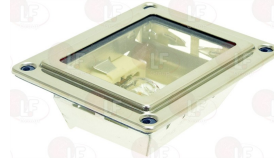
3221232 GLASS FOR OVEN LAMP RECEPTACLE \varnothing 53 mm
 thread \varnothing 33 mm - overall height 32 mm
 for Convection oven (COVEN)



COVEN EMPLG800

Suitable for:

3221268 LAMP RECEPTACLE W/LAMP G9 25W 240V
 external dimensions 96x80 mm
 max temperature 300°C
 for Convection oven electric (COVEN) TEC10MD
 TEC10MX - TEC10P - TEC10PMEC - TEC15 - TEC15MD
 TEC15MX - TEC20 - TEC20MD - TEC6MX
 for Convection oven gas (COVEN) TEC10G - TEC10GMD
 TEC10GP - TEC10GPMEC - TEC15G - TEC15GMD
 TEC20G - TEC20GMD



COVEN EMPLQU25

3221062 LAMP RECEPTACLE WITH LAMP E14 15W 230V
 lamp glass \varnothing 57 mm
 mounting hole \varnothing 42 mm
 max temperature 300°C
 for OVEN
 for Convection oven electric (COVEN) TEC10 - TEC2
 TEC3 - TEC4P - TEC6 - TEC7
 for Convection oven gas (COVEN) TEC6G - TEC7G



COVEN EMPLP042

3221060 LAMP RECEPTACLE WITH LAMP E14 25W 230V
 lamp glass \varnothing 42 mm
 mounting hole \varnothing 38 mm
 max temperature 300°C
 for OVEN



COVEN EMPLP042

3221231 LAMP RECEPTACLE WITH LAMP G9 25W 240V
 lamp glass \varnothing 53 mm
 mounting hole \varnothing 40 mm
 max temperature 300°C
 for Convection oven electric (COVEN) N5P - TEC10MD
 TEC10MX - TEC3MD - TEC3MX - TEC4MX - TEC5P
 TEC6MD - TEC6MX
 for Convection oven gas (COVEN) TEC5GP - TEC6GMD
 TEC6GMX



COVEN EMPLP800

3221232 GLASS FOR OVEN LAMP RECEPTACLE \varnothing 53 mm
 thread \varnothing 33 mm - overall height 32 mm
 for Convection oven (COVEN)



COVEN EMPLG800

Microswitches

3240286 DOOR MICROSWITCH MS09 5A 250V
 for Convection oven (COVEN)



COVEN EMMS1600



Suitable for:

COVEN

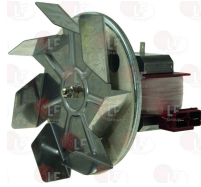


Suitable for:

Motors

3240000 MOTOR WITH FAN 45W 220V 50/60Hz

fan \varnothing 150 mm
for Convection oven electric (COVEN)
C6E - TEC10 - TEC10MD - TEC10MX - TEC2 - TEC3
TEC3H - TEC3MD - TEC3MX - TEC4MX - TEC4P
TEC6 - TEC6H - TEC6MD - TEC6MX - 6EMD - 6EMX



COVEN EMMVR150

3240285 MOTOR 1055.1401 0.2Kw 230V 50Hz

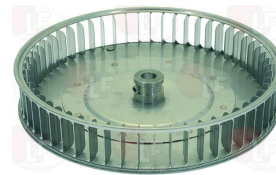
1.5A 1380rpm - capacitor 8 μ F
for Convection oven electric (COVEN) N5P - N5PMEC
N6MD - N6MX - TEC10P - TEC10PMEC - TEC15
TEC15MD - TEC15MX - TEC20 - TEC20MD - TEC5P
TEC5PMEC - TEC7 - 10EMD - 10EMX - 6EMD - 6EMX
for Convection oven gas (COVEN) N6GMD - N6GMX
TEC10G - TEC10GMD - TEC10GP - TEC10GPMEC
TEC15G - TEC15GMD - TEC20G - TEC20GMD - TEC5GP
TEC5GPMEC - TEC6G - TEC6GMD - TEC6GMX - TEC7G
10GMD - 6GMD - 6GMX



COVEN EMMTAH13

3340073 FAN \varnothing 240 mm

thickness 43 mm
total blades 55 - \varnothing hole 13 mm
for Convection oven gas (COVEN) C6G - TEC6G
TEC6GMD - TEC6GMX - 6GMD - 6GMX



COVEN MCCVE2406G

COVEN MCVN0250

Pilot burners and accessories

3020006 THREE-FLAME PILOT BURNER SIT

multigas with jet \varnothing 0.20 mm
with 3 positions bracket



COVEN EMSITBP0

3001003 ROUND SPARKING PLUG \varnothing 7x44 mm

male faston M4x1 mm
total length 65 mm



COVEN EMSITCA0



Probes

- 3445021 PROBE TEMPERATURE PT100**
 3 wires - with fastening fitting \varnothing 1/4"
 bulb \varnothing 4x120 mm - cable length 1500 mm
 for chamber temperature
 for all models
 for Convection oven (COVEN)



COVEN EMSONDAT

COVEN EMSONTERTEC

Rotary switches

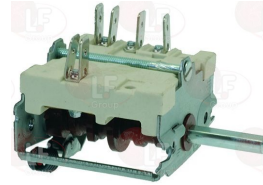
- 3057019 SELECTOR SWITCH 0-1 POSITIONS**
 contact capacity 16A 250V - max 150°C
 D-shaft \varnothing 6x4.6 mm
 for Convection oven (COVEN)
 for Convection oven electric (COVEN) TEC10MX
 TEC15MX - TEC4MX - TEC6MX
 for Convection oven gas (COVEN) N6GMD - TEC10GMD
 TEC15GMD - TEC6GMD



COVEN EMIGSFMX

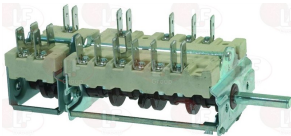
COVEN EMIG1600

- 3057138 SELECTOR SWITCH 0-3 POSITIONS**
 for steam adjustment
 contact capacity 16A 250V - max 150°C
 D-shaped pin \varnothing 6x4.6 mm
 for Convection oven electric (COVEN) TEC10MX
 TEC15MX - TEC4MX - TEC6MX - 10EMX
 for Convection oven gas (COVEN) TEC6GMX



COVEN EMIGSUMX

- 3057214 SELECTOR SWITCH 0-3 POSITIONS**
 contact capacity 32A 250V - max 150°C
 D-shaped pin \varnothing 6x4.6 mm
 for Convection oven electric (COVEN) TEC10MD
 TEC20MD - TEC3MX - TEC6MD



COVEN EMIGSNMX

Solenoid valves

- 3120004 SOLEN. VALVE ELBITYPE 319 1 WAY 90°**
 220/240V 50/60Hz - max. temperature 90°C
 inlet 3/4" - outlet \varnothing 10.5 mm



COVEN EMUASRPE

- 3120006 SOLEN. VALVE ELBITYPE 339 2 WAY 90°**
 220/240V 50/60Hz - max. temperature 90°C
 inlet 3/4" - two outlets \varnothing 10.5 mm



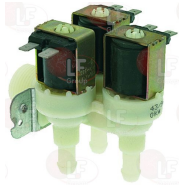
COVEN EMUA2RPE



Suitable for:

Suitable for:

3120013 SOLENOID VALVE ELBI TYPE 359 3-WAY 90°
220/240V 50/60Hz - max. temperature 90°C
inlet 3/4" - three outlets ø 10.5 mm



COVEN EMUA3C04

Spark generators

3181002 SPARK GENERATOR 2 OUTLETS
220/240V 50/60Hz



COVEN EMACA000

Sparking and detection plugs

3020176 ROUND DETECTION PLUG ø 7 mm
overall length 195 mm
for Convection oven gas (COVEN) N6GMD - N6GMX
TEC10G - TEC10GMD - TEC10GP - TEC10GPMEC
TEC15G - TEC15GMD - TEC20G - TEC20GMD - TEC5GP
TEC5GPMEC - TEC6G - TEC6GMD - TEC6GMX - TEC7G



COVEN EMCAS2

3001003 ROUND SPARKING PLUG ø 7x44 mm
male faston M4x1 mm
total length 65 mm



COVEN EMSITCA0

3020175 ROUND SPARKING PLUG ø 7x68 mm
overall length 200 mm
for Convection oven gas (COVEN) N6GMD - N6GMX
TEC10G - TEC10GMD - TEC10GP - TEC10GPMEC
TEC15G - TEC15GMD - TEC20G - TEC20GMD - TEC5GP
TEC5GPMEC - TEC6G - TEC6GMD - TEC6GMX - TEC7G

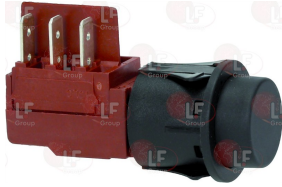


COVEN EMCAS1



Switches

- 3319689 SWITCH 2-POLE BLACK 16A 250V**
 16(4)A 250V
 max. temperature 100°C
 mounting hole \varnothing 24 mm
 for Convection oven electric (COVEN) TEC10P
 TEC4P - TEC5P
 for Convection oven gas (COVEN) TEC10GP - TEC5GP



COVEN EMDEVOL

Telethermometers

- 3441071 WHITE TELETHERMOMETER \varnothing 60 mm 50-350°C**
 metal sheath
 covered capillary length 1600 mm
 plastic covered bulb \varnothing 6x20 mm



COVEN EMTR0350

Thermocouples and accessories

- 3440837 THERMOCOUPLE SIT M9x1 100 cm - 10 PCS**



COVEN EMSITT20

- 3440037 THERMOCOUPLE SIT M9x1 100 cm.**



COVEN EMSITT20

- 3440837 THERMOCOUPLE SIT M9x1 100 cm - 10 PCS**



COVEN EMSITT20



Suitable for:

3440039 THERMOCOUPLE SIT M9x1 150 cm



COVEN EMSITT150

Suitable for:

3440839 THERMOCOUPLE SIT M9x1 150 cm - 10 PCS



COVEN EMSITT150

3440839 THERMOCOUPLE SIT M9x1 150 cm - 10 PCS

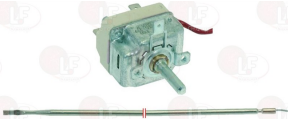


COVEN EMSITT150

Thermostats

3444440 SINGLE-PHASE THERMOSTAT 50-280°C

D-shaped pin \varnothing 6x4.6 mm
covered capillary length 900 mm - 16A 250V
bulb \varnothing 3x200 mm
for Convection oven electric (COVEN) TEC10
TEC10P - TEC10PMEC - TEC15 - TEC2 - TEC20
TEC3 - TEC4P - TEC5PMEC - TEC6
for Convection oven gas (COVEN) TEC10G
TEC10GPMEC - TEC15G - TEC20G - TEC5GPMEC



COVEN EMTS0300

Timers

3446004 TIMER 120 MINUTES

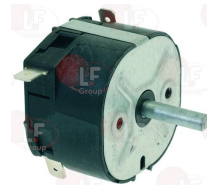
complete with silk-screen printed plate
mechanical timer with sound alarm
mechanical movement with balance wheel
manual left hand positioning possible
120 minutes manually set cycle
bipolar with contact capacity 16(3)A 250V
max temperature 125°C
D-shaped pin \varnothing 6x4.6 mm



COVEN EMTM0120

3446038 TIMER 120 MINUTES M2

mechanical movement with balance wheel
manually set cycle 120 minutes
2 poles with contact capacity 16(4)A 250V
max temperature 125°C - D-shaped pin \varnothing 6x4.6 mm




















COVEN EMFTC120

The data herewith contained may change without notice and LF SpA cannot be held responsible for possible errors stated or resulting by the use of this document. All rights reserved. No part of this publication may be reproduced without written permission by LF SpA.



Distributing Components, Spare Parts & Accessories in original quality worldwide

-
-  **LF SpA HEADQUARTERS**
via Voltri, 80 - 47522 Cesena (FC) ITALY
Tel. +39 0547 34 11 11 - Fax +39 0547 34 11 10
www.lfrcambi724.it - www.lfrcambi724.mobi
info@lfrcambi.it
Export Dept.: Tel. +39 0547 34 11 50 - Fax: +39 0547 34 11 55
www.lfspareparts724.com - www.lfspareparts724.mobi
export@lfspareparts.com
-  **LF SpA HOUSEHOLD COMPONENTS DIVISION**
Via Padriciano, 34149 Trieste - Italia - AREA Science Park
Tel. +39 0547 34 12 42 - Fax +39 0547 34 12 48
www.lfspareparts724.com - www.lfspareparts724.mobi
info@lfspareparts.com
-  **EPGC Sas FRANCE**
13, Rue des Forts - 59960 Neuville en Ferrain
Tel. +33 (0)3 20 25 06 21
Fax +33 (0)3 20 25 34 12
www.epgc.com
www.epgc724.mobi
epgc@epgc.com
-  **LF GmbH GERMANY**
Junkersstrasse, 3 - D-82178 Puchheim - München
Tel. +49 89 89 45 78 66
Fax +49 89 89 45 78 88
www.lfersatzteile724.de
www.lfersatzteile724.mobi
info@lfersatzteile.de
-  **LF China REPUBLIC OF CHINA**
Room 403, No.2, Huadu Mansion, Lane 422, Huanghua Rd.
Minhang Dist. - 201103 Shanghai
Tel. +86 (0)21 33 53 66 31
Fax +86 (0)21 33 53 66 32
www.lfspareparts724.com
www.lfspareparts724.mobi
china@lfspareparts.com
-  **OOO LF RUSSIAN FEDERATION**
Ul. Anatoliya Zhivova, 8 - office 1 - 123100 Moscow
Tel./Fax +7 495 725 26 53
www.lfspareparts724.ru
www.lfspareparts724.mobi
info@lfspareparts.ru
-  **LF Repuestos Horeca S.L.U. SPAIN**
Poligono Industrial Carpetania - C/Miguel Faraday, 8 - 28906 Getafe
Tel. +34 91 477 91 00
Fax +34 91 477 90 81
www.lfrepuestos-horeca724.es
www.lfrepuestos724.mobi
info@lfrepuestos.es
-  **LF SpA Cesena (IT) Swiss Branch Steinhausen SWITZERLAND**
Sennweidstrasse, 45 - CH-6312 Steinhausen
Tel. +41 (0)41 760 15 80-1
Fax +41 (0)41 760 15 85
www.lfersatzteile724.ch
www.lfersatzteilech724.mobi
info@lfersatzteile.ch
-  **LF Spare Parts Ltd. UNITED KINGDOM**
A10a Lakeside Business Park, Broadway Lane
South Cerney, Gloucestershire GL7 5XL
Tel. +44 (0)1285 86 16 25
Fax +44 (0)1285 86 39 49
www.lfspareparts724.co.uk
www.lfspareparts724.mobi
info@lfspareparts.co.uk
-
-  **AUSTRALIA AND NEW ZEALAND**
www.lfspareparts724.com
andrea.calvio@lfspareparts.com
-  **AUSTRIA**
www.lfersatzteile724.at
info@lfersatzteile.at
-  **BALKAN COUNTRIES**
www.lfspareparts724.com
matijaramov@lfspareparts.com
-  **BALTIC COUNTRIES**
www.lfspareparts724.com
inara.silina@lfspareparts.com
-  **CENTRAL AND EASTERN EUROPE**
www.lfspareparts724.cz
jiri.kremla@lfspareparts.cz
-  **DENMARK**
www.lfspareparts724.dk
michael.leth@lfspareparts.com
-  **JAPAN**
www.lfspareparts724.jp
hiroshi.ukai@lfspareparts.jp
-  **SOUTH KOREA**
www.lfspareparts724.com
fabio.doni@lfspareparts.com
-  **TURKEY**
www.lfyedekparca724.com
basar.ergun@lfyedekparca.com
-  **USA AND CANADA**
www.lfspareparts724.us
sauro.dallaglio@lfspareparts.us
howard.truitt@lfspareparts.us