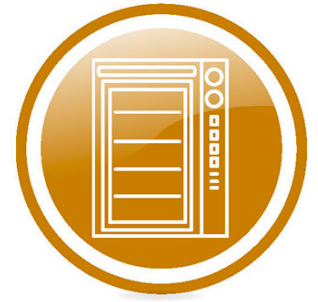




Spare parts for:

**Ovens**



Suitable for:

**EVCO**



This catalogue is automatically generated.  
Therefore, the sequence of the items might  
not be always shown at best.

Updates will be issued in case of additions  
and/or amendments.

*Suitable **universal spare parts** may not be included*

Rel. 2015-10221744





Suitable for:

EVCO



Suitable for:

## Buzzers

**3392014** PANEL ALARM 72x41 mm  
cable length 450 mm



EVCO

## Electronic controllers

**3441045** TELETHERMOMETER EVK100M3 TCK  
power supply 12Vac/dc  
thermostat setting range 0+999°C  
room temperature -5+55°C  
TCK type probe (not included)  
connections by screwed terminal block  
mounting hole 71x29 mm



EVCO EVK100M3

EVCO FK100AK2V001

**3445135** THERMOSTAT EC4-132-J220 TCJ  
power supply 230V 50/60Hz  
thermostat setting range -0+700°C  
2 relay outlets 6(2) 250V for heating elements  
room temperature 0+60°C  
TCJ thermocouple type probe (not included)  
connections by screw terminal block  
front size 48x48x100 mm  
mounting hole 45x45 mm



EVCO EC4-132-J220

EVCO EC4132J220S001

**3445109** PROBE TCJ VETROTEX 3000 mm  
2-wire probe temperature range 0+600°C  
temperature cable max 350°C  
error limit  $\pm 0.75\%$  below 0°C  
response time 30 sec  
bulb  $\varnothing$  6x100 mm



EVCO ECSND2343A

EVCO 3907240006

**3445110** TRANSFORMER 230V/12V 3VA  
primary tension 230Vca 50/60Hz  
secondary tension 12Vca 3VA  
room temperature 0+60°C  
screw terminal block  
IMQ approved



EVCO ECTSFB-000

**3445111** TRANSFORMER 24V/12V 3VA  
primary tension 24Vca 50/60Hz  
secondary tension 12Vca 3VA  
room temperature 0+60°C  
screw terminal block  
IMQ approved



EVCO ECTSFB-200



- 3445121 THERMOSTAT EK340A TCJ**  
 power supply 230Vac 50/60Hz  
 thermostat setting range 0+600°C  
 ceiling and deck dual temperature setting  
 2 relay outputs 6(2)A 250V for heating elements  
 1 relay output 6(2)A 250V for heating  
 1 relay output 6(2)A 250V for chamber light  
 room temperature 0+55°C  
 inbuilt alarm buzzer  
 thermocouple TCJ type probe (not included)  
 connections by screwed terminal block  
 front dimensions 72x144x79 mm  
 mounting hole 138x67 mm



EVCO EC8-240-J220

EVCO EC8-340-J220

EVCO EK340AJ7

- 3445136 THERMOSTAT EK342A TCJ**  
 power supply 230Vac 50/60Hz  
 thermostat setting range -0+600°C  
 ceiling and deck dual temperature setting  
 2 relay outputs 6(2)A 250V for heating elements  
 1 relay output 6(2)A 250V for heating  
 1 relay output 6(2)A 250V for chamber light  
 inbuilt alarm buzzer  
 room temperature 0+55°C  
 thermocouple TCJ type probe (not included)  
 connections by screwed terminal block  
 front dimensions 72x144x79 mm  
 mounting hole 138x67 mm  
 with cooking timer - steam control  
 ex EC8-342-J220



EVCO EK342AJ7

- 3445110 TRANSFORMER 230V/12V 3VA**  
 primary tension 230Vca 50/60Hz  
 secondary tension 12Vca 3VA  
 room temperature 0+60°C  
 screw terminal block  
 IMQ approved



EVCO ECTSFB-000

- 3445109 PROBE TCJ VETROTEX 3000 mm**  
 2-wire probe temperature range 0+600°C  
 temperature cable max 350°C  
 error limit  $\pm 0.75\%$  below 0°C  
 response time 30 sec  
 bulb  $\varnothing$  6x100 mm



EVCO ECSND2343A

EVCO 3907240006

- 3445111 TRANSFORMER 24V/12V 3VA**  
 primary tension 24Vca 50/60Hz  
 secondary tension 12Vca 3VA  
 room temperature 0÷60°C  
 screw terminal block  
 IMQ approved



EVCO ECTSFB-200



Suitable for:

# EVCO



Suitable for:

**3445137 THERMOSTAT EK354A TCJ**  
 power supply 230Vac 50/60Hz  
 thermostat setting range -0+600°C  
 ceiling and deck dual temperature setting  
 2 relay outputs 6(2)A 250V for heating elements  
 1 relay output 6(2)A 250V for heating  
 1 relay output 6(2)A 250V for chamber light  
 inbuilt alarm buzzer  
 room temperature 0+55°C  
 thermocouple TCJ type probe (not included)  
 connections by screwed terminal block  
 front dimensions 72x144x79 mm  
 mounting hole 138x67 mm  
 delayed starting  
 with cooking timer - steam control



EVCO EC8-354-J220

EVCO EK354AJ7

**3445109 PROBE TCJ VETROTEX 3000 mm**  
 2-wire probe temperature range 0+600°C  
 temperature cable max 350°C  
 error limit  $\pm 0.75\%$  below 0°C  
 response time 30 sec  
 bulb  $\varnothing$  6x100 mm



EVCO ECSND2343A

EVCO 3907240006

**3445110 TRANSFORMER 230V/12V 3VA**  
 primary tension 230Vca 50/60Hz  
 secondary tension 12Vca 3VA  
 room temperature 0+60°C  
 screw terminal block  
 IMQ approved



EVCO ECTSFB-000

**3445111 TRANSFORMER 24V/12V 3VA**  
 primary tension 24Vca 50/60Hz  
 secondary tension 12Vca 3VA  
 room temperature 0÷60°C  
 screw terminal block  
 IMQ approved



EVCO ECTSFB-200

**3445142 THERMOSTAT EK356A TCJ**  
 power supply 230Vac 50/60Hz  
 thermostat setting range -0+600°C  
 ceiling and deck dual temperature setting  
 2 outlets 6(2)A 250V for heating elements  
 1 outlet 6(2)A 250V for heating  
 1 outlet 6(2)A 250V for chamber light  
 inbuilt alarm buzzer  
 room temperature 0+55°C  
 thermocouple TCJ type probe (not included)  
 connections by screwed terminal block  
 front dimensions 72x144x79 mm  
 mounting hole 138x67 mm  
 delayed starting  
 cooking timer - steam control



EVCO EK356AJ7

**3445109 PROBE TCJ VETROTEX 3000 mm**  
 2-wire probe temperature range 0+600°C  
 temperature cable max 350°C  
 error limit  $\pm 0.75\%$  below 0°C  
 response time 30 sec  
 bulb  $\varnothing$  6x100 mm



EVCO ECSND2343A

EVCO 3907240006



Suitable for:

**3445110 TRANSFORMER 230V/12V 3VA**  
 primary tension 230Vca 50/60Hz  
 secondary tension 12Vca 3VA  
 room temperature 0+60°C  
 screw terminal block  
 IMQ approved



EVCO ECTSFB-000

# EVCO



Suitable for:

**3445111 TRANSFORMER 24V/12V 3VA**  
 primary tension 24Vca 50/60Hz  
 secondary tension 12Vca 3VA  
 room temperature 0÷60°C  
 screw terminal block  
 IMQ approved



EVCO ECTSFB-200

**3445076 THERMOSTAT EVK411 PTC/NTC/PT100/PT1000**  
 power supply 12Vca/dc 1.5VA  
 thermostat setting range 99+600°C  
 ON-OFF control with one actuation point  
 1 exchange relay output 6(3)A 250V  
 inbuilt alarm buzzer  
 access to configuration parameters through  
 password  
 serial port for data exchange  
 room temperature 0+60°C  
 PTC/NTC/PT100/PT1000 type probe (not included)  
 connections by screwed terminal block  
 front dimensions 74x32x65 mm  
 mounting hole 71x29 mm



EVCO EC3-133-C012

EVCO EVK411M2VHBS

EVCO FK400AC2V001

**3445073 THERMOSTAT EVK411 TCJ**  
 power supply 12Vca/dc 1.5VA  
 thermostat setting range 0+600°C  
 ON-OFF control with one actuation point only  
 1 changeover relay output 16A  
 alarm buzzer  
 access to configuration parameters through  
 password - TTL serial port  
 room temperature 0+60°C  
 thermocouple TCJ type probe (not included)  
 connections by screw terminal block  
 front dimensions 74x32x65 mm  
 mounting hole 71x29mm



EVCO EC3-133-J012

EVCO EVK411J2VHBS

EVCO FK400AJ2V001

**3445109 PROBE TCJ VETROTEX 3000 mm**  
 2-wire probe temperature range 0+600°C  
 temperature cable max 350°C  
 error limit ±0.75% below 0°C  
 response time 30 sec  
 bulb ø 6x100 mm



EVCO ECSND2343A

EVCO 3907240006



Suitable for:

**3445110 TRANSFORMER 230V/12V 3VA**  
 primary tension 230Vca 50/60Hz  
 secondary tension 12Vca 3VA  
 room temperature 0+60°C  
 screw terminal block  
 IMQ approved



EVCO ECTSFB-000

## EVCO



Suitable for:

**3445111 TRANSFORMER 24V/12V 3VA**  
 primary tension 24Vca 50/60Hz  
 secondary tension 12Vca 3VA  
 room temperature 0÷60°C  
 screw terminal block  
 IMQ approved



EVCO ECTSFB-200

**5036703 THERMOSTAT EVK411 TCJ**  
 power supply 230V  
 thermostat setting range -100+800°C  
 ON-OFF control with one actuation point only  
 1 changeover relay output 8(3)A 250V  
 TCJ type probe (not included)  
 room temperature 0+55°C  
 access to configuration parameters through  
 password - data exchange serial port  
 connections by screw terminal block  
 front dimensions 74x32x65 mm  
 mounting hole 71x29mm



EVCO EVK411J7VHBS

**3445250 THERMOSTAT EVK412 TCJ/PTC/NTC/PT1000**  
 power supply 12-24V  
 temperature setting range -100+1300°C  
 ON-OFF control with two actuation points  
 2 changeover relay outputs 8/16A 250V  
 room temperature 0+55°C  
 probe type TCJ-PTC-NTC-PT1000-PT100 (not included)  
 connections by screw terminal block  
 front dimensions 74x32x67 mm  
 mounting hole 71x29 mm



EVCO EVK412M3VXBS

**3445141 THERMOSTAT EV7401J J/K/PTC/NTC/PT100**  
 double power supply 24/230V 50/60Hz  
 thermostat setting range +50+270°C  
 ON-OFF control with one actuation point only  
 1 changeover relay output 8(3)A 250V  
 room temperature 0+55°C  
 multiprobe:  
 thermocouple "J" -100+700°C  
 thermocouple "K" -100+1150°C  
 PTC -50+150°C  
 NTC -40+110°C  
 Pt 100 2/3 wires: -100+650°C  
 connections by extractable screw terminal block  
 front dimensions 72x72x100 mm



EVCO EV701J7

EVCO EV7401J7E000002

**3445139 THERMOSTAT EV7401M J/K/PTC/NTC/PT100**  
 double power supply 24/230V 50/60Hz  
 ON-OFF control with one actuation point only  
 changeover relay outlet 8(3)A 250V  
 2 types of programmable temperature alarms  
 inbuilt failure alarm  
 password entry to configuration parameters  
 room temperature 0÷60°C  
 multiple probe:  
 thermocouple "J" -100/750°C  
 thermocouple "K" -100/1200°C  
 PTC -50/150°C  
 NTC -40+110°C  
 Pt 100 2/3 wires: -100/700°C  
 connections by extractable screw terminal block  
 front dimensions 72x72x100 mm



EVCO EC7-133-J220

EVCO EC7-133-P220

EVCO EV7401M6



Suitable for:

Suitable for:

- 3445327 THERMOSTAT ICPLUS915 PT100/TCJ/TCK**  
 power supply 12V  
 thermostat setting range -150+1350°C  
 ON-OFF control with two actuation points  
 2 exchange relay outputs 8(4)A 250V  
 room temperature -5+55°C  
 probe type PT100-TCJ-TCK (not included)  
 connections by screwed terminal block  
 front dimension 78x37x64 mm  
 mounting hole 71x29 mm



EVCO EWPC902/H

EVCO EWPC902/T

- 3446128 TIMER EVK702 12V**  
 2 changeover relay outputs 8(3)A 250V  
 from 0.1s to 99H:59 minutes  
 ambient temperature 0÷55°C  
 power supply 12Vca/dc  
 connections with screw terminal block  
 dimensions 75x33x67 mm  
 mounting hole 71x28 mm



EVCO EVK702D2EXS

EVCO FK700AX2E001

- 3445110 TRANSFORMER 230V/12V 3VA**  
 primary tension 230Vca 50/60Hz  
 secondary tension 12Vca 3VA  
 room temperature 0+60°C  
 screw terminal block  
 IMQ approved



EVCO ECTSFB-000

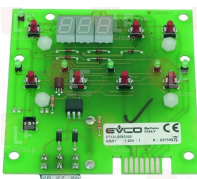
- 3445111 TRANSFORMER 24V/12V 3VA**  
 primary tension 24Vca 50/60Hz  
 secondary tension 12Vca 3VA  
 room temperature 0÷60°C  
 screw terminal block  
 IMQ approved



EVCO ECTSFB-200

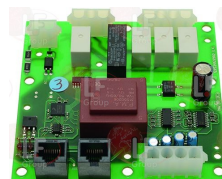
## Electronic printed-circuit boards

- 3390307 BUTTON PANEL ELECTRONIC BOARD 100x95 mm**



EVCO CT1AL0090000

- 3390403 ELECTRONIC BOARD EXPANSION 104x104 mm for BOILER**

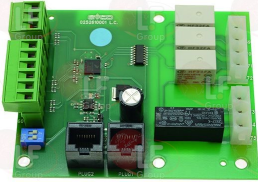


EVCO



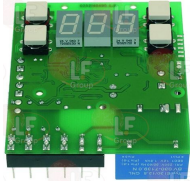
Suitable for:

**3390404 ELECTRONIC BOARD EXPANSION 104x86 mm**  
for WASHING



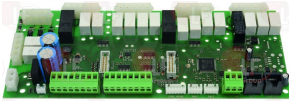
EVCO

**3390364 ELECTRONIC DISPLAY BOARD 80x90 mm**  
for TIMER/PENETRATION PROBE



EVCO

**3390401 MOTHERBOARD 250x105 mm**



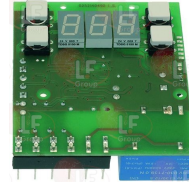
EVCO

**EVCO**



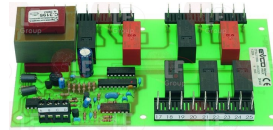
Suitable for:

**3390363 ELECTRONIC DISPLAY BOARD 80x90 mm**  
for cooking chamber



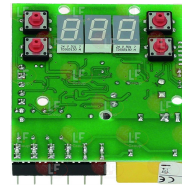
EVCO

**3390074 MOTHERBOARD 175x100 mm**



EVCO

**7100752 PC BOARD DISPLAY 91x80 mm**



EVCO CT1TM0010100

## Penetration probes

**3394250 OVEN PENETRATION PROBE SET**  
this set contains:  
electronic thermostat with scale 0+600°C  
penetration probe with coupling to the  
compartment  
temperature max:270°C  
transformer 230V 12A  
mounting hole 71x29 mm



EVCO

## Probes

**3445157 PROBE NTC PVC 1500 mm**  
temperature range -30°+80°C  
bulb ø 6x40 mm



EVCO EVTPN815P201

**3445117 PROBE PT100 VETROTEX 3000 mm**  
3-wire probe temperature range 0+350°C  
bulb ø 6x100 mm



EVCO ECSND1443A

EVCO EVTPC830V300





Suitable for:

Suitable for:

**3445109 PROBE TCJ VETROTEX 3000 mm**  
 2-wire probe temperature range 0+600°C  
 temperature cable max 350°C  
 error limit  $\pm 0.75\%$  below 0°C  
 response time 30 sec  
 bulb  $\varnothing$  6x100 mm

**3445112 PROBE TCK VETROTEX 3000 mm**  
 2-wire probe temperature range 0+350°C  
 error limits  $\pm 2\%$  above 0°C  
 30 seconds response time  
 bulb  $\varnothing$  6x100 mm



EVCO ECSND2343A

EVCO 3907240006

EVCO ECSND3343A

EVCO EVTPK830V200

EVCO 3907340002

**3445070 PTC PVC PROBE 1500 mm**  
 2-wire probe temperature range -30+80°C  
 bulb  $\varnothing$  6x40 mm

**3445107 PTC PVC PROBE 3000 mm**  
 2-wire probe temperature range -30+80°C  
 bulb  $\varnothing$  6x40 mm



EVCO EVTPP815P200

EVCO EVTPP815P201

EVCO ECSND0110

EVCO ECSND0131A

EVCO ECSND0141A

EVCO EVTPP830P201

**3440159 TEMPERATURE PROBE**  
 2 wires - bulb  $\varnothing$  6x30 mm  
 cable length 1500 mm



EVCO ECSND2311A

## Transformers

**3445110 TRANSFORMER 230V/12V 3VA**  
 primary tension 230Vca 50/60Hz  
 secondary tension 12Vca 3VA  
 room temperature 0+60°C  
 screw terminal block  
 IMQ approved

**3445111 TRANSFORMER 24V/12V 3VA**  
 primary tension 24Vca 50/60Hz  
 secondary tension 12Vca 3VA  
 room temperature 0÷60°C  
 screw terminal block  
 IMQ approved




















EVCO ECTSFB-000

EVCO ECTSFB-200

*The data herewith contained may change without notice and LF SpA cannot be held responsible for possible errors stated or resulting by the use of this document. All rights reserved. No part of this publication may be reproduced without written permission by LF SpA.*



## Distributing Components, Spare Parts & Accessories in original quality worldwide

- 
-  **LF SpA HEADQUARTERS**  
via Voltri, 80 - 47522 Cesena (FC) ITALY  
Tel. +39 0547 34 11 11 - Fax +39 0547 34 11 10  
[www.lfrcambi724.it](http://www.lfrcambi724.it) - [www.lfrcambi724.mobi](http://www.lfrcambi724.mobi)  
[info@lfrcambi.it](mailto:info@lfrcambi.it)  
Export Dept.: Tel. +39 0547 34 11 50 - Fax: +39 0547 34 11 55  
[www.lfspareparts724.com](http://www.lfspareparts724.com) - [www.lfspareparts724.mobi](http://www.lfspareparts724.mobi)  
[export@lfspareparts.com](mailto:export@lfspareparts.com)
  -  **LF SpA HOUSEHOLD COMPONENTS DIVISION**  
Via Padriciano, 34149 Trieste - Italia - AREA Science Park  
Tel. +39 0547 34 12 42 - Fax +39 0547 34 12 48  
[www.lfspareparts724.com](http://www.lfspareparts724.com) - [www.lfspareparts724.mobi](http://www.lfspareparts724.mobi)  
[info@lfspareparts.com](mailto:info@lfspareparts.com)
  -  **EPGC Sas FRANCE**  
13, Rue des Forts - 59960 Neuville en Ferrain  
Tel. +33 (0)3 20 25 06 21  
Fax +33 (0)3 20 25 34 12  
[www.epgc.com](http://www.epgc.com)  
[www.epgc724.mobi](http://www.epgc724.mobi)  
[epgc@epgc.com](mailto:epgc@epgc.com)
  -  **LF GmbH GERMANY**  
Junkersstrasse, 3 - D-82178 Puchheim - München  
Tel. +49 89 89 45 78 66  
Fax +49 89 89 45 78 88  
[www.lfersatzteile724.de](http://www.lfersatzteile724.de)  
[www.lfersatzteile724.mobi](http://www.lfersatzteile724.mobi)  
[info@lfersatzteile.de](mailto:info@lfersatzteile.de)
  -  **LF China REPUBLIC OF CHINA**  
Room 403, No.2, Huadu Mansion, Lane 422, Huanghua Rd.  
Minhang Dist. - 201103 Shanghai  
Tel. +86 (0)21 33 53 66 31  
Fax +86 (0)21 33 53 66 32  
[www.lfspareparts724.com](http://www.lfspareparts724.com)  
[www.lfspareparts724.mobi](http://www.lfspareparts724.mobi)  
[china@lfspareparts.com](mailto:china@lfspareparts.com)
  -  **OOO LF RUSSIAN FEDERATION**  
Ul. Anatoliya Zhivova, 8 - office 1 - 123100 Moscow  
Tel./Fax +7 495 725 26 53  
[www.lfspareparts724.ru](http://www.lfspareparts724.ru)  
[www.lfspareparts724.mobi](http://www.lfspareparts724.mobi)  
[info@lfspareparts.ru](mailto:info@lfspareparts.ru)
  -  **LF Repuestos Horeca S.L.U. SPAIN**  
Poligono Industrial Carpetania - C/Miguel Faraday, 8 - 28906 Getafe  
Tel. +34 91 477 91 00  
Fax +34 91 477 90 81  
[www.lfrepuestos-horeca724.es](http://www.lfrepuestos-horeca724.es)  
[www.lfrepuestos724.mobi](http://www.lfrepuestos724.mobi)  
[info@lfrepuestos.es](mailto:info@lfrepuestos.es)
  -  **LF SpA Cesena (IT) Swiss Branch Steinhausen SWITZERLAND**  
Sennweidstrasse, 45 - CH-6312 Steinhausen  
Tel. +41 (0)41 760 15 80-1  
Fax +41 (0)41 760 15 85  
[www.lfersatzteile724.ch](http://www.lfersatzteile724.ch)  
[www.lfersatzteilech724.mobi](http://www.lfersatzteilech724.mobi)  
[info@lfersatzteile.ch](mailto:info@lfersatzteile.ch)
  -  **LF Spare Parts Ltd. UNITED KINGDOM**  
A10a Lakeside Business Park, Broadway Lane  
South Cerney, Gloucestershire GL7 5XL  
Tel. +44 (0)1285 86 16 25  
Fax +44 (0)1285 86 39 49  
[www.lfspareparts724.co.uk](http://www.lfspareparts724.co.uk)  
[www.lfspareparts724.mobi](http://www.lfspareparts724.mobi)  
[info@lfspareparts.co.uk](mailto:info@lfspareparts.co.uk)
  -  **AUSTRALIA AND NEW ZEALAND**  
[www.lfspareparts724.com](http://www.lfspareparts724.com)  
[andrea.calvio@lfspareparts.com](mailto:andrea.calvio@lfspareparts.com)
  -  **AUSTRIA**  
[www.lfersatzteile724.at](http://www.lfersatzteile724.at)  
[info@lfersatzteile.at](mailto:info@lfersatzteile.at)
  -  **BALKAN COUNTRIES**  
[www.lfspareparts724.com](http://www.lfspareparts724.com)  
[matijaramov@lfspareparts.com](mailto:matijaramov@lfspareparts.com)
  -  **BALTIC COUNTRIES**  
[www.lfspareparts724.com](http://www.lfspareparts724.com)  
[inara.silina@lfspareparts.com](mailto:inara.silina@lfspareparts.com)
  -  **CENTRAL AND EASTERN EUROPE**  
[www.lfspareparts724.cz](http://www.lfspareparts724.cz)  
[jiri.kremla@lfspareparts.cz](mailto:jiri.kremla@lfspareparts.cz)
  -  **DENMARK**  
[www.lfspareparts724.dk](http://www.lfspareparts724.dk)  
[michael.leth@lfspareparts.com](mailto:michael.leth@lfspareparts.com)
  -  **JAPAN**  
[www.lfspareparts724.jp](http://www.lfspareparts724.jp)  
[hiroshi.ukai@lfspareparts.jp](mailto:hiroshi.ukai@lfspareparts.jp)
  -  **SOUTH KOREA**  
[www.lfspareparts724.com](http://www.lfspareparts724.com)  
[fabio.doni@lfspareparts.com](mailto:fabio.doni@lfspareparts.com)
  -  **TURKEY**  
[www.lfyedekparca724.com](http://www.lfyedekparca724.com)  
[basar.ergun@lfyedekparca.com](mailto:basar.ergun@lfyedekparca.com)
  -  **USA AND CANADA**  
[www.lfspareparts724.us](http://www.lfspareparts724.us)  
[sauro.dallaglio@lfspareparts.us](mailto:sauro.dallaglio@lfspareparts.us)  
[howard.truitt@lfspareparts.us](mailto:howard.truitt@lfspareparts.us)