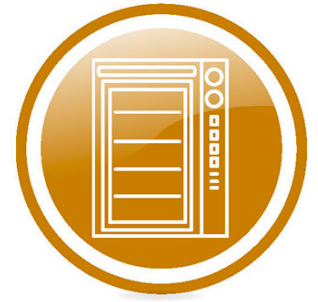




Spare parts for:

**Ovens**



Suitable for:

**FRIMA**



This catalogue is automatically generated.  
Therefore, the sequence of the items might  
not be always shown at best.

Updates will be issued in case of additions  
and/or amendments.

*Suitable **universal spare parts** may not be included*

Rel. 2015-10221747





Suitable for:

# FRIMA



Suitable for:

## Axial motors

**3240916 AXIAL FAN EMB 127x127x38 mm**  
25W 12Vdc



FRIMA 4000474

FRIMA 4002899

**3240501 AXIAL FAN SUNON 120x120x38 mm**  
ball bearings  
230V 50/60Hz 22W 2850rpm  
DP200A 2123XBT.GN



FRIMA 31011008

**3240519 AXIAL MOTOR FAN EBM 4656N**  
230V 50Hz 19W 2650rpm  
119x119x38 mm  
ball bearing



FRIMA

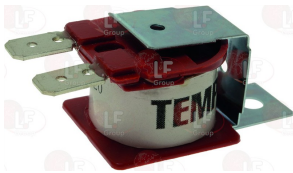
**5004018 MOTOR FAN AXIALE EBM 8412NH**  
12Vdc 2.2W  
80x80x25 mm  
ball bearing



FRIMA 31011018

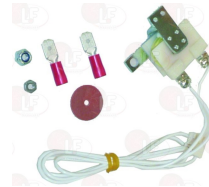
## Buzzers

**3397302 ALARM BELL 220V**



FRIMA 30060101

**3397204 ALARM BUZZER SET 12V 50Hz**  
cable length 395 mm



FRIMA 30060107

FRIMA 4002087

FRIMA 8700136

**3397219 ALARM BUZZER 24V**



FRIMA 30060103

## Caps

**7150218 RUBBER CUP PANEL CLOSING  $\varnothing$  19x12 mm**



FRIMA 20390331



## Castors, rollers and accessories

**7150223 CASTOR SWIVEL PIN WITH BRAKE**  
with STAINLESS STEEL supports  
dimension  $\varnothing$  100x32 mm  
threaded pin M10 - height 18 mm



FRIMA 20050404

**5033117 PIN SWIVELLING WHEEL**  
made of POLYPROPYLENE  
dimensions  $\varnothing$  125x85 mm  
threaded pin M10 - height 28 mm



FRIMA 6060101

**7150233 PIN SWIVELLING WHEEL WITH BRAKE**  
in PROPYLENE  
dimensions  $\varnothing$  125x85 mm  
threaded pin M10 - height 28 mm



FRIMA 6060100

**3346083 SWIVELLING WHEEL**  
with ZINC-PLATED supports  
dimension  $\varnothing$  125x30 mm - load capacity 80 Kg  
pin hole  $\varnothing$  12 mm



FRIMA 20050501  
FRIMA 20050606

FRIMA 20050502

FRIMA 20050604

**3346080 SWIVELLING WHEEL WITH BRAKE**  
with ZINC-PLATED supports  
dimension  $\varnothing$  125x30 mm - load capacity 80 Kg  
pin hole  $\varnothing$  12 mm



FRIMA 20050600

**5042233 WHEEL SWIVELLING PIN WITH BRAKE**  
with ZINC PLATED supports  
dimension  $\varnothing$  100x30 mm  
pin hole  $\varnothing$  12 mm



FRIMA 20050402

## Centrifugal fans

**3240758 MOTOR FAN RG100/1000-2012 25W 230V**  
50/60Hz



FRIMA 31011016

**7150240 MOTOR FAN RG130/0800-3612**  
24V 50Hz



FRIMA 31011014

**3240764 MOTOR FAN RG130/0800-3612 230/240V**  
50/60Hz



FRIMA 31011017

FRIMA 31011017P

**3240759 MOTOR FAN RG130/0800-3612 50W 230V**  
50Hz



FRIMA 7000028



Suitable for:

**3240760 MOTOR FAN RG148/1200-3633-010299**  
140W 230V 50/60Hz



FRIMA 7000067

# FRIMA



Suitable for:

**3240480 MOTOR VENTILAT.RG100/1100-2012 200W 24V**  
for gas burner



FRIMA 1004849

FRIMA 31011011

FRIMA 87201418

## Contact thermostats

**3443026 CONTACT THERMOSTAT 110°C 16A 250V**  
with automatic reset



FRIMA 30140325

## Contactors

**3397401 AEG MOTOR OVERLOAD CUTOUT Mbs25 50/60Hz**  
0.55Kw / 1÷1.6A  
3 normally open contacts



FRIMA 30310105

FRIMA 30310106

**3397402 AEG MOTOR OVERLOAD CUTOUT Mbs25 50/60Hz**  
1.1Kw / 1.6÷2.5A  
3 normally open contacts



FRIMA 30310107

**3351260 AUXILIARY CONTACT AEG HS05.01**  
10A  
1 normally closed contact



FRIMA 30280158

**3446516 AUXILIARY CONTACT AEG HS7K.01**  
10A  
1 normally closed contact



FRIMA 3028.0561

**5021314 AUXILIARY CONTACT AEG HS8.K11**  
1 contact NO  
1 contact NC



FRIMA

**3397403 AUXILIARY CONTACT AEG HS9.11**  
6A  
1 normally open contact  
1 normally closed contact



FRIMA 30310102

FRIMA 30310108





Suitable for:

**2101268 CONTACT AUXILIARY AEG HS8.K20**  
2 NO contacts



FRIMA

Suitable for:

**4046995 CONTACT AUXILIARY BENEDIKT/JAGER HN10**  
10A - 1 NO contact  
screw connection



FRIMA 40.02.641V

**3454012 CONTACTOR ABB A30-30-10**  
32A 400V 15Kw - coil 230V 50/60Hz  
3 contacts NO  
complete with 2 auxiliary contacts NO



FRIMA

**3454042 CONTACTOR ABB A9-30-01**  
9A 400V 4Kw - coil 230V 50/60Hz  
3 normally open contacts  
1 normally closed auxiliary contact



FRIMA

**3454048 CONTACTOR ABB A9-30-10**  
9A 400V 4Kw - coil 230V 50/60Hz  
3 normally open contacts  
1 normally open auxiliary contact



FRIMA

**3351209 CONTACTOR AEG LS05 9A 230V 4Kw**  
coil 230V 50/60Hz  
3 normally open contacts  
1 normally closed auxiliary contact



FRIMA 30280104  
FRIMA 30281000

FRIMA 30280500

FRIMA 30280501

**3351260 AUXILIARY CONTACT AEG HS05.01**  
10A  
1 normally closed contact



FRIMA 30280158

**3351210 CONTACTOR AEG LS05 9A 230V 4Kw**  
coil 230V 50/60Hz  
3 normally open contacts  
1 normally open auxiliary contact



FRIMA 30280504

**3351260 AUXILIARY CONTACT AEG HS05.01**  
10A  
1 normally closed contact



FRIMA 30280158



Suitable for:

# FRIMA



Suitable for:

**3351220 CONTACTOR AEG LS11K 25A 400V 11Kw**  
 coil 230V 50/60Hz  
 3 contacts NO  
 no auxiliary contact



FRIMA 30280510

**3351221 CONTACTOR AEG LS15K 32A 230V 16Kw**  
 coil 230V 50/60Hz  
 3 normally open contacts  
 no auxiliary contact



FRIMA 30280512

FRIMA 30280554

**3446516 AUXILIARY CONTACT AEG HS7K.01**  
 10A  
 1 normally closed contact



FRIMA 3028.0561

**3351222 CONTACTOR AEG LS22K 50A 230V 22Kw**  
 coil 230V 50/60Hz  
 3 normally open contacts  
 no auxiliary contact  
 for Convection oven (FRIMA)



FRIMA 30280513

FRIMA 30280558

**3351223 CONTACTOR AEG LS30K 65A 230V 30Kw**  
 coil 230V 50/60Hz  
 3 normally open contacts  
 no auxiliary contact



FRIMA 30280515

**3351211 CONTACTOR AEG LS4K 9A 230V 4Kw**  
 coil 230V 50/60Hz  
 3 normally open contacts  
 1 normally closed auxiliary contact  
 for Convection oven (FRIMA)  
 since 1/06/97



FRIMA 30280506

FRIMA 30280551

**3446516 AUXILIARY CONTACT AEG HS7K.01**  
 10A  
 1 normally closed contact



FRIMA 3028.0561



Suitable for:

**3351212 CONTACTOR AEG LS4K 9A 230V 4Kw**  
 coil 230V 50/60Hz  
 3 normally open contacts  
 1 normally open auxiliary contact



FRIMA 30250550

FRIMA 30280507

FRIMA 30280550

Suitable for:

**3446516 AUXILIARY CONTACT AEG HS7K.01**  
 10A  
 1 normally closed contact



FRIMA 3028.0561

**3351217 CONTACTOR AEG LS7K 18A 230V 7.5Kw**  
 coil 230V 50/60Hz  
 3 normally open contacts  
 1 normally closed auxiliary contact



FRIMA 30280508

FRIMA 30280552

FRIMA 30280557

**3351218 CONTACTOR AEG LS7K 18A 230V 7.5Kw**  
 coil 230V 50/60Hz  
 3 normally open contacts  
 1 normally open auxiliary contact



FRIMA 30280509

**3351219 CONTACTOR AEG LS7K 18A 230V 7.5Kw**  
 coil 230V 50/60Hz  
 4 normally open contacts  
 no auxiliary contact



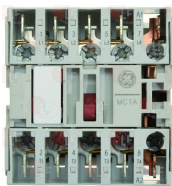
FRIMA 30280517

**5021314 AUXILIARY CONTACT AEG HS8.K11**  
 1 contact NO  
 1 contact NC



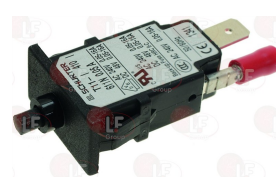
FRIMA

**7108794 CONTACTOR GENERAL ELECTRIC MC1A400AH-M**  
 4Kw 400V - coil 230V 50/60Hz  
 4 contacts NO



FRIMA 4000451

**3397404 THERMAL T11-410 0.05A 240V**



FRIMA 1010670

FRIMA 30140400

FRIMA 30140402

## Detergents

**2110965 DETERGENT FOR OVEN CLEANJET 10 L**  
 for the care of the cleaning system  
 for the cleaning of the cooking chamber  
 please see the attached documentation for use



FRIMA 90060136

**5034647 DETERGENT SCALE REMOVER OVEN 10 L**  
 for the cleaning of the cooking chamber  
 please see the attached documentation for use



FRIMA 60060110



Suitable for:

# FRIMA



**5059773 DETERGENT TABLETS FOR OVEN**  
150 tablet jar - total weight 6 kg  
please see the attached documentation for use



FRIMA 5600562

**3092240 OVEN CLEANING TABLETS**  
100 tablets jar - total weight 6 kg  
please see the attached documentation for use



FRIMA 5000012

FRIMA 5600210

**3092241 OVEN RINSE AID CLEANING TABLETS**  
50 tablet jar - total weight 3 kg  
please see the attached documentation for use



FRIMA 5600211

**2110966 RINSE AID OVEN CLEANJET 10 L**  
for the care of the cleaning system  
please see the attached documentation for use



FRIMA 81985

FRIMA 90060137

## Door glasses for oven and accessories

**7107353 GLASS INNER OVEN DOOR 508x485 mm**



FRIMA 2400163

**5044928 GLASS INNER OVEN DOOR 575x495 mm**



FRIMA 84741336

**5037759 GLASS INNER OVEN DOOR 765x680 mm**



FRIMA 2400200

**7103744 GLASS INNER OVEN DOOR 768x485 mm**



FRIMA 2400164

**7109072 GLASS INTERNAL OVEN DOOR 1340x485 mm**



FRIMA 2400210

**5033931 STOPPER DOOR ø 13 mm**



FRIMA 20390402



## Drain pumps

**5037766 DRAIN ELECTRIC PUMP DPS35-038 47W**  
200/240V 50/60Hz 0.5A  
inlet external  $\varnothing$  24 mm - outlet external  $\varnothing$  24 mm



FRIMA 8700352

**3122777 DRAIN ELECTRIC PUMP HANNING DPS25R**  
43W 200/240V 50/60Hz 0.4A FZ98  
inlet external  $\varnothing$  30 mm - outlet external  $\varnothing$  24 mm

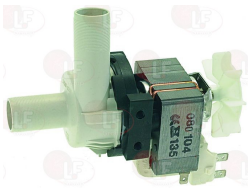


FRIMA 1003334  
FRIMA 4400207

FRIMA 30021005  
FRIMA 4400207P

FRIMA 30021005P

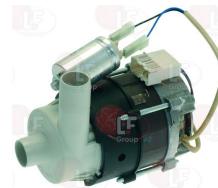
**3122402 DRAIN ELECTRO-PUMP 80W 230V 50Hz**  
inlet external  $\varnothing$  24 mm - outlet external  $\varnothing$  24 mm



FRIMA 30021000

FRIMA 30021000P

**3122745 DRAIN ELECTROPUMP UP30-890**  
100W 230V 50/60Hz-capacitor 2.5  $\mu$ f  
inlet external  $\varnothing$  24 mm - outlet external  $\varnothing$  24 mm

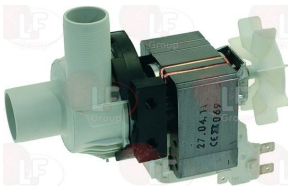


FRIMA 5600153

FRIMA 5600153P

FRIMA 5600185

**3122404 DRAIN PUMP HANNING BE28B4-178**  
external inlet  $\varnothing$  30 mm - external outlet  $\varnothing$  24 mm  
100W 230V 50Hz



FRIMA 30021000

FRIMA 30021000P

**5053618 ELECTROPUMP DRAIN HANNING DPS35-037**  
42/47W 200/240V 50/60Hz 0.5/0.4A  
inlet external  $\varnothing$  24 mm - outlet external  $\varnothing$  24 mm



FRIMA 8700353

**5040143 KIT DRAIN ELECTROPUMP UP30-890**  
complete with bracket and support  
100W 230V 50/60Hz - capacitor 2.5  $\mu$ f  
inlet external  $\varnothing$  24 mm - outlet external  $\varnothing$  24 mm



FRIMA 5600186

FRIMA 8700437

## Drip trays for kitchens and ovens

**5049973 CLIP DRIP TRAY - 5 PIECES**



FRIMA 1003531

FRIMA 5000296

FRIMA 5000296P

**5015678 DEVICE TRAY OPENING**  
external dimensions 65x35 mm



FRIMA 27601540





Suitable for:

# FRIMA



Suitable for:

**5042382 DRIP TRAY ASSEMBLY**  
dimensions 467x155x55 mm



FRIMA 84551315

FRIMA 84551481

**5030376 DRIP TRAY 540x65x18 mm**



FRIMA 5000286

**5049973 CLIP DRIP TRAY - 5 PIECES**



FRIMA 1003531

FRIMA 5000296

FRIMA 5000296P

**3015043 DRIP TRAY 548x23x22 mm**



FRIMA 84741377

**5039351 DRIP TRAY 745x65x18 mm**



FRIMA 5000300

## Electrical gas valves and accessories

**3526102 ELECTRIC COUPLING WITH CABLE**  
for VALVE 820 NOVA-824 NOVASIT-822 NOVA-826 NOVA



FRIMA 30390205

**7107614 KIT VALVE GB-ND 055 D01 S02  $\phi$  1/2"FF**  
complete with fan, valve housing and flange  
inlet  $\phi$  1/2" F - outlet  $\phi$  1/2" F  
power supply 230V 50/60Hz



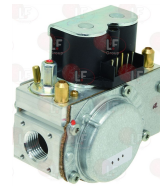
FRIMA 7000033

**5064515 KIT VALVE GB-WND055 D01 S02RH  $\phi$  1/2" F**  
complete with fan, valve housing and flange  
inlet  $\phi$  1/2" F  
power supply 230V 50/60Hz



FRIMA 7000029

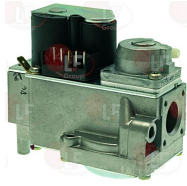
**5052975 VALVE GB-ND 055 D01 S22  $\phi$  1/2" FF**  
inlet  $\phi$  1/2" F - outlet  $\phi$  1/2" F  
power supply 230V 50/60Hz



FRIMA 7000220

Suitable for:

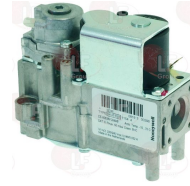
**3526181 VALVE VK4105C HONEYWELL  $\varnothing$  1/2"**  
 inlet-outlet  $\varnothing$  1/2" unthreaded  
 maximum gas inlet pressure 60 mbar  
 room temperature  $-15 \div 60^{\circ}\text{C}$   
 power supply 220/240V 50Hz



FRIMA 30390241

Suitable for:

**3526219 VALVE VK4115V HONEYWELL  $\varnothing$  18 mm**  
 inlet-outlet  $\varnothing$  18 mm unthreaded  
 maximum gas inlet pressure 60 mbar  
 room temperature  $-15 \div 70^{\circ}\text{C}$   
 power supply 220/240V 50Hz



FRIMA 30390245

FRIMA 30390245P

**2110027 VALVE 827 NOVA  $\varnothing$  1/2" FF**  
 inlet  $\varnothing$  1/2" F - outlet  $\varnothing$  1/2" F  
 maximum gas inlet pressure 60 mbar  
 outlet pressure calibration field  
 $2 \div 20$  mbar  
 ambient temperature  $0 \div 60^{\circ}\text{C}$   
 power supply 220/240V 50Hz



FRIMA 30390220

FRIMA 87201419

## Electronic boxes

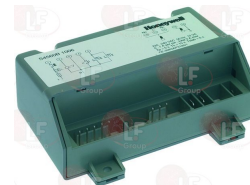
**5039267 CONTROL BOX ARGUS 070-R1**  
 complete with cables  
 230V  
 per FORNO SCC 61/62/101/102/201/202 G



FRIMA 7400221

FRIMA 8700577

**3091017 CONTROL BOX S4560B1006**  
 model HONEYWELL - 220/240V 50Hz 10VA



FRIMA 30390103

**3091032 CONTROL BOX S4565BD1064**  
 model HONEYWELL - 220/240V 50/60Hz 4VA



FRIMA 30390107

FRIMA 30390107P

**3526403 CONTROL BOX S4565C1033U**  
 model HONEYWELL- 230V 50/60Hz 4VA  
 for 6-20 grills



FRIMA 30390105



Suitable for:

# FRIMA



Suitable for:

## Electronic controllers

- 3445375 CONTROLLER ELIWELL ID PLUS 902**  
 230V 50/60Hz  
 1 relay output 8A for compressor  
 1 selectable NTC/PTC/PT1000 probe (not included)  
 1 programmable digital/temperature input  
 TTL input for copy card connection  
 front dimension 74x32xdepth 59 mm  
 mounting hole 71x29 mm



FRIMA 4001360

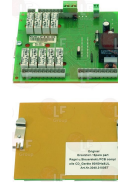
## Electronic printed-circuit boards

- 5038172 BOARD CONNECTING CABLE 1300 mm**



FRIMA 4000472

- 3390234 BYPASS BOARD 150x125 mm**



FRIMA 1004933  
FRIMA 30402060

FRIMA 30020400  
FRIMA 30403100

FRIMA 30020408  
FRIMA 30403100ET

- 5052389 CABLE BOARD CONNECTION 1000 mm**



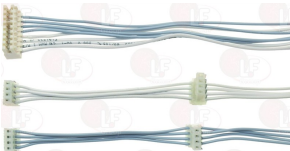
FRIMA 4004377

- 5068315 CIRCUIT BOARD MOTOR 110x135x133 mm**



FRIMA 30403041

- 7150228 CONNECTING CABLE FOR BOARD 1460 mm**



FRIMA 4000235

- 7150229 CONNECTING CABLE FOR BOARD 550 mm**



FRIMA 87201300

- 5038105 CONNECTING CABLE FOR BOARD 800 mm**



FRIMA 4000471

- 7109280 CONNECTING CABLE FOR BOARD 800 mm**



FRIMA 88171040

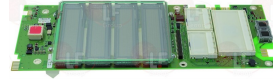


Suitable for:

Suitable for:

**5065361 CONNECTING CABLE PRESSURE SWITCH 740 mm**

**3390310 CONTROL PC BOARD 340x130 mm**



FRIMA 4000207

FRIMA 4200002

FRIMA 4200002P

**5015686 CONTROL PC BOARD 455x155 mm**  
three D-shaped pins  $\varnothing$  6x4.6 mm

**5022004 CONTROL PC BOARD 460x120 mm**  
three D-shaped pins  $\varnothing$  6x4.6 mm



FRIMA 30403210

FRIMA 30402030

**3390233 CONTROL PC BOARD 460x155 mm**

**5026382 ELECTRONIC BOARD DISPLAY 375x120 mm**  
two D-shaft pins  $\varnothing$  6x4.6 mm



FRIMA 30403020

FRIMA 4200047

FRIMA 4200047P

FRIMA 4200048

**3390319 KIT ELECTRONIC DISPLAY BOARD 375x120mm**  
complete with lead and control box

**3390238 MOTHERBOARD 280x110 mm**



FRIMA 4200004

FRIMA 4200004P

FRIMA 8700139

FRIMA 30400276

FRIMA 30403000

FRIMA 30403001

FRIMA 30403001ET

FRIMA 30403001ET+...

**3390236 MOTOR ELECTRONIC BOARD 110x135x133 mm**

**5061173 PANEL ELECTRONIC DISPLAY 152x125 mm**



FRIMA 30403040

FRIMA 30403040P

FRIMA 4200067

**7110737 PCB KEYBOARD 400x120 mm**  
two D-shaped pins  $\varnothing$  6x4.6 mm

**5049379 PCB KEYBOARD 430x165 mm**  
three D-shaped pins  $\varnothing$  6x4.6 mm



FRIMA 4200090P

FRIMA 30402051



Suitable for:

**3390235** PCB KEYBOARD 455x155 mm  
three D-shaped pins  $\varnothing$  6x4.6 mm



FRIMA 30403010

Suitable for:

**7106470** PCB KEYBOARD 460x120 mm  
three D-shaped pins  $\varnothing$  6x4.6 mm



FRIMA 30400110

**3390380** RELAY ELECTRONIC BOARD 155x145 mm  
with protection screen



FRIMA 4000049

FRIMA 4200045

FRIMA 4200064P

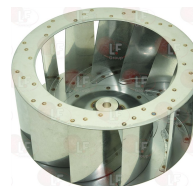
## Fans for motors

**5050341** FAN  $\varnothing$  180 mm  
thickness 20 mm  
number of blades 12 - hole  $\varnothing$  20 mm



FRIMA 30010804

**5023022** FAN  $\varnothing$  280 mm  
thickness 125 mm  
number of blades 12 - tapered hole  $\varnothing$  11-16 mm



FRIMA 20120602

**5037758** FAN  $\varnothing$  340 mm  
thickness 130 mm  
number of blades 9 - tapered hole  $\varnothing$  13-16 mm



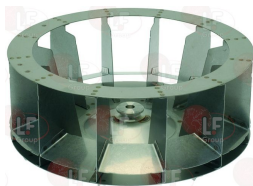
FRIMA 2200192

**5044377** FAN  $\varnothing$  340 mm  
thickness 95 mm  
number of blades 9 - tapered hole  $\varnothing$  13-16 mm



FRIMA 2200188

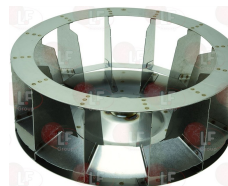
**3240757** FAN  $\varnothing$  350 mm  
thickness 135 mm  
total blades 12 -  $\varnothing$  tapered hole 13-16.5 mm



FRIMA 1012741

FRIMA 20120512

**5014685** FAN  $\varnothing$  350 mm  
thickness 125 mm  
number of blades 12 - conical hole  $\varnothing$  13-16 mm



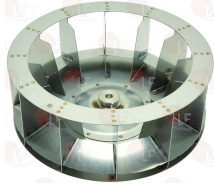
FRIMA 20120507





Suitable for:

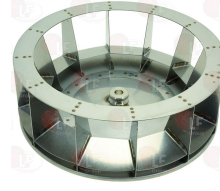
**7106118 FAN ø 350 mm**  
 thickness 125 mm  
 number of blades 12 - tapered hole ø 13-16 mm



FRIMA 20120900

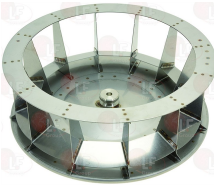
Suitable for:

**5035669 FAN ø 450 mm**  
 thickness 155 mm  
 number of blades 12 - hole ø 19.5 mm



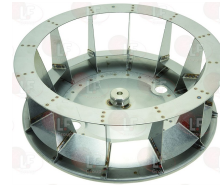
FRIMA 20120901

**5037083 FAN ø 450 mm**  
 thickness 165 mm  
 number of blades 12 - tapered hole ø 14-17 mm



FRIMA 20120513

**7104102 FAN ø 450 mm**  
 thickness 155 mm  
 number of blades 12 - tapered hole ø 13.5-17 mm



FRIMA 20120508

## Feet

**3313016 ADJUSTABLE S/STEEL FOOT ø 1" x h 80 mm**  
 with plastic support for tubular foot 40x40 mm  
 adjustable height 23÷58 mm  
 max load 400 Kg



FRIMA 20390111

## Filters

**3160348 AIR INLET FILTER 212x60 mm**



FRIMA 20390337

FRIMA 52141300

FRIMA 84551377

**3160501 AIR INLET FILTER 220x50 mm**



FRIMA 1600673

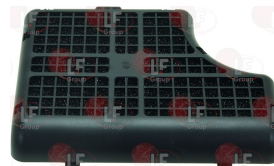
FRIMA 1601662

**5057567 FILTER DRAIN STAINLESS STEEL ø 97 mm**



FRIMA 20050308

**7104504 FILTER FAN 180x140x22 mm**



FRIMA 4002684



Suitable for:

# FRIMA



Suitable for:

**3160349 STAINLESS STEEL DRAIN FILTER  $\varnothing$  72 mm**



FRIMA 20050302

FRIMA 20050307

## Fittings

**5014737 CONNECTION QUICK FOR CLEANING SYSTEM**  
thread  $\varnothing$  3/4" M - hose-end fitting  $\varnothing$  7 mm



FRIMA 20620349

**5052790 COUPLING QUICK FOR CLEANING SYSTEM**  
thread  $\varnothing$  1/4" M - hose end fitting  $\varnothing$  7 mm



FRIMA 20620347

**3349624 ELBOW FITTING 1/8" M  $\varnothing$  6 mm**



FRIMA 20620339

**5027917 FITTING 2 WAYS 3/4" F - 3/4" M**  
complete with gaskets



FRIMA 5000070

**5070750 FITTING 2 WAYS 3/4" F - 3/4" M**  
complete with gaskets



FRIMA 5000071

**5021113 FITTING 3 WAYS 3/4" F - 1/2" M - 3/4" M**  
complete with gaskets



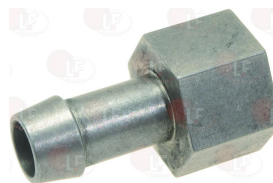
FRIMA 86641300

**5021114 FITTING 3 WAYS 3/4" F - 3/4" M - 3/4" F**  
complete with gaskets



FRIMA 86641301

**7110751 HOSE END FITTING  $\varnothing$  3/8" F  $\varnothing$  12 mm**



FRIMA 4400592



## Fuses

**2111942 CLAMP FUSEHOLDER  $\varnothing$  5x20 mm**  
250V 10A  
for cable 10 mmq



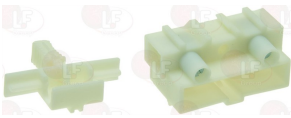
FRIMA 40011228

**5009195 CLAMP FUSEHOLDER  $\varnothing$  5x30 mm**  
for cable 4 mmq



FRIMA 40011247

**5037866 CLAMP FUSEHOLDER  $\varnothing$  5x30 mm**  
250V 10A



FRIMA 40011295

**3049020 DELAY FUSE  $\varnothing$  5x20 mm - 10 PCS**  
250V 6.3A



FRIMA 30190200

**3049065 DELAY FUSE  $\varnothing$  6.3x32 mm - 10 PCS**  
250V 6.3A



FRIMA 40010224

**5038283 FUSE NEOZED 400 V 25A**



FRIMA 30190402

**5047306 FUSE NEOZED 400V 16A**



FRIMA 30190401

**7105361 FUSE NEOZED 400V 35A**



FRIMA 30190403

**7108747 FUSE NEOZED 400V 50A**



FRIMA 30190404

**7110896 FUSEHOLDER 3 POLE**



FRIMA 40011234



Suitable for:

# FRIMA



**5045942 KIT FUSE NEOZED 400V 63A - 10 PCS**



FRIMA 30190405

Suitable for:

**3049049 QUICK ACTING FUSE  $\varnothing$  5x20 mm - 10 PCS  
250V 2A**



FRIMA 30190120

**3049052 QUICK ACTING FUSE  $\varnothing$  5x20 mm - 10 PCS  
250V 4A**



FRIMA 30190112

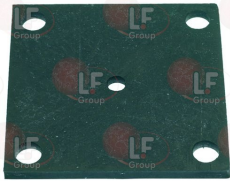
**3049034 QUICK ACTING FUSE  $\varnothing$  6.3x32 mm - 10 PCS  
500V 10A**



FRIMA 40010225

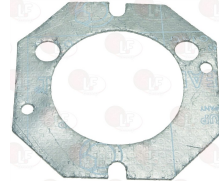
## Gaskets and seals

**3786496 BOILER LEVEL GASKET 70x70x4 mm**



FRIMA 50120537

**7150235 GASKET BURNER 100x100x1 mm**



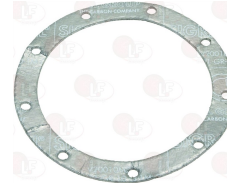
FRIMA 51101318

**5014739 GASKET DRIP TRAY**  
external dimensions 24x18x7 mm



FRIMA 20390339

**7104109 GASKET FLANGE BURNER**  
external  $\varnothing$  132 mm  
internal  $\varnothing$  105 mm  
thickness 2 mm



FRIMA 51101311

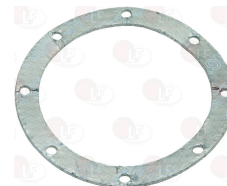
**3786514 GASKET FOR CONTROL PANEL 590x185 mm**  
adhesive  
with fastening clips



FRIMA 1600386

FRIMA 1600387

**5054998 GASKET FOR EXCHANGER**  
 $\varnothing$  external 132 mm  
 $\varnothing$  internal 104 mm  
thickness 2 mm



FRIMA 7400296

Suitable for:

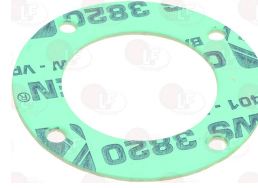
**5069041 GASKET FOR FAN**  
external dimensions 83x76 mm



FRIMA 51101322

Suitable for:

**7109932 GASKET FOR MOTOR FAN**  
external  $\varnothing$  82 mm - internal  $\varnothing$  50 mm  
thickness 2 mm



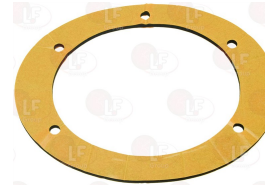
FRIMA 7000242

**7109933 GASKET FOR MOTORFAN**  
external dimensions 68x43 mm



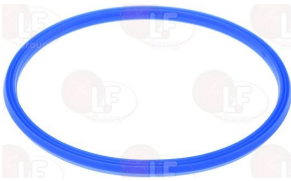
FRIMA 7400301

**7105173 GASKET FOR OVEN SHOWER SUPPORT**  
external  $\varnothing$  170 mm - internal  $\varnothing$  120 mm  
thickness 3 mm



FRIMA 5000290

**5035145 GASKET FOR OVEN STEAM GENERATOR**  
 $\varnothing$  external 145 mm -  $\varnothing$  internal 130 mm  
thickness 7 mm



FRIMA 50120566

**5039266 GASKET FOR SPARKING PLUG**  
external dimensions 27x17 mm  
internal  $\varnothing$  10 mm - holes  $\varnothing$  4.5 mm



FRIMA 7400290

**3786287 GASKET FOR SPARKING PLUG 39x18 mm**



FRIMA 4400250

**7102798 GASKET LEVEL PROBE FLANGE**  
external dimensions 180x90 mm  
internal dimensions 143x53 mm



FRIMA 51101308

**7104139 GASKET OVEN STEAM GENERATOR**  
external dimensions 77x77 mm



FRIMA 51101339

**7100510 GASKET RUBBER**  
external  $\varnothing$  58 mm - internal  $\varnothing$  42 mm - thickness 4 mm



FRIMA 20700020





Suitable for:

# FRIMA



**1786231 GUARNIZIONE PIANA EPDM  $\varnothing$  24x15x3 mm**  
for water inlet tap



FRIMA 51101024

Suitable for:

**3186491 HEATING ELEMENT GASKET**  
external dimensions 82x82 mm



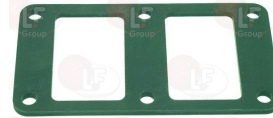
FRIMA 51101003

**3186492 HEATING ELEMENT GASKET**  
external dimensions 209x45 mm



FRIMA 51101009

**3186493 HEATING ELEMENT GASKET**  
external dimensions 146x83 mm



FRIMA 51101200

**3186757 HEATING ELEMENT GASKET**  
external dimensions 125x103 mm



FRIMA 4400279

**3786136 HEATING ELEMENT GASKET**  
external dimensions 80x82 mm



FRIMA 4400280

**3786497 MOTOR SHAFT GASKET**



FRIMA 50020300

FRIMA 50020301

**3786614 OVEN LAMP RECEPTACLE GASKET**  
dimensions 48x41x3 mm



FRIMA 50120535

## Gaskets for oven door

**3786360 CARRIAGE STOP GASKET 460x160 mm**  
made of silicone elastomer - 3 sides  
profile dimensions 35x23 mm  
COLOUR BLACK



FRIMA 51051009

FRIMA 51051015

**3786470 CARRIAGE STOP GASKET 665x160 mm**  
out of silicone elastomer - 3 sides  
profile size 32x25 mm  
COLOUR BLACK



FRIMA 51051010

Suitable for:

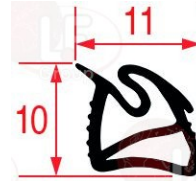
**7101416 GASKET CONTROL PANEL 2000 mm**  
sided foam tape  
profile dimensions 7x5 mm  
COLOUR: BLACK



FRIMA 51051011

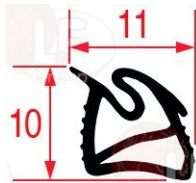
Suitable for:

**3786785 GASKET CONTROL PANEL 2200 mm**  
made of silicone elastomer  
profile dimensions 10x11 mm  
COLOUR: BLACK



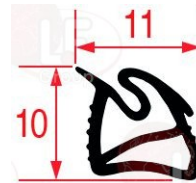
FRIMA 51051012

**3786786 GASKET CONTROL PANEL 3800 mm**  
made of silicone elastomer  
profile dimensions 10x11 mm  
COLOUR: BLACK



FRIMA 51051014

**3786784 GASKET CONTROL PANEL 720x305 mm**  
made of silicone elastomer - 3 sides  
profile dimensions 10x11 mm  
COLOUR: BLACK



FRIMA 51051011

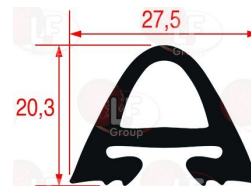
**5012472 GASKET OVEN DOOR 1410x520 mm**  
made of silicone elastomer  
profile dimensions 20.3x27.5 mm  
COLOUR: BLACK



FRIMA 1013498

FRIMA 51051007

**5012474 GASKET OVEN DOOR 1410x720 mm**  
made of silicone elastomer  
profile dimensions 20.3x27.5 mm  
COLOUR: BLACK



FRIMA 51051008

**3586001 GASKET OVEN DOOR 500x470 mm**  
MODEL "SUPERFLEX"  
out of silicone elastomer  
profile dimensions 28.5x13 mm  
COLOUR: BLACK



FRIMA 2000394

FRIMA 2000394P

FRIMA 2001800P

**3586002 GASKET OVEN DOOR 760x470 mm**  
MODEL "SUPERFLEX"  
out of silicone elastomer  
profile dimensions 28.5x13 mm  
COLOUR: BLACK



FRIMA 2000396

FRIMA 2001802P

**5060671 GASKET OVEN DOOR 815x710 mm**  
made of silicone elastomer  
profile dimensions 20.3x27.5 mm  
COLOUR: BLACK



FRIMA 51101047

**3786782 GASKET OVEN GLASS 1275x430 mm**  
made of silicone elastomer  
profile dimensions 15.5x11.5 mm  
COLOUR: BLACK



FRIMA 51051005

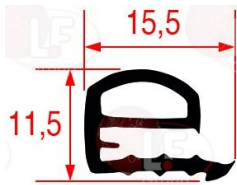


Suitable for:

# FRIMA



**3786783 GASKET OVEN GLASS 1275x635 m m**  
 made of silicone elastomer  
 profile dimensions 15.5x11.5 mm  
 COLOUR: BLACK



FRIMA 51051006

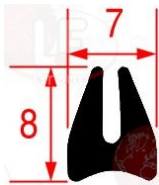
Suitable for:

**5015818 GASKET OVEN GLASS 2800 mm**  
 made of silicone elastomer  
 profile dimensions 8x7 mm  
 COLORE GRIGIO



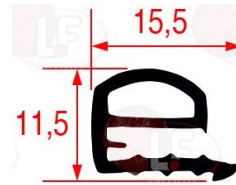
FRIMA 50120201

**5044817 GASKET OVEN GLASS 3800 mm**  
 made of silicone elastomer  
 profile dimensions 8x7 mm  
 COLORE GRIGIO



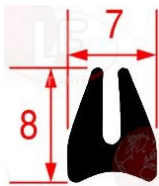
FRIMA 50120202

**5056555 GASKET OVEN GLASS 480x425 mm**  
 made of silicone elastomer  
 profile dimensions 15.5x11.5 mm  
 COLOUR: BLACK



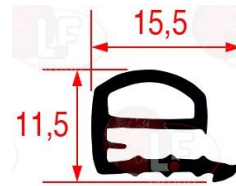
FRIMA 51051000

**2110900 GASKET OVEN GLASS 5400 mm**  
 made of elastomero siliconico  
 profile dimensions 8x7 mm  
 COLORE GRIGIO



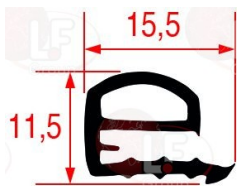
FRIMA 50120203

**3786781 GASKET OVEN GLASS 715x600 mm**  
 made of silicone elastomer  
 profile dimensions 15.5x11.5 mm  
 COLOUR: BLACK



FRIMA 51051017

**2111027 GASKET OVEN GLASS 745x430 mm**  
 made of silicone elastomer  
 dimensions profile 15.5x11.5 mm  
 COLOUR: BLACK



FRIMA 51051003

**5038338 GASKET OVEN 680 mm**  
 made of silicone elastomer  
 profile dimensions 15x6 mm  
 COLOUR: BLACK



FRIMA 2400701

**3786508 OVEN CARRIAGE GASKET 565 mm**  
 made of silicone elastomer  
 profile dimensions 52x13 mm  
 COLOUR BLACK



FRIMA 2400187

**3186482 OVEN CARRIAGE GASKET 610 mm**  
 made of silicone elastomer  
 profile dimensions 60x12 mm  
 COLOUR BLACK



FRIMA 1003278

FRIMA 51051025

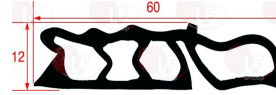


Suitable for:

Suitable for:

**3786503 OVEN CARRIAGE GASKET 775 m m**  
made of silicone elastomer  
profile dimensions 52x13 mm  
COLOUR BLACK

**3786495 OVEN CARRIAGE GASKET 825 m m**  
out of silicone elastomer  
profile dimensions 60x12 mm  
COLOUR BLUE

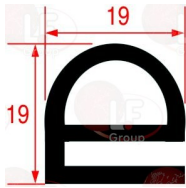


FRIMA 2400194

FRIMA 51051026

**3286006 OVEN DOOR GASKET - 25 m**  
made of silicone elastomer  
profile dimensions 19x19 mm  
BLACK COLOR

**3286024 OVEN DOOR GASKET - 25 m**  
made of silicone elastomer  
profile dimensions 25x12 mm  
COLOUR BROWN



FRIMA 50120700

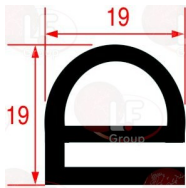
FRIMA 50120701

FRIMA 50120702

FRIMA

**3286077 OVEN DOOR GASKET - 3 m**  
made of silicone elastomer  
profile dimensions 19x19 mm  
BLACK COLOUR

**3286083 OVEN DOOR GASKET - 3 m**  
made of silicone elastomer  
profile dimensions 25x12 mm  
COLOUR BROWN



FRIMA 50120700

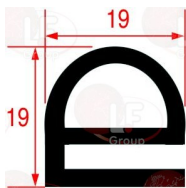
FRIMA 50120701

FRIMA 50120702

FRIMA

**3286005 OVEN DOOR GASKET - 6 m**  
made of silicone elastomer  
profile dimensions 19x19 mm  
BLACK COLOR

**3286023 OVEN DOOR GASKET - 6 m**  
made of silicone elastomer  
profile dimensions 25x12 mm  
COLOUR BROWN



FRIMA 50120700

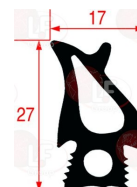
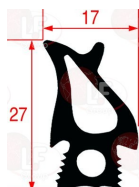
FRIMA 50120701

FRIMA 50120702

FRIMA

**3786021 OVEN DOOR GASKET 1475x475 m m**  
made of silicone elastomer  
profile dimensions 27x17 mm  
COLOUR BLACK

**3786022 OVEN DOOR GASKET 1475x670 m m**  
made of silicone elastomer  
profile dimensions 27x17 mm  
COLOUR BLACK



FRIMA 2000398

FRIMA 2000398P

FRIMA 2000399

FRIMA 2000399P



Suitable for:

# FRIMA



**3186481 OVEN DOOR GASKET 1500x480 m m**  
made of silicone elastomer  
profile dimensions 31x15 mm  
COLOUR BLACK



FRIMA 51051023

FRIMA 51051023P

Suitable for:

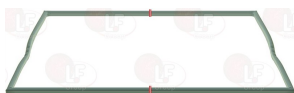
**3786016 OVEN DOOR GASKET 1505x695 m m**  
made of silicone elastomer  
profile dimensions 31x15 mm  
COLOUR BLACK



FRIMA 51051024

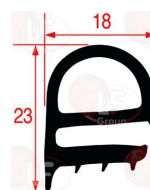
FRIMA 51051024P

**7150213 OVEN DOOR GASKET 1582x565 m m**  
made of silicone elastomer  
GRAY COLOUR



FRIMA 2400490

**3186156 OVEN DOOR GASKET 485x470 m m**  
made of silicone elastomer  
profile dimensions 23x18 mm  
COLOUR BLACK



FRIMA 50120703

**3786674 OVEN DOOR GASKET 500x470 m m**  
made of silicone elastomer  
profile dimensions 28.5x13 mm  
COLOUR BLACK

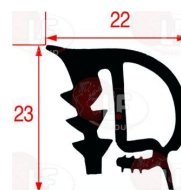


FRIMA 2000394

FRIMA 2000394P

FRIMA 2001800P

**3786243 OVEN DOOR GASKET 520x470 m m**  
made of silicone elastomer  
profile dimensions 23x22 mm  
COLOUR BLACK



FRIMA 51051001

**3186319 OVEN DOOR GASKET 530x473 m m**  
made of silicone elastomer  
profile dimensions 31x15 mm  
COLOUR BLACK  
for Convection oven (FRIMA) FCD6



FRIMA 51051020

FRIMA 51051020P

**3786675 OVEN DOOR GASKET 680x500 m m**  
made of silicone elastomer  
profile dimensions 28.5x13 mm  
COLOUR BLACK



FRIMA 2000395

FRIMA 2000395P

FRIMA 2001801P

**3186155 OVEN DOOR GASKET 720x485 m m**  
made of silicone elastomer  
profile dimensions 23x18 mm  
COLOUR BLACK



FRIMA 50120704

FRIMA 50120705

**3786676 OVEN DOOR GASKET 760x470 m m**  
made of silicone elastomer  
profile dimensions 28.5x13 mm  
COLOUR BLACK



FRIMA 2000396

FRIMA 2001802P





Suitable for:

Suitable for:

**3786677 OVEN DOOR GASKET 760x675 m m**  
 made of silicone elastomer  
 profile dimensions 28.5x13 mm  
 COLOUR BLACK



FRIMA 2000397

FRIMA 2000397P

FRIMA 2001803P

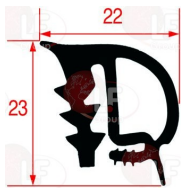
**3186426 OVEN DOOR GASKET 780x470 m m**  
 made of silicone elastomer  
 profile dimensions 31x15 mm  
 COLOUR BLACK  
 for Convection oven electric (FRIMA) FCP101



FRIMA 51051021

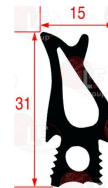
FRIMA 51051021P

**3186427 OVEN DOOR GASKET 785x470 m m**  
 made of silicone elastomer  
 profile dimensions 23x22 mm  
 COLOUR BLACK



FRIMA 51051004

**3786015 OVEN DOOR GASKET 807x690 m m**  
 made of silicone elastomer  
 profile dimensions 31x15 mm  
 COLOUR BLACK



FRIMA 51051022

FRIMA 51051022P

**3286026 OVEN DRAWER GASKET - 21 m**  
 made of silicone elastomer  
 profile dimensions 26x19 mm  
 COLOUR BROWN



FRIMA 50120504

FRIMA 50120550

FRIMA 50120551

**3286025 OVEN DRAWER GASKET - 7 m**  
 made of silicone elastomer  
 profile dimensions 26x19 mm  
 COLOUR BROWN

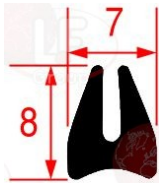


FRIMA 50120504

FRIMA 50120550

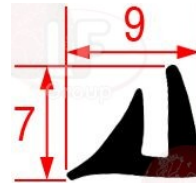
FRIMA 50120551

**3786623 OVEN GLASS GASKET**  
 made of silicone elastomer  
 profile dimensions 8x7 mm  
 COLOUR GREY  
 SOLD PER METRE



FRIMA 50120200

**3286048 OVEN GLASS GASKET - 25 m**  
 made of silicone elastomer  
 profile dimensions 9x7 mm  
 COLOUR BLACK



FRIMA 50120200



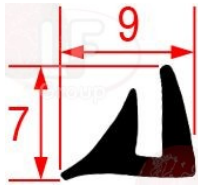
Suitable for:

# FRIMA



Suitable for:

**3286047 OVEN GLASS GASKET - 6 m**  
made of silicone elastomer  
profile dimensions 9x7 mm  
COLOUR BLACK



FRIMA 20120200

FRIMA 20120200-21MT

FRIMA 50120200

## Gearmotors

**5049382 GEARMOTOR 22N28210E 24V**  
shaft  $\varnothing$  5 mm  
external dimensions 50x32x51 mm



FRIMA 31011001

**5065207 GEARMOTOR 82841056 24V**  
5000rpm  
pin  $\varnothing$  4 mm



FRIMA 31011007

**3340149 HUMIDITY CONTROL MOTOR 12V**  
pin  $\varnothing$  4 mm



FRIMA 31011010

## Glues

**3392003 RED SILICONE SUPERSIL 60 ml**  
temperature max +350°C  
STRONG ADHESION  
excellent for the sealing of parts exposed to  
high temperatures, OVENS, MOTORS, STOVES, BOILERS  
suitable as sealer for OVEN GASKETS



FRIMA 50060200

FRIMA 50060207



## Handles

**3242090** BASE FOR DOOR HANDLE  
for OVEN



FRIMA 20160605

**3242481** BRACKET FOR DOOR HANDLE STRIKE  
mounting distance 46 mm  
for OVEN



FRIMA 2400141

**3242317** CLOSING DEVICE FOR DOOR HANDLE  
for OVEN



FRIMA 20161452

**3242471** COMPLETE OVEN DOOR HANDLE



FRIMA 20161412

FRIMA 20161450

**3242090** BASE FOR DOOR HANDLE  
for OVEN



FRIMA 20160605

**3242317** CLOSING DEVICE FOR DOOR HANDLE  
for OVEN



FRIMA 20161452

**3242320** DOOR CLOSING PLATE  
distance between mounting holes 68 mm  
for OVEN



FRIMA 20161300

**3242316** OVEN DOOR CLOSING SUPPORT  
distance between mounting holes 32-90 mm  
for OVEN



FRIMA 20161457

**3242466** PLASTIC RING  $\varnothing$  56x40x2 mm  
for OVEN



FRIMA 20161453



Suitable for:

**3242318 STRIKE FOR DOOR HANDLE**  
distance between mounting holes 68 mm  
for OVEN



FRIMA 20160604

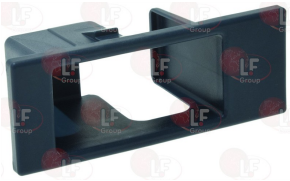
**3242472 COMPLETE OVEN DOOR HANDLE**



FRIMA 20161500

FRIMA 20161504

**7103779 HOOKING HANDLE OVEN DOOR 90x35x40mm**



FRIMA 20390340

**3242312 STRIKE FOR OVEN HANDLE**  
distance between mounting holes 15 mm



FRIMA 20160610

**3242473 COMPLETE OVEN DOOR HANDLE**



FRIMA 20161501

FRIMA 20161507

FRIMA 20161509

# FRIMA



Suitable for:

**3242241 STRIKE FOR OVEN RIGHT HANDLE**  
distance between mounting holes 67 mm  
for OVEN



FRIMA 20160603

**3242476 DOOR HANDLE PIN 47 mm**  
for OVEN

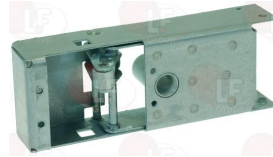


FRIMA 1003323

FRIMA 29401312

FRIMA 29401314

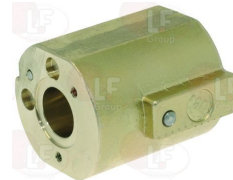
**3242475 OVEN DOOR LOCK**  
for OVEN



FRIMA 1003536

FRIMA 84741300

**3242474 OVEN DOOR LOCK**  
for OVEN



FRIMA 84741019

FRIMA 84741305

FRIMA 84741410



Suitable for:

**3242477 STRIKE FOR DOOR HANDLE**  
distance between mounting holes 52 mm  
for OVEN



FRIMA 1003540

FRIMA 85141307

# FRIMA



Suitable for:

**3242479 COMPLETE OVEN DOOR HANDLE**



FRIMA 2400152

**3242480 DOOR HANDLE INTERNAL HINGE UNIT**  
for OVEN



FRIMA 2400176

FRIMA 2402762

**3242482 PIN FOR OVEN DOOR HANDLE 43 mm**  
for OVEN



FRIMA 2400142

**3242483 COMPLETE OVEN DOOR HANDLE**



FRIMA 2400136

**3242481 BRACKET FOR DOOR HANDLE STRIKE**  
mounting distance 46 mm  
for OVEN



FRIMA 2400141

**3242465 DOOR HANDLE SPRING**  
for OVEN



FRIMA 2400506

FRIMA 2401100

FRIMA 2402761

**3242464 PLATE FOR DOOR HANDLE LOCK**



FRIMA 2400504

**3242484 COVER FOR DOOR MECHANISM**



FRIMA 2400216



Suitable for:

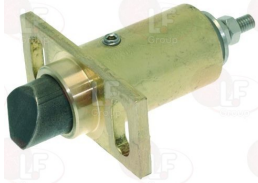
**3242478 LOCK CLAMP FOR OVEN DOOR**  
for OVEN



FRIMA 1010833

FRIMA 29401305

**3242477 STRIKE FOR DOOR HANDLE**  
distance between mounting holes 52 mm  
for OVEN



FRIMA 1003540

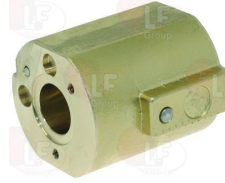
FRIMA 85141307

# FRIMA



Suitable for:

**3242474 OVEN DOOR LOCK**  
for OVEN



FRIMA 84741019

FRIMA 84741305

FRIMA 84741410

**3242604 COVER FOR DOOR LOCK**  
for OVEN



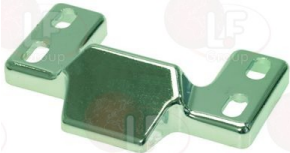
FRIMA 27601049

**3242484 COVER FOR DOOR MECHANISM**



FRIMA 2400216

**3242320 DOOR CLOSING PLATE**  
distance between mounting holes 68 mm  
for OVEN



FRIMA 20161300

**3242480 DOOR HANDLE INTERNAL HINGE UNIT**  
for OVEN



FRIMA 2400176

FRIMA 2402762

**3242476 DOOR HANDLE PIN 47 mm**  
for OVEN



FRIMA 1003323

FRIMA 29401312

FRIMA 29401314

**3242465 DOOR HANDLE SPRING**  
for OVEN



FRIMA 2400506

FRIMA 2401100

FRIMA 2402761



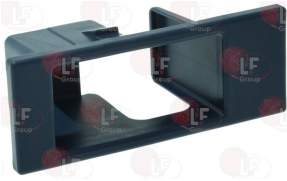


# FRIMA



Suitable for:

**7103779 HOOKING HANDLE OVEN DOOR 90x35x40mm**



FRIMA 20390340

Suitable for:

**3242328 LATCH LH HANDLE OVEN**  
distance between holes 67 mm



FRIMA

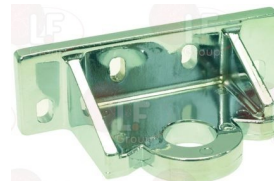
**3242478 LOCK CLAMP FOR OVEN DOOR**  
for OVEN



FRIMA 1010833

FRIMA 29401305

**3242316 OVEN DOOR CLOSING SUPPORT**  
distance between mounting holes 32-90 mm  
for OVEN



FRIMA 20161457

**3242051 OVEN DOOR HANDLE 176x28 mm**  
handle mounting holes distance 121 mm  
for OVEN



FRIMA

**3242052 STRIKE FOR DOOR HANDLE**  
distance between mounting holes 33 mm  
for OVEN



FRIMA

**3242311 OVEN DOOR HANDLE 280x30 mm**  
handle mounting holes distance 123-136 mm



FRIMA 20161100

**3242312 STRIKE FOR OVEN HANDLE**  
distance between mounting holes 15 mm



FRIMA 20160610

**3242474 OVEN DOOR LOCK**  
for OVEN

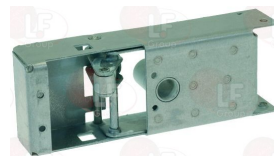


FRIMA 84741019

FRIMA 84741305

FRIMA 84741410

**3242475 OVEN DOOR LOCK**  
for OVEN



FRIMA 1003536

FRIMA 84741300



# FRIMA



Suitable for:

**3242482 PIN FOR OVEN DOOR HANDLE 43 mm**  
for OVEN



FRIMA 2400142

Suitable for:

**3242466 PLASTIC RING ø 56x40x2 mm**  
for OVEN



FRIMA 20161453

**3242464 PLATE FOR DOOR HANDLE LOCK**



FRIMA 2400504

**3242181 RIGHTHAND COMPLETE OVEN DOOR HANDLE**



FRIMA

**3242241 STRIKE FOR OVEN RIGHT HANDLE**  
distance between mounting holes 67 mm  
for OVEN



FRIMA 20160603

**3242052 STRIKE FOR DOOR HANDLE**  
distance between mounting holes 33 mm  
for OVEN



FRIMA

**3242318 STRIKE FOR DOOR HANDLE**  
distance between mounting holes 68 mm  
for OVEN



FRIMA 20160604

**3242477 STRIKE FOR DOOR HANDLE**  
distance between mounting holes 52 mm  
for OVEN



FRIMA 1003540

FRIMA 85141307

**3242312 STRIKE FOR OVEN HANDLE**  
distance between mounting holes 15 mm



FRIMA 20160610

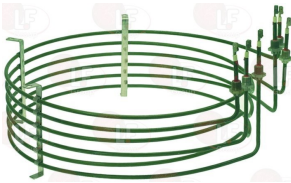
**3242241 STRIKE FOR OVEN RIGHT HANDLE**  
distance between mounting holes 67 mm  
for OVEN



FRIMA 20160603

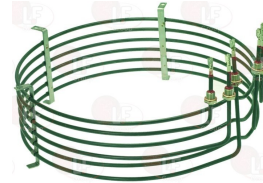
## Heating elements

**3755737 HEATING ELEMENT EXTERNAL 9000W 230V**  
ø external 450 mm - overall height 150 mm  
couplings M14x1.5 mm



FRIMA 30043528

**3755735 HEATING ELEMENT EXTERNAL 9000W 400V**  
ø external 450 mm - overall height 150 mm  
couplings M14x1.5 mm



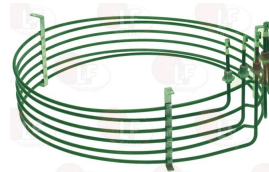
FRIMA 30043530

**3755743 HEATING ELEMENT FOR BOILER 9000W 230V**  
immersed length 385 mm  
external flange ø 64/47.5 mm  
with bulb sheathing - complete with cables



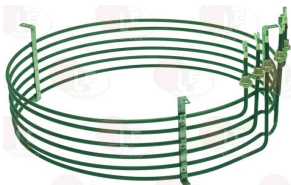
FRIMA

**3755738 HEATING ELEMENT INTERNAL 9000W 230V**  
ø external 400 mm - overall height 135 mm  
couplings M14x1.5 mm



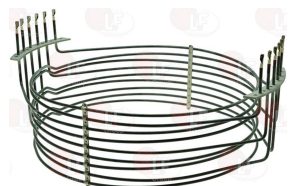
FRIMA 30043529

**3755736 HEATING ELEMENT INTERNAL 9000W 400V**  
ø esterna 400 mm - overall height 130 mm  
couplings M14x1.5 mm



FRIMA 30043531

**3355717 HEATING ELEMENT 15000W 230V**  
external ø 515 mm - overall height 265 mm  
2 flanges 210x24 mm



FRIMA 32001002

FRIMA 32001013

FRIMA 87201596

**3186492 HEATING ELEMENT GASKET**  
external dimensions 209x45 mm



FRIMA 51101009

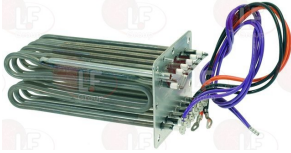


Suitable for:

# FRIMA



**3755804 HEATING ELEMENT 18000W 230/400V**  
 for steam generator  
 immersed length 195 mm  
 flange 122x101 mm - with bulb sheath  
 complete with cables



FRIMA 4400195  
FRIMA 8701016

FRIMA 4401340  
FRIMA 8701017

FRIMA 8700367

Suitable for:

**3186757 HEATING ELEMENT GASKET**  
 external dimensions 125x103 mm



FRIMA 4400279

**5039951 HEATING ELEMENT 18000W 230V**  
 external  $\varnothing$  477 mm - overall height 185 mm  
 flange 140x62 mm - complete with cables



FRIMA 4000265

FRIMA 8700396

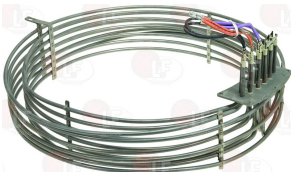
**5046952 HEATING ELEMENT 18000W 230V**  
 external  $\varnothing$  480 mm - overall height 190 mm  
 flange 140x62 mm - complete with cables



FRIMA 4000597

FRIMA 8700404

**7105436 HEATING ELEMENT 18000W 230V**  
 external  $\varnothing$  480 mm - overall height 180 mm  
 flange 140x62 mm - complete with cables



FRIMA 4000075

FRIMA 8700383

**3355711 HEATING ELEMENT 2000W 230V**  
 length 520 mm - width 90 mm  
 connections M14x1.5 mm



FRIMA 30044003

FRIMA 30044300

**3855038 HEATING ELEMENT 20000W 230V**  
 external  $\varnothing$  480 mm - overall height 210 mm  
 flange 140x62 mm - complete with cables



FRIMA 4000113

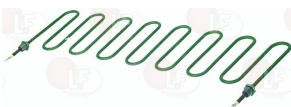
FRIMA 8700576

**3355712 HEATING ELEMENT 2500W 230V**  
 length 510 mm - width 140 mm  
 connections M14x1.5 mm



FRIMA 30041004

**3355713 HEATING ELEMENT 2500W 400V**  
 length 510 mm - width 140 mm  
 connections M14x1.5 mm  
 for Convection oven electric (FRIMA)



FRIMA 30044301

**3355701 HEATING ELEMENT 3000W 230V**  
 immersed length 380 mm - width 60 mm  
 flange 80x28 mm



FRIMA 30043506  
FRIMA 30044306

FRIMA 30044113

FRIMA 30044146



Suitable for:

Suitable for:

**3355703 HEATING ELEMENT 3000W 400V**  
 immersed length 380 mm - width 60 mm  
 flange 80x28 mm



FRIMA 30043509

FRIMA 30044303

**5049945 HEATING ELEMENT 30000W 230V**  
 external  $\varnothing$  640 mm - overall height 200 mm  
 flange 160x75 mm - complete with cables



FRIMA 4000267

FRIMA 8700397

**7150208 HEATING ELEMENT 4000W 230V**  
 length 445 mm - width 155 mm  
 total length 260 mm -  $\varnothing$  14 mm fittings



FRIMA 4002077

**3355702 HEATING ELEMENT 6000W 230V**  
 immersed length 380 mm - width 60 mm  
 flange 80x28 mm



FRIMA 30043505  
 FRIMA 30044305

FRIMA 30044112

FRIMA 30044136

**3355708 HEATING ELEMENT 6000W 230V**  
 immersed length 350 mm - width 65 mm  
 flange 80x28 mm - with bulb sheath



FRIMA 30044155  
 FRIMA 30044163

FRIMA 30044156

FRIMA 30044162

**3455342 HEATING ELEMENT 6000W 230V**  
 immersed length 350 mm - width 65 mm  
 flange 80x28 mm - with bulb sheath  
 complete with thermocouple probe



FRIMA 30043516  
 FRIMA 30044114

FRIMA 30044105  
 FRIMA 30044121

FRIMA 30044108  
 FRIMA 30044307

**3355704 HEATING ELEMENT 6000W 400V**  
 immersed length 380 mm - width 60 mm  
 flange 80x28 mm



FRIMA 30043508

FRIMA 30044302

**3355709 HEATING ELEMENT 6000W 400V**  
 immersed depth 375 mm - width 65 mm  
 flange 80x28 mm - with bulb sheath



FRIMA 30044157  
 FRIMA 30044165

FRIMA 30044158

FRIMA 30044164

**3455331 HEATING ELEMENT 6000W 400V**  
 immersed length 365 mm - width 65 mm  
 flange 80x28 mm - with bulb sheath  
 complete with thermocouple probe



FRIMA 30043518  
 FRIMA 30044120

FRIMA 30043522  
 FRIMA 30044304

FRIMA 30044117  
 FRIMA 30044304+30043518



Suitable for:

Suitable for:

**3455224 HEATING ELEMENT 9000W 230/400V**  
 immersed depth 190 mm  
 flange 82x82 mm - with 2 bulbs sheath  
 complete with cables



FRIMA 4400194

FRIMA 4400534

FRIMA 8700366

**3786136 HEATING ELEMENT GASKET**  
 external dimensions 80x82 mm



FRIMA 4400280

**3355707 HEATING ELEMENT 9000W 230V**  
 immersed length 200 mm  
 flange 82x82 mm - with bulb sheath



FRIMA 32001200

FRIMA 32011000

FRIMA 32011004

**3786136 HEATING ELEMENT GASKET**  
 external dimensions 80x82 mm



FRIMA 4400280

FRIMA 32011009

FRIMA 32011200

FRIMA 32011206

FRIMA 87201590

**3355714 HEATING ELEMENT 9000W 230V**  
 $\varnothing$  external 333 mm - overall height 190 mm  
 connections M14x1.5 mm



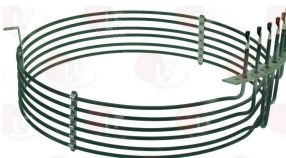
FRIMA 30043507

FRIMA 30043515

FRIMA 30043524

FRIMA 30353524

**3355715 HEATING ELEMENT 9000W 230V**  
 external  $\varnothing$  455 mm - height total 210 mm  
 flange 220x24 mm  
 for OVEN CCC61-CCC101-CCC201-CCD61-CCD101-CCD201  
 CCM101-CCM201-CCM61-CM61-CPC61-CPC101-CPC201  
 CM201N-CM101N  
 for OVEN CD61/CD101/CD201 SINCE JUNE 97



FRIMA 32001000

**3186492 HEATING ELEMENT GASKET**  
 external dimensions 209x45 mm



FRIMA 51101009



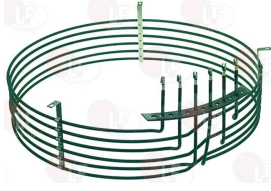


Suitable for:

Suitable for:

**3355716 HEATING ELEMENT 9000W 230V**  
external  $\varnothing$  500 mm - height 130 mm  
flange 220x24 mm

**3186492 HEATING ELEMENT GASKET**  
external dimensions 209x45 mm



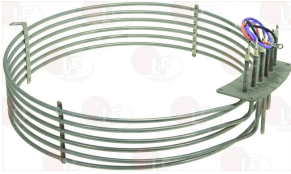
FRIMA 32001001

FRIMA 32001009

FRIMA 87201595

FRIMA 51101009

**5035086 HEATING ELEMENT 9000W 230V**  
external  $\varnothing$  425 mm - overall height 180 mm  
flange 140x62 mm - complete with cables



FRIMA 4000261

FRIMA 8700394

**7104621 HEATING ELEMENT 9000W 230V**  
immersed depth 190 mm  
flange 82x82 mm - with 2 bulbs sheath  
complete with cables

**3786136 HEATING ELEMENT GASKET**  
external dimensions 80x82 mm



FRIMA 4400292

FRIMA 8700371

FRIMA 4400280

**3755745 INTERNAL HEATING ELEMENT 15000W 230V**  
external  $\varnothing$  650 mm  
2 flanges 210x24 mm

**3186492 HEATING ELEMENT GASKET**  
external dimensions 209x45 mm



FRIMA 32001003

FRIMA 32001017

FRIMA 87201597

FRIMA 51101009

## Hinges, catches and accessories

**3053447 BUSHING FOR OVEN DOOR HINGE**

**3053451 BUSHING FOR OVEN DOOR HINGE**



FRIMA 2400147

FRIMA 2400159



Suitable for:

# FRIMA



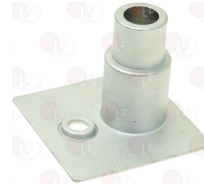
**5044931 BUSHING FOR OVEN DOOR HINGE**



FRIMA 29401303

Suitable for:

**7104582 BUSHING FOR OVEN DOOR HINGE**



FRIMA 29401300

**5044933 HINGE LOWER OVEN DOOR**



FRIMA 29301306

**5044931 BUSHING FOR OVEN DOOR HINGE**



FRIMA 29401303

**5038941 PLATE FOR OVEN DOOR HINGE**



FRIMA 29401302

**3053455 HINGE LOWER OVEN DOOR LH**



FRIMA 2400223

**3743145 FLAT WASHER M8**

internal/external  $\varnothing$  8.4/16 mm - thickness 1.6 mm  
stainless steel - UNI 6592 - DIN 125 A - ISO 7089



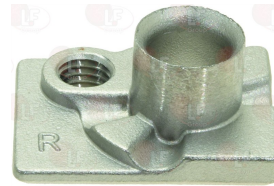
FRIMA 13080160

**3053449 PIN FOR LOWER HINGE LOWER OVEN DOOR**



FRIMA 2400146

**7105337 PIN FOR OVEN DOOR LOWER HINGE**



FRIMA 2400137

**3053450 HINGE UPPER OVEN DOOR**



FRIMA 2400133

**3053447 BUSHING FOR OVEN DOOR HINGE**



FRIMA 2400147



Suitable for:

**3743145 FLAT WASHER M8**  
internal/external  $\varnothing$  8.4/16 mm - thickness 1.6 mm  
stainless steel - UNI 6592 - DIN 125 A - ISO 7089



FRIMA 13080160

**5037587 SPRING FOR DOOR HINGE  $\varnothing$  14x28 mm**



FRIMA 20010109

**7104583 HINGE UPPER OVEN DOOR**



FRIMA 29301307

**3528010 FLAT WASHER M6**  
 $\varnothing$  internal/external 6,4/12 mm - thickness 1,6 mm  
st./steel - UNI 6592 - DIN 125 A - ISO 7089



FRIMA 13060120

**5037587 SPRING FOR DOOR HINGE  $\varnothing$  14x28 mm**



FRIMA 20010109

**3053449 PIN FOR LOWER HINGE LOWER OVEN DOOR**



FRIMA 2400146

## FRIMA

Suitable for:

**3053446 PIN FOR OVEN UPPER HINGE**



FRIMA 2400048

**7104582 BUSHING FOR OVEN DOOR HINGE**



FRIMA 29401300

**5015677 PIN FOR UPPER HINGE OVEN DOOR**  
length 49 mm



FRIMA 21201254





Suitable for:

# FRIMA

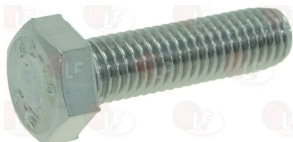


3053448 PIN FOR OVEN DOOR LOWER HINGE



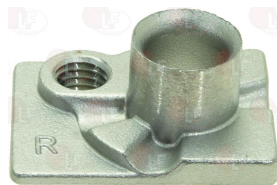
FRIMA 2400145

9528028 HEXAGON HEAD SCREW M8x30  
stainless steel - UNI 5739 - DIN 933 - ISO 4017



FRIMA 10080766

7105337 PIN FOR OVEN DOOR LOWER HINGE



FRIMA 2400137

5015677 PIN FOR UPPER HINGE OVEN DOOR  
length 49 mm



FRIMA 21201254

5037587 SPRING FOR DOOR HINGE  $\varnothing$  14x28 mm



FRIMA 20010109

3053451 BUSHING FOR OVEN DOOR HINGE



FRIMA 2400159

3053446 PIN FOR OVEN UPPER HINGE



FRIMA 2400048

5038941 PLATE FOR OVEN DOOR HINGE



FRIMA 29401302

## Hose reels

3359292 BLACK SHOWER CASE



FRIMA 5000130



## Hose reels

**3359143 BLACK SHOWER CASE  $\varnothing$  1/2" M**  
for Convection oven (FRIMA) FCM101  
for Convection oven (FRIMA) FCM101 - FCM201



FRIMA 20600215

FRIMA 20601000

FRIMA 20601006

**3359144 SPRAY HEAD FASTENING**



FRIMA 20601210

**5039350 CONNECTION HOSE FOR COILING HOSE 590 mm**



FRIMA 5000174

**5061240 HOSE FITTING COILING HOSE 445 mm**



FRIMA 5000172

**5050340 HOSE FOR SHOWER COILING ASSEMBLY 1345 mm**



FRIMA 20670710

**5033913 HOSE FOR SHOWER COILING ASSEMBLY 1500 mm**



FRIMA 20670605

FRIMA 20670610

**7105034 HOUSING FOR SHOWER BLACK**



FRIMA 5000549

**5021511 KIT SHOWER HOUSING BLACK  $\varnothing$  1/2" M**  
complete with supports



FRIMA 20600100

**3359289 SHOWER COILER UNIT**  
with pipe 210 cm

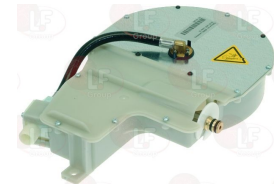


FRIMA 86552020

FRIMA 86552020P

FRIMA 86552021

**3359296 SHOWER COILER UNIT**  
with pipe 100 cm



FRIMA 5000140P

FRIMA 5001238P

**7105692 SHOWER COILER UNIT**



FRIMA 5000799

FRIMA 5000799P

**7105034 HOUSING FOR SHOWER BLACK**



FRIMA 5000549



Suitable for:

**2110901 SHOWER ROLL ASSEMBLY**  
with 120 cm hose



FRIMA 84101013

Suitable for:

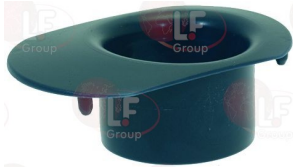
**5042442 SHOWER ROLL ASSEMBLY**  
with 150 cm hose



FRIMA 5000176P

FRIMA 5001239P

**3359144 SPRAY HEAD FASTENING**



FRIMA 20601210

## Hydraulic piping

**7101121 HOSE SILICONE  $\varnothing$  17/10 mm 200 mm**



FRIMA 20670114

**3450209 RUBBER PIPE  $\varnothing$  13x20 mm - 40 m**  
operating temperature -40+100°C



FRIMA 20670301

FRIMA 20670315

FRIMA 21101017

**3450109 RUBBER PIPE  $\varnothing$  13x20 mm - 5 m**  
operating temperature -40+100°C



FRIMA 20670300

FRIMA 20670301

FRIMA 20670315

**1449689 SILICONE HOSE  $\varnothing$  10x13 SHORE 60 - 10 m**  
alimentary



FRIMA 21101008

**5038453 SILICONE PIPE  $\varnothing$  17/10 mm 1000 mm**



FRIMA 1010525

FRIMA 20670050





## Incandescent lamps and neon lamps

**3221252 NEON LAMP FOR OVEN Ba15d 7W 230V**  
dimensions  $\varnothing$  16x35 mm  
for OVEN



FRIMA 30250306

**3221067 NEON LAMP FOR OVEN E10 2W 230V**  
dimensions  $\varnothing$  10x28 mm  
for OVEN



FRIMA 30240300

**3221250 NEUTRAL HALOGEN LAMP G4 10W 12V**  
max. temperature 300°C



FRIMA 30240201

FRIMA 30240201P

**3221041 OVEN LAMP E14 15W 230V**  
max temperature 300°C  
for OVEN - PIZZA OVEN



FRIMA 30240200

**3221253 OVEN LAMP E14 6/10W 230V**  
dimensions  $\varnothing$  16x52 mm



FRIMA 30250304

**3221251 OVEN LAMP T10 2W 24V**  
dimensions  $\varnothing$  10x28 mm



FRIMA 30240210

FRIMA 30250210

## Indicator lights

**3221425 GREEN INDICATOR LAMP 1W 250V**  
wire connection length 95 mm - 120°C



FRIMA 30240309

**3221586 HEAT ORANGE INDICATOR LAMP 1W**  
wire connection



FRIMA 30240307

**3221097 NEUTRAL INDICATOR LAMP 220V**  
head  $\varnothing$  8 mm - 120°C



FRIMA

**3221163 ORANGE LAMP RECEPTACLE**  
head  $\varnothing$  15 mm - hole  $\varnothing$  10 mm



FRIMA



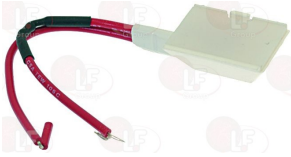
Suitable for:

# FRIMA



Suitable for:

**3221427 RED INDICATOR LAMP 250V 1W**  
wire connection length 95 mm - 120°C



FRIMA 30240310

## Interference suppression filters

**2111282 INTERF. SUPPRES. FILTER LUETZE 0.22µF 24**



FRIMA 1003379

FRIMA 30350508

**5048545 INTERF. SUPPRES. FILTER SCHURTER**



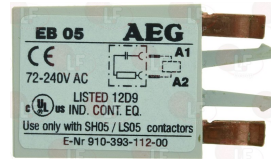
FRIMA 4002424

**5020722 INTERF. SUPPRES. FILTER 250/440Vac**



FRIMA 30010455

**3351240 INTERFERENCE SUPPR.FILTER AEG EB05-A240**  
72-240V



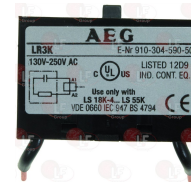
FRIMA 30350517

**5024801 INTERFERENCE SUPPRES.FILTER 1.5µF 275Vac**



FRIMA 31021000

**3351242 INTERFERENCE SUPPRESSION FILTER AEG LR3K**  
130-250V



FRIMA 30350509

FRIMA 30350519

## Ironmongery (screws,nuts,washers)

**5022406 COUNTERSUNK FLAT HEAD SCREWS M5x16**  
hexagon socket - stainless steel  
UNI 5933 - DIN 7991 - ISO 10642



FRIMA 10051960

**5015285 COUNTERSUNK FLAT HEAD SCREWS M6x16**  
hexagon socket - stainless steel  
UNI 5933 - DIN 7991 - ISO 10642



FRIMA 10061960



Suitable for:

**3528010 FLAT WASHER M6**  
 ø internal/external 6,4/12 mm - thickness 1,6 mm  
 st./steel - UNI 6592 - DIN 125 A - ISO 7089



FRIMA 13060120

Suitable for:

**3743145 FLAT WASHER M8**  
 internal/external ø 8.4/16 mm - thickness 1.6 mm  
 stainless steel - UNI 6592 - DIN 125 A - ISO 7089



FRIMA 13080160

**5022029 HEXAGON HEAD SCREW M10x16**  
 stainless steel - UNI 5739 - DIN 933 - ISO 4017



FRIMA 10100760

**3528202 HEXAGONAL NUT M6 SHORT**  
 stainless steel - UNI 5589 - DIN 936 - ISO 4035



FRIMA 11060220

**1528030 MID HEXAGONAL NUT M6**  
 stainless steel - UNI 5588 - DIN 934 - ISO 4032

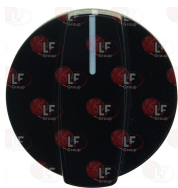


FRIMA 11060160

FRIMA 11060803

## Knobs

**3241361 BLACK KNOB ø 40 mm**  
 round hole ø 6 mm with fastening screw  
 for timer



FRIMA 30130325

**3241363 BLACK KNOB ø 50 mm**  
 D-shaped hole 6x4.6 mm



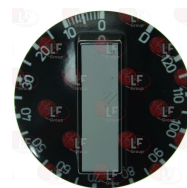
FRIMA 30130113

**3241677 BLACK KNOB ø 50 mm**  
 D-shaped hole 6x4.6 mm



FRIMA 1600282

**3241362 BLACK KNOB ø 50 mm 10-120'**  
 D-shaped hole 6x4.6 mm  
 for timer



FRIMA 30130108



# FRIMA



Suitable for:

Suitable for:

**3241359 BLACK KNOB  $\varnothing$  50 mm 5-120'**  
D-shaped hole 6x4.6 mm  
for timer

**3241279 BLUE KNOB  $\varnothing$  52 mm**  
D-shaped hole 6x4.6 mm



FRIMA 30130105

FRIMA 1003340

FRIMA 30130344

**3242675 BLUE KNOB  $\varnothing$  60 mm**  
D-shaped hole 6x4.6 mm

**3241360 GREY KNOB  $\varnothing$  40 mm**  
D-shaped hole 6x4.6 mm  
for timer



FRIMA 1003341

FRIMA 30130355

FRIMA 30130330

**3241696 GREY KNOB  $\varnothing$  70 mm**  
round hole  $\varnothing$  5 mm

**3241358 KNOB BLACK  $\varnothing$  50 mm 50-300°C**  
D-shaped hole 6x4.6 mm



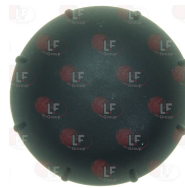
FRIMA 1600232

FRIMA 1003339

FRIMA 30130201

**5056747 KNOB BLACK  $\varnothing$  52 mm**  
D-shaped hole 6x4.6 mm

**7106617 KNOB BLACK  $\varnothing$  67 mm**  
round hole  $\varnothing$  5 mm



FRIMA 30130345

FRIMA 1600231

**5024397 KNOB BLUE  $\varnothing$  40 mm**  
round hole  $\varnothing$  6 mm

**7109706 KNOB SILVER  $\varnothing$  70 mm**  
round hole  $\varnothing$  5 mm



FRIMA 30130329

FRIMA 1602062



## Lamp receptacles and spare parts

**3221413 EXTERNAL GASKET F/GLASS LAMP RECEPTACLE**  
external dimensions 80x65 mm



FRIMA 4000093

**3221423 EXTERNAL GASKET F/LAMP RECEPTACLE GLASS**  
external dimensions 93x70 mm



FRIMA 1003483

FRIMA 51101022

**3221429 FRAME FOR OVEN LAMP RECEPTACLE**  
external dimensions 115x90 mm



FRIMA 85141007

FRIMA 85141017

**3221434 FRAME FOR OVEN LAMP RECEPTACLE**  
external dimensions 85x100 mm  
complete with glass and glass gasket



FRIMA 4000091

FRIMA 4000096

**3221053 GASKET FOR OVEN LAMP RECEPTACLE**  
dimensions  $\varnothing$  48x38x5 mm  
for OVEN



FRIMA 30250003

FRIMA 50120509

**3221428 GLASS FOR OVEN LAMP RECEPTACLE**  
external dimensions 96x73 mm



FRIMA 1003487

FRIMA 52011000

**3221433 GLASS FOR OVEN LAMP RECEPTACLE**  
external dimensions 80x65 mm



FRIMA 4000095

**3221232 GLASS FOR OVEN LAMP RECEPTACLE  $\varnothing$  53 mm**  
thread  $\varnothing$  33 mm - overall height 32 mm



FRIMA 30250002

**3221412 HALOGEN LAMP RECEPTACLE G4 10W 12V**  
wire connection length 130 mm



FRIMA 1003539

FRIMA 85141018

**3221431 HALOGEN LAMP RECEPTACLE G4 10W 12V**  
wire connection length 150 mm



FRIMA 4000098



Suitable for:

# FRIMA



**3221414 INTERNAL GASKET F/LAMP RECEPTACLE GLASS**  
external dimensions 83x70 mm



FRIMA 4000094

Suitable for:

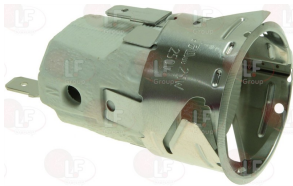
**3221422 INTERNAL GASKET F/LAMP RECEPTACLE GLASS**  
external dimensions 100x75 mm



FRIMA 1003484

FRIMA 51101023

**3221311 LAMP RECEPTACLE E14 25W 230V**  
mounting hole  $\varnothing$  36 mm  
max temperature 300°C



FRIMA

**3221679 LAMP RECEPTACLE W/LAMP E14 15W 230V**  
lamp glass  $\varnothing$  53 mm  
mounting hole  $\varnothing$  36 mm  
max temperature 300°C



FRIMA 30230501

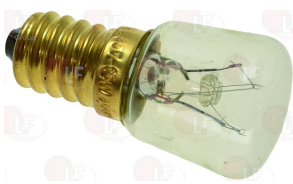
**3221053 GASKET FOR OVEN LAMP RECEPTACLE**  
dimensions  $\varnothing$  48x38x5 mm  
for OVEN



FRIMA 30250003

FRIMA 50120509

**3221041 OVEN LAMP E14 15W 230V**  
max temperature 300°C  
for OVEN - PIZZA OVEN



FRIMA 30240200

**3221350 LAMP RECEPTACLE WITH LAMP E14 15W 230V**  
lamp glass  $\varnothing$  42 mm  
mounting hole  $\varnothing$  38 mm  
max temperature 300°C



FRIMA 30230502

FRIMA 30230506

**3221625 OVEN LAMP RECEPTACLE  $\varnothing$  51 mm**  
thread  $\varnothing$  33 mm - overall height 27 mm



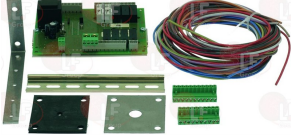
FRIMA 30250002





## Level regulators

**3341049 230V CARD LEVEL ADJUSTER SET**  
230V 50/60Hz  
NEW TYPE



FRIMA 87201501

## Level sensors

**7110349 KIT LEVEL PROBE M15x1.5 mm 110 mm**  
complete with connecting cable



FRIMA 4401290

FRIMA 8701218

**5049485 KIT LEVEL PROBE M15x1.5 mm 150 mm**  
complete with connecting cable



FRIMA 4400287

FRIMA 4401371

FRIMA 8701221

**7110169 KIT LEVEL PROBE M15x1.5 mm 190 mm**  
complete with connection cable



FRIMA 4400514

FRIMA 8701219

**3341051 LEVEL PROBE 3 ELECTRODES PG9 108 mm**



FRIMA 30020401

FRIMA 30020410

**3341042 LEVEL PROBE 3 ELECTRODES PG9 112 mm**



FRIMA 30020409

**3341052 LEVEL PROBE 3 ELECTRODES PG9 130 mm**



FRIMA 30020402

**3341043 PROBE HOUSING 83x83 mm**



FRIMA 29201300

**5021575 PROBE SLOT 185x95 mm**



FRIMA 83541302



Suitable for:

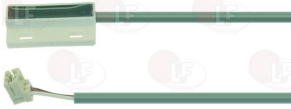
# FRIMA



Suitable for:

## Microswitches

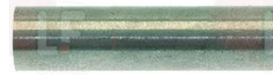
**3240753 DOOR MAGNETIC MICROSWITCH MK12**  
with cable length 1600 mm - head 32x7x15 mm



FRIMA 4000335

FRIMA 4000454

**3240754 MAGNET FOR MICROSWITCH ø 10x40 mm**



FRIMA 30161409

**3240437 MAGNET FOR MICROSWITCH 25x12x9 mm**



FRIMA 30161412

**3240436 MAGNETIC MICRO SWITCH MK12**  
with cable 4000 mm - head 32x15 mm  
for Convection oven (FRIMA)



FRIMA 30161408

FRIMA 30161415

**3240437 MAGNET FOR MICROSWITCH 25x12x9 mm**



FRIMA 30161412

**3240763 MAGNETIC MICROSWITCH ø 8x65 mm**  
with cable length 2800 mm



FRIMA 30161417

FRIMA 30161436

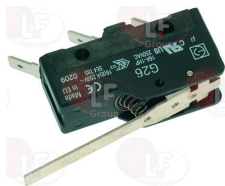
FRIMA 30161437

**3240568 MICROSWITCH EF83161.3 16A 250V**



FRIMA 30160101

**1240805 MICROSWITCH G26 16A 250V**  
for Convection oven (FRIMA)  
since 1/06/97  
Series CM



FRIMA 30403011

**5037761 MICROSWITCH VALVE 0.1A 250V**



FRIMA 30160102

Suitable for:

Suitable for:

**3240054 MICROSWITCH 83731 5A 250V**  
with cable length 500 mm



FRIMA 30161400

FRIMA 30161403

FRIMA 30161407

## Motors

**7105811 COUNTER FLANGE FOR MOTOR SHAFT**  
external  $\varnothing$  60 mm - internal  $\varnothing$  26 mm -thickness 6 mm



FRIMA 20160875

**5039512 FLANGE FOR MOTOR SHAFT**  
external  $\varnothing$  60 mm - internal  $\varnothing$  22 mm  
thickness 6 mm



FRIMA 20160876

**3240482 GASKET KIT FOR MAIN SHAFT**



FRIMA 50010207

FRIMA 8700563

**5061618 KIT MOTOR FAN 0.55Kw 100/240V**  
TYPE EBM M3G084-FA25-24



FRIMA 4003378

FRIMA 4003378P

**5037762 MOTOR SHAFT GASKET KIT**



FRIMA 2200083

FRIMA 8700564

**3340069 MOTOR FAN SET 0.45Kw 100/240V**  
TYPE EBM M3G084-FA22-16



FRIMA 4000274

FRIMA 4000274P

**5037758 FAN  $\varnothing$  340 mm**  
thickness 130 mm  
number of blades 9 - tapered hole  $\varnothing$  13-16 mm



FRIMA 2200192



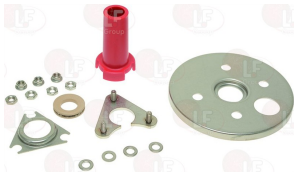
Suitable for:

**5044377** **FAN ø 340 mm**  
thickness 95 mm  
number of blades 9 - tapered hole ø 13-16 mm



FRIMA 2200188

**5037762** **MOTOR SHAFT GASKET KIT**



FRIMA 2200083

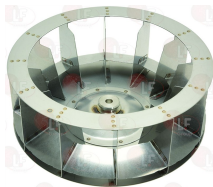
FRIMA 8700564

**2111025** **MOTOR L7RW84D-208 380/415/460V**  
P2: 0.040/0.37Kw P1: 0.10/0.55Kw  
50/60Hz 0.3/0.85A - 710/1350rpm 850/1680rpm



FRIMA 31001000

**7106118** **FAN ø 350 mm**  
thickness 125 mm  
number of blades 12 - tapered hole ø 13-16 mm



FRIMA 20120900

**3240482** **GASKET KIT FOR MAIN SHAFT**



FRIMA 50010207

FRIMA 8700563

# FRIMA



Suitable for:

**3340010** **MOTOR SHAFT FLANGE**



FRIMA 2200123

**7105811** **COUNTER FLANGE FOR MOTOR SHAFT**  
external ø 60 mm - internal ø 26 mm - thickness 6 mm



FRIMA 20160875

**5039512** **FLANGE FOR MOTOR SHAFT**  
external ø 60 mm - internal ø 22 mm  
thickness 6 mm



FRIMA 20160876

**5022029** **HEXAGON HEAD SCREW M10x16**  
stainless steel - UNI 5739 - DIN 933 - ISO 4017



FRIMA 10100760



Suitable for:

**3786369 MAIN SHAFT SEALING GASKET**  
external  $\varnothing$  37 mm - internal  $\varnothing$  24.5 mm  
thickness 4 mm



FRIMA 50010211

# FRIMA



Suitable for:

**3240115 MOTOR L7ZAW4D-099 0.245Kw**  
230/415V 50/60Hz  
for Convection oven (FRIMA) CD101 - CD201 - CD6



FRIMA 30010400

FRIMA 30010426

**3240720 MOTOR L7ZAW4D-199 0.16/0.26Kw**  
220/240V - 50/60Hz 1.3A - 1420/1720rpm  
capacitor 16  $\mu$ f



FRIMA 30010441

**5022029 HEXAGON HEAD SCREW M10x16**  
stainless steel - UNI 5739 - DIN 933 - ISO 4017



FRIMA 10100760

**3786497 MOTOR SHAFT GASKET**



FRIMA 50020300

FRIMA 50020301

**3240116 MOTOR L9CW4D-161 0.37/0.58Kw**  
2.85/1.65A - 1400rpm - 230/415V 50Hz



FRIMA 30010403

FRIMA 30010428

FRIMA 30010436

**5022029 HEXAGON HEAD SCREW M10x16**  
stainless steel - UNI 5739 - DIN 933 - ISO 4017



FRIMA 10100760



Suitable for:

**3786497 MOTOR SHAFT GASKET**



FRIMA 50020300

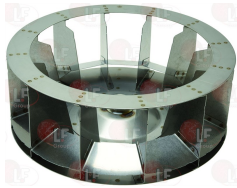
FRIMA 50020301

**3240755 MOTOR L9CW4D-304 0.45/0.65Kw**  
220/240/380/415V 50Hz  
1.9/1.1A - 1400rpm



FRIMA 31001021

**5014685 FAN ø 350 mm**  
thickness 125 mm  
number of blades 12 - conical hole ø 13-16 mm



FRIMA 20120507

**3240482 GASKET KIT FOR MAIN SHAFT**



FRIMA 50010207

FRIMA 8700563

**3240761 MOTOR L9DFW4D-518 0.68/0.87Kw**  
240V 60Hz - 2.9A - 1730rpm



FRIMA 1010303

FRIMA 31001080

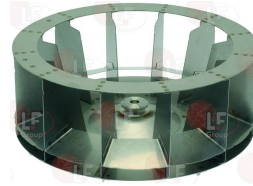
FRIMA 31001083

# FRIMA

Suitable for:



**3240757 FAN ø 350 mm**  
thickness 135 mm  
total blades 12 - ø tapered hole 13-16.5 mm



FRIMA 1012741

FRIMA 20120512

**5039512 FLANGE FOR MOTOR SHAFT**  
external ø 60 mm - internal ø 22 mm  
thickness 6 mm



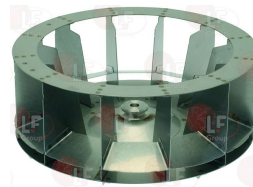
FRIMA 20160876

**3528028 HEXAGON HEAD SCREW M10x20**  
stainless steel - UNI 5739 - DIN 933 - ISO 4017



FRIMA 10100762

**3240757 FAN ø 350 mm**  
thickness 135 mm  
total blades 12 - ø tapered hole 13-16.5 mm



FRIMA 1012741

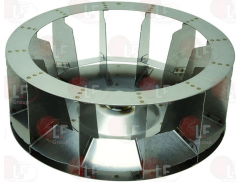
FRIMA 20120512





Suitable for:

**5014685 FAN  $\varnothing$  350 mm**  
thickness 125 mm  
number of blades 12 - conical hole  $\varnothing$  13-16 mm



FRIMA 20120507

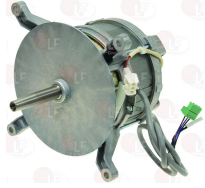
**3240482 GASKET KIT FOR MAIN SHAFT**



FRIMA 50010207

FRIMA 8700563

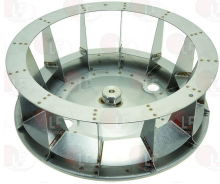
**7106494 MOTOR L9DFW4D-519 0.68/0.87Kw**  
240V 60Hz - 2.9A - 1730rpm



FRIMA 31001081

FRIMA 31001084

**7104102 FAN  $\varnothing$  450 mm**  
thickness 155 mm  
number of blades 12 - tapered hole  $\varnothing$  13.5-17 mm



FRIMA 20120508

**3240482 GASKET KIT FOR MAIN SHAFT**



FRIMA 50010207

FRIMA 8700563

## FRIMA

Suitable for:

**5039512 FLANGE FOR MOTOR SHAFT**  
external  $\varnothing$  60 mm - internal  $\varnothing$  22 mm  
thickness 6 mm



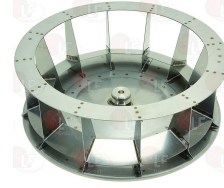
FRIMA 20160876

**3528028 HEXAGON HEAD SCREW M 10x20**  
stainless steel - UNI 5739 - DIN 933 - ISO 4017



FRIMA 10100762

**5037083 FAN  $\varnothing$  450 mm**  
thickness 165 mm  
number of blades 12 - tapered hole  $\varnothing$  14-17 mm



FRIMA 20120513

**5039512 FLANGE FOR MOTOR SHAFT**  
external  $\varnothing$  60 mm - internal  $\varnothing$  22 mm  
thickness 6 mm



FRIMA 20160876

**3528028 HEXAGON HEAD SCREW M 10x20**  
stainless steel - UNI 5739 - DIN 933 - ISO 4017



FRIMA 10100762



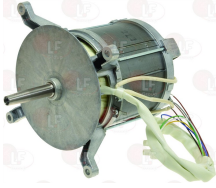


Suitable for:

# FRIMA

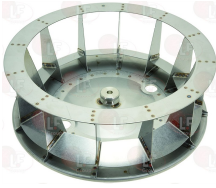


**5036677 MOTOR L9FGW4D-395 220/240/380/415V**  
P2: 1Kw P1: 1.25Kw  
50Hz 4/2.3A - 1400rpm



FRIMA 31001023

**7104102 FAN ø 450 mm**  
thickness 155 mm  
number of blades 12 - tapered hole ø 13.5-17 mm



FRIMA 20120508

**3240482 GASKET KIT FOR MAIN SHAFT**



FRIMA 50010207

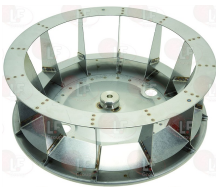
FRIMA 8700563

**5054035 MOTOR L9FGW4D-395 220/240/380/415V**  
P2: 1Kw P1: 1.25Kw  
50Hz 4/2.3A - 1400rpm



FRIMA 31001069

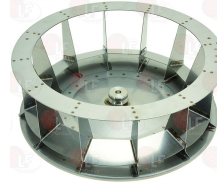
**7104102 FAN ø 450 mm**  
thickness 155 mm  
number of blades 12 - tapered hole ø 13.5-17 mm



FRIMA 20120508

Suitable for:

**5037083 FAN ø 450 mm**  
thickness 165 mm  
number of blades 12 - tapered hole ø 14-17 mm



FRIMA 20120513

**5039512 FLANGE FOR MOTOR SHAFT**  
external ø 60 mm - internal ø 22 mm  
thickness 6 mm



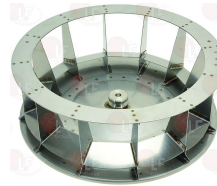
FRIMA 20160876

**3528028 HEXAGON HEAD SCREW M10x20**  
stainless steel - UNI 5739 - DIN 933 - ISO 4017



FRIMA 10100762

**5037083 FAN ø 450 mm**  
thickness 165 mm  
number of blades 12 - tapered hole ø 14-17 mm



FRIMA 20120513

**5039512 FLANGE FOR MOTOR SHAFT**  
external ø 60 mm - internal ø 22 mm  
thickness 6 mm



FRIMA 20160876



Suitable for:

**3240482 GASKET KIT FOR MAIN SHAFT**



FRIMA 50010207

FRIMA 8700563

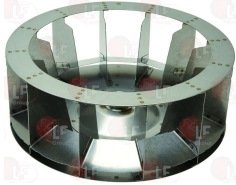
**5014684 MOTOR L9FW4D-397 0.45/0.615Kw**  
230/240V 50Hz - 3.1A - 1440rpm



FRIMA 31001024

FRIMA 31001044

**5014685 FAN ø 350 mm**  
thickness 125 mm  
number of blades 12 - conical hole ø 13-16 mm



FRIMA 20120507

**3240482 GASKET KIT FOR MAIN SHAFT**



FRIMA 50010207

FRIMA 8700563

**5017597 MOTOR L9FW4D-397 0.45/0.615Kw**  
230/240V 50Hz - 3.1A - 1440rpm



FRIMA 31001061

# FRIMA



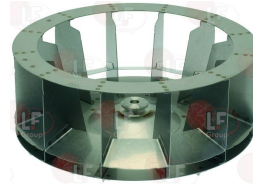
Suitable for:

**3528028 HEXAGON HEAD SCREW M10x20**  
stainless steel - UNI 5739 - DIN 933 - ISO 4017



FRIMA 10100762

**3240757 FAN ø 350 mm**  
thickness 135 mm  
total blades 12 - ø tapered hole 13-16.5 mm



FRIMA 1012741

FRIMA 20120512

**5039512 FLANGE FOR MOTOR SHAFT**  
external ø 60 mm - internal ø 22 mm  
thickness 6 mm



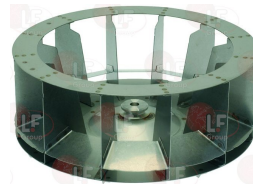
FRIMA 20160876

**3528028 HEXAGON HEAD SCREW M10x20**  
stainless steel - UNI 5739 - DIN 933 - ISO 4017



FRIMA 10100762

**3240757 FAN ø 350 mm**  
thickness 135 mm  
total blades 12 - ø tapered hole 13-16.5 mm



FRIMA 1012741

FRIMA 20120512



Suitable for:

**3528010 FLAT WASHER M6**  
ø internal/external 6,4/12 mm - thickness 1,6 mm  
st./steel - UNI 6592 - DIN 125 A - ISO 7089



FRIMA 13060120

# FRIMA



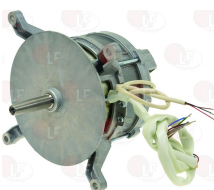
Suitable for:

**3528028 HEXAGON HEAD SCREW M10x20**  
stainless steel - UNI 5739 - DIN 933 - ISO 4017



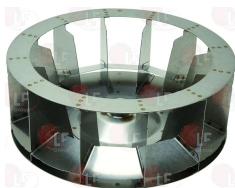
FRIMA 10100762

**3240481 MOTOR L9XW84D-393 0.45/0.66Kw**  
380/415V 50Hz - 0.4/1.15A - 700/1400rpm



FRIMA 31001020

**5014685 FAN ø 350 mm**  
thickness 125 mm  
number of blades 12 - conical hole ø 13-16 mm



FRIMA 20120507

**3240482 GASKET KIT FOR MAIN SHAFT**



FRIMA 50010207

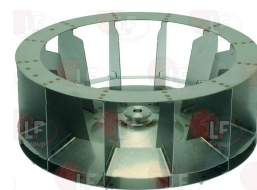
FRIMA 8700563

**3240762 MOTOR L9XW84D-393 0.45/0.66Kw**  
380/415V 50Hz - 0.4/1.15A - 700/1400rpm



FRIMA 31001049

**3240757 FAN ø 350 mm**  
thickness 135 mm  
total blades 12 - ø tapered hole 13-16.5 mm



FRIMA 1012741

FRIMA 20120512

**5039512 FLANGE FOR MOTOR SHAFT**  
external ø 60 mm - internal ø 22 mm  
thickness 6 mm



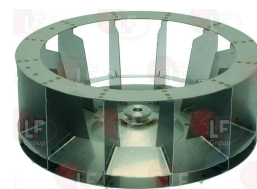
FRIMA 20160876

**3528028 HEXAGON HEAD SCREW M10x20**  
stainless steel - UNI 5739 - DIN 933 - ISO 4017



FRIMA 10100762

**3240757 FAN ø 350 mm**  
thickness 135 mm  
total blades 12 - ø tapered hole 13-16.5 mm



FRIMA 1012741

FRIMA 20120512



Suitable for:

**3340009 MOTOR L9XW84D-408 220/240V**  
 P2: 0.08/0.45Kw P1: 0.14/0.66Kw  
 50Hz 0.7/2A - 700/1400rpm



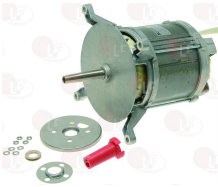
FRIMA 31001048

**3340010 MOTOR SHAFT FLANGE**



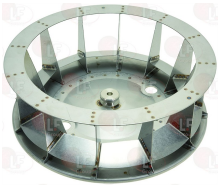
FRIMA 2200123

**3240756 MOTOR L9ZW84D-394 380/415V**  
 P2: 0.12/0.9Kw P1: 0.24/1.2Kw  
 50Hz 0.9/2.1A - 700/1380rpm



FRIMA 31001068

**7104102 FAN ø 450 mm**  
 thickness 155 mm  
 number of blades 12 - tapered hole ø 13.5-17 mm



FRIMA 20120508

**3240482 GASKET KIT FOR MAIN SHAFT**



FRIMA 50010207

FRIMA 8700563

Suitable for:

**3786369 MAIN SHAFT SEALING GASKET**  
 external ø 37 mm - internal ø 24.5 mm  
 thickness 4 mm



FRIMA 50010211

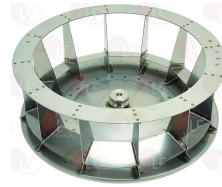
**3786497 MOTOR SHAFT GASKET**



FRIMA 50020300

FRIMA 50020301

**5037083 FAN ø 450 mm**  
 thickness 165 mm  
 number of blades 12 - tapered hole ø 14-17 mm



FRIMA 20120513

**5039512 FLANGE FOR MOTOR SHAFT**  
 external ø 60 mm - internal ø 22 mm  
 thickness 6 mm



FRIMA 20160876

**3528028 HEXAGON HEAD SCREW M10x20**  
 stainless steel - UNI 5739 - DIN 933 - ISO 4017



FRIMA 10100762



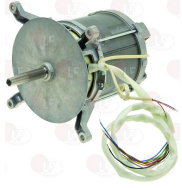


Suitable for:

# FRIMA

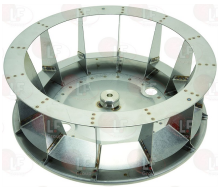


**5037853 MOTOR L9ZW84D-394 380/415V**  
P2: 0.12/0.9Kw P1: 0.24/1.2Kw  
50Hz 0.9/2.1A - 700/1380rpm



FRIMA 31001022

**7104102 FAN  $\varnothing$  450 mm**  
thickness 155 mm  
number of blades 12 - tapered hole  $\varnothing$  13.5-17 mm



FRIMA 20120508

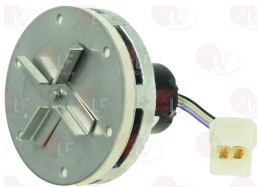
**3240482 GASKET KIT FOR MAIN SHAFT**



FRIMA 50010207

FRIMA 8700563

**2110792 MOTOR MEASURING HUMIDITY**



FRIMA 86801006

**5037762 MOTOR SHAFT GASKET KIT**

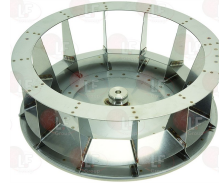


FRIMA 2200083

FRIMA 8700564

Suitable for:

**5037083 FAN  $\varnothing$  450 mm**  
thickness 165 mm  
number of blades 12 - tapered hole  $\varnothing$  14-17 mm



FRIMA 20120513

**5039512 FLANGE FOR MOTOR SHAFT**  
external  $\varnothing$  60 mm - internal  $\varnothing$  22 mm  
thickness 6 mm



FRIMA 20160876

**3528028 HEXAGON HEAD SCREW M10x20**  
stainless steel - UNI 5739 - DIN 933 - ISO 4017



FRIMA 10100762

**3340010 MOTOR SHAFT FLANGE**



FRIMA 2200123





## Non-return and expansion valves

**5030100 VALVE FOR BOILER AIRING 125x60 mm**  
 ø 10 mm hose-end



FRIMA 83541304

**7104570 VALVE OVEN VENTILATION ø 20x18 mm**  
 complete with O-ring gasket  
 hole ø 2 mm



FRIMA 20690108

## Outlet solenoid valves and accessories

**3356145 BOILER DRAIN VALVE**  
 12 Vdc



FRIMA 5400357

FRIMA 5401291

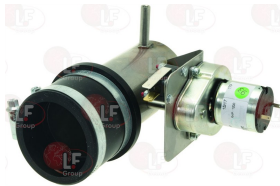
FRIMA 8701191

**3322303 VALVE CLIMATE CONTROL COMPLETE 12V**  
 shaft ø 6 mm



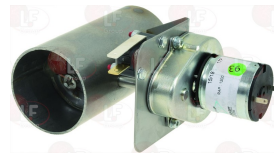
FRIMA 2200318

**7110467 VALVE CLIMATE CONTROL COMPLETE 12V**  
 ø shaft 6 mm



FRIMA 2200568

**5022927 VALVE FOR CLIMATE COMPLETE 12Vdc**  
 ø shaft 6 mm



FRIMA 84501319

## OR and ORM gaskets

**5034731 GASKET FILTER**



FRIMA 50120565



Suitable for:

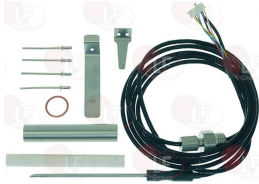
# FRIMA



Suitable for:

## Penetration probes

**3397159 KIT PROBE PENETRATION TCK**  
 8 wires - connector fitting  
 bulb length 97 mm  
 cable length 2160 mm  
 with fastening coupling M16



FRIMA 4000295

FRIMA 8700096

**3397160 KIT PROBE PENETRATION TCK**  
 complete with accessories  
 3 wires - connector fitting  
 bulb  $\varnothing$  3x97 mm  
 cable length 2100 mm - handle length 40 mm  
 with fastening coupling M16



FRIMA 8700097

**5062804 PENETRATION PROBE**  
 3 wires - connector fitting  
 probe length 98 mm  
 cable length 2450 mm  
 with fastening coupling M16



FRIMA 4004040P

**3397052 PENETRATION PROBE PT100**  
 2 wires - probe length 180 mm  
 cable length 3000 mm  
 with fastening coupling M12



FRIMA 30250608

FRIMA 30350607

FRIMA 30350703

FRIMA 30350604

FRIMA 30350608

FRIMA 30350605

FRIMA 30350623

**3397071 PENETRATION PROBE PT100**  
 2 wires - probe for hot compartment  
 probe length 100 mm  
 silicone cable length 1500 mm



FRIMA 30140151

**3397056 PROBE PENETRATION TCK**  
 2 wires - probe length 175 mm  
 cable length 3000 mm  
 with fastening coupling M10



FRIMA 3035.0713

FRIMA 30350702

FRIMA 30350709

FRIMA 30350712

FRIMA 30350700

FRIMA 30350704

FRIMA 30350710

FRIMA 30350701

FRIMA 30350708

FRIMA 30350711

**3397133 PROBE PENETRATION TCK**  
 10 wires - connector fitting  
 probe length 100 mm  
 cable length 1800 mm  
 with fastening coupling M12



FRIMA 30350714

FRIMA 30350717

FRIMA 30350715

FRIMA 30350717ET

FRIMA 30350716

**3397134 PROBE PENETRATION TCK**  
 8 wires - connector fitting  
 probe length 110 mm  
 cable length 2200 mm  
 with fastening coupling M15



FRIMA 4000293

FRIMA 4000606P

FRIMA 4000294

FRIMA 4001604

FRIMA 4000606

FRIMA 4004097P



Suitable for:

Suitable for:

**3397157 PROBE PENETRATION TCK**  
 3 wires - connector fitting  
 bulb  $\varnothing$  3x97 mm  
 cable length 2100 mm - handle length 40 mm  
 with fastening coupling M16

**3397158 PROBE PENETRATION TCK**  
 8 wires - connector fitting  
 bulb  $\varnothing$  3x97 mm  
 cable length 2100 mm - handle length 40 mm  
 with fastening coupling M15  
 for Convection oven (FRIMA) FSCC201



FRIMA 4002102

FRIMA 4002102P

FRIMA 4002103

FRIMA 4002100

FRIMA 4002100P

FRIMA 4002101

**5035087 PROBE PENETRATION TCK**  
 2 wires- connector fitting  
 probe length 100 mm  
 cable length 2300 mm  
 with fastening coupling M15



FRIMA 4000296

FRIMA 4000297

FRIMA 4000608

FRIMA 4000608P

FRIMA 4001603

## Potentiometers

**3057234 COMPLETE POTENTIOMETER WITH CABLE**  
 D-shaped pin 6x4.6 mm

**3057235 POTENTIOMETER**  
 D-shaped pin 6x4.6 mm



FRIMA 4000464

FRIMA 30400268

**5054686 POTENTIOMETER**  
 D-shaped pin  $\varnothing$  6x4.6 mm

**3057106 POTENTIOMETER SELECTOR SWITCH**  
 D-shaped pin 6x4.6 mm - pin length 27 mm  
 for hot air



FRIMA 30400156

FRIMA 30400150



Suitable for:

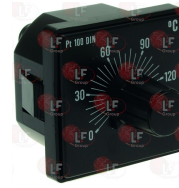
**3057107 POTENTIOMETER SELECTOR SWITCH**  
pin  $\varnothing$  6 mm - pin length 36 mm  
for penetration probe



FRIMA 30400151

Suitable for:

**3157002 POTENTIOMETER 0-150°C**  
probe type PT100 (not included)



FRIMA 30350600

**3057231 SELECTOR SWITCH ENCODER COMPLETE W/CABLE**  
pin  $\varnothing$  6 mm



FRIMA 4000404

**3057232 SELECTOR SWITCH ENCODER COMPLETE W/CABLE**  
D-shaped pin 6x4.6 mm



FRIMA 30400258

FRIMA 88171303

## Pressure switches

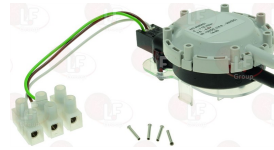
**3320185 GAS PRESS.SWITCH CONTROL BOX HONEYWELL**  
pressione 13-15,5 mbar  
room temperature -10+70°C - 5A 250V  
for GAS OVENS from 10/97 to 11/00



FRIMA 1003361

FRIMA 30171004

**3390302 HUMIDIFICATION PRESSURE SWITCH 0-10 mBAR**  
complete with cable



FRIMA 30171001

FRIMA 30171002

FRIMA 86801018

**3319522 PRESSURE SWITCH 0.2/3 mbar 5A 250V**



FRIMA 30171003

FRIMA 30171006

FRIMA 30171010

**3320157 PRESSURE SWITCH 0.35/0.15 BAR 6A 250V**



FRIMA 30161418

FRIMA 30161441

**5069480 PRESSURE SWITCH 0-0.30 BAR 10A 12V**



FRIMA 30171011



## Probes

**3397152 OLIVE FOR PROBE**



FRIMA 1013497

FRIMA 30140162

**3397023 PROBE TEMPERATURE TCK**

twin wire  
probe length 110 mm  
cable length 290 mm  
with fastening coupling M8x1 mm



FRIMA 1003351

FRIMA 30141000

**3397025 PROBE TEMPERATURE TCK**  
twin wire  
probe length 120 mm  
cable length 1800 mm  
with fastening coupling M8x1 mm



FRIMA 30141001  
FRIMA 30141004  
FRIMA 30141010

FRIMA 30141002  
FRIMA 30141005

FRIMA 30141003  
FRIMA 30141009

**3397084 PROBE TEMPERATURE TCK**  
2 wires - for moist measurement  
probe length 100 mm  
cable length 2000 mm  
with fastening coupling M8x1 mm



FRIMA 30140161

FRIMA 30141007

FRIMA 87201002

**3397153 PROBE TEMPERATURE TCK**  
twin wire - connector fitting  
bent bulb dimensions 53/20 mm  
cable length 2550 mm



FRIMA 4000287

FRIMA 4000398

FRIMA 8700058

**3397152 OLIVE FOR PROBE**



FRIMA 1013497

FRIMA 30140162

**3397155 PROBE TEMPERATURE TCK**  
twin wire  
probe with eyelet  
silicone cable length 1800 mm



FRIMA 4000290

FRIMA 4000399

FRIMA 8700470

**3397156 PROBE TEMPERATURE TCK**  
twin wire - connector fitting  
cable length 1600 mm



FRIMA 4001095



Suitable for:

# FRIMA



**3397196 PROBE TEMPERATURE TCK**  
twin wire - connector fitting  
probe length 118 mm  
silicone cable length 1500 mm



FRIMA 1003414

FRIMA 4000291

Suitable for:

**3397197 PROBE TEMPERATURE TCK**  
twin wire - connector fitting  
probe length 110 mm  
silicone cable length 1280 mm  
with fastening coupling M8x1 mm



FRIMA 4000395

FRIMA 4000594

**5068082 PROBE TEMPERATURE TCK**  
connector fitting  
probe length 175 mm  
cable length made of silicone 1470 mm



FRIMA 4000292

**3397082 PROBE TEMPERATURE WITH BYPASS PT100**  
2 wires- for steam generator  
probe length 80 mm  
cable length 1800 mm



FRIMA 30140120

FRIMA 30140150

FRIMA 30140152

FRIMA 30140159

**3397132 SENSOR CDS 105 mm**



FRIMA 30171050

FRIMA 4400211

**5049377 SENSOR CDS 105 mm WITH CABLE**  
cable length 1300 mm



FRIMA 4400670

**5037756 SENSOR WITH CABLE 78 mm -  $\phi$  3/4"MF**  
complete with gasket  
cable length 1700 mm



FRIMA 5000934

FRIMA 5001523

FRIMA 8701272

**3397072 TEMPERATURE PROBE TCK**  
2 wires  
probe length 130 mm  
silicone cable length 2000 mm



FRIMA 30140160

FRIMA 87201003



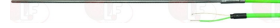


Suitable for:

Suitable for:

**3397083 TEMPERATURE PROBE TCK**  
2 wires -for steam generator  
probe length 100 mm  
cable length 2000 mm

**7106182 THERMOCOUPLE SIMPLE**



FRIMA 30140165  
FRIMA 30141013  
FRIMA 4001094

FRIMA 30141011  
FRIMA 30141014

FRIMA 30141012  
FRIMA 4000291

FRIMA 4000624

## Relays

**3351016 RELAY CRYDOM SOB667330**

**5047903 RELAY SETUP KIT MULTIFUNCTION MK7850N**  
adjustment 1" ÷ 300h



FRIMA 30280533  
FRIMA 4000453P

FRIMA 30280533P  
FRIMA 4001589

FRIMA 4000453

FRIMA 30350401

**3351101 TIME LIMIT RELAY CROUZET 0.7A 230V**  
timer 1"

**3351102 TIME LIMIT RELAY 80.11 16A 240V 50/60Hz**  
1 switching contact  
slow release on excitation



FRIMA 30350404

FRIMA 30350453

**3351109 TIME LIMIT RELAY 80.41 16A 240V 50/60Hz**  
multifunctional  
1 control contact

**3351116 TIME LIMIT RELAY 82.11 24/240V 50/60Hz**  
1 switching contact  
slow release on excitation  
timer 0.05" ÷ 10h



FRIMA 30350402

FRIMA 30350401



Suitable for:

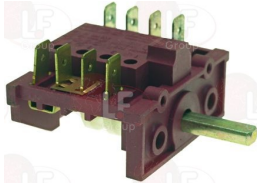
# FRIMA



Suitable for:

## Rotary switches

**3057102 SELECTOR SWITCH 0-1 POSITIONS**  
4 cams - contact capacity 16A 250V - max 150°C  
D-shaped pin ø 6x4.ø 6 mm



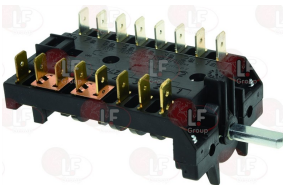
FRIMA 30161620

**3057103 SELECTOR SWITCH 0-3 POSITIONS**  
contact capacity 16A 250V - max 150°C  
D-shaped pin ø 6x4.6 mm



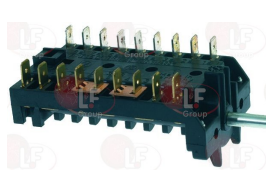
FRIMA 30161640

**3057233 SELECTOR SWITCH 0-3 POSITIONS**  
contact capacity 16A 250V - max 150°C  
D-shaped pin ø 6x4.ø 6 mm



FRIMA 30161610

**3057212 SELECTOR SWITCH 0-4 POSITIONS**  
contact capacity 16A 250V - 10A 400V - max 150°C  
D-shaped pin ø 6x4.6 mm



FRIMA 30161613

**3057101 SELECTOR SWITCH 3 POSITIONS**  
contact capacity 16A 250V - max 150°C  
D-shaped pin ø 6x4.ø 6 mm



FRIMA 30161300

**3057104 SELECTOR SWITCH 5 POSITIONS**  
2 cams with board  
contact capacity 16A 250V - max 150°C  
D-shaped pin ø 6x4.6 mm



FRIMA 30161600

FRIMA 30161630

FRIMA 30161631

## Solenoid valves

**3120274 COIL MULLER 220/240V 50/60Hz**  
max. temperature 90°C  
with cable length 2000 mm



FRIMA 30020324

FRIMA 30020325

FRIMA 30020329

**3120596 SOLEN. VALVE ELBITYPE 329 1 WAY 180°**  
240V 50/60Hz - max. temperature 90°C  
inlet 3/4" - outlet ø 10.5 mm



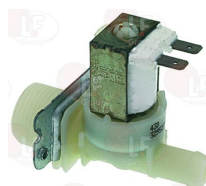
FRIMA 5000316

**3120595 SOLEN. VALVE ELBITYPE 349 2 WAY 180°**  
230V 50/60Hz - max. temperature 90°C  
inlet 3/4" - two outlets ø 10.5 mm



FRIMA 5000138

**3120009 SOLEN. VALVE ELBITYPE 351 1 WAY 180°**  
220/240V 50/60Hz - max. temperature 90°C  
inlet 3/4" - outlet ø 13.5 mm



FRIMA 30020331



Suitable for:

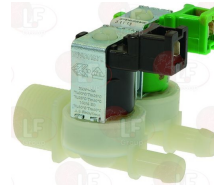
Suitable for:

**3120011 SOLEN. VALVE ELBI TYPE 353 2 WAY 180°**  
 220/240V 50/60Hz - max. temperature 90°C  
 inlet 3/4" - two outlets ø 13.5 mm



FRIMA 30020330

**3120363 SOLEN. VALVE INVENSYS 2 WAY 180°**  
 230/240V 50/60Hz - max. temperature 90°C  
 inlet 3/4" - two outlets ø 10.5 mm



FRIMA 5000138

**3120014 SOLENOID VALVE ELBI TYPE 369 3-WAY 180°**  
 220/240V 50/60Hz - max temperature 90°C  
 inlet 3/4" - three outlets ø 10.5 mm



FRIMA 30020315

**3120550 SOLENOID VALVE INVENSYS 1 WAY 180°**  
 240V 50/60Hz 6W - max. temperature 90°C  
 inlet 3/4" - outlet ø 10.5 mm



FRIMA 5000139

FRIMA 5000319

FRIMA 5001146

**3523088 SOLENOID VALVE INVENSYS 1-WAY 180°**  
 240V 50/60Hz - max. temperature 90°C  
 inlet 3/4" - outlet ø 10.5 mm



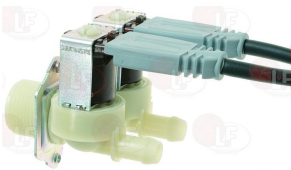
FRIMA 5000316

**5032042 SOLENOID VALVE INVENSYS 180°**  
 240V 50/60Hz - max. temperature 90°C  
 inlet da 3/8" - outlet ø 3/8"  
 complete with bracket, clamp and probes



FRIMA 30020343ET

**3120398 SOLENOID VALVE INVENSYS 2 WAY 180°**  
 220/240V 50/60Hz - max temperature 90°C  
 inlet 3/4" - two outlets ø 10.5 mm  
 with cable length 2000 mm



FRIMA 30020304

**3120274 COIL MULLER 220/240V 50/60Hz**  
 max. temperature 90°C  
 with cable length 2000 mm



FRIMA 30020324

FRIMA 30020325

FRIMA 30020329

**3120603 SOLENOID VALVE INVENSYS 2-WAY 180°**  
 200/240V 50/60Hz - max. temperature 90°C  
 inlet 3/4" - two outlets ø 10.5 mm  
 complete with 2 clamps and probes



FRIMA 30020330ET

**5037763 SOLENOID VALVE INVENSYS 3-WAY 180°**  
 240V 50/60Hz - max. temperature 90°C  
 inlet 3/4" - three outlets ø 10.5 mm  
 1 outlet with white adjuster  
 complete with 3 clamps



FRIMA 5001050



Suitable for:

Suitable for:

**3120264 SOLENOID VALVE MULLER 3-WAY 180°**  
 220/240V 50/60Hz - max. temperature 90°C  
 inlet 3/4" - three outlets  $\varnothing$  10.5 mm  
 with cable length 2000 mm

**3120597 VALVE 230V  $\varnothing$  11.5 mm**  
 valve 180° - 220/240V 50/60Hz - max 90°C  
 inlet 3/4" - outlet  $\varnothing$  11,5 mm  
 with cable length 2000 mm



FRIMA 30020311

FRIMA 30020327

FRIMA 30020328

FRIMA 30020305

## Spare parts for pumps

**3122359 HOSE FOR PUMP**

**3122360 MANIFOLD FOR PUMP**



FRIMA 21181000

FRIMA 20220110

## Sparking and detection plugs

**3020375 ROUND SPARKING PLUG  $\varnothing$  7.5x60 mm**  
 overall length 78 mm

**7102451 SPARKING PLUG ROUND  $\varnothing$  7x63 mm**  
 overall length 79 mm



FRIMA 1004804

FRIMA 20680300

FRIMA 20680152

**3806004 SPARKING PLUG ROUND  $\varnothing$  9x117 mm**  
 complete with cable length 600 mm

**3786287 GASKET FOR SPARKING PLUG 39x18 mm**

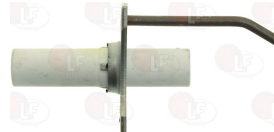


FRIMA 4400251

FRIMA 4400250

**3806005 SPARKING PLUG ROUND  $\varnothing$  9x166 mm**  
 complete with cable length 600 mm

**5036877 SPARKING PLUG ROUND  $\varnothing$  9x42 mm**  
 overall length 63 mm  
 plate 30x18 mm



FRIMA 4400249

FRIMA 4400249P

FRIMA 7400235

Suitable for:

**5039265 SPARKING PLUG ROUND  $\varnothing$  9x96 mm**  
 overall length 100 mm  
 complete with cable - length 360 mm



FRIMA 7400230

FRIMA 7400230P

Suitable for:

**5021579 SPARKING PLUG 66x26 mm**  
 overall dimensions 80x26 mm



FRIMA 20680153

## Switches

**5037259 PUSH BUTTON WHITE HOT AIR 27x27 mm**  
 silk screen printing "reset"  
 mounting hole  $\varnothing$  22 mm



FRIMA 30161354

**3221258 OVEN NEON LAMP Ba9s 1.5mA 230V**  
 dimensions  $\varnothing$  10x28 mm



FRIMA 30240301

**3319803 PUSH BUTTON WHITE 3A 240V**  
 silk screen printing "reset"  
 with indicator light  
 1 contact NC  
 1 contact NO  
 mounting hole  $\varnothing$  22 mm



FRIMA 30161350

**3319802 PUSH BUTTON WHITE STEAM 27x27 mm**  
 silk screen printing "reset"  
 mounting hole  $\varnothing$  22 mm



FRIMA 30161353

**3221258 OVEN NEON LAMP Ba9s 1.5mA 230V**  
 dimensions  $\varnothing$  10x28 mm



FRIMA 30240301



Suitable for:

**3319803 PUSH BUTTON WHITE 3A 240V**  
silk screen printing "reset"  
with indicator light  
1 contact NC  
1 contact NO  
mounting hole  $\varnothing$  22 mm



FRIMA 30161350

# FRIMA



Suitable for:

**3319803 PUSH BUTTON WHITE 3A 240V**  
silk screen printing "reset"  
with indicator light  
1 contact NC  
1 contact NO  
mounting hole  $\varnothing$  22 mm



FRIMA 30161350

**5042498 PUSH BUTTON 2-POLE BLACK 2A 250V**  
1 contact NC  
1 contact NO  
mounting hole  $\varnothing$  18 mm



FRIMA 30161352

## Tangential and radial fans

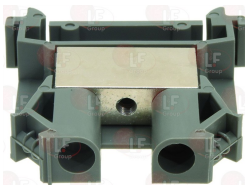
**3526962 TANGENTIAL FAN 120 mm LH**  
25W 230V 50/60Hz -  $\varnothing$  60 mm  
operating temperature  $-30^{\circ}+100^{\circ}\text{C}$



FRIMA 31011004

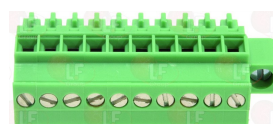
## Terminal blocks

**7150250 CLAMP 1 POLE**  
for cable 1.5÷16 mmq



FRIMA 40011202

**7108129 TERMINAL BOX 10 POLE**

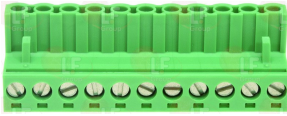


FRIMA 30400262





7110211 TERMINAL BOX 11 POLE



FRIMA 30400198

## Thermostats

**3444406 SINGLE-PHASE THERMOSTAT +60+300°C**  
 D-shaped pin 6x4.6 mm  
 covered capillary length 1500 mm - 16A 230V  
 bulb  $\varnothing$  4x120 mm - with stuffing gland nut M14x1



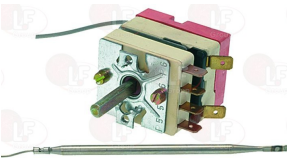
FRIMA 30140166

**3444540 SINGLE-PHASE THERMOSTAT 0-110°C**  
 D-shaped pin  $\varnothing$  6x4.6 mm  
 covered capillary length 1400 mm  
 bulb  $\varnothing$  6x140 mm



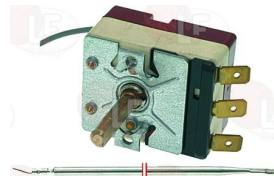
FRIMA 33060301

**3444407 SINGLE-PHASE THERMOSTAT 0-250°C**  
 complete with auxiliary selector switch  
 D-shaped pin  $\varnothing$  6x4.6 mm  
 covered capillary length 3150 mm - 16A 230V  
 bulb  $\varnothing$  4x102 mm  
 for Convection oven electric (FRIMA) - Series CD



FRIMA 30140308

**3444402 SINGLE-PHASE THERMOSTAT 0-300°C**  
 D-shaped pin 6x4.6 mm  
 covered capillary length 1200 mm - 16A 250V  
 bulb  $\varnothing$  3x160 mm



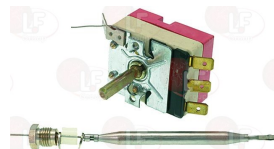
FRIMA 30140311

**3444403 SINGLE-PHASE THERMOSTAT 0-300°C**  
 D-shaped pin 6x4.6 mm  
 covered capillary length 830 mm - 16A 250V  
 bulb  $\varnothing$  4x100 mm



FRIMA 30140318

**3444401 SINGLE-PHASE THERMOSTAT 100-180°C**  
 D-shaped pin 6x4.6 mm  
 covered capillary length 2420 mm - 16A 250V  
 bulb  $\varnothing$  6x90 mm - with stuff.gland coupling M9x1



FRIMA 30140314

**5048196 SINGLE-PHASE THERMOSTAT 157°C**  
 with manual reset  
 covered capillary length 1400 mm - 16A 250V  
 bulb  $\varnothing$  6x65 mm



FRIMA 4002515

**3444591 SINGLE-PHASE THERMOSTAT 183°C**  
 with manual reset  
 covered capillary length 1460 mm - 16A 250V  
 bulb  $\varnothing$  6x61 mm



FRIMA 4001329



Suitable for:

# FRIMA



**3444400 SINGLE-PHASE THERMOSTAT 30-90°C**  
D-shaped pin 6x4.6 mm  
covered capillary length 1500 mm - 16A 250V  
bulb ø 3x262 mm



FRIMA 30140312

**3444405 SINGLE-PHASE THERMOSTAT 360°C**  
with manual reset  
covered capillary length 1170 mm - 16A 250V  
bulb ø 4x120 mm - with stuff.gland nut M14x1



FRIMA 30140310

FRIMA 30140322

**3444781 SINGLE-PHASE THERMOSTAT 360°C**  
with automatic reset  
covered capillary length 1170 mm - 16A 230V  
bulb ø 4x95 mm - with stuffing gland nut M14x1



FRIMA 30140326

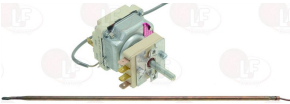
**3444816 SINGLE-PHASE THERMOSTAT 365°C**  
with manual reset  
covered capillary length 1200 mm - 16A 250V  
bulb ø 5x70 mm - with stuffing gland nut M9x1



FRIMA 4000605

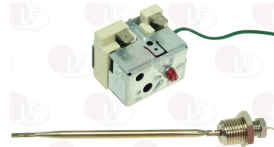
FRIMA 4001482

**40K0662 THERMOSTAT SINGLE-PHASE 100-470°C**  
complete with selector switch  
D-shaped pin ø 6x4.6 mm  
capillary length covered 1100 mm  
bulb ø 4x225 mm



FRIMA 4000799

**7110437 THERMOSTAT SINGLE-PHASE 360°C**  
with manual reset  
length capillary covered 1200 mm - 16A 250V  
bulb ø 4x103 mm - with stuffing gland fitting M8x1  
with complete tank seal fitting 1/4"



FRIMA 30140324

**7102869 THERMOSTAT THREE-PHASE 650°C**  
with manual reset  
length capillary 1200 mm - 20A 400V  
bulb ø 4x230 mm



FRIMA 4000638

**3444959 THREE-PHASE THERMOSTAT 220°C**  
with manual reset  
capillary length 1000 mm  
bulb ø 6x90 mm

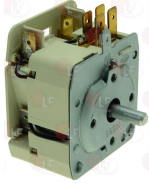


FRIMA 4000673



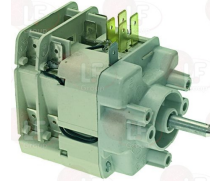
## Timers

**3446091 TIMER 100 MINUTES MS65**  
 mechanical timer with manual position  
 manual winding cycle 100 minutes  
 bipolar timer with contact capacity 16(3)A 250V  
 max. temperature 125°C  
 D-shaped pin  $\varnothing$  6x4.6 mm



FRIMA 30130109

**3446039 TIMER 120 MINUTES MS65**  
 120 minute manually set cycle  
 with manual position  
 contact capacity 16(4)A 250V 50Hz  
 max temperature 100°C  
 D-shaped pin  $\varnothing$  6x4.6 mm



FRIMA 30130104

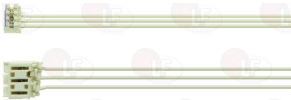
**3446090 TIMER 120 MINUTES MS65**  
 manually set mechanical timer  
 manual position possible  
 manually set cycle 120 minutes  
 2 poles with contact capacity 16(4)A 250V  
 max temperature 100°C  
 D-shaped pin  $\varnothing$  6x4.6 mm



FRIMA 30130101

## Transformers

**7102978 CABLE CONNECTION TRANSFORMER 1050 mm**



FRIMA 4000210  
 FRIMA 4002385

FRIMA 4000231

FRIMA 4001543

**7107120 TRANSFORMER 0-200-208-220-230-240-250V**  
 primary voltage 0-200-208-220-230-240-250V 50/60Hz  
 secondary voltage 17Vdc  
 ambient temperature 0÷60°C  
 screw terminal box



FRIMA 8700461

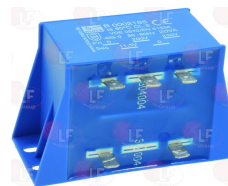
**3739016 TRANSFORMER 0-200-230V/11.5V 10VA**  
 primary voltage 0-200-230V 50/60Hz  
 secondary voltage 11.5Vca 10VA  
 ambient temperature 0÷60°C  
 faston terminal box



FRIMA 1011196

FRIMA 30370205

**3739032 TRANSFORMER 0-200-230V/11.5V 20VA**  
 primary voltage 0-200-230V 50/60Hz  
 secondary voltage 11.5V 20VA  
 ambient temperature 0÷60°C  
 faston terminal box



FRIMA 30370204



Suitable for:

# FRIMA



**3739017 TRANSFORMER 10VA**  
 primary voltage 0-200-208-220-230-240-250V  
 secondary voltage 11.5V 10VA  
 room temperature 0÷60°C  
 faston terminal box



FRIMA 4000278

**3739018 TRANSFORMER 20VA**  
 primary voltage 0-200-208-220-230-240-250V  
 secondary voltage 11.5V 20VA  
 room temperature 0÷60°C  
 faston terminal box



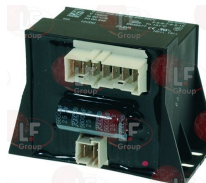
FRIMA 4000333

**5048175 TRANSFORMER 200-230V/21-0-21V 35VA**  
 primary voltage 200-230V 50/60Hz  
 secondary voltage 21-0-21V 35VA  
 ambient temperature 0÷60°C  
 faston terminal box



FRIMA 30370203

**3739019 TRANSFORMER 21.6VA**  
 primary voltage 200-208-220-230-240-250V 50/60Hz  
 secondary voltage 12V 21.6VA  
 room temperature 0÷130°C  
 faston terminal box



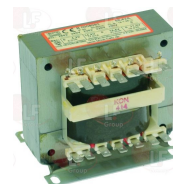
FRIMA 4000592

**3739003 TRANSFORMER 241-230-219-0V/24V 48VA**  
 primary voltage 241-230-219-0V 50/60Hz  
 secondary voltage 24V 48VA  
 room temperature 0÷40°C  
 screw terminal box



FRIMA 30370242

**3739004 TRANSFORMER 68.4VA**  
 primary voltage 260/240/230/220/200/0V 50/60Hz  
 secondary voltage 0-4.2V 14.4-014.4V 0-11.5V  
 room temperature 0÷65°C  
 faston terminal box



FRIMA 30370240

**3739028 TRANSFORMER 70VA**  
 primary 0-200-208-220-230-240-250V  
 secondary 2.1-0-2.1V 0-11.5V 0-12V 70VA  
 room temperature 0÷50°C  
 faston terminal box



FRIMA 4000277



## Tubing and hoses

**3450177 DRAIN PIPE  $\varnothing$  20x62 mm - 2 PCS**  
for drip tray



FRIMA 5000303

**7108029 DRAIN PIPE OVEN STEAM GENERATOR**  
length 345 mm  
external  $\varnothing$  29 mm - internal  $\varnothing$  22 mm



FRIMA 4400212

FRIMA 4400234

**5049975 DRAIN PIPE WITH HOSES**  
length 565 mm  
external  $\varnothing$  20 mm - internal  $\varnothing$  15 mm



FRIMA 1012588

FRIMA 5000556

FRIMA 5001613

**5014636 HOSE SILICONE**  
external  $\varnothing$  50 mm  
internal  $\varnothing$  42 mm  
length 150 mm



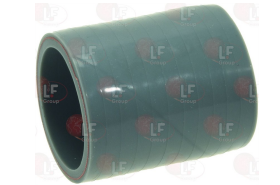
FRIMA 20670202

**5015684 HOSE SILICONE**  
external  $\varnothing$  65 mm  
internal  $\varnothing$  60 mm  
length 135 mm



FRIMA 21121301

**5015687 HOSE SILICONE**  
external  $\varnothing$  52 mm  
internal  $\varnothing$  42 mm  
length 60 mm



FRIMA 20670201

**5016197 HOSE SILICONE**  
external  $\varnothing$  50 mm  
internal  $\varnothing$  42 mm  
length 200 mm



FRIMA 20670203

**5028005 HOSE SILICONE**  
external  $\varnothing$  55 mm  
internal  $\varnothing$  48 mm  
length 87 mm



FRIMA 21121306

FRIMA 21181250

**5032994 HOSE SILICONE**  
external  $\varnothing$  87 mm  
internal  $\varnothing$  78 mm  
length 80 mm



FRIMA 21121307

**5059781 HOSE SILICONE**  
external  $\varnothing$  79 mm  
internal  $\varnothing$  70 mm  
length 55 mm



FRIMA 4400362



Suitable for:

# FRIMA

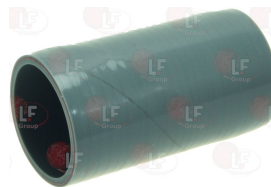


**7103386 HOSE SILICONE**  
external  $\varnothing$  30 mm  
internal  $\varnothing$  22 mm  
length 80 mm



FRIMA 21121310

**7105545 HOSE SILICONE**  
external  $\varnothing$  70 mm  
internal  $\varnothing$  60 mm  
length 120 mm



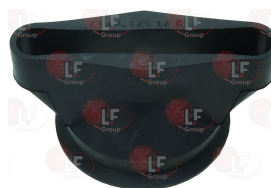
FRIMA 20670401

**7107674 HOSE SILICONE**  
external  $\varnothing$  58 mm  
internal  $\varnothing$  50 mm  
length 100 mm



FRIMA 5400086

**5047708 HOSE UPPER AERATION MADE OF RUBBER**  
external  $\varnothing$  130/90 mm  
internal  $\varnothing$  123/75 mm  
height 60 mm



FRIMA 21181201

**3450149 OUTLET PIPE FOR OVEN WASH PUMP**  
length 130 mm  
external  $\varnothing$  28/24 mm - internal  $\varnothing$  22/19 mm



FRIMA 5600166

**3450146 OUTLET PIPE FOR OVEN WASHING PUMP**  
length 195 mm  
external  $\varnothing$  28/25 mm - internal  $\varnothing$  21/18 mm



FRIMA 5600175

**5058774 OUTLET PIPE OVEN BOILER**  
length 730 mm  
external  $\varnothing$  29 mm - internal  $\varnothing$  22 mm



FRIMA 4400242

**5064497 OUTLET PIPE OVEN BOILER**  
length 350 mm  
external  $\varnothing$  29 mm - internal  $\varnothing$  22 mm



FRIMA 4400210

**7100320 OUTLET PIPE OVEN BOILER**  
length 470 mm  
external  $\varnothing$  29 mm - internal  $\varnothing$  22 mm



FRIMA 4400241

**7104042 OUTLET PIPE OVEN BOILER**  
length 650 mm  
external  $\varnothing$  29 mm - internal  $\varnothing$  22 mm



FRIMA 4400231

FRIMA 4400238





Suitable for:

**3450178 OUTLET PIPE STEAM GENERATOR**  
length 370 mm  
external  $\varnothing$  30 mm - internal  $\varnothing$  22 mm



FRIMA 21121302

Suitable for:

**3450182 OUTLET PIPE STEAM GENERATOR**  
length 480 mm  
external  $\varnothing$  28 mm - internal  $\varnothing$  23 mm



FRIMA 21121303

**5026668 OUTLET PIPE STEAM GENERATOR**  
length 560 mm  
external  $\varnothing$  29 mm - internal  $\varnothing$  22 mm



FRIMA 4400233

**7108157 OUTLET PIPE STEAM GENERATOR**  
length 650 mm  
external  $\varnothing$  29 mm - internal  $\varnothing$  22 mm



FRIMA 21121305

**7150243 OUTLET PIPE STEAM GENERATOR**  
length 480 mm  
external  $\varnothing$  29 mm - internal  $\varnothing$  22 mm



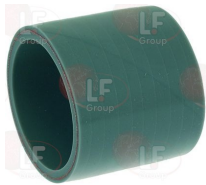
FRIMA 21121304

**5054503 PIPE DRAIN WITH HOSES**  
length 575 mm  
external  $\varnothing$  20 mm - internal  $\varnothing$  15 mm



FRIMA 5001191

**3450179 SILICONE STEAM HOSE**  
external  $\varnothing$  60 mm  
internal  $\varnothing$  50 mm  
length 50 mm



FRIMA 21121006

**7105546 STEAM PIPE 580 mm**  
external  $\varnothing$  50 mm - internal  $\varnothing$  42 mm



FRIMA 20670205

**3450147 SUCTION PIPE FOR OVEN WASHING PUMP**  
length 250 mm  
external  $\varnothing$  29 mm - internal  $\varnothing$  22 mm



FRIMA 5600176

**3450148 SUCTION PIPE FOR OVEN WASHING PUMP**  
length 160 mm  
external  $\varnothing$  29 mm - internal  $\varnothing$  22 mm



FRIMA 5600188



Suitable for:

# FRIMA



Suitable for:

## 5047237 SUCTION PIPE FOR OVEN WASHING PUMP

length 115 mm  
external  $\varnothing$  29 mm - internal  $\varnothing$  22 mm

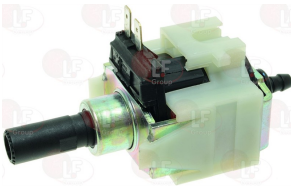


FRIMA 5600120

## Vibrating pumps

### 3331004 VIBRATORY PUMP 46-60/38-54W 208/240V

50/60Hz  
connections  $\varnothing$  1/8" -  $\varnothing$  7 mm  
PUMP CEME E51210EN19240C8



FRIMA 30021003

FRIMA 87201526

### 3122469

### VIBRATORY SOLENOID VALVES KIT 230V

complete with water - pipes - bracket



FRIMA 87201521

## Wash arms for ovens

### 3743376 OVEN WASHING ARM

complete with nozzles



FRIMA 86552100

FRIMA 87101316

### 3743377

### OVEN WASHING ARM

complete with nozzles



FRIMA 86552101

### 5016478 WASH ARM OVEN 130 mm

complete with nozzles



FRIMA 85141346

## Washing showers for ovens

### 5019363 HOSE STAINLESS STEEL $\varnothing$ 1/2" FF 280 cm



FRIMA 20670601



Suitable for:

# FRIMA



Suitable for:

## Watertight seals and rings

**3786369 MAIN SHAFT SEALING GASKET**  
external  $\varnothing$  37 mm - internal  $\varnothing$  24.5 mm  
thickness 4 mm






















FRIMA 50010211

*The data herewith contained may change without notice and LF SpA cannot be held responsible for possible errors stated or resulting by the use of this document. All rights reserved. No part of this publication may be reproduced without written permission by LF SpA.*



## Distributing Components, Spare Parts & Accessories in original quality worldwide

- 
-  **LF SpA HEADQUARTERS**  
via Voltri, 80 - 47522 Cesena (FC) ITALY  
Tel. +39 0547 34 11 11 - Fax +39 0547 34 11 10  
[www.lfircambi724.it](http://www.lfircambi724.it) - [www.lfircambi724.mobi](http://www.lfircambi724.mobi)  
[info@lfircambi.it](mailto:info@lfircambi.it)  
Export Dept.: Tel. +39 0547 34 11 50 - Fax: +39 0547 34 11 55  
[www.lfspareparts724.com](http://www.lfspareparts724.com) - [www.lfspareparts724.mobi](http://www.lfspareparts724.mobi)  
[export@lfspareparts.com](mailto:export@lfspareparts.com)
-  **LF SpA HOUSEHOLD COMPONENTS DIVISION**  
Via Padriciano, 34149 Trieste - Italia - AREA Science Park  
Tel. +39 0547 34 12 42 - Fax +39 0547 34 12 48  
[www.lfspareparts724.com](http://www.lfspareparts724.com) - [www.lfspareparts724.mobi](http://www.lfspareparts724.mobi)  
[info@lfspareparts.com](mailto:info@lfspareparts.com)
-  **EPGC Sas FRANCE**  
13, Rue des Forts - 59960 Neuville en Ferrain  
Tel. +33 (0)3 20 25 06 21  
Fax +33 (0)3 20 25 34 12  
[www.epgc.com](http://www.epgc.com)  
[www.epgc724.mobi](http://www.epgc724.mobi)  
[epgc@epgc.com](mailto:epgc@epgc.com)
-  **LF GmbH GERMANY**  
Junkersstrasse, 3 - D-82178 Puchheim - München  
Tel. +49 89 89 45 78 66  
Fax +49 89 89 45 78 88  
[www.lfersatzteile724.de](http://www.lfersatzteile724.de)  
[www.lfersatzteile724.mobi](http://www.lfersatzteile724.mobi)  
[info@lfersatzteile.de](mailto:info@lfersatzteile.de)
-  **LF China REPUBLIC OF CHINA**  
Room 403, No.2, Huadu Mansion, Lane 422, Huanghua Rd.  
Minhang Dist. - 201103 Shanghai  
Tel. +86 (0)21 33 53 66 31  
Fax +86 (0)21 33 53 66 32  
[www.lfspareparts724.com](http://www.lfspareparts724.com)  
[www.lfspareparts724.mobi](http://www.lfspareparts724.mobi)  
[china@lfspareparts.com](mailto:china@lfspareparts.com)
-  **OOO LF RUSSIAN FEDERATION**  
Ul. Anatoliya Zhivova, 8 - office 1 - 123100 Moscow  
Tel./Fax +7 495 725 26 53  
[www.lfspareparts724.ru](http://www.lfspareparts724.ru)  
[www.lfspareparts724.mobi](http://www.lfspareparts724.mobi)  
[info@lfspareparts.ru](mailto:info@lfspareparts.ru)
-  **LF Repuestos Horeca S.L.U. SPAIN**  
Poligono Industrial Carpetania - C/Miguel Faraday, 8 - 28906 Getafe  
Tel. +34 91 477 91 00  
Fax +34 91 477 90 81  
[www.lfrepuestos-horeca724.es](http://www.lfrepuestos-horeca724.es)  
[www.lfrepuestos724.mobi](http://www.lfrepuestos724.mobi)  
[info@lfrepuestos.es](mailto:info@lfrepuestos.es)
-  **LF SpA Cesena (IT) Swiss Branch Steinhausen SWITZERLAND**  
Sennweidstrasse, 45 - CH-6312 Steinhausen  
Tel. +41 (0)41 760 15 80-1  
Fax +41 (0)41 760 15 85  
[www.lfersatzteile724.ch](http://www.lfersatzteile724.ch)  
[www.lfersatzteile724.mobi](http://www.lfersatzteile724.mobi)  
[info@lfersatzteile.ch](mailto:info@lfersatzteile.ch)
-  **LF Spare Parts Ltd. UNITED KINGDOM**  
A10a Lakeside Business Park, Broadway Lane  
South Cerney, Gloucestershire GL7 5XL  
Tel. +44 (0)1285 86 16 25  
Fax +44 (0)1285 86 39 49  
[www.lfspareparts724.co.uk](http://www.lfspareparts724.co.uk)  
[www.lfspareparts724.mobi](http://www.lfspareparts724.mobi)  
[info@lfspareparts.co.uk](mailto:info@lfspareparts.co.uk)
- 
-  **AUSTRALIA AND NEW ZEALAND**  
[www.lfspareparts724.com](http://www.lfspareparts724.com)  
[andrea.calvio@lfspareparts.com](mailto:andrea.calvio@lfspareparts.com)
-  **AUSTRIA**  
[www.lfersatzteile724.at](http://www.lfersatzteile724.at)  
[info@lfersatzteile.at](mailto:info@lfersatzteile.at)
-  **BALKAN COUNTRIES**  
[www.lfspareparts724.com](http://www.lfspareparts724.com)  
[matijaramov@lfspareparts.com](mailto:matijaramov@lfspareparts.com)
-  **BALTIC COUNTRIES**  
[www.lfspareparts724.com](http://www.lfspareparts724.com)  
[inara.silina@lfspareparts.com](mailto:inara.silina@lfspareparts.com)
-  **CENTRAL AND EASTERN EUROPE**  
[www.lfspareparts724.cz](http://www.lfspareparts724.cz)  
[jiri.kremla@lfspareparts.cz](mailto:jiri.kremla@lfspareparts.cz)
-  **DENMARK**  
[www.lfspareparts724.dk](http://www.lfspareparts724.dk)  
[michael.leth@lfspareparts.com](mailto:michael.leth@lfspareparts.com)
-  **JAPAN**  
[www.lfspareparts724.jp](http://www.lfspareparts724.jp)  
[hiroshi.ukai@lfspareparts.jp](mailto:hiroshi.ukai@lfspareparts.jp)
-  **SOUTH KOREA**  
[www.lfspareparts724.com](http://www.lfspareparts724.com)  
[fabio.doni@lfspareparts.com](mailto:fabio.doni@lfspareparts.com)
-  **TURKEY**  
[www.lfyedekparca724.com](http://www.lfyedekparca724.com)  
[basar.ergun@lfyedekparca.com](mailto:basar.ergun@lfyedekparca.com)
-  **USA AND CANADA**  
[www.lfspareparts724.us](http://www.lfspareparts724.us)  
[sauro.dallaglio@lfspareparts.us](mailto:sauro.dallaglio@lfspareparts.us)  
[howard.truitt@lfspareparts.us](mailto:howard.truitt@lfspareparts.us)