



Spare parts for:

Ovens



Suitable for:

SILKO



This catalogue is automatically generated.
Therefore, the sequence of the items might
not be always shown at best.

Updates will be issued in case of additions
and/or amendments.

*Suitable **universal spare parts** may not be included*

Rel. 2015-10230845





Suitable for:

SILKO



Suitable for:

Air regulators

3020097 PILOT AERATION REGULATOR
internal \varnothing 7 mm - external \varnothing 9 mm
height 10 mm



SILKO 0101151

Cables for piezo igniters

3001002 IGNITION LEAD 1000 mm
with faston 6.35x0.8 mm for ignition
with faston \varnothing 4 mm for ignition plug



SILKO 0100858

3001016 IGNITION LEAD 1000 mm
with faston \varnothing 2.4 mm for ignition
with faston \varnothing 4 mm for electrode



SILKO CR0688770
SILKO 0109082

SILKO 0101628
SILKO 9303461

SILKO 0108189

Contactors

3351218 CONTACTOR AEG LS7K 18A 230V 7.5Kw
coil 230V 50/60Hz
3 normally open contacts
1 normally open auxiliary contact



SILKO MACM187400

SILKO 0105031

3351219 CONTACTOR AEG LS7K 18A 230V 7.5Kw
coil 230V 50/60Hz
4 normally open contacts
no auxiliary contact



SILKO 0101330

Electrical gas valves and accessories

3526090 ELETROSIT VALVE \varnothing 3/4"FF
inlet \varnothing 3/4" F - outlet \varnothing 3/4" F
thermocouple connection M9x1
maximum gas inlet pressure 50 mbar
pressure adjustment range
3 ÷ 18 mbar
ambient temperature 0 ÷ 60°C
power supply 230V 50Hz
long buttons
pilot connection and LATERAL thermocouple



SILKO 0100883

3440200 TWIN LEAD THERMOPILE \varnothing 9x65 mm
cable length 580 mm - with coupling M11X1



SILKO MA1870712

SILKO 0105109

SILKO 1870712



Suitable for:

3526096 VALVE MICROSWITCH
 maximum load 0.2 A
 for VALVE ELETTROSIT-820 NOVA-824 NOVASIT



SILKO 0100888

SILKO 0109011

Suitable for:

3526079 VALVE 820 NOVA \varnothing 1/2"FF
 inlet \varnothing 1/2" F - outlet \varnothing 1/2" F
 thermocouple fitting M9x1
 maximum gas inlet pressure 60 mbar
 outlet pressure setting range
 3÷30 mbar
 room temperature 0÷70°C
 power supply 230V 50Hz



SILKO 0109010

3526104 VALVE 830 TANDEM \varnothing 1/2"FF
 inlet \varnothing 1/2" F - outlet \varnothing 1/2" F
 maximum gas inlet pressure 60 mbar
 outlet pressure adjustment range
 3÷50 mbar
 with slow start
 room temperature 0÷60°C
 power supply 230V 50Hz
 for Convection oven gas (SILKO)



SILKO 0102481

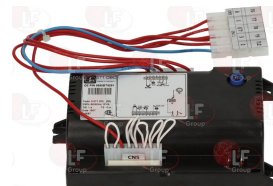
Electronic boxes

3526011 IGNITION CONTROL BOX S4565AF1007
 model HONEYWELL - 220/240V 50/60Hz 4VA



SILKO 63060100

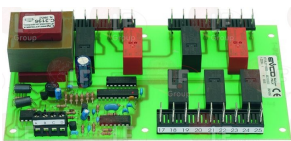
3091005 KIT CONTROL BOX 571 DBC
 complete with cable
 model SIT - 230V 50/60Hz



SILKO 0102480

Electronic printed-circuit boards

3390074 MOTHERBOARD 175x100 mm



SILKO 910059



Suitable for:

SILKO



Suitable for:

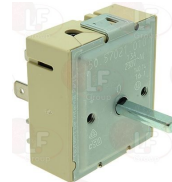
Energy regulators

3350024 ENERGY ADJUSTER
contact capacity 240V 13A
max temperature 125°C
D-shaped pin \varnothing 6x4.6 mm
double rotation direction



SILKO 0108231

3350026 ENERGY ADJUSTER
contact capacity 230V 13A - max temperature 125°C
D-shaped pin \varnothing 6x4.6 mm
double rotation direction
for PYROCERAM. TOPS-SALAMANDERS-POTATO WARMERS



SILKO CM189600
SILKO 0108203

SILKO MACM293900
SILKO 1037108713

SILKO 0105171

Fittings

7102591 FITTING STRAIGHT WITH STEM JG PM061006E
stem \varnothing 6 mm - tube \varnothing 10 mm



SILKO R62090548

Gas taps and accessories

3348036 OLIVE FOR 4 mm \varnothing PIPE
for model PEL 21-22



SILKO 0100778

3348041 PIPE OLIVE \varnothing 16 mm
for model PEL 23



SILKO 0100765

Gas valves and accessories

3526260 EUROSIT VALVE CAP



SILKO 1888200



Heating elements

3355106 HEATING ELEMENT 6000W 230/400V
 for boiler and wash tank
 immersed length 350 mm
 ext. ø flange 72 mm - with bulb-sheathing
 with O-ring gasket ø 67 mm (3186014)
 nut (3528232) and washer (3528238) on request



SILKO

Hinges, catches and accessories

3053003 DOOR HINGE ROLL HOLDER
 distance between holes 95 mm - overall length 118
 height 23 mm



SILKO 0100343

SILKO 100343

3053007 LEFTHAND DOOR HINGE FOR OVEN
 distance between holes 175 mm - overall length 205
 height 160 mm



SILKO BN6A035920

SILKO 0100345

3053003 DOOR HINGE ROLL HOLDER
 distance between holes 95 mm - overall length 118
 height 23 mm



SILKO 0100343

SILKO 100343

3053006 RIGHTHAND DOOR HINGE FOR OVEN
 distance between holes 175 mm - overall length 205
 height 160 mm



SILKO BN6A035910

SILKO 0100346

SILKO 100346

3053003 DOOR HINGE ROLL HOLDER
 distance between holes 95 mm - overall length 118
 height 23 mm



SILKO 0100343

SILKO 100343



Suitable for:

SILKO



Suitable for:

Indicator lights

3221166 INDICATOR LAMP GREEN 400V
ø head 14 mm - ø hole 11.5 mm - 120°C
universal application



SILKO 0101169

3221165 INDICATOR LAMP ORANGE 400V
ø head 14 mm - ø hole 11.5 mm - 120°C
universal application



SILKO 0101167

SILKO 0101170

3221166 INDICATOR LAMP GREEN 400V
ø head 14 mm - ø hole 11.5 mm - 120°C
universal application



SILKO 0101169

Injectors

3500082 GAS JET M10x1 ø 1.90 mm



SILKO 707200

Knobs

3241055 FIXING CLIP
for knob with ø 8 mm hole



SILKO 0101455

Level regulators

3341000 LEVEL ADJUSTER RL30/3ES/F/G
230V 50/60Hz



SILKO 0102477



Microswitches

3240189 MICRO SWITCH M1DX20 10A 250V



SILKO 0101180

SILKO 0103452

SILKO 109062

3240820 MICROSWITCH 16A 250V



SILKO MA1037111300

SILKO 0105025

Pilot burners and accessories

3020085 FITTING FOR SPARKING PLUG FIXING M10x1mm



SILKO 0100620

SILKO 0100807

SILKO 1888400

3020200 FITTING FOR THERMOCOUPLE \varnothing 6.5 mm
thread M10x1



SILKO 0100742

SILKO 0100817

SILKO 1891700

3020083 NUT & OLIVE \varnothing 4 mm



SILKO 1394700

3020084 NUT & OLIVE \varnothing 6 mm



SILKO 0100884

3020082 OLIVE FOR 12 mm \varnothing PIPE



SILKO 0100842

3020081 OLIVE FOR 6 mm \varnothing PIPE



SILKO R62070023

SILKO 0100743

SILKO 0100745

3020112 OLIVE FOR 6 mm \varnothing PIPE



SILKO 0100806



Suitable for:

SILKO



3020036 PILOT BURNER SIT 3 FLAMES
multigas type with nozzle \varnothing 0.35 mm
with 3 position bracket



SILKO CR0588730

Suitable for:

3020054 PILOT JET \varnothing 0.20 mm



SILKO 0100829

SILKO 1415100

3001003 ROUND SPARKING PLUG \varnothing 7x44 mm
male faston M4x1 mm
total length 65 mm



SILKO 0100832

SILKO 1888300

SILKO 224211

3020201 PILOT GAS JET \varnothing 0.14 mm



SILKO 1888000

3020042 PILOT GAS JET \varnothing 0.19 mm



SILKO 1033722000

3020202 PILOT GAS JET \varnothing 0.27 mm



SILKO 0109078

SILKO 1887800

3020054 PILOT JET \varnothing 0.20 mm



SILKO 0100829

SILKO 1415100

3020557 PILOT JET \varnothing 0.20 mm



SILKO 0105144

SILKO 1033719600

3020156 PILOT JET \varnothing 0.25 mm



SILKO 0101153

SILKO 1842300

3020040 PILOT JET \varnothing 0.30 mm



SILKO 0100801

SILKO 0105145

3020041 PILOT JET \varnothing 0.41 mm



SILKO 1033719700

Suitable for:

Suitable for:

3020113 PILOT OLIVE FOR PIPE \varnothing 4 mm



SILKO 0109080

SILKO 1888100

3020106 PILOT WITH 0.25 mm \varnothing JET



SILKO 0101152

**3020079 PIPE FITTING \varnothing 12 mm
thread \varnothing 3/8" F**



SILKO 0100841

SILKO 459300

**3020077 PIPE FITTING \varnothing 4 mm
thread M10x1**



SILKO 0100777

**3020078 PIPE FITTING \varnothing 6 mm
thread M10x1**



SILKO R62060223

SILKO 0100744

SILKO 0100805

3020010 TARGET PILOT BURNER SIT 2 FLAMES
supplied without sparking plug, nozzle and gasket
with thermocouple fitting

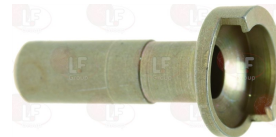


SILKO CM029000

SILKO MACM029000

SILKO 0105054

3020042 PILOT GAS JET \varnothing 0.19 mm



SILKO 1033722000

3001003 ROUND SPARKING PLUG \varnothing 7x44 mm
male faston M4x1 mm
total length 65 mm



SILKO 0100832

SILKO 1888300

SILKO 224211

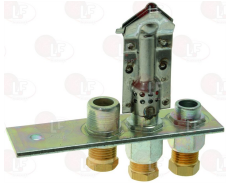


Suitable for:

SILKO



3020011 THREE-FLAME PILOT BURNER
without sparking plug, gas jet
with pipe fitting and pilot pipe olive
with thermocouple connection
with sparking plug fitting



SILKO 0108109

Suitable for:

3001003 ROUND SPARKING PLUG \varnothing 7x44 mm
male faston M4x1 mm
total length 65 mm



SILKO 0100832

SILKO 1888300

SILKO 224211

3020269 THREE-FLAME PILOT BURNER
without sparking plug, gas jet
with pipe fitting and pilot pipe olive
with thermocouple fitting
with sparking plug fitting



SILKO 0101047

3001003 ROUND SPARKING PLUG \varnothing 7x44 mm
male faston M4x1 mm
total length 65 mm



SILKO 0100832

SILKO 1888300

SILKO 224211

3020006 THREE-FLAME PILOT BURNER SIT
multigas with jet \varnothing 0.20 mm
with 3 positions bracket



SILKO 0100822

SILKO 0100824

3020054 PILOT JET \varnothing 0.20 mm



SILKO 0100829

SILKO 1415100

3001003 ROUND SPARKING PLUG \varnothing 7x44 mm
male faston M4x1 mm
total length 65 mm



SILKO 0100832

SILKO 1888300

SILKO 224211



Pressure switches

- 3320053** **ADJUSTABLE PRESSURE SWITCH \varnothing 1/4" M**
 operating pressure regulation 10-50 mbar
 differential 3 mbar
 contact capacity 16(4)A 250V
 max operating temperature 85°C
 for OVEN



SILKO 0102485

Probes

- 3445107** **PTC PVC PROBE 3000 mm**
 2-wire probe temperature range -30+80°C
 bulb \varnothing 6x40 mm



SILKO 995562

Rotary switches

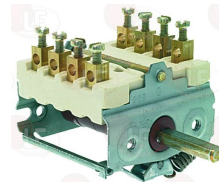
- 3057050** **CONNECTING BRACKET 28x21x16 mm**
 distance between hooking brackets 27 mm
 f/connection between selector switch and thermostat.



SILKO 0101374

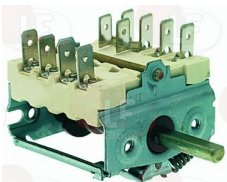
SILKO 0101378

- 3057014** **SELECTOR SWITCH 0-1 POSITIONS**
 contact capacity 16A 250V - max 150°C
 D spindle \varnothing 6x4.6 mm
 back connection for thermostat



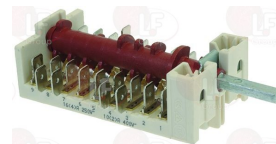
SILKO 0101379

- 3057178** **SELECTOR SWITCH 0-1 POSITIONS**
 contact capacity 16A 250V - max 150°C
 D-shaped pin 6x4.6 mm



SILKO 0108007

- 3057041** **SELECTOR SWITCH 0-4 POSITIONS**
 contact capacity 16A 250V - max 150°C
 D-shaped pin \varnothing 6x4.6



SILKO R65080020



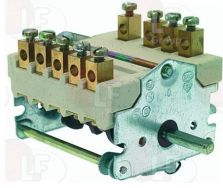
Suitable for:

SILKO



Suitable for:

3057023 SELECTOR SWITCH 0-6 POSITIONS
contact capacity 32A 250V - max 150°C
D shaft ø 6x4.6 mm



SILKO 0101399

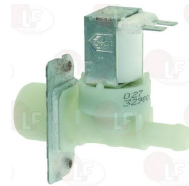
Solenoid valves

3120004 SOLEN. VALVE ELBITYPE 319 1 WAY 90°
220/240V 50/60Hz - max. temperature 90°C
inlet 3/4" - outlet ø 10.5 mm



SILKO 0101341

3120005 SOLEN. VALVE ELBITYPE 329 1 WAY 180°
220/240V 50/60Hz - max. temperature 90°C
inlet 3/4" - outlet ø 10.5 mm



SILKO 2709000

Spark generators

3181002 SPARK GENERATOR 2 OUTLETS
220/240V 50/60Hz



SILKO 0101193

SILKO 0101196

SILKO 0101197

3181003 SPARK GENERATOR 4 OUTLETS
220/240V 50/60Hz



SILKO 0101194

SILKO 0101199

3181004 SPARK GENERATOR 6 OUTLETS
220/240V - 50/60Hz



SILKO 0101195

SILKO 0101200

Sparking and detection plugs

3020169 ROUND DETECTION PLUG ø 7x55 mm
overall length 100 mm
for Convection oven gas (SILKO) GM010H



SILKO R63050350

3001003 ROUND SPARKING PLUG ø 7x44 mm
male faston M4x1 mm
total length 65 mm



SILKO 0100832

SILKO 1888300

SILKO 224211



Suitable for:

3020170 ROUND SPARKING PLUG \varnothing 7x56 mm
 overall length 95 mm
 for Convection oven gas (SILKO) GC010M - GC020M
 GM010H - GM010M - GM010M/SC - GM010P - GM020M
 GM020M/SC - GM020P - GV010H - GV010M
 GV010M/SC - GV010P

Suitable for:

5012742 SPARK PLUG TURNING ROUND \varnothing 7x56 mm
 total length 174 mm



SILKO R63050340

SILKO R63050060

SILKO 0102479

3020060 SPARKING PLUG ROUND \varnothing 7x44 mm
 faston M 4x1 mm
 overall length 82 mm
 model CB505/021 Junkers
 for model P502F



SILKO 0100830

SILKO 0100831

SILKO 0108194

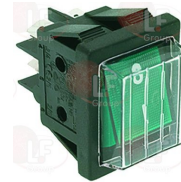
Switches

3319150 BIPOLAR PUSH-BUTTON 16A 250V BLACK
 mounting hole \varnothing 25 mm



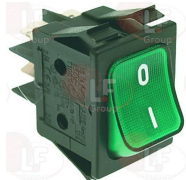
SILKO 0101188

3319012 SWITCH 2-POLE GREEN 16A 250V
 16(4)A 250V - max. temperature 120°C
 with indicator lamp and push-button cap
 mounting hole 22x30 mm - silk screen print 0 - I



SILKO 4640500

3319944 SWITCH 2-POLE GREEN 16A 250V
 16(4)A 250V - max. temperature 120°C
 with indicator lamp - silk screen printing 0 - I
 mounting hole 22x30 mm



SILKO 0109015



Suitable for:

SILKO

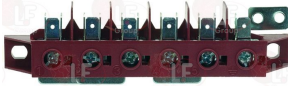


Suitable for:

Terminal blocks

3247009 6-POLE TERMINAL BLOCK FV122/B 40A 600V

for cable max 6 mm²
operating temperature 150°C
nominal voltage 450 V

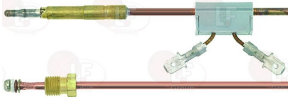


SILKO 0101255

Thermocouples and accessories

3440066 INTERRUPTED THERMOCOUPLE M9x1 60 cm

interrupted contact with fastons



SILKO 0100797

SILKO 0100810

3440015 INTERRUPTION CONNECTOR M9x1



SILKO 0100835

SILKO 1533400

3440064 NUT FOR THERMOCOUPLE M8x1



SILKO 939300

2100820 THERMOCOUPLE SIT QUICK M9x1 40 cm



SILKO 1031504300

3440893 THERMOCOUP.SIT QUICK M9x1 85 cm - 10 PCS



SILKO 1916000

3440056 THERMOCOUPLE SIT M8x1 120 cm THREAD M8x1



SILKO 1665000

3440837 THERMOCOUPLE SIT M9x1 100 cm - 10 PCS



SILKO 0100818



SILKO



Suitable for:

Suitable for:

3440037 THERMOCOUPLE SIT M9x1 100 cm.

3440837 THERMOCOUPLE SIT M9x1 100 cm - 10 PCS



SILKO 0100818

SILKO 0100818

3440038 THERMOCOUPLE SIT M9x1 120 cm

3440838 THERMOCOUPLE SIT M9x1 120 cm - 10 PCS



SILKO 263800

SILKO 263800

3440838 THERMOCOUPLE SIT M9x1 120 cm - 10 PCS



SILKO 263800

3440034 THERMOCOUPLE SIT M9x1 50 cm

3440834 THERMOCOUPLE SIT M9x1 50 cm - 10 PCS



SILKO 0100808

SILKO 0100808

3440834 THERMOCOUPLE SIT M9x1 50 cm - 10 PCS

3440835 THERMOCOUPLE SIT M9x1 60 cm - 10 PCS



SILKO 0100808

SILKO 0100815

**3440859 THERMOCOUPLE SIT M9x1 60 cm - 10 PCS
GIUNTO M8x1**



SILKO 0100812



SILKO



Suitable for:

3440059 THERMOCOUPLE SIT M9x1 60 cm THREAD M8x1



SILKO 0100812

Suitable for:

3440859 THERMOCOUPLE SIT M9x1 60 cm - 10 PCS GIUNTO M8x1



SILKO 0100812

3440035 THERMOCOUPLE SIT M9x1 60 cm.



SILKO 0100815

3440835 THERMOCOUPLE SIT M9x1 60 cm - 10 PCS



SILKO 0100815

3440836 THERMOCOUPLE SIT M9x1 85 cm - 10 PCS



SILKO 0100809

3440036 THERMOCOUPLE SIT M9x1 85 cm.



SILKO CM029100

SILKO MACM029100

SILKO 0100809

3440836 THERMOCOUPLE SIT M9x1 85 cm - 10 PCS



SILKO 0100809

3440081 THERMOCOUPLE SIT QUICK M8x1 45 cm



SILKO 1206400

3440082 THERMOCOUPLE SIT QUICK M8x1 60 cm



SILKO 1033027800

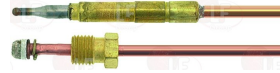
3440083 THERMOCOUPLE SIT QUICK M9x1 32 cm



SILKO 1031500400



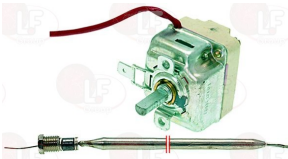
Suitable for: **3440093 THERMOCOUPLE SIT QUICK M9x1 85 cm** Suitable for: **3440893 THERMOCOUP.SIT QUICK M9x1 85 cm - 10 PCS**



SILKO 1916000 SILKO 1916000

Thermostats

3444346 SINGLE-PHASE THERMOSTAT 30-90°C
 D-shaped pin \varnothing 6x4.6 mm
 covered capillary length 900 mm - 16A 250V
 bulb \varnothing 6x130 mm - with stuffing gland fitting M9x1



SILKO MA7800300 SILKO 0101403 SILKO 10140

3444120 SINGLE-PHASE THERMOSTAT 320°C
 with manual reset
 capillary length 900 mm - 16A 250V
 bulb \varnothing 6x80 mm
 for Convection oven (SILKO)



SILKO 0101387

3444312 SINGLE-PHASE THERMOSTAT 360°C
 with manual reset
 capillary length covered 1500 mm - 16A 250V
 bulb \varnothing 4x110 mm



SILKO 0101372 SILKO 0101375

3444043 SINGLE-PHASE THERMOSTAT 50-270°C
 D-shaped pin \varnothing 6x4.6 mm
 covered capillary length 1300 mm - 16A 250V
 bulb \varnothing 3x220 mm



SILKO 101389

3444174 SINGLE-PHASE THERMOSTAT 50-320°C
 D-shaped pin \varnothing 6x4.6 mm
 capillary length 900 mm - 16A 250V
 bulb \varnothing 3x220 mm



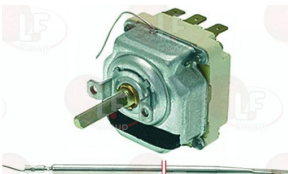
SILKO 0101382

3444770 THREE-PHASE THERMOSTAT 157°C
 with manual reset
 covered capillary length 900 mm - 16A 230V
 bulb \varnothing 6x80 mm



SILKO 0108113

3444052 THREE-PHASE THERMOSTAT 50-320°C
 D-shaped pin \varnothing 6x4.6 mm
 capillary length 900 mm - 10A 400V
 bulb \varnothing 3x230 mm



SILKO MA1309115 SILKO 0101384 SILKO 0105157

The data herewith contained may change without notice and LF SpA cannot be held responsible for possible errors stated or resulting by the use of this document. All rights reserved. No part of this publication may be reproduced without written permission by LF SpA.



Distributing Components, Spare Parts & Accessories in original quality worldwide

-
-  **LF SpA HEADQUARTERS**
via Voltri, 80 - 47522 Cesena (FC) ITALY
Tel. +39 0547 34 11 11 - Fax +39 0547 34 11 10
www.lfrcambi724.it - www.lfrcambi724.mobi
info@lfrcambi.it
Export Dept.: Tel. +39 0547 34 11 50 - Fax: +39 0547 34 11 55
www.lfspareparts724.com - www.lfspareparts724.mobi
export@lfspareparts.com
-  **LF SpA HOUSEHOLD COMPONENTS DIVISION**
Via Padriciano, 34149 Trieste - Italia - AREA Science Park
Tel. +39 0547 34 12 42 - Fax +39 0547 34 12 48
www.lfspareparts724.com - www.lfspareparts724.mobi
info@lfspareparts.com
-  **EPGC Sas FRANCE**
13, Rue des Forts - 59960 Neuville en Ferrain
Tel. +33 (0)3 20 25 06 21
Fax +33 (0)3 20 25 34 12
www.epgc.com
www.epgc724.mobi
epgc@epgc.com
-  **LF GmbH GERMANY**
Junkersstrasse, 3 - D-82178 Puchheim - München
Tel. +49 89 89 45 78 66
Fax +49 89 89 45 78 88
www.lfersatzteile724.de
www.lfersatzteile724.mobi
info@lfersatzteile.de
-  **LF China REPUBLIC OF CHINA**
Room 403, No.2, Huadu Mansion, Lane 422, Huanghua Rd.
Minhang Dist. - 201103 Shanghai
Tel. +86 (0)21 33 53 66 31
Fax +86 (0)21 33 53 66 32
www.lfspareparts724.com
www.lfspareparts724.mobi
china@lfspareparts.com
-  **OOO LF RUSSIAN FEDERATION**
Ul. Anatoliya Zhivova, 8 - office 1 - 123100 Moscow
Tel./Fax +7 495 725 26 53
www.lfspareparts724.ru
www.lfspareparts724.mobi
info@lfspareparts.ru
-  **LF Repuestos Horeca S.L.U. SPAIN**
Poligono Industrial Carpetania - C/Miguel Faraday, 8 - 28906 Getafe
Tel. +34 91 477 91 00
Fax +34 91 477 90 81
www.lfrepuestos-horeca724.es
www.lfrepuestos724.mobi
info@lfrepuestos.es
-  **LF SpA Cesena (IT) Swiss Branch Steinhausen SWITZERLAND**
Sennweidstrasse, 45 - CH-6312 Steinhausen
Tel. +41 (0)41 760 15 80-1
Fax +41 (0)41 760 15 85
www.lfersatzteile724.ch
www.lfersatzteile724.mobi
info@lfersatzteile.ch
-  **LF Spare Parts Ltd. UNITED KINGDOM**
A10a Lakeside Business Park, Broadway Lane
South Cerney, Gloucestershire GL7 5XL
Tel. +44 (0)1285 86 16 25
Fax +44 (0)1285 86 39 49
www.lfspareparts724.co.uk
www.lfspareparts724.mobi
info@lfspareparts.co.uk
-
-  **AUSTRALIA AND NEW ZEALAND**
www.lfspareparts724.com
andrea.calvio@lfspareparts.com
-  **AUSTRIA**
www.lfersatzteile724.at
info@lfersatzteile.at
-  **BALKAN COUNTRIES**
www.lfspareparts724.com
matija.ramov@lfspareparts.com
-  **BALTIC COUNTRIES**
www.lfspareparts724.com
inara.silina@lfspareparts.com
-  **CENTRAL AND EASTERN EUROPE**
www.lfspareparts724.cz
jiri.kremla@lfspareparts.cz
-  **DENMARK**
www.lfspareparts724.dk
michael.leth@lfspareparts.com
-  **JAPAN**
www.lfspareparts724.jp
hiroshi.ukai@lfspareparts.jp
-  **SOUTH KOREA**
www.lfspareparts724.com
fabio.doni@lfspareparts.com
-  **TURKEY**
www.lfyedekparca724.com
basar.ergun@lfyedekparca.com
-  **USA AND CANADA**
www.lfspareparts724.us
sauro.dallaglio@lfspareparts.us
howard.truitt@lfspareparts.us