



Spare parts for:

Ovens



Suitable for:

SIT



This catalogue is automatically generated.
Therefore, the sequence of the items might
not be always shown at best.

Updates will be issued in case of additions
and/or amendments.

*Suitable **universal spare parts** may not be included*

Rel. 2015-10230847





Suitable for:

SIT

Suitable for:



Cables for piezo igniters

3001002 IGNITION LEAD 1000 mm
with faston 6.35x0.8 mm for ignition
with faston \varnothing 4 mm for ignition plug



SIT 0.028.398

3001016 IGNITION LEAD 1000 mm
with faston \varnothing 2.4 mm for ignition
with faston \varnothing 4 mm for electrode



SIT 0.028.513

3001019 IGNITION LEAD 1000 mm
with faston \varnothing 2.4 mm for ignition
with faston \varnothing 2.4 mm for electrode



SIT 0.028.512

3001028 IGNITION LEAD 500 mm
with faston \varnothing 2.4 mm for ignition
with faston \varnothing 4 mm for sparking plug



SIT 0.028.510

3001017 IGNITION LEAD 600 mm
with faston 6.35x0.8 mm for ignition
with faston \varnothing 4 mm for electrode



SIT 0.028.399

3001018 IGNITION LEAD 600 mm
with faston \varnothing 2.4 mm for ignition
with faston \varnothing 4 mm for electrode

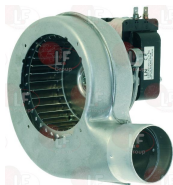


SIT 0.028.509

SIT 0.028.521

Centrifugal fans

3240716 MOTOR FAN EV200/120/E30CA 80W 230V
50Hz



SIT

7111267 VENTILATEUR CENTRIFUGE LN2
230V 50Hz type NG40050



SIT W940111050



Electrical gas valves and accessories

3526089 ELETTROSIT VALVE \varnothing 1/2"FF
 inlet \varnothing 1/2" F - outlet \varnothing 1/2" F
 thermocouple connection M9x1
 maximum gas inlet pressure 50 mbar
 pressure adjustment range
 3 ÷ 18 mbar
 ambient temperature 0 ÷ 60°C
 power supply 230V 50Hz
 long buttons
 pilot connection and LOWER thermocouple



SIT 0.810.136

3526108 ELBOW FLANGE \varnothing 1/2" F
 with screws and "O" ring
 for ELETTROSIT VALVE



SIT

3526106 STRAIGHT FLANGE \varnothing 1/2"
 with screws and "O" ring
 for ELETTROSIT VALVE



SIT

3526096 VALVE MICROSWITCH
 maximum load 0.2 A
 for VALVE ELETTROSIT-820 NOVA-824 NOVASIT



SIT 0.927.012

3526100 COIL 220V
 for VALVE ELETTROSIT



SIT 0.967.041

3001008 PIEZO IGNITER
 a \varnothing 14 mm hole is required for the assembly
 faston M \varnothing 2.4 mm



SIT 0.073.953

3526107 STRAIGHT FLANGE \varnothing 3/4" F
 with screws and "O" ring
 for ELETTROSIT VALVE



SIT



Suitable for:

SIT



3526092 ELETTROSIT VALVE \varnothing 1/2"FF
 inlet \varnothing 1/2" F - outlet \varnothing 1/2" F
 thermocouple connection M9x1
 maximum gas inlet pressure 50 mbar
 pressure adjustment range
 3÷18 mbar
 ambient temperature 0÷60°C
 power supply 220/240V 50Hz
 long buttons
 pilot connection and LATERAL thermocouple



SIT 0.810.126

3526108 ELBOW FLANGE \varnothing 1/2" F
 with screws and "O" ring
 for ELETTROSIT VALVE



SIT

3526106 STRAIGHT FLANGE \varnothing 1/2"
 with screws and "O" ring
 for ELETTROSIT VALVE



SIT

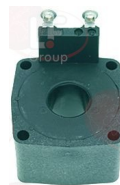
3526096 VALVE MICROSWITCH
 maximum load 0.2 A
 for VALVE ELETTROSIT-820 NOVA-824 NOVASIT



SIT 0.927.012

Suitable for:

3526100 COIL 220V
 for VALVE ELETTROSIT



SIT 0.967.041

3001008 PIEZO IGNITER
 a \varnothing 14 mm hole is required for the assembly
 faston M \varnothing 2.4 mm



SIT 0.073.953

3526107 STRAIGHT FLANGE \varnothing 3/4" F
 with screws and "O" ring
 for ELETTROSIT VALVE



SIT

3526138 VALVE PROTECTION 72x44 mm



SIT

3526087 ELETROSIT VALVE \varnothing 3/4"FF
 inlet \varnothing 3/4" F - outlet \varnothing 3/4" F
 thermocouple connection M9x1
 maximum gas inlet pressure 50 mbar
 pressure adjustment range
 3÷18 mbar
 ambient temperature 0÷60°C
 power supply 24V 50Hz
 pilot connection and LOWER thermocouple



SIT 0.810.171

3526093 EXTENSION FOR ELETROSIT BUTTON 34 mm
 for switching on/off buttons



SIT

3526106 STRAIGHT FLANGE \varnothing 1/2"
 with screws and "O" ring
 for ELETROSIT VALVE



SIT

3526096 VALVE MICROSWITCH
 maximum load 0.2 A
 for VALVE ELETROSIT-820 NOVA-824 NOVASIT



SIT 0.927.012

Suitable for:

3526108 ELBOW FLANGE \varnothing 1/2" F
 with screws and "O" ring
 for ELETROSIT VALVE



SIT

3001008 PIEZO IGNITER
 a \varnothing 14 mm hole is required for the assembly
 faston M \varnothing 2.4 mm



SIT 0.073.953

3526107 STRAIGHT FLANGE \varnothing 3/4" F
 with screws and "O" ring
 for ELETROSIT VALVE



SIT



Suitable for:

SIT



3526090 Elettrosit Valve \varnothing 3/4" FF
 inlet \varnothing 3/4" F - outlet \varnothing 3/4" F
 thermocouple connection M9x1
 maximum gas inlet pressure 50 mbar
 pressure adjustment range
 3 ÷ 18 mbar
 ambient temperature 0 ÷ 60°C
 power supply 230V 50Hz
 long buttons
 pilot connection and LATERAL thermocouple



SIT 0.810.175

3526100 COIL 220V
 for VALVE Elettrosit



SIT 0.967.041

3526093 EXTENSION FOR Elettrosit Button 34 mm
 for switching on/off buttons



SIT

3001008 Piezo Igniter
 a \varnothing 14 mm hole is required for the assembly
 faston M \varnothing 2.4 mm



SIT 0.073.953

3526106 STRAIGHT FLANGE \varnothing 1/2"
 with screws and "O" ring
 for Elettrosit Valve



SIT

Suitable for:

3526137 BUTTON FOR Elettrosit Valve 46 mm



SIT

3526108 ELBOW FLANGE \varnothing 1/2"
 with screws and "O" ring
 for Elettrosit Valve



SIT

4057862 FITTING \varnothing 3/4" M-3/4" M BRASS



3526136 SPRING FOR PUSH-BUTTON



SIT

3526107 STRAIGHT FLANGE \varnothing 3/4"
 with screws and "O" ring
 for Elettrosit Valve



SIT



Suitable for:

3526096 VALVE MICROSWITCH
maximum load 0.2 A
for VALVE ELETTROSIT-820 NOVA-824 NOVASIT



SIT 0.927.012

3526290 VALVE ELETTROSIT \varnothing 3/4"FF
inlet \varnothing 3/4" F - outlet \varnothing 3/4" F
thermocouple connection 11/32"
maximum gas inlet pressure 50 mbar
setting range of the pressure
adjuster 3÷18 mbar
room temperature 0÷60°C
power supply 230V 50Hz
pilot connection and BOTTOM thermocouple



SIT 0.810.200

3020083 NUT & OLIVE \varnothing 4 mm



SIT 0.958.030

1186759 O-RING 03106 EPDM



SIT 0.925.026

3526106 STRAIGHT FLANGE \varnothing 1/2"
with screws and "O" ring
for ELETTROSIT VALVE



SIT

SIT

Suitable for:



3526108 ELBOW FLANGE \varnothing 1/2" F
with screws and "O" ring
for ELETTROSIT VALVE



SIT

3020084 NUT & OLIVE \varnothing 6 mm



SIT 0.958.031

3001008 PIEZO IGNITER
a \varnothing 14 mm hole is required for the assembly
faston M \varnothing 2.4 mm



SIT 0.073.953

3526107 STRAIGHT FLANGE \varnothing 3/4" F
with screws and "O" ring
for ELETTROSIT VALVE



SIT



Suitable for:

3526096 VALVE MICROSWITCH
maximum load 0.2 A
for VALVE ELETTROSIT-820 NOVA-824 NOVASIT



SIT 0.927.012

SIT

Suitable for:



3526079 VALVE 820 NOVA \varnothing 1/2"FF
inlet \varnothing 1/2" F - outlet \varnothing 1/2" F
thermocouple fitting M9x1
maximum gas inlet pressure 60 mbar
outlet pressure setting range
3÷30 mbar
room temperature 0÷70°C
power supply 230V 50Hz



SIT 0.820.010

SIT 0.820.012

3526098 COIL 220V
for VALVE 820 NOVA-824 NOVASIT-822 NOVA-826 NOVA



SIT 0.967.064

3526077 ELBOW FLANGE \varnothing 1/2" F
complete with screws and O-Ring
for valves SIT 820-Honeywell V4400-V4600-VR4605P



SIT 0.906.260

3526102 ELECTRIC COUPLING WITH CABLE
for VALVE 820 NOVA-824 NOVASIT-822 NOVA-826 NOVA



SIT 0.960.015

SIT 0.960.103

SIT 0.960.104

3526270 VALVE 820 NOVA EXTENSION
D shaft \varnothing 10x8 mm



SIT

3526099 COIL 24V
for VALVE 820 NOVA-824 NOVASIT-822 NOVA-826 NOVA



SIT 0.967.065

3526078 ELBOW FLANGE \varnothing 3/4" F
complete with screws and O-Ring
for valves SIT 820-Honeywell V4400-V4600-VR4605P



SIT 0.906.258

5047586 EXTENSION FOR VALVE 820 NOVA
D-shaped pin \varnothing 10x8 mm





Suitable for:

3241141 EXTENSION FOR 820 NOVA VALVE
D-shaped pin 10x8 mm
for OVEN- FRYER



SIT

3526124 KNOB EXTENSION LENGTH 77 mm
for VALVE 820 NOVA-824 NOVASIT



SIT 0.999.957

3182008 MAGNETIC UNIT SIT
ø head 35 mm - ø end 20 mm - length 47 mm
for valve SIT NOVASIT 820



SIT 0.006.245

3020084 NUT & OLIVE ø 6 mm



SIT 0.958.031

3526103 PROTECTING COVER
for VALVE 820 NOVA-824 NOVASIT-822 NOVA-826 NOVA



SIT 0.903.094

SIT

Suitable for:

4057862 FITTING ø 3/4" M-3/4" M BRASS



3241142 KNOB GASKET ø 44 mm



SIT

3020083 NUT & OLIVE ø 4 mm



SIT 0.958.030

3001008 PIEZO IGNITER
a ø 14 mm hole is required for the assembly
faston M ø 2.4 mm



SIT 0.073.953

3526075 STRAIGHT FLANGE ø 1/2"
complete with screws and O-Ring
for valves SIT 820-Honeywell V4400-V4600-VR4605P



SIT 0.906.261





Suitable for:

3526076 STRAIGHT FLANGE \varnothing 3/4"
complete with screws and O-Ring
for valves SIT 820-Honeywell V4400-V4600-VR4605P



SIT 0.906.259

3526096 VALVE MICROSWITCH
maximum load 0.2 A
for VALVE ELETTROSIT-820 NOVA-824 NOVASIT



SIT 0.927.012

3526183 VALVE 820 NOVA \varnothing 1/2" FF
inlet \varnothing 1/2" F - outlet \varnothing 1/2" F
thermocouple fitting M9x1
maximum gas inlet pressure 60 mbar
outlet pressure setting range
3÷30 mbar
room temperature 0÷70°C
power supply 230V 60Hz



SIT 0.820.060

3526099 COIL 24V
for VALVE 820 NOVA-824 NOVASIT-822 NOVA-826 NOVA



SIT 0.967.065

3526078 ELBOW FLANGE \varnothing 3/4" F
complete with screws and O-Ring
for valves SIT 820-Honeywell V4400-V4600-VR4605P



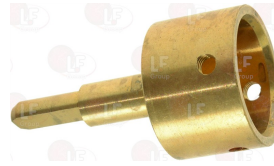
SIT 0.906.258

SIT



Suitable for:

5012595 VALVE EXTENSION 820 NOVA
D-shaped pin \varnothing 6x4.6 mm



3526269 VALVE 820 NOVA EXTENSION
D shaft \varnothing 10x8 mm



3526098 COIL 220V
for VALVE 820 NOVA-824 NOVASIT-822 NOVA-826 NOVA



SIT 0.967.064

3526077 ELBOW FLANGE \varnothing 1/2" F
complete with screws and O-Ring
for valves SIT 820-Honeywell V4400-V4600-VR4605P



SIT 0.906.260

3526102 ELECTRIC COUPLING WITH CABLE
for VALVE 820 NOVA-824 NOVASIT-822 NOVA-826 NOVA



SIT 0.960.015

SIT 0.960.103

SIT 0.960.104



Suitable for:

3526124 **KNOB EXTENSION LENGTH 77 mm**
for VALVE 820 NOVA-824 NOVASIT



SIT 0.999.957

3020083 **NUT & OLIVE \varnothing 4 mm**



SIT 0.958.030

3001008 **PIEZO IGNITER**
a \varnothing 14 mm hole is required for the assembly
faston M \varnothing 2.4 mm



SIT 0.073.953

3526075 **STRAIGHT FLANGE \varnothing 1/2"**
complete with screws and O-Ring
for valves SIT 820-Honeywell V4400-V4600-VR4605P



SIT 0.906.261

3526096 **VALVE MICROSWITCH**
maximum load 0.2 A
for VALVE ELETTROSIT-820 NOVA-824 NOVASIT

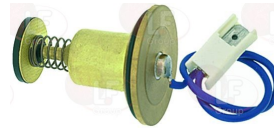


SIT 0.927.012

SIT

Suitable for:

3182008 **MAGNETIC UNIT SIT**
 \varnothing head 35 mm - \varnothing end 20 mm - length 47 mm
for valve SIT NOVASIT 820



SIT 0.006.245

3020084 **NUT & OLIVE \varnothing 6 mm**



SIT 0.958.031

3526103 **PROTECTING COVER**
for VALVE 820 NOVA-824 NOVASIT-822 NOVA-826 NOVA



SIT 0.903.094

3526076 **STRAIGHT FLANGE \varnothing 3/4"**
complete with screws and O-Ring
for valves SIT 820-Honeywell V4400-V4600-VR4605P



SIT 0.906.259





Suitable for:

3526361 VALVE 822 NOVA \varnothing 1/2"FF
 inlet \varnothing 1/2" F - outlet \varnothing 1/2" F
 thermocouple fitting M10x1
 maximum gas inlet pressure 60 mbar
 outlet pressure setting range
 3÷30 mbar
 ambient temperature 0÷60°C
 power supply 230V 50Hz



SIT 0.822.110

3526099 COIL 24V
 for VALVE 820 NOVA-824 NOVASIT-822 NOVA-826 NOVA



SIT 0.967.065

3526078 ELBOW FLANGE \varnothing 3/4" F
 complete with screws and O-Ring
 for valves SIT 820-Honeywell V4400-V4600-VR4605P



SIT 0.906.258

3020083 NUT & OLIVE \varnothing 4 mm



SIT 0.958.030

3526103 PROTECTING COVER
 for VALVE 820 NOVA-824 NOVASIT-822 NOVA-826 NOVA



SIT 0.903.094

SIT



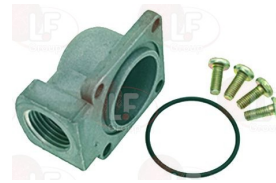
Suitable for:

3526098 COIL 220V
 for VALVE 820 NOVA-824 NOVASIT-822 NOVA-826 NOVA



SIT 0.967.064

3526077 ELBOW FLANGE \varnothing 1/2" F
 complete with screws and O-Ring
 for valves SIT 820-Honeywell V4400-V4600-VR4605P



SIT 0.906.260

3526102 ELECTRIC COUPLING WITH CABLE
 for VALVE 820 NOVA-824 NOVASIT-822 NOVA-826 NOVA



SIT 0.960.015

SIT 0.960.103

SIT 0.960.104

3020084 NUT & OLIVE \varnothing 6 mm



SIT 0.958.031

3526075 STRAIGHT FLANGE \varnothing 1/2"
 complete with screws and O-Ring
 for valves SIT 820-Honeywell V4400-V4600-VR4605P



SIT 0.906.261

3526076 STRAIGHT FLANGE \varnothing 3/4"
complete with screws and O-Ring
for valves SIT 820-Honeywell V4400-V4600-VR4605P



SIT 0.906.259

3526175 VALVE 822 NOVA 230V 50Hz
inlet \varnothing 1/2" F - outlet \varnothing 1/2" F
gas inlet max.pressure 60 mbar
outlet pressure range
3÷30 mbar
room temperature 0÷60°C
power supply 230V 50Hz



SIT 0.822.114

SIT 0.822.144

3526099 COIL 24V
for VALVE 820 NOVA-824 NOVASIT-822 NOVA-826 NOVA



SIT 0.967.065

3526078 ELBOW FLANGE \varnothing 3/4" F
complete with screws and O-Ring
for valves SIT 820-Honeywell V4400-V4600-VR4605P



SIT 0.906.258

3020083 NUT & OLIVE \varnothing 4 mm



SIT 0.958.030



3526098 COIL 220V
for VALVE 820 NOVA-824 NOVASIT-822 NOVA-826 NOVA



SIT 0.967.064

3526077 ELBOW FLANGE \varnothing 1/2" F
complete with screws and O-Ring
for valves SIT 820-Honeywell V4400-V4600-VR4605P



SIT 0.906.260

3526102 ELECTRIC COUPLING WITH CABLE
for VALVE 820 NOVA-824 NOVASIT-822 NOVA-826 NOVA



SIT 0.960.015

SIT 0.960.103

SIT 0.960.104

3020084 NUT & OLIVE \varnothing 6 mm



SIT 0.958.031



Suitable for:

3526103 PROTECTING COVER
for VALVE 820 NOVA-824 NOVASIT-822 NOVA-826 NOVA



SIT 0.903.094

3526076 STRAIGHT FLANGE \varnothing 3/4"
complete with screws and O-Ring
for valves SIT 820-Honeywell V4400-V4600-VR4605P



SIT 0.906.259

3523084 VALVE 826 NOVA \varnothing 1/2" FF
inlet \varnothing 1/2" F - outlet \varnothing 1/2" F
maximum gas inlet pressure 60 mbar
outlet pressure range setting
2÷50 mbar
room temperature 0÷60°C
power supply 230V 50Hz



SIT 0.826.011

3526099 COIL 24V
for VALVE 820 NOVA-824 NOVASIT-822 NOVA-826 NOVA



SIT 0.967.065

3526077 ELBOW FLANGE \varnothing 1/2" F
complete with screws and O-Ring
for valves SIT 820-Honeywell V4400-V4600-VR4605P



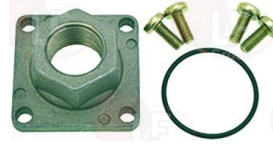
SIT 0.906.260

SIT



Suitable for:

3526075 STRAIGHT FLANGE \varnothing 1/2"
complete with screws and O-Ring
for valves SIT 820-Honeywell V4400-V4600-VR4605P



SIT 0.906.261

3526098 COIL 220V
for VALVE 820 NOVA-824 NOVASIT-822 NOVA-826 NOVA



SIT 0.967.064

3030001 COUPLING ELECTRIC WITH CABLE
for valve sit 824 NOVA-826 NOVA-836 TANDEM



SIT 0.960.018

SIT 0.960.118

3526078 ELBOW FLANGE \varnothing 3/4" F
complete with screws and O-Ring
for valves SIT 820-Honeywell V4400-V4600-VR4605P



SIT 0.906.258



Suitable for:

3526102 ELECTRIC COUPLING WITH CABLE
for VALVE 820 NOVA-824 NOVASIT-822 NOVA-826 NOVA



SIT 0.960.015

SIT 0.960.103

SIT 0.960.104

3020083 NUT & OLIVE \varnothing 4 mm



SIT 0.958.030

3526103 PROTECTING COVER
for VALVE 820 NOVA-824 NOVASIT-822 NOVA-826 NOVA



SIT 0.903.094

3526076 STRAIGHT FLANGE \varnothing 3/4"
complete with screws and O-Ring
for valves SIT 820-Honeywell V4400-V4600-VR4605P



SIT 0.906.259

2110027 VALVE 827 NOVA \varnothing 1/2"FF
inlet \varnothing 1/2"F - outlet \varnothing 1/2"F
maximum gas inlet pressure 60 mbar
outlet pressure calibration field
2÷20 mbar
ambient temperature 0÷60°C
power supply 220/240V 50Hz



SIT 0.827.110

SIT

Suitable for:

3526143 MODULATOR COIL
220V rectified
for VALVE 836 TANDEM



SIT 0.967.135

3020084 NUT & OLIVE \varnothing 6 mm



SIT 0.958.031

3526075 STRAIGHT FLANGE \varnothing 1/2"
complete with screws and O-Ring
for valves SIT 820-Honeywell V4400-V4600-VR4605P



SIT 0.906.261

3526098 COIL 220V
for VALVE 820 NOVA-824 NOVASIT-822 NOVA-826 NOVA



SIT 0.967.064





Suitable for:

3030001 COUPLING ELECTRIC WITH CABLE
for valve sit 824 NOVA-826 NOVA-836 TANDEM



SIT 0.960.018

SIT 0.960.118

3526078 ELBOW FLANGE \varnothing 3/4" F
complete with screws and O-Ring
for valves SIT 820-Honeywell V4400-V4600-VR4605P



SIT 0.906.258

3020083 NUT & OLIVE \varnothing 4 mm



SIT 0.958.030

3526103 PROTECTING COVER
for VALVE 820 NOVA-824 NOVASIT-822 NOVA-826 NOVA



SIT 0.903.094

3526076 STRAIGHT FLANGE \varnothing 3/4"
complete with screws and O-Ring
for valves SIT 820-Honeywell V4400-V4600-VR4605P



SIT 0.906.259

SIT



Suitable for:

3526077 ELBOW FLANGE \varnothing 1/2" F
complete with screws and O-Ring
for valves SIT 820-Honeywell V4400-V4600-VR4605P



SIT 0.906.260

3526102 ELECTRIC COUPLING WITH CABLE
for VALVE 820 NOVA-824 NOVASIT-822 NOVA-826 NOVA



SIT 0.960.015

SIT 0.960.103

SIT 0.960.104

3020084 NUT & OLIVE \varnothing 6 mm



SIT 0.958.031

3526075 STRAIGHT FLANGE \varnothing 1/2"
complete with screws and O-Ring
for valves SIT 820-Honeywell V4400-V4600-VR4605P



SIT 0.906.261



3526104 VALVE 830 TANDEM \varnothing 1/2"FF
 inlet \varnothing 1/2" F - outlet \varnothing 1/2" F
 maximum gas inlet pressure 60 mbar
 outlet pressure adjustment range
 3÷50 mbar
 with slow start
 room temperature 0÷60°C
 power supply 230V 50Hz



SIT 0.830.034

3526292 COUPLING ELECTRIC WITH CABLE
 for valve sit 836 TANDEM



SIT 0.960.016

SIT 0.960.107

3020083 NUT & OLIVE \varnothing 4 mm



SIT 0.958.030

3348041 PIPE OLIVE \varnothing 16 mm
 for model PEL 23



SIT 0.957.008

3526141 VALVE 830 TANDEM \varnothing 1/2"FF
 inlet \varnothing 1/2" F - outlet \varnothing 1/2" F
 thermocouple fitting M10x1
 maximum gas inlet pressure 60 mbar
 outlet gas pressure setting range 3÷50 mbar
 room temperature 0÷60°C
 power supply 230V 50Hz



SIT 0.830.040

Suitable for:

2100724 COIL 24V
 for valve 830 TANDEM-836 TANDEM



SIT 0.967.091

3526142 DOUBLE COIL FOR VALVE
 220V 50Hz
 for VALVE 830 TANDEM-836 TANDEM



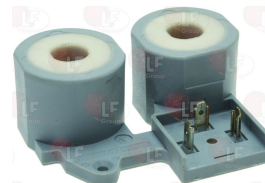
SIT 0.967.090

3020084 NUT & OLIVE \varnothing 6 mm



SIT 0.958.031

2100724 COIL 24V
 for valve 830 TANDEM-836 TANDEM



SIT 0.967.091



Suitable for:

3526292 COUPLING ELECTRIC WITH CABLE
for valve sit 836 TANDEM



SIT 0.960.016

SIT 0.960.107

3020083 NUT & OLIVE ø 4 mm



SIT 0.958.030

3348041 PIPE OLIVE ø 16 mm
for model PEL 23



SIT 0.957.008

3526212 VALVE 830 TANDEM ø 1/2"FF
inlet ø 1/2"FF - outlet ø 1/2"FF
maximum gas inlet pressure 60 mbar
outlet pressure range setting
3÷50 mbar
room temperature 0÷60°C
power supply 220/240V 50Hz



SIT 0.830.041

3526292 COUPLING ELECTRIC WITH CABLE
for valve sit 836 TANDEM



SIT 0.960.016

SIT 0.960.107

SIT

Suitable for:

3526142 DOUBLE COIL FOR VALVE
220V 50Hz
for VALVE 830 TANDEM-836 TANDEM



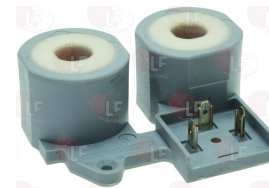
SIT 0.967.090

3020084 NUT & OLIVE ø 6 mm



SIT 0.958.031

2100724 COIL 24V
for valve 830 TANDEM-836 TANDEM



SIT 0.967.091

3526142 DOUBLE COIL FOR VALVE
220V 50Hz
for VALVE 830 TANDEM-836 TANDEM



SIT 0.967.090





Suitable for:

3020083 NUT & OLIVE \varnothing 4 mm



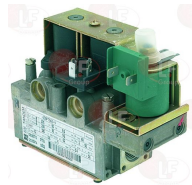
SIT 0.958.030

3348041 PIPE OLIVE \varnothing 16 mm
for model PEL 23



SIT 0.957.008

3526140 VALVE 836 TANDEM \varnothing 1/2"FF
inlet \varnothing 1/2"FF - outlet \varnothing 1/2"FF
maximum gas inlet pressure 60 mbar
max.gas outlet pressure adjustment range 7÷50 mbar
outlet gas pressure setting range min.2÷45 mbar
room temperature 0÷60°C
power supply 230V 30A rectified



SIT 0.836.010

3030001 COUPLING ELECTRIC WITH CABLE
for valve sit 824 NOVA-826 NOVA-836 TANDEM



SIT 0.960.018

SIT 0.960.118

3526142 DOUBLE COIL FOR VALVE
220V 50Hz
for VALVE 830 TANDEM-836 TANDEM



SIT 0.967.090

SIT

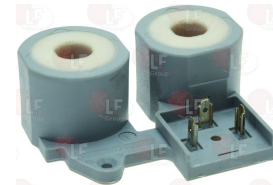
Suitable for:

3020084 NUT & OLIVE \varnothing 6 mm



SIT 0.958.031

2100724 COIL 24V
for valve 830 TANDEM-836 TANDEM



SIT 0.967.091

3526292 COUPLING ELECTRIC WITH CABLE
for valve sit 836 TANDEM



SIT 0.960.016

SIT 0.960.107

3526143 MODULATOR COIL
220V rectified
for VALVE 836 TANDEM



SIT 0.967.135





Suitable for:

3020083 NUT & OLIVE \varnothing 4 mm



SIT 0.958.030

3348041 PIPE OLIVE \varnothing 16 mm
for model PEL 23



SIT 0.957.008

2101992 VALVE 840 SIGMA \varnothing 3/4"MM
inlet \varnothing 3/4" M - outlet \varnothing 3/4" M
max. pressure of inlet gas 60 mbar
calibration field of outlet pressure
2÷50 mbar
room temperature 0÷60°C
power supply 220V 60Hz



SIT 0.840.028

3526210 VALVE 840 SIGMA \varnothing 3/4"MM
inlet \varnothing 3/4" M - outlet \varnothing 3/4" M
maximum gas inlet pressure 60 mbar
outlet pressure range setting
2÷50 mbar
room temperature 0÷60°C
power supply 230V 50Hz 9.2VA



SIT 0.840.020

SIT

Suitable for:

3020084 NUT & OLIVE \varnothing 6 mm



SIT 0.958.031

2110618 DOUBLE COIL FOR VALVE
230V 50Hz
for VALVE 840 SIGMA-848 SIGMA



SIT 0.967.003

SIT 0.967.158





3526012 VALVE 848 SIGMA \varnothing 3/4"MM
 inlet \varnothing 3/4" M - outlet \varnothing 3/4" M
 maximum gas inlet pressure 60 mbar
 outlet pressure range setting
 0.5 ÷ 12 mbar
 room temperature 0 ÷ 60°C
 power supply 230V 50Hz 2.8VA



SIT 0.848.037

Suitable for:

2110618 DOUBLE COIL FOR VALVE
 230V 50Hz
 for VALVE 840 SIGMA-848 SIGMA



SIT 0.967.003

SIT 0.967.158

5063653 VALVE 848 SIGMA \varnothing 3/4"MM
 inlet \varnothing 3/4" M - outlet \varnothing 3/4" M
 maximum gas inlet pressure 60 mbar
 outlet pressure setting 0.5 ÷ 12 mbar
 ambient temperature 0 ÷ 60°C
 power supply 230V 50Hz 2.8/9.2VA



SIT 0.848.083

2110618 DOUBLE COIL FOR VALVE
 230V 50Hz
 for VALVE 840 SIGMA-848 SIGMA



SIT 0.967.003

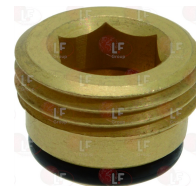
SIT 0.967.158

3526009 VALVE 820 NOVA \varnothing 1/2"FF
 inlet \varnothing 1/2" F - outlet \varnothing 1/2" F
 thermocouple fitting M9x1
 gas max inlet pressure 60 mbar
 outlet pressure setting range
 3 ÷ 30 mbar
 room temperature 0 ÷ 70°C
 power supply 230V 50Hz
 slow ignition



SIT 0.820.034

4056009 CAP FOR VALVE EUROSIT



SIT 0.972.035

SIT 0.972.058

3526098 COIL 220V
 for VALVE 820 NOVA-824 NOVASIT-822 NOVA-826 NOVA



SIT 0.967.064

3526099 COIL 24V
 for VALVE 820 NOVA-824 NOVASIT-822 NOVA-826 NOVA



SIT 0.967.065



Suitable for:

3526077 ELBOW FLANGE \varnothing 1/2" F
complete with screws and O-Ring
for valves SIT 820-Honeywell V4400-V4600-VR4605P



SIT 0.906.260

3526102 ELECTRIC COUPLING WITH CABLE
for VALVE 820 NOVA-824 NOVASIT-822 NOVA-826 NOVA



SIT 0.960.015

SIT 0.960.103

SIT 0.960.104

3182008 MAGNETIC UNIT SIT
 \varnothing head 35 mm - \varnothing end 20 mm - length 47 mm
for valve SIT NOVASIT 820



SIT 0.006.245

3020084 NUT & OLIVE \varnothing 6 mm



SIT 0.958.031

3526103 PROTECTING COVER
for VALVE 820 NOVA-824 NOVASIT-822 NOVA-826 NOVA



SIT 0.903.094

SIT

Suitable for:

3526078 ELBOW FLANGE \varnothing 3/4" F
complete with screws and O-Ring
for valves SIT 820-Honeywell V4400-V4600-VR4605P



SIT 0.906.258

3526124 KNOB EXTENSION LENGTH 77 mm
for VALVE 820 NOVA-824 NOVASIT



SIT 0.999.957

3020083 NUT & OLIVE \varnothing 4 mm



SIT 0.958.030

3001008 PIEZO IGNITER
a \varnothing 14 mm hole is required for the assembly
faston M \varnothing 2.4 mm



SIT 0.073.953

3526075 STRAIGHT FLANGE \varnothing 1/2"
complete with screws and O-Ring
for valves SIT 820-Honeywell V4400-V4600-VR4605P



SIT 0.906.261





Suitable for:

3526076 STRAIGHT FLANGE \varnothing 3/4"
complete with screws and O-Ring
for valves SIT 820-Honeywell V4400-V4600-VR4605P



SIT 0.906.259

SIT

Suitable for:

3526096 VALVE MICROSWITCH
maximum load 0.2 A
for VALVE ELETROSIT-820 NOVA-824 NOVASIT



SIT 0.927.012



Electronic boxes

3091031 CONTROL BOX 501 EFD
model SIT - 230V 50/60Hz 10A



SIT 0.501.001

SIT 0.501.201

3091012 CONTROL BOX 503 EDF FOR TANDEM
model SIT - 220/240V 50/60Hz 7VA



SIT 0.503.003

3091025 CONTROL BOX 503 EFD FOR TANDEM
model SIT - 230V 50/60Hz 10VA



SIT 0.503.004

3091024 CONTROL BOX 537 ABC
model SIT - 230V 50/60Hz 10VA



SIT 0.537.001

3091029 CONTROL BOX 537 ABC
SIT model - 220/240V 50/60Hz 12VA
for 6 SHELVES



SIT 0.537.307

3091015 CONTROL BOX 577 DBC
model SIT - 220/240V 50/60Hz 20VA



SIT 0.577.307

2101338 CONTROL BOX 579 DBC
SIT model - 220/240V 50/60Hz 12VA



SIT 0.579.414

7105289 CONTROL BOX 579 DBC
model SIT - 220/240V 50/60Hz 12VA



SIT 0.577.409

SIT 0.579.409



Suitable for:

40C4260 CONTROL UNIT 579 DBC
SIT model - 220/240V 50/60Hz 12VA



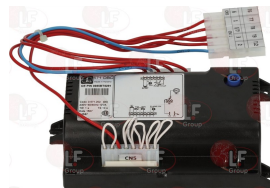
SIT 0.579.411

SIT



Suitable for:

3091005 KIT CONTROL BOX 571 DBC
complete with cable
model SIT - 230V 50/60Hz



SIT 0.501.213

SIT 0.571.202

Gas valves and accessories

2110818 VALVE MINISIT OVEN 100÷340°C
inlet \varnothing 1/2" F - outlet \varnothing 3/8" F
thermocouple connection M9x1
maximum pressure of inlet gas 50 mbar
ambient temperature 0÷80°C
with outlet pressure adjustment screw
capillary length 1050 mm
bulb \varnothing 4x72 mm
provided without lid, knob and flange



SIT 0.710.655

3523035 KNOB MINISIT BLACK \varnothing 37 mm



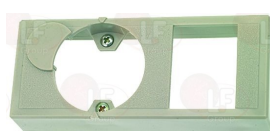
SIT 0.916.124

3182003 MAGNETIC UNIT SIT
 \varnothing head 25 mm - \varnothing end 17 mm - length 56 mm
for valve SIT AC2 - VR8-MINISIT



SIT 0.006.443

3523047 MINISIT COVER



SIT 0.903.052

3523038 MINISIT ELBOW FLANGE \varnothing 1/2" F
with screws and "O" ring



SIT

3523037 MINISIT ELBOW FLANGE \varnothing 3/8"
with screws and "O" ring



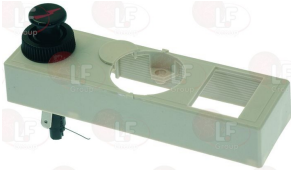
SIT

SIT 0.906.270



Suitable for:

3001071 MINISIT PIEZO IGNITER WITH COVER
male faston 2.4 mm



SIT 0.073.005
SIT 0.073.203

SIT 0.073.006

SIT 0.073.015

3523061 NUT ϕ 1/4"x6 mm



SIT 0.992.032

3020082 OLIVE FOR 12 mm ϕ PIPE



SIT 0.957.007

3348044 PIPE OLIVE ϕ 10 mm
for model PEL 20 - 21



SIT 0.957.004

3523036 REDUCTION STRAIGHT ϕ 3/8"F - ϕ 1/2"F
in brass with internal and external thread
 ϕ internal thread 3/8"F - ϕ external thread 1/2"F
for MINISIT flange



SIT 0.974.074

SIT

Suitable for:

3523048 MINISIT SENSING ELEMENT 100÷340°C
stainless steel capillary length 1050 mm
bulb ϕ 4x72 mm



SIT 0.928.582

3523060 OIL SEAL FITTING ϕ 6.5 mm
internal thread M10x0.75 - external thread M14x1.5



SIT 0.974.502

3020079 PIPE FITTING ϕ 12 mm
thread ϕ 3/8"F



SIT 0.958.025

3348041 PIPE OLIVE ϕ 16 mm
for model PEL 23



SIT 0.957.008



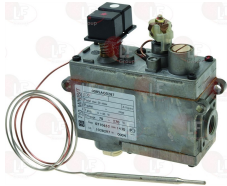


Suitable for:

SIT



2111717 VALVE MINISIT OVEN 70÷270°C
 inlet \varnothing 1/2"F - outlet \varnothing 3/8"F
 thermocouple connection M9x1
 gas inlet maximum pressure 50 mbar
 ambient temperature 0÷60°C
 capillary length 1050 mm
 bulb \varnothing 5x104 mm
 delivered without lid, knob and flanges



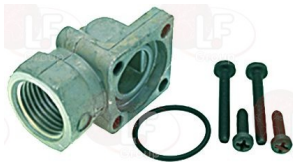
SIT 0.710.653

3182003 MAGNETIC UNIT SIT
 \varnothing head 25 mm - \varnothing end 17 mm - length 56 mm
 for valve SIT AC2 - VR8-MINISIT



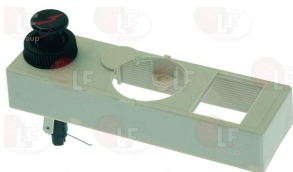
SIT 0.006.443

3523038 MINISIT ELBOW FLANGE \varnothing 1/2"F
 with screws and "O" ring



SIT

3001071 MINISIT PIEZO IGNITER WITH COVER
 male faston 2.4 mm



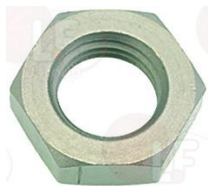
SIT 0.073.005

SIT 0.073.203

SIT 0.073.006

SIT 0.073.015

3523061 NUT \varnothing 1/4"x6 mm



SIT 0.992.032

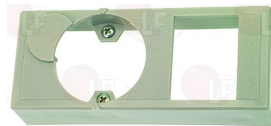
Suitable for:

3523035 KNOB MINISIT BLACK \varnothing 37 mm



SIT 0.916.124

3523047 MINISIT COVER



SIT 0.903.052

3523037 MINISIT ELBOW FLANGE \varnothing 3/8"
 with screws and "O" ring



SIT

3523040 MINISIT SENSING ELEMENT 100÷340°C
 capillary length 1050 mm
 bulb \varnothing 5x70 mm



SIT 0.906.270

SIT 0.928.561

3523060 OIL SEAL FITTING \varnothing 6.5 mm
 internal thread M10x0.75 - external thread M14x1.5



SIT 0.974.502



Suitable for:

3020082 OLIVE FOR 12 mm Ø PIPE



SIT 0.957.007

3348044 PIPE OLIVE Ø 10 mm
for model PEL 20 - 21



SIT 0.957.004

3523036 REDUCTION STRAIGHT Ø 3/8"F - Ø 1/2"F
in brass with internal and external thread
Ø internal thread 3/8"F - Ø external thread 1/2"F
for MINISIT flange



SIT 0.974.074

SIT

Suitable for:

3020079 PIPE FITTING Ø 12 mm
thread Ø 3/8"F



SIT 0.958.025

3348041 PIPE OLIVE Ø 16 mm
for model PEL 23



SIT 0.957.008



Pilot burners and accessories

3020036 PILOT BURNER SIT 3 FLAMES
multigas type with nozzle Ø 0.35 mm
with 3 position bracket



SIT G1801339

SIT 0.190.083

3020102 HEXAGON HEAD SCREW 3/16"x18 mm



SIT 0.953.007

5014757 CONNECTION PIPE Ø 6 mm
thread M10x1 mm



SIT 0.958.047

4058525 NOZZLE FOR PILOT BURNER Ø 0.30 mm



SIT 0.977.029



Suitable for:

3020083 NUT & OLIVE \varnothing 4 mm



SIT 0.958.030

3020082 OLIVE FOR 12 mm \varnothing PIPE



SIT 0.957.007

3020081 OLIVE FOR 6 mm \varnothing PIPE



SIT 0.957.001

3020308 PILOT ASSEMBLY WITH NOZZLE \varnothing 0.40 mm



SIT 0.901.405

3020156 PILOT JET \varnothing 0.25 mm



SIT 0.977.051

5015516 PILOT NOZZLE \varnothing 0.40 mm



SIT 0.977.032

SIT

Suitable for:

3020084 NUT & OLIVE \varnothing 6 mm



SIT 0.958.031

**3348036 OLIVE FOR 4 mm \varnothing PIPE
for model PEL 21-22**



**3020097 PILOT AERATION REGULATOR
internal \varnothing 7 mm - external \varnothing 9 mm
height 10 mm**



SIT 0.912.001

3020054 PILOT JET \varnothing 0.20 mm



SIT 0.977.030

3020055 PILOT JET \varnothing 0.35 mm



SIT 0.977.031

3500269 PILOT NOZZLE \varnothing 0.45 mm



SIT 0.977.033





Suitable for:

3020105 PILOT WITH 0.20 mm ø JET



SIT 0.901.067

3020107 PILOT WITH 0.35 mm ø JET



SIT

SIT 0.901.404

**3020077 PIPE FITTING ø 4 mm
thread M10x1**



SIT 0.958.013

**3020294 ROUND IGNITION ELECTRODE ø 7x44 mm
M faston M4x1 mm
overall length 67 mm**



**3020060 SPARKING PLUG ROUND ø 7x44 mm
faston M 4x1 mm
overall length 82 mm
model CB505/021 Junkers
for model P502F**



SIT 0.915.015

SIT 0.915.024

SIT

Suitable for:

3020106 PILOT WITH 0.25 mm ø JET



SIT

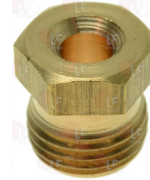
SIT 0.901.210

**3020079 PIPE FITTING ø 12 mm
thread ø 3/8" F**



SIT 0.958.025

**3020078 PIPE FITTING ø 6 mm
thread M10x1**



SIT 0.958.011

**3001003 ROUND SPARKING PLUG ø 7x44 mm
male faston M4x1 mm
total length 65 mm**



SIT 0.915.036

SIT 0.915.044

**3020124 SPARKING PLUG ROUND ø 7x44 mm
connection ø 2.4 mm
overall length 58 mm**



SIT 0.915.037





Suitable for:

3020365 SPARKING PLUG ROUND \varnothing 7x44 mm
connection \varnothing 2.4 mm
overall length 52 mm



SIT 0.915.025

3020103 THREE-POSITION BRACKET



SIT 0.978.003

3020251 TARGET ONE-FLAME PILOT BURNER SIT
without sparking plug, gas nozzle and gasket



SIT 0.140.026

3020085 FITTING FOR SPARKING PLUG FIXING M10x1mm



SIT 0.974.037

5022050 NOZZLE FOR PILOT BURNER \varnothing 0.50 mm



SIT 0.977.114

3348036 OLIVE FOR 4 mm \varnothing PIPE
for model PEL 21-22



SIT



Suitable for:

3020110 THREE-FLAME DEFLECTOR



SIT 0.975.004

3020104 THREE-POSITION BRACKET CLAMP



SIT 0.978.004

5014757 CONNECTION PIPE \varnothing 6 mm
thread M10x1 mm



SIT 0.958.047

3020200 FITTING FOR THERMOCOUPLE \varnothing 6.5 mm
thread M10x1



SIT 0.974.036

3020114 OLIVE FOR PIPE \varnothing 6 mm



SIT 0.957.010

3020201 PILOT GAS JET \varnothing 0.14 mm

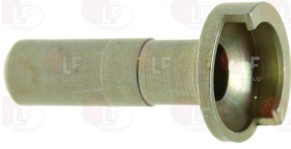


SIT 0.977.115



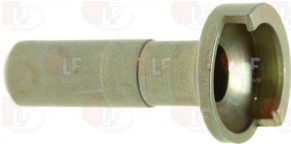
Suitable for:

3020042 PILOT GAS JET \varnothing 0.19 mm



SIT 0.977.092

3020202 PILOT GAS JET \varnothing 0.27 mm



SIT 0.977.113

3020543 PILOT GAS JET \varnothing 0.38 mm



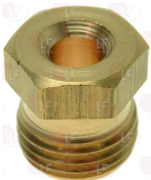
SIT 0.977.047

**3020077 PIPE FITTING \varnothing 4 mm
thread M10x1**



SIT 0.958.013

**3020078 PIPE FITTING \varnothing 6 mm
thread M10x1**



SIT 0.958.011

SIT

Suitable for:

3020542 PILOT GAS JET \varnothing 0.20 mm



SIT 0.977.106

3020043 PILOT GAS JET \varnothing 0.36 mm



SIT 0.977.091

3020113 PILOT OLIVE FOR PIPE \varnothing 4 mm



SIT 0.957.009

**3348029 PIPE FITTING \varnothing 4 mm
thread M10x1
for model PEL 21-22**



**3020294 ROUND IGNITION ELECTRODE \varnothing 7x44 mm
M faston M4x1 mm
overall length 67 mm**





Suitable for:

3001003 ROUND SPARKING PLUG \varnothing 7x44 mm
male faston M4x1 mm
total length 65 mm



SIT 0.915.036

SIT 0.915.044

3020124 SPARKING PLUG ROUND \varnothing 7x44 mm
connection \varnothing 2.4 mm
overall length 58 mm



SIT 0.915.037

3020010 TARGET PILOT BURNER SIT 2 FLAMES
supplied without sparking plug, nozzle and gasket
with thermocouple fitting



SIT 0.140.015

3020085 FITTING FOR SPARKING PLUG FIXING M10x1mm



SIT 0.974.037

5022050 NOZZLE FOR PILOT BURNER \varnothing 0.50 mm



SIT 0.977.114

SIT

Suitable for:

3020060 SPARKING PLUG ROUND \varnothing 7x44 mm
faston M 4x1 mm
overall length 82 mm
model CB505/021 Junkers
for model P502F



SIT 0.915.015

SIT 0.915.024

3020365 SPARKING PLUG ROUND \varnothing 7x44 mm
connection \varnothing 2.4 mm
overall length 52 mm



SIT 0.915.025

5014757 CONNECTION PIPE \varnothing 6 mm
thread M10x1 mm



SIT 0.958.047

3020200 FITTING FOR THERMOCOUPLE \varnothing 6.5 mm
thread M10x1



SIT 0.974.036

3020114 OLIVE FOR PIPE \varnothing 6 mm



SIT 0.957.010





Suitable for:

3348036 OLIVE FOR 4 mm Ø PIPE
for model PEL 21-22



3020042 PILOT GAS JET Ø 0.19 mm



SIT 0.977.092

3020202 PILOT GAS JET Ø 0.27 mm



SIT 0.977.113

3020543 PILOT GAS JET Ø 0.38 mm



SIT 0.977.047

3020113 PILOT OLIVE FOR PIPE Ø 4 mm



SIT 0.957.009

3348029 PIPE FITTING Ø 4 mm
thread M10x1
for model PEL 21-22



SIT

Suitable for:

3020201 PILOT GAS JET Ø 0.14 mm



SIT 0.977.115

3020542 PILOT GAS JET Ø 0.20 mm



SIT 0.977.106

3020043 PILOT GAS JET Ø 0.36 mm



SIT 0.977.091

3020086 PILOT GASKET



SIT 0.948.060

3020077 PIPE FITTING Ø 4 mm
thread M10x1



SIT 0.958.013

3020078 PIPE FITTING Ø 6 mm
thread M10x1



SIT 0.958.011





Suitable for:

3020294 ROUND IGNITION ELECTRODE \varnothing 7x44 mm
M faston M4x1 mm
overall length 67 mm



3020060 SPARKING PLUG ROUND \varnothing 7x44 mm
faston M 4x1 mm
overall length 82 mm
model CB505/021 Junkers
for model P502F



SIT 0.915.015

SIT 0.915.024

3020365 SPARKING PLUG ROUND \varnothing 7x44 mm
connection \varnothing 2.4 mm
overall length 52 mm



SIT 0.915.025

3020006 THREE-FLAME PILOT BURNER SIT
multigas with jet \varnothing 0.20 mm
with 3 positions bracket



SIT G1801332

SIT 0.100.001

3020102 HEXAGON HEAD SCREW 3/16"x18 mm



SIT 0.953.007

SIT



Suitable for:

3001003 ROUND SPARKING PLUG \varnothing 7x44 mm
male faston M4x1 mm
total length 65 mm



SIT 0.915.036

SIT 0.915.044

3020124 SPARKING PLUG ROUND \varnothing 7x44 mm
connection \varnothing 2.4 mm
overall length 58 mm



SIT 0.915.037

5014757 CONNECTION PIPE \varnothing 6 mm
thread M10x1 mm



SIT 0.958.047

4058525 NOZZLE FOR PILO BURNER \varnothing 0.30 mm



SIT 0.977.029



Suitable for:

3020083 NUT & OLIVE \varnothing 4 mm



SIT 0.958.030

3020082 OLIVE FOR 12 mm \varnothing PIPE



SIT 0.957.007

3020081 OLIVE FOR 6 mm \varnothing PIPE



SIT 0.957.001

3020308 PILOT ASSEMBLY WITH NOZZLE \varnothing 0.40 mm



SIT 0.901.405

3020156 PILOT JET \varnothing 0.25 mm



SIT 0.977.051

5015516 PILOT NOZZLE \varnothing 0.40 mm



SIT 0.977.032

SIT

Suitable for:

3020084 NUT & OLIVE \varnothing 6 mm



SIT 0.958.031

**3348036 OLIVE FOR 4 mm \varnothing PIPE
for model PEL 21-22**



**3020097 PILOT AERATION REGULATOR
internal \varnothing 7 mm - external \varnothing 9 mm
height 10 mm**



SIT 0.912.001

3020054 PILOT JET \varnothing 0.20 mm



SIT 0.977.030

3020055 PILOT JET \varnothing 0.35 mm



SIT 0.977.031

3500269 PILOT NOZZLE \varnothing 0.45 mm



SIT 0.977.033





Suitable for:

3020105 PILOT WITH 0.20 mm Ø JET



SIT 0.901.067

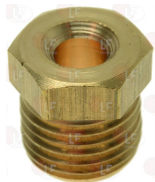
3020107 PILOT WITH 0.35 mm Ø JET



SIT

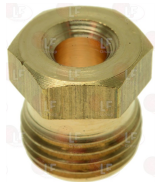
SIT 0.901.404

**3020077 PIPE FITTING Ø 4 mm
thread M10x1**



SIT 0.958.013

**3020078 PIPE FITTING Ø 6 mm
thread M10x1**



SIT 0.958.011

**3020294 ROUND IGNITION ELECTRODE Ø 7x44 mm
M faston M4x1 mm
overall length 67 mm**



SIT

Suitable for:

3020106 PILOT WITH 0.25 mm Ø JET



SIT

SIT 0.901.210

**3020079 PIPE FITTING Ø 12 mm
thread Ø 3/8" F**



SIT 0.958.025

**5033138 PIPE FITTING Ø 4 mm
thread Ø 1/8"**



SIT

**5027953 PIPE OLIVE Ø 4 mm
for COPRECI CAL3200**



SIT

**3001003 ROUND SPARKING PLUG Ø 7x44 mm
male faston M4x1 mm
total length 65 mm**



SIT 0.915.036

SIT 0.915.044





Suitable for:

3020060 SPARKING PLUG ROUND \varnothing 7x44 mm
faston M 4x1 mm
overall length 82 mm
model CB505/021 Junkers
for model P502F



SIT 0.915.015

SIT 0.915.024

3020365 SPARKING PLUG ROUND \varnothing 7x44 mm
connection \varnothing 2.4 mm
overall length 52 mm



SIT 0.915.025

3020103 THREE-POSITION BRACKET



SIT 0.978.003

3020012 TWO-FLAME PRINTED PILOT BURNER SIT
without sparking plug, gas nozzle and gasket
thermocouple fitting included



SIT 0.160.103

3020085 FITTING FOR SPARKING PLUG FIXING M10x1mm



SIT 0.974.037

SIT

Suitable for:

3020124 SPARKING PLUG ROUND \varnothing 7x44 mm
connection \varnothing 2.4 mm
overall length 58 mm



SIT 0.915.037

3020110 THREE-FLAME DEFLECTOR



SIT 0.975.004

3020104 THREE-POSITION BRACKET CLAMP



SIT 0.978.004

5014757 CONNECTION PIPE \varnothing 6 mm
thread M10x1 mm



SIT 0.958.047

3020200 FITTING FOR THERMOCOUPLE \varnothing 6.5 mm
thread M10x1



SIT 0.974.036





Suitable for:

3020541 NOZZLE FOR PILOT BURNER 0.35 mm



SIT 0.977.125

3348036 OLIVE FOR 4 mm ø PIPE
for model PEL 21-22



3020086 PILOT GASKET



SIT 0.948.060

3020157 PILOT JET ø 0.25 mm



SIT 0.977.123

3020041 PILOT JET ø 0.41 mm



SIT 0.977.118

3020077 PIPE FITTING ø 4 mm
thread M10x1



SIT 0.958.013

SIT

Suitable for:

3020111 OLIVE FOR 4 mm ø PIPE



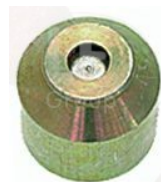
SIT 0.957.014

3020112 OLIVE FOR 6 mm ø PIPE



SIT 0.957.015

3020557 PILOT JET ø 0.20 mm



SIT 0.977.156

3020040 PILOT JET ø 0.30 mm



SIT 0.977.122

3020187 PILOT NOZZLE ø 0.51 mm



SIT 0.977.119

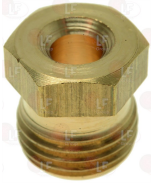
3348029 PIPE FITTING ø 4 mm
thread M10x1
for model PEL 21-22





Suitable for:

3020078 PIPE FITTING \varnothing 6 mm
thread M10x1



SIT 0.958.011

3020365 SPARKING PLUG ROUND \varnothing 7x44 mm
connection \varnothing 2.4 mm
overall length 52 mm



SIT 0.915.025

SIT

Suitable for:

3020060 SPARKING PLUG ROUND \varnothing 7x44 mm
faston M 4x1 mm
overall length 82 mm
model CB505/021 Junkers
for model P502F



SIT 0.915.015

SIT 0.915.024



Pressure switches

3320051 ADJUSTABLE PRESSURE SWITCH \varnothing 1/4" M
operating pressure regulation 5-20 mbar
differential 3 mbar
contact capacity 16(4)A 250V
max operating temperature 85°C



SIT 0.360.001

3320053 ADJUSTABLE PRESSURE SWITCH \varnothing 1/4" M
operating pressure regulation 10-50 mbar
differential 3 mbar
contact capacity 16(4)A 250V
max operating temperature 85°C
for OVEN



SIT 0.360.002

3320059 OVEN PRESS.SWITCH 0.35-0.50 BAR 6A 250V
fitting \varnothing 1/8" M



SIT 0.340.007

4006536 PRESSURE SWITCH 0.80/0.60 BAR 1.5A 250V



SIT 0.380.013

Thermocouples and accessories

3440076 CIRCUIT BREAK CONTACT M10x1



SIT 0.974.403

3440151 CONNECTOR FOR DISPLAY DEVICE M9x1



SIT 0.974.070



Suitable for:

SIT



3440085 CUT-OFF THERMOCOUPLE M9x1 100 cm
cut-off contact with cables 100 cm



SIT

Suitable for:

3440065 CUT-OFF THERMOCOUPLE M9x1 32 cm
cut-off contact with terminals



SIT 0.270.407

3440150 DISPLAY DEVICE FOR THERMOCOUPLES



SIT 0.926.106

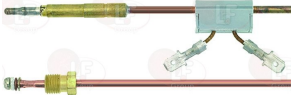
3440067 INTERRUPTED THERMOCOUPLE M9x1 100 cm.
interrupted contact with terminals



SIT G1902221

SIT 0.270.400

3440066 INTERRUPTED THERMOCOUPLE M9x1 60 cm
interrupted contact with fastons



SIT 0.270.408

3440016 INTERRUPTION CONNECTOR ASA M11x32



SIT 0.974.404

3440014 INTERRUPTION CONNECTOR M8x1



SIT 0.974.401

3440013 SLOTTED FITTING ASA M11x32



SIT G6032012

SIT G7032012

3440010 SLOTTED FITTING M8x1



SIT G6032011

SIT G7032011

3440011 SLOTTED FITTING M9x1



SIT G6032010

SIT G7032010

2100820 THERMOCOUPLE SIT QUICK M9x1 40 cm



SIT 0.290.013

3440043 THERMOCOUPLE ASA SIT 100 cm



SIT 0.200.039



SIT



Suitable for:

3440045 THERMOCOUPLE ASA SIT 150 cm



SIT G1040415

SIT 0.200.040

Suitable for:

3440040 THERMOCOUPLE ASA SIT 40 cm



SIT 0.200.036

3440041 THERMOCOUPLE ASA SIT 60 cm



SIT 0.200.037

3440042 THERMOCOUPLE ASA SIT 85 cm



SIT 0.200.038

3440074 THERMOCOUPLE LF 90 cm
7 slotted elements kit



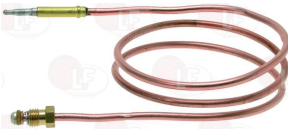
SIT G1725004

3440251 THERMOCOUPLE M8x1 32cm THREAD M8x1



SIT G1041113

3440047 THERMOCOUPLE M8X1 75 cm



SIT 0.260.138

3440847 THERMOCOUPLE SIT M8x1 75 cm - 10 PCS



SIT 0.260.138

3440133 THERMOCOUPLE SIT M10x1 100 cm



SIT 0.200.031

3440134 THERMOCOUPLE SIT M10x1 120 cm



SIT 0.200.034

3440135 THERMOCOUPLE SIT M10x1 150 cm



SIT 0.200.035

3440143 THERMOCOUPLE SIT M10x1 150 cm COUPLING M



SIT 0.200.072



Suitable for:

3440132 THERMOCOUPLE SIT M10x1 40 cm



SIT 0.200.025

3440126 THERMOCOUPLE SIT M10x1 75 cm



SIT 0.200.029

3440006 THERMOCOUPLE SIT M10X1 32 cm



SIT G1040313

SIT 0.006.151

SIT 0.200.024

3440030 THERMOCOUPLE SIT M8x1 100 cm



SIT 0.200.127

3440055 THERMOCOUPLE SIT M8x1 100 cm THREAD M8x1



SIT 0.200.047

3440031 THERMOCOUPLE SIT M8x1 120 cm



SIT 0.200.129

SIT



Suitable for:

3440141 THERMOCOUPLE SIT M10x1 40 cm COUPLING M8



SIT G1041311

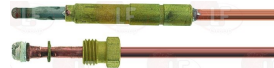
SIT 0.200.064

3440142 THERMOCOUPLE SIT M10x1 75 cm COUPLING M8



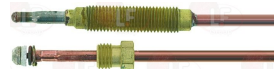
SIT 0.200.067

3440830 THERMOCOUPLE SIT M8x1 100 cm - 10 PCS



SIT 0.200.127

3440855 THERMOCOUPLE SIT M8x1 100 cm - 10 PCS GIUNTO M8x1



SIT 0.200.047

3440831 THERMOCOUPLE SIT M8x1 120 cm - 10 PCS



SIT 0.200.129

Suitable for:

Suitable for:

3440056 THERMOCOUPLE SIT M8x1 120 cm THREAD M8x1



SIT G1041115

SIT 0.200.049

3440032 THERMOCOUPLE SIT M8x1 150 cm



SIT 0.200.130

3440832 THERMOCOUPLE SIT M8x1 150 cm - 10 PCS



SIT 0.200.130

3440057 THERMOCOUPLE SIT M8x1 150 cm THREAD M8x1



SIT 0.200.050

3440857 THERMOCOUPLE SIT M8x1 150 cm - 10 PCS GIUNTO M8x1



SIT 0.200.050

3440027 THERMOCOUPLE SIT M8x1 32 cm



SIT 0.200.121

3440827 THERMOCOUPLE SIT M8x1 32 cm - 10 PCS



SIT 0.200.121

3440068 THERMOCOUPLE SIT M8x1 32 cm



SIT 0.260.139

3440051 THERMOCOUPLE SIT M8x1 32 cm.THREAD M8x1



SIT 0.200.042

3440851 THERMOCOUPLE SIT M8x1 32 cm - 10 PCS. GIUNTO M8x1



SIT 0.200.042



Suitable for:

3440028 THERMOCOUPLE SIT M8x1 60 cm



SIT 0.200.124

3440053 THERMOCOUPLE SIT M8x1 60 cm THREAD M8x1



SIT 0.200.044

3440029 THERMOCOUPLE SIT M8x1 85 cm



SIT 0.200.126

3440054 THERMOCOUPLE SIT M8x1 85 cm THREAD M8x1



SIT 0.200.046

3440052 THERMOCOUPLE SIT M8X1 45 cm COUPLING M8x



SIT 0.200.043

3440046 THERMOCOUPLE SIT M8X1 60 cm



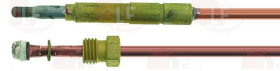
SIT 0.260.137

SIT



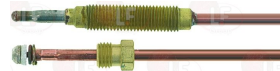
Suitable for:

3440828 THERMOCOUPLE SIT M8x1 60 cm - 10 PCS



SIT 0.200.124

**3440853 THERMOCOUPLE SIT M8x1 60 cm - 10 PCS
GIUNTO M8x1**



SIT 0.200.044

SIT 0.290.031

3440829 THERMOCOUPLE SIT M8x1 85 cm - 10 PCS



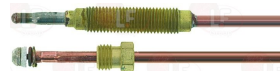
SIT 0.200.126

**3440854 THERMOCOUPLE SIT M8x1 85 cm - 10 PCS
GIUNTO M8x1**



SIT 0.200.046

**3440852 THERMOCOUPLE SIT M8x1 45 cm - 10 PCS
GIUNTO M8x1**



SIT 0.200.043

3440846 THERMOCOUPLE SIT M8x1 60 cm - 10 PCS



SIT 0.260.137



SIT



Suitable for:

3440061 THERMOCOUPLE SIT M9x1 100 cm THREAD M8x1



SIT 0.200.058

Suitable for:

3440861 THERMOCOUPLE SIT M9x1 100 cm - 10 PCS GIUNTO M8x1



SIT 0.200.058

3440037 THERMOCOUPLE SIT M9x1 100 cm.



SIT G1040207

SIT 0.200.015

3440837 THERMOCOUPLE SIT M9x1 100 cm - 10 PCS



SIT G1040207

SIT 0.200.015

3440038 THERMOCOUPLE SIT M9x1 120 cm



SIT G1040209

SIT 0.200.019

3440838 THERMOCOUPLE SIT M9x1 120 cm - 10 PCS



SIT G1040209

SIT 0.200.019

3440062 THERMOCOUPLE SIT M9x1 120cm THREAD M8x1



SIT 0.200.060

3440039 THERMOCOUPLE SIT M9x1 150 cm



SIT 0.200.021

3440839 THERMOCOUPLE SIT M9x1 150 cm - 10 PCS



SIT 0.200.021

3440063 THERMOCOUPLE SIT M9x1 150 cm THREAD M8x1



SIT G1041208

SIT 0.200.061

3440863 THERMOCOUPLE SIT M9x1 150 cm - 10 PCS GIUNTO M8x1



SIT G1041208

SIT 0.200.061



Suitable for:

SIT



3440033 THERMOCOUPLE SIT M9x1 32 cm



SIT G1040213

SIT 0.200.003

Suitable for:

3440833 THERMOCOUPLE SIT M9x1 32 cm - 10 PCS



SIT G1040213

SIT 0.200.003

3440058 THERMOCOUPLE SIT M9x1 32 cm THREAD M8x1



SIT 0.200.052

3440858 THERMOCOUPLE SIT M9x1 32 cm - 10 PCS GIUNTO M8x1



SIT 0.200.052

3440080 THERMOCOUPLE SIT M9x1 40 cm.



SIT 0.200.005

3440880 THERMOCOUPLE SIT M9x1 40 cm - 10 PCS



SIT 0.200.005

3440034 THERMOCOUPLE SIT M9x1 50 cm



SIT 0.200.007

3440834 THERMOCOUPLE SIT M9x1 50 cm - 10 PCS



SIT 0.200.007

3440059 THERMOCOUPLE SIT M9x1 60 cm THREAD M8x1



SIT 0.200.055

3440859 THERMOCOUPLE SIT M9x1 60 cm - 10 PCS GIUNTO M8x1



SIT 0.200.055

3440035 THERMOCOUPLE SIT M9x1 60 cm.



SIT 0.200.009

3440835 THERMOCOUPLE SIT M9x1 60 cm - 10 PCS



SIT 0.200.009



Suitable for:

3440060 THERMOCOUPLE SIT M9x1 85 cm THREAD M8x1



SIT G1041214

SIT 0.200.057

Suitable for:

3440860 THERMOCOUPLE SIT M9x1 85 cm - 10 PCS GIUNTO M8x1



SIT G1041214

SIT 0.200.057

3440036 THERMOCOUPLE SIT M9x1 85 cm.



SIT 0.200.013

SIT 0.290.017

3440836 THERMOCOUPLE SIT M9x1 85 cm - 10 PCS



SIT 0.200.013

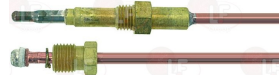
SIT 0.290.017

3440009 THERMOCOUPLE SIT M9X1 100 cm M8x1



SIT 0.200.402

3440809 THERMOCOUPLE SIT M9x1 100 cm - 10 PCS GIUNTO M8x1



SIT 0.200.402

3440049 THERMOCOUPLE SIT M9X1 75 cm



SIT 0.200.011

3440849 THERMOCOUPLE SIT M9x1 75 cm - 10 PCS



SIT 0.200.011

5034845 THERMOCOUPLE SIT QUICK M10x1 85 cm



SIT 0.290.168

3440091 THERMOCOUPLE SIT QUICK M8x1 150 cm



SIT 0.290.010

3440081 THERMOCOUPLE SIT QUICK M8x1 45 cm



SIT 0.290.003

3440082 THERMOCOUPLE SIT QUICK M8x1 60 cm



SIT 0.290.004



Suitable for:

SIT



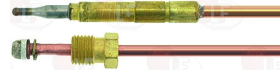
3440094 THERMOCOUPLE SIT QUICK M9x1 100 cm



SIT 0.290.019

Suitable for:

3440894 THERMOCOUP.SIT QUICK M9x1 100 cm - 10 PCS



SIT 0.290.019

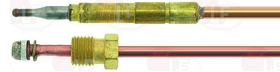
3440095 THERMOCOUPLE SIT QUICK M9x1 150 cm



SIT 0.290.021

SIT 0.290.022

3440895 THERMOCOUP.SIT QUICK M9x1 150 cm - 10 PCS



SIT 0.290.021

SIT 0.290.022

3440083 THERMOCOUPLE SIT QUICK M9x1 32 cm



SIT 0.290.012

3440078 THERMOCOUPLE SIT QUICK M9x1 50 cm.



SIT 0.290.015

3440092 THERMOCOUPLE SIT QUICK M9x1 60 cm



SIT 0.290.016

3440892 THERMOCOUP.SIT QUICK M9x1 60 cm - 10 PCS



SIT 0.290.016

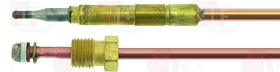
3440093 THERMOCOUPLE SIT QUICK M9x1 85 cm



SIT 0.290.018

SIT 0.290.172

3440893 THERMOCOUP.SIT QUICK M9x1 85 cm - 10 PCS



SIT 0.290.018

SIT 0.290.172

**3440277 THERMOCOUPLE UNIV. M9x1 120 cm M6x0.75
kit with 5 milled components**



SIT G1724003

**3440077 THERMOCOUPLE UNIV. M9x1 90 cm M6x0.75
kit with 5 milled components**



SIT G1724002



Suitable for:

3440177 THERMOCOUPLE UNIV. M9X1 60cm M6x0.75
kit with 5 milled components



SIT G1724001

SIT



Suitable for:

3440002 UNIVERSAL THERMOCOUPLE SIT 90 cm
this kit is composed of 10 slotted elements



SIT 0.208.002

3440099 UNIVERSAL THERMOCOUPLE 120 cm
10 slotted elements kit





















SIT 0.208.004

The data herewith contained may change without notice and LF SpA cannot be held responsible for possible errors stated or resulting by the use of this document. All rights reserved. No part of this publication may be reproduced without written permission by LF SpA.



Distributing Components, Spare Parts & Accessories in original quality worldwide

-
-  **LF SpA HEADQUARTERS**
via Voltri, 80 - 47522 Cesena (FC) ITALY
Tel. +39 0547 34 11 11 - Fax +39 0547 34 11 10
www.lfrcambi724.it - www.lfrcambi724.mobi
info@lfrcambi.it
Export Dept.: Tel. +39 0547 34 11 50 - Fax: +39 0547 34 11 55
www.lfspareparts724.com - www.lfspareparts724.mobi
export@lfspareparts.com
 -  **LF SpA HOUSEHOLD COMPONENTS DIVISION**
Via Padriciano, 34149 Trieste - Italia - AREA Science Park
Tel. +39 0547 34 12 42 - Fax +39 0547 34 12 48
www.lfspareparts724.com - www.lfspareparts724.mobi
info@lfspareparts.com
 -  **EPGC Sas FRANCE**
13, Rue des Forts - 59960 Neuville en Ferrain
Tel. +33 (0)3 20 25 06 21
Fax +33 (0)3 20 25 34 12
www.epgc.com
www.epgc724.mobi
epgc@epgc.com
 -  **LF GmbH GERMANY**
Junkersstrasse, 3 - D-82178 Puchheim - München
Tel. +49 89 89 45 78 66
Fax +49 89 89 45 78 88
www.lfersatzteile724.de
www.lfersatzteile724.mobi
info@lfersatzteile.de
 -  **LF China REPUBLIC OF CHINA**
Room 403, No.2, Huadu Mansion, Lane 422, Huanghua Rd.
Minhang Dist. - 201103 Shanghai
Tel. +86 (0)21 33 53 66 31
Fax +86 (0)21 33 53 66 32
www.lfspareparts724.com
www.lfspareparts724.mobi
china@lfspareparts.com
 -  **OOO LF RUSSIAN FEDERATION**
Ul. Anatoliya Zhivova, 8 - office 1 - 123100 Moscow
Tel./Fax +7 495 725 26 53
www.lfspareparts724.ru
www.lfspareparts724.mobi
info@lfspareparts.ru
 -  **LF Repuestos Horeca S.L.U. SPAIN**
Poligono Industrial Carpetania - C/Miguel Faraday, 8 - 28906 Getafe
Tel. +34 91 477 91 00
Fax +34 91 477 90 81
www.lfrepuestos-horeca724.es
www.lfrepuestos724.mobi
info@lfrepuestos.es
 -  **LF SpA Cesena (IT) Swiss Branch Steinhausen SWITZERLAND**
Sennweidstrasse, 45 - CH-6312 Steinhausen
Tel. +41 (0)41 760 15 80-1
Fax +41 (0)41 760 15 85
www.lfersatzteile724.ch
www.lfersatzteile724.mobi
info@lfersatzteile.ch
 -  **LF Spare Parts Ltd. UNITED KINGDOM**
A10a Lakeside Business Park, Broadway Lane
South Cerney, Gloucestershire GL7 5XL
Tel. +44 (0)1285 86 16 25
Fax +44 (0)1285 86 39 49
www.lfspareparts724.co.uk
www.lfspareparts724.mobi
info@lfspareparts.co.uk
 -  **AUSTRALIA AND NEW ZEALAND**
www.lfspareparts724.com
andrea.calvio@lfspareparts.com
 -  **AUSTRIA**
www.lfersatzteile724.at
info@lfersatzteile.at
 -  **BALKAN COUNTRIES**
www.lfspareparts724.com
matijaramov@lfspareparts.com
 -  **BALTIC COUNTRIES**
www.lfspareparts724.com
inara.silina@lfspareparts.com
 -  **CENTRAL AND EASTERN EUROPE**
www.lfspareparts724.cz
jiri.kremla@lfspareparts.cz
 -  **DENMARK**
www.lfspareparts724.dk
michael.leth@lfspareparts.com
 -  **JAPAN**
www.lfspareparts724.jp
hiroshi.ukai@lfspareparts.jp
 -  **SOUTH KOREA**
www.lfspareparts724.com
fabio.doni@lfspareparts.com
 -  **TURKEY**
www.lfyedekparca724.com
basar.ergun@lfyedekparca.com
 -  **USA AND CANADA**
www.lfspareparts724.us
sauro.dallaglio@lfspareparts.us
howard.truitt@lfspareparts.us