



Spare parts for:

Warewashing equipment



Suitable for:

WINTERHALTER



This catalogue is automatically generated.
Therefore, the sequence of the items might
not be always shown at best.

Updates will be issued in case of additions
and/or amendments.

Suitable universal spare parts may not be included





Suitable for:

WINTERHALTER



Suitable for:

Air traps

3060129 AIR CHAMBER SET



WINTERHALTER 60003525

3060020 AIR CHAMBER 90x80 mm



WINTERHALTER 5504024

WINTERHALTER 5504030

5023667 CONTACTOR VOLUMETRIC SET WSE



WINTERHALTER 60003511

WINTERHALTER 60003512

Bumpers

3786737 ANGLE GASKET 63x63x17.5 mm



WINTERHALTER 61005559

7106805 ANGULAR GASKET 40x40 mm



WINTERHALTER 61005256

Bushings

3743304 BUSHING FOR WASH ARM ASSEMBLY



WINTERHALTER 61002263

5004599 WASH ARM BUSHING



WINTERHALTER 3501161

Castors, rollers and accessories

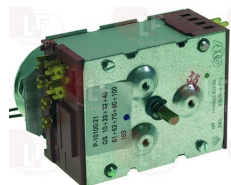
7100259 ROLL KIT \varnothing 40 mm COMPLETE



WINTERHALTER 61005333

Controllers and changeover switches

3446031 TIMER AKOP10100/21 240V 50/60Hz



WINTERHALTER 3105100

3446030 TIMER AKOP10900/34 240V 50HZ
with electromagnet



WINTERHALTER 3105119

3446049 TIMER 5 MINUTS 240V 50HZ



WINTERHALTER 3105106

Curtains

5050143 CURTAIN 645x515 mm



WINTERHALTER 70007239

WINTERHALTER 70007240

Door gaskets for dishwashers

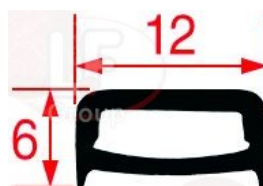
5023447 DOOR GASKET 430x370 mm



WINTERHALTER 30000316

WINTERHALTER 62003065

5034498 DOOR GASKET 565x368 mm
per LAVASTOVIGLIE GS215



WINTERHALTER 30000317

WINTERHALTER 62003066

WINTERHALTER 3000317

WINTERHALTER 60003066

Drain assembly

5044700 DRAIN ASSEMBLY \varnothing 109 mm
thread \varnothing 84 mm - outlet pipe \varnothing 41 mm



WINTERHALTER 61006178



Suitable for:

WINTERHALTER



Suitable for:

Drain pumps

3122456 DRAIN ELECTRO-PUMP 65W 240V 50Hz



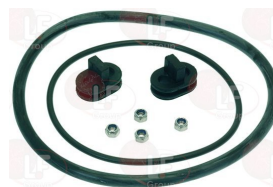
WINTERHALTER 3102480

5065422 DRAIN GROUP BASIS FOR PUMP



WINTERHALTER 30000169

3160517 KIT GASKET FOR PUMP



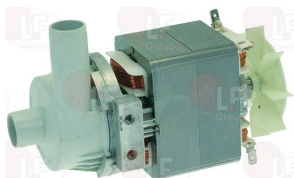
WINTERHALTER 60003591

3490001 SENSOR FOR MURKY WATER \varnothing 30 mm



WINTERHALTER 30000168

3122446 DRAIN PUMP 170W 230V 50Hz
inlet external \varnothing 24 mm - outlet external \varnothing 24 mm



WINTERHALTER 3102410

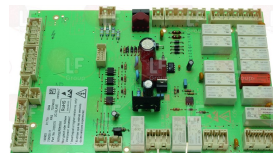
Electronic printed-circuit boards

7106436 CONNECTING CABLE 5 THREADS 300 mm



WINTERHALTER 60003174

5048154 ELECTRONIC BOARD SLAVE MODULE
size 245x160 mm



WINTERHALTER 30000170

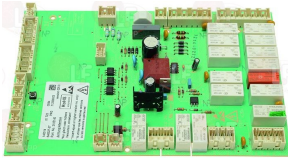


WINTERHALTER



Suitable for:

3390211 ELECTRONIC CONTROL BOARD
sizes 245x160 mm



WINTERHALTER 3105139

WINTERHALTER 3105140

WINTERHALTER 3105141

Suitable for:

3390193 KEYBOARD CIRCUIT BOARD
size 200x50 mm



WINTERHALTER 3124222

3390372 LEVEL PROBE CARD 12V 80x20 mm



WINTERHALTER 3113164

5048153 PROGRAM CONTROL CIRCUIT BOARD MASTER
size 220x65 mm



WINTERHALTER 30000181

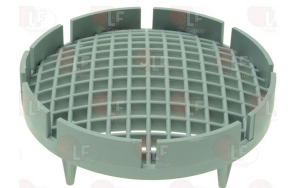
5045297 WATER LEVEL SENSOR BOARD
dimensions 80x40 mm
for DISHWASHER WINTERHALTER GS501



WINTERHALTER 3113165

Filters

7104886 BOTTOM FILTER \varnothing 138 mm



WINTERHALTER 60003259

5035536 COMPLETE BASKET FILTER
dimensions 135x64x107 mm



WINTERHALTER 60003039

5065420 CYLINDRIC FILTER \varnothing 127 mm



WINTERHALTER 60004463

5065449 DRAWER FILTER 280x100x105 mm



WINTERHALTER 61006262

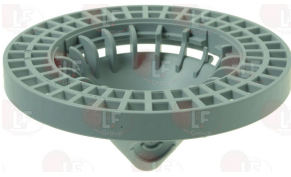


WINTERHALTER



Suitable for:

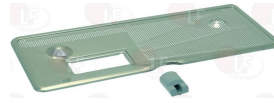
5061137 FILTER \varnothing 139 mm



WINTERHALTER 60004466

Suitable for:

5035248 FILTER WITH SUPPORT 550x237 mm



WINTERHALTER 60004142

5017984 FLAT SURFACE FILTER 300x110 mm



WINTERHALTER 62001943

5036113 PUMP SUCTION FILTER \varnothing 72 mm



WINTERHALTER 62001956

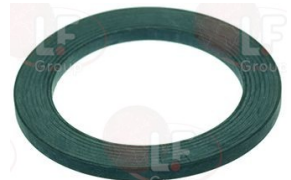
5026773 TANK FILTER 291x273 mm



WINTERHALTER 61004907

Gaskets and seals

5005222 GASKET FLAT EPDM \varnothing 36x26x2 mm
for DISHWASHER GR66-GR62/2-GR66/1-GS10/2-GS24-
GS29-GS41-GS405-GS71-GS72-GS501-GS502-GS515-
GS41/4-GS41/4S-WKT1000-WKT1200-WKTS



WINTERHALTER 2701003

5040152 GASKET 235x90 mm
for DISHWASHER GS515



WINTERHALTER 82000014

Gears

5051806 PIN \varnothing 6X30 mm



WINTERHALTER 70200383

5049807 CHAIN JOINT 57x30x17.5 mm



WINTERHALTER 70200382



Guides

5042788 SLIDE FOR DOOR 915x39x34 mm



WINTERHALTER 6500448

Handles

5028909 DOOR HANDLE 460x53 mm
for WAREWASHER GS 24



WINTERHALTER 5515164

5005284 DOOR HANDLE 598 mm
with installation kit



WINTERHALTER 5515163

5044664 HANDLE



WINTERHALTER 61005204

WINTERHALTER 61008983

5031667 SNAP BRAKE COVERS OPENING



WINTERHALTER 61005048

5035866 CAP CLOSURE HANDLE 55x26x21 mm



WINTERHALTER 61004866

Hinges, catches and accessories

3053028 DOOR HINGE



WINTERHALTER 0230009

WINTERHALTER 2602301

WINTERHALTER 3501051

3053641 DOOR PIN \varnothing 7 mm
thread M5



WINTERHALTER 60003147



Suitable for:

WINTERHALTER



Suitable for:

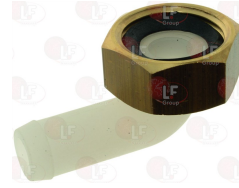
Hose-end fittings

3064002 ELBOW
in plastic for branching
for rinse tube-tank connection



WINTERHALTER 2906500

5029633 ELBOW HOSE END FITTINGS
thread 3/4" F hose end fitting ø 14 mm



WINTERHALTER 6002474

5022422 HOSE END FITTINGS 3/4" - ø 14 mm



WINTERHALTER 6002453

3315043 WATER INLET COUPLING SET



WINTERHALTER 5531007

Hydraulic piping

5062526 ELBOW PLASTIC TUBE ø 40 mm



WINTERHALTER 6002786

3090734 PVC HOSE ø 5x8 mm - 10 m
food-safe



WINTERHALTER 4001027

Indicator lights

3221118 RED LED LAMP 12V ø 7 mm



WINTERHALTER 310811

3221099 YELLOW LED LAMP 12V ø 7 mm



WINTERHALTER 3108112

3221374 WHITE INDICATOR LAMP 230V
mounting hole 30x22 mm



WINTERHALTER 3108064

3319039 WHITE INDICATOR LIGHT TEMPERATURE 230V
mounting hole 30x22 mm



WINTERHALTER 3108054

WINTERHALTER 3108116

Interference suppression filters

3160366 INTERFERENCE SUPPRESSION FILTER 250/440V



WINTERHALTER 3113072

Ironmongery (screws,nuts,washers)

5035265 CAP SCREW \varnothing 7x15 mm WITH SEEGER
internal thread M5x6 mm
for DISHWASHER GS501-GS502-GS515



WINTERHALTER 70005097

Knobs

3241856 BLACK KNOB \varnothing 70 mm 30-110°C
D shaft hole 6x4.6 mm



WINTERHALTER

Labels for control panels

5025846 CONTROL PANEL

5065423 LCD CONTROL PANEL MEMBRANE 268.5x60 mm



WINTERHALTER 3124223

WINTERHALTER 3124291

Levers

7106652 KIT LEVERS 98 mm



WINTERHALTER 60003778



Suitable for:

WINTERHALTER



Suitable for:

Magnets

5005281 MAGNET \varnothing 10x10 mm



WINTERHALTER 3124191

Manifolds for dishwashers

7100212 CYCLE DISTRIBUTOR COMPLETE



WINTERHALTER 61005184

5044702 DRAIN MANIFOLD
 \varnothing external 120 mm h 85 mm
hose-end fitting \varnothing 24 mm e \varnothing 16 mm



WINTERHALTER 61005186

5031384 KIT MEDIAMAT
2 hose end fittings \varnothing 13 and \varnothing 14 mm - thread 3/8"



WINTERHALTER 60003513

5065470 MANIFOLD WASH-OULET



WINTERHALTER 70004633

3064001 MANIFOLD 3/4"
made of plastic for branching
tank washing



WINTERHALTER 3501005

3061042 MEDIAMAT SET 175 mm



WINTERHALTER 30000113

3743317 UPPER BRANCHING PIPE



WINTERHALTER 3501017

Microswitches

3803061 FLOAT SWITCH GROUP KIT
contact NA



WINTERHALTER 5528255

3786680 GASKET OR 0240-30 EPDM



WINTERHALTER 2707026
WINTERHALTER 2707087

WINTERHALTER 2707066

WINTERHALTER 2707067

3803029 MAGNETIC MICRO SWITCH



WINTERHALTER 5528291

3240671 MAGNETIC MICRO-SWITCH
bulb \varnothing 8x48 mm - cable 2400 mm



WINTERHALTER 3124134

3240672 MAGNETIC MICRO-SWITCH
sizes 32x15x7 mm - cable 800 mm



WINTERHALTER 3124228

3803062 MAGNET FOR MICRO SWITCH 12.9x15x40 mm



WINTERHALTER 61006243

3240209 MAGNETIC MICROSWITCH 250V
dimensions 81x20x10 mm.
normally open



WINTERHALTER 3124190

WINTERHALTER 3124221

3803027 CHANGE OVER MICROSWITCH 16A 250V



5024044 MICRO-SWITCH - MAGNETIC NO
contact NO
cable length 1000 mm - magnet 32x15x7 mm



WINTERHALTER 3124224

5034497 MICROSWITCH MAGNETIC \varnothing 5x25 mm
cable 2250 mm



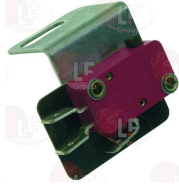
WINTERHALTER 3124240



Suitable for:

Suitable for:

3240208 MICROSWITCH WITH ANGLED PLATE
6A 250V



WINTERHALTER 5519007

Non-return and expansion valves

5048155 BACKFLOW CHECK VALVE KIT



WINTERHALTER 30000127

3526280 LATERAL VACUUM BREAKER VALVE



WINTERHALTER 3501194

3786682 GASKET FLAT EPDM ø 17x24x2 mm



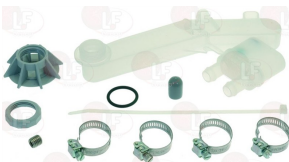
WINTERHALTER 62001366

5029619 NON-RETURN VALVE CAP
for DISHWASHER GR66



WINTERHALTER 61004545

5032100 NON RETURN VALVE KIT
3 hose ends fittings ø 13,5 mm - thread 3/4"



WINTERHALTER 60003846

7104065 NON RETURN VALVE KIT



WINTERHALTER 60003511

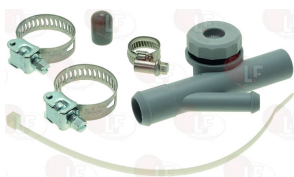
WINTERHALTER 62003680



WINTERHALTER



Suitable for: **3526289 NON-RETURN VALVE** Suitable for: **3526288 VALVE BACKFLOW PREVENTER 130x140 mm**



WINTERHALTER 60003514



WINTERHALTER 30000128

Pressure switches

3320044 PRESSURE SWITCH 0/30 mBAR
1 level



WINTERHALTER 3126044

Probes

3397212 DETERGENT SUCKING PROBE
dimensions \varnothing 25x425 mm



WINTERHALTER 30000010

3397200 TEMP.SENSOR 1700 MM SET FOR BOILER



WINTERHALTER 3125050

WINTERHALTER 3125051

WINTERHALTER 80003804

3397201 TEMPERATURE SENSOR FOR BOILER AND TANK



WINTERHALTER 70004624

3397199 THERMO SENSOR KIT 1000 m m FOR BOILER



WINTERHALTER 3125044

WINTERHALTER 80003803

Pump motors

3122449 ELECTRIC PUMP UP60-357 0.33HP
inlet external \varnothing 28 mm - outlet external \varnothing 26 mm
0.33HP 230V 50Hz 1.2A - capacitor 5 μ f
flow rate 160 L/min.



WINTERHALTER 3102051

WINTERHALTER 3102288

WINTERHALTER 3102477



Suitable for:

WINTERHALTER



Suitable for:

Pump motors

3122453 ELECTRIC PUMP UP60-442 0.18HP
inlet external \varnothing 28 mm - outlet external \varnothing 26 mm
0.18HP 230V 50Hz 1.4A - capacitor 5 μ F
flow rate 140 l/min.



WINTERHALTER 3102539

WINTERHALTER 3102561

WINTERHALTER 3102589

5036727 IMPELLER FOR PUMP \varnothing 74 mm
for DISHWASHER GS660



WINTERHALTER 3102466

3122851 ELECTRIC PUMP WP60-122 0.90HP
0.90HP 230/240V 50/60Hz - capacitor 10 μ f



WINTERHALTER 60003595

5045858 KIT IMPELLER KIT CLOSED FOR PUMP
external impeller \varnothing 95 mm - blades \varnothing 92 mm
for pump HANNING



WINTERHALTER 60003592

5035496 KIT IMPELLER KIT FOR PUMP
external impeller \varnothing 95 mm - blades \varnothing 75 mm



WINTERHALTER 60003593

Relays

3351039 SOCKET WITH TERMINALS 95.75 10A 250V



WINTERHALTER 3104157

Rinse aid containers and accessories

5052699 CONTAINER FOR DETERGENT
size 395x195x40 mm



WINTERHALTER 60003746

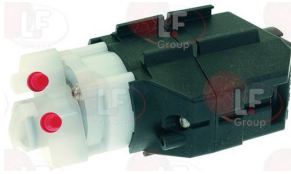
5034496 DETERGENT CONTAINER
dimensions 535x195x40 mm
for DISHWASHER GS215



WINTERHALTER 60003747

Rinse aid pumps and accessories

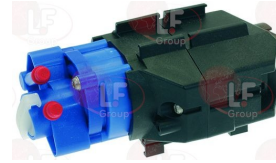
3090236 DETERGENT DOSER 115/240V 50/60Hz



WINTERHALTER 3102450

WINTERHALTER 3102453

3090237 RINSE AID DOSER 115/240V 50/60Hz



WINTERHALTER 3102597

WINTERHALTER 3102598

7107365 DOSING TUBE \varnothing 5x8x140 mm



WINTERHALTER 3102459

3090190 PERISTALTIC PUMP FOR DETERGENT
 mod. RPS20RMIP - Ext.size. 160 x 80 x 85 mm
 220/240 V - 50 Hz
 flow rate 0.28 L/h - 2.80 L/h

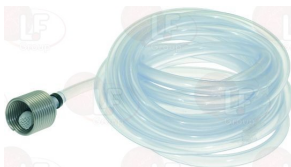


WINTERHALTER

3090354 ELBOW FITTING FOR HOSE 4x6
 for tank inlet
 in stainless steel



3090154 FOOT FILTER WITH 4 m PVC PIPE



3090196 HOSE NORPRENE



3090306 PERISTALTIC PUMP FOR DETERGENT PA-6
 flow rate: 6 L/h
 pressure: 0.1 bar
 santoprene hose
 230V 50Hz
 complete with mounting kit
 and conductivity probe



WINTERHALTER

3090126 MOUNTING KIT FOR PERISTALTIC PUMP
 including:
 4-meter PVC tube \varnothing 4x1
 1 inlet connector for tank
 1 foot valve with filter
 1 conductivity probe





Suitable for:

3090351 SANTOPRENE DIAPHRAGM-TUBE
with connections



WINTERHALTER



Suitable for:

3090303 PERISTALTIC PUMP FOR DETERGENT PR-4
adjustable flow rate: 0.6÷4 L/h
pressure: 0.1 bar
santoprene hose
230V 50Hz
complete with mounting kit



3090351 SANTOPRENE DIAPHRAGM-TUBE
with connections



WINTERHALTER

3090305 PERISTALTIC PUMP FOR DETERGENT PRT2
flow rate: 6 L/h
pressure: 0.1 bar
santoprene hose
230V 50Hz
complete with mounting kit



3090351 SANTOPRENE DIAPHRAGM-TUBE
with connections



WINTERHALTER

3090107 RINSE AID INJECTOR 220V 50/60Hz



3090135 DIAPHRAGM FOR DOSING PUMP



WINTERHALTER

3090131 HOSE-END FITTING \varnothing 3/8"x6



WINTERHALTER

3090003 INLET VALVE FOR RINSE AID INJECTOR



WINTERHALTER

WINTERHALTER



Suitable for:

3060608 O-RING O3050 EPDM

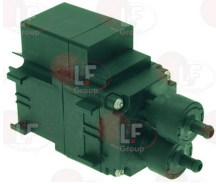


WINTERHALTER



Suitable for:

3090109 RINSE AID PUMP ELT/20
flow rate 3.2 ml - 0.1 bar
180÷260V 50/60Hz



WINTERHALTER 3102452

WINTERHALTER 5528278

Scale removers for dishwashers

5049909 SCALE REMOVER COMPACT UNIT
220/240V 50/60Hz



WINTERHALTER 83000420

Sensors

5056286 KIT THERMO SENSOR



WINTERHALTER 30000126

Springs

5034191 DOOR OPENING SPRING KIT
spring \varnothing 13,6x80 mm - wheel \varnothing 32 hole \varnothing 8 mm



WINTERHALTER 5528193

5055346 DOOR SPRING \varnothing 15x170 mm



WINTERHALTER 60003697



WINTERHALTER



Suitable for:

5062528 DOOR SPRING KIT



WINTERHALTER 60003998

Suitable for:

3250252 SPRING FOR LH DOOR UPRIGHT
for DISHWASHER GS24-GS29



WINTERHALTER 62001190

3250253 SPRING FOR RH DOOR UPRIGHT
for DISHWASHER GS24-GS29



WINTERHALTER 62001189

3250254 BUSHING \varnothing 20x14 mm
for DISHWASHER GS14-GS14E-GS15-GS15E



WINTERHALTER 62001191

3250255 SPRING BUSHING \varnothing 20x8 mm
for DISHWASHERS GS14-GS14E-GS15-GS15E-GS24-GS29



WINTERHALTER 62001433

Supports for wash and rinse arms

3743844 BOTTOM BRANCH SET



WINTERHALTER 60003518

5037405 GASKET ORM 560-30 EPDM
for DISHWASHER GS302-GS310-GS315-GS202-GS402-GS215



WINTERHALTER 2707064

WINTERHALTER 2707086

5014150 BUSHING FOR WASH ARM LOCK



WINTERHALTER 61002023

WINTERHALTER 61002022



WINTERHALTER



Suitable for:

5063277 LOWER ARM SUPPORT



WINTERHALTER 30000199

5063278 RING NUT FOR ARM SUPPORT FIXING



WINTERHALTER 60004872

5065460 LOWER ARM SUPPORT
hose-end fitting \varnothing 36 / 15 mm



WINTERHALTER 30000200

5056304 UPPER SUPPORT FOR VENTILATOR FAN \varnothing 18x65



WINTERHALTER 30000111

WINTERHALTER 60004437

5056285 LOWER ARM SUPPORT KIT



WINTERHALTER 30000112

WINTERHALTER 60000401

WINTERHALTER 60000401+60004872

WINTERHALTER 62003345

3743834 ROTATING ARM SUPPORT SET



WINTERHALTER 61006065

Suitable for:

5037405 GASKET ORM 560-30 EPDM
for DISHWASHER GS302-GS310-GS315-GS202-GS402-GS215



WINTERHALTER 2707064

WINTERHALTER 2707086

5064699 SUPPORT LOWER ARM ASSEMBLY \varnothing 18x87 mm



WINTERHALTER 60000401

WINTERHALTER 60004438

5062246 RING NUT FOR ARM SUPPORT FIXING



WINTERHALTER 60004870

5035256 LOWER WASH ARM SUPPORT



7104913 SUPPORT ARM WASH



WINTERHALTER 60002999



WINTERHALTER



Suitable for:

Suitable for:

3743843 TOP BRANCH SET

3743842 TOP WATER INLET SET



WINTERHALTER 62003406

WINTERHALTER 62003346

7102952 WASH ARM BLOCK NUT
ø 31 mm - length 32.5 mm

3743885 WASH ARM BLOCKING NUT
ø 32 mm - length 54 mm

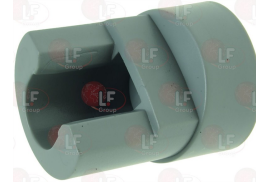


WINTERHALTER 65005484

WINTERHALTER 61005191

5025594 WASH ARM SUPPORT

5025890 WASH ARM SUPPORT ø 36x45 mm



WINTERHALTER 61002024

WINTERHALTER 61004969

7108316 WASH ARM SUPPORT ø 45 mm



WINTERHALTER 61002269

3743838 WATER FLOW COUPLING

3315042 "T"SHAPED HOSE END ø 25x14.5x14.5 mm



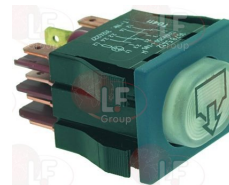
WINTERHALTER 62001157

WINTERHALTER 62001329

Switches

3319058 BIPOLAR SWITCH 250V 5A
with indicator lamp receptacle
without bulb
contact capacity 5(3)A 250V

3319184 CHANGE OVER SWITCH WHITE
contact capacity 12A 250V - with indicator light
mounting hole 30x22 mm
with screen-printing DRAIN



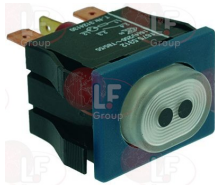
WINTERHALTER 3124097

WINTERHALTER 3124227



Suitable for:

3319004 PUSH-BUTTON UNIPOLAR 250V 16A
mounting hole 30x22 mm

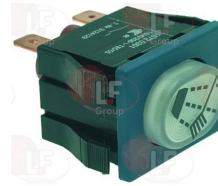


WINTERHALTER 3124075

WINTERHALTER 3124130

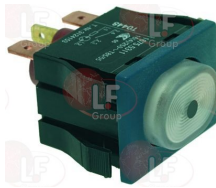
Suitable for:

3319187 PUSH-BUTTON WHITE SCREEN-PRINTED
contact capacity 16A 250V
mounting hole 30x22 mm
silk-screen printing "MANUAL RINSE"



WINTERHALTER 3124129

3319185 PUSH-BUTTON 1 POLE BRIGHT WHITE
contact capacity 16A 250V - with indicator light
mounting hole 30x22 mm



WINTERHALTER 3124153

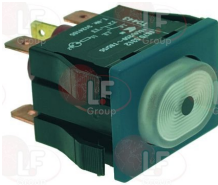
3319001 SWITCH BIPOLAR GREEN 250V 16A
with green indicator lamp 250V
mounting hole 30x22 mm
contact capacity silver 16(4)A 250V



WINTERHALTER 3124131

WINTERHALTER 3124185

3319178 SWITCH 2 POLE BRIGHT WHITE
contact capacity 16A 250V - with indicator light
mounting hole 30x22 mm - max. temperature 85°C



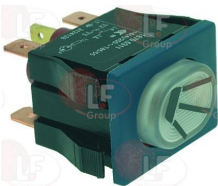
WINTERHALTER 3124165

3319179 SWITCH 2 POLE BRIGHT WHITE
contact capacity 16A 250V - with indicator light
mounting hole 30x22 mm - max. temperature 85°C



WINTERHALTER 3124166

3319180 SWITCH 2 POLE BRIGHT WHITE
contact capacity 16A 250V - with indicator light
mounting hole 30x22 mm
silk-screen printing "WASH"



WINTERHALTER 3124128

1319210 SWITCH 2-POLE WHITE 16A 250V
with indicator lamp
silk-screen print 0-1
max. temperature 120°C
mounting hole 22x30 mm



WINTERHALTER 3124034

WINTERHALTER 3124035

3319780 BLOCK CONNECTION WHITE 30x22 mm





Suitable for:

3319779 BLOCK CONNECTIONS BLACK 30x22 mm



3319783 FRAME SAFETY 4 SIDES BLACK 30x22 mm



3319007 SWITCH 250V 16A
bipolar switch NO-NC



WINTERHALTER 3124002

WINTERHALTER



Suitable for:

3319782 FRAME SAFETY 2 SIDES BLACK 30x22 mm



3319501 PUSH-BUTTON PROTECTION CAP
external dimensions 29x36 mm
for switches with mounting hole 22x30 mm



Terminals and electrical connectors

3051028 FASTON 100 PCS PACKING UNIT
made of nickel metal
flat faston 6.3 mm + 2 faston M6.3



WINTERHALTER 3112018

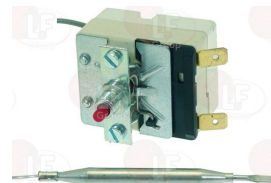
Thermostats

3444763 SINGLE-PHASE THERMOSTAT 140°C
manual reset
covered capillary 1550 mm - 16A 230V
bulb \varnothing 6x77 mm - 16A 230V



WINTERHALTER 3125023

3444717 SINGLE-PHASE THERMOSTAT 160°C
with manual reset
covered capillary 1580 mm
bulb \varnothing 6x77 mm

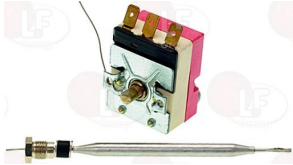


WINTERHALTER 3125030



Suitable for:

3444047 SINGLE-PHASE THERMOSTAT 30-90°C
 covered capillary 1500 mm
 bulb \varnothing 6x95 mm
 with adapter nipple gland \varnothing M9x1
 16A 250V
 D shaft \varnothing 6x4.6 mm

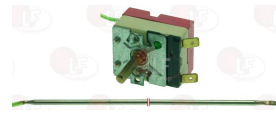


WINTERHALTER 3125010

WINTERHALTER 3125013

Suitable for:

3444113 SINGLE-PHASE THERMOSTAT 30-93°C
 capillary length 730 mm.
 bulb \varnothing 3x240 mm.
 differential temperature $\pm 4^\circ\text{C}$
 16A 250V
 D-shaft \varnothing 6x4.6 mm.



WINTERHALTER 3125046

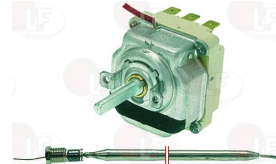
WINTERHALTER 3125047

3444764 SINGLE-PHASE THERMOSTAT 98°C
 capillary length 1840 mm
 bulb 3.1x245 mm
 16A 230V



WINTERHALTER 3125022

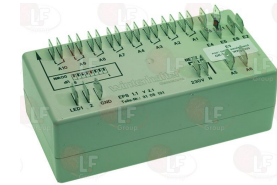
3444364 THREE-PHASE THERMOSTAT 30-90°C
 D-shaped pin \varnothing 6x4.6 mm
 covered capillary length 900 mm - 10A 400V
 bulb \varnothing 6x135 mm - with adapter nipple band M10x1



WINTERHALTER 3125011

Timers

3446047 PROGRAMMER TIMER 230V



WINTERHALTER 3105131

5025128 TIMER 230V 50/60Hz



WINTERHALTER 5528272

Tubing and hoses

7103869 DRAIN HOSE 390 mm
 external \varnothing 57 mm - internal \varnothing 49 mm



WINTERHALTER 61005530

5036110 ELBOW SHAPED HOSE 285 mm
 internal \varnothing 50 and 53 mm



WINTERHALTER 61004904

3248014 INLET HOSE
 internal \varnothing 60 mm
 overall length 310 mm



WINTERHALTER 4003027

3248015 PUMP OUTLET HOSE
 internal \varnothing 50 mm





WINTERHALTER



Suitable for:

5047656 INLET HOSE 150 mm
ø int. 25 mm - ø ext. 33 mm



WINTERHALTER 61005703

Suitable for:

3248216 OUTLET HOSE 100 mm
external ø 54/40 mm - internal ø 45/32



WINTERHALTER 60004591

Wash and rinse arms for warewashers

5021478 CAP FOR BOTTOM WASH ARM



WINTERHALTER 65002080

3250063 LOCKING SPRING FOR ARM
for all models



WINTERHALTER 2804041

3186196 GASKET ORM 0180-15 EPDM
for all models



WINTERHALTER 2707039

3743837 MIDDLE WASH ARM ø 52x415 mm



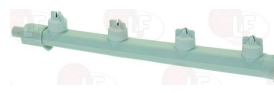
WINTERHALTER 62001154

3743835 TOP WASH ARM 410 mm



WINTERHALTER 62001172

3743836 BOTTOM WASH ARM 336 mm



WINTERHALTER 62001150

Suitable for: **5004580 NUT FOR WASH ARM FITTING 1"1/4 thread 1"1/4** Suitable for: **5062985 RING NUT FOR WASH ARM ASSEMBLY ø 49 mm**



WINTERHALTER 3501004



WINTERHALTER 60002652

3743839 RING SPANNER



WINTERHALTER 60003376

5024036 RINSE ARM ASSEMBLY 498 mm



WINTERHALTER 60003515

WINTERHALTER 60003821

5027151 RINSE ARM 560 mm



WINTERHALTER 65005499

3743649 RINSE ARM 580 mm



WINTERHALTER 61005052

5017099 GASKET ø 32x26x5 mm



WINTERHALTER 61005781

WINTERHALTER 70009122

3743831 WASH ARM



WINTERHALTER 60001846

5048157 WASH ARM ASSEMBLY
external dimensions 515x185 mm



WINTERHALTER 30002770

WINTERHALTER 60004427

3743323 WASH ARM ASSEMBLY 520 mm



WINTERHALTER 60003520

5043682 WASH ARM COMPLETE 580 mm
for DISHWASHER WINTERHALTER GS502



WINTERHALTER 61005611



WINTERHALTER



Suitable for:

5034011 WASH ARM END PIECE 31.50x152 mm
for DISHWASHER GS302-GS310-GS315-GS215



WINTERHALTER 60003802

Suitable for:

5047100 WASH ARM LOCK SUPPORT



WINTERHALTER 61002391

3250064 WASH ARM SPRING



WINTERHALTER 2804042

3186189 GASKET ORM 0270-40 EPDM
for all models



WINTERHALTER 2707016

5025593 WASH ARM SUPPORT 3/4"
ø 38 mm



WINTERHALTER 61004060

5005201 WASH ARM WITH NOZZLES 355 mm



WINTERHALTER 5507056

3186189 GASKET ORM 0270-40 EPDM
for all models



WINTERHALTER 2707016

3250055 LOCKING SPRING FOR WASH ARM
for all models



WINTERHALTER 2804040

3743840 WASH ARM 385x128 mm



WINTERHALTER 62003539

3743841 WASH ARM CAP 128 mm



WINTERHALTER 62003538



Suitable for:

Suitable for:

3743303 WASH ARM 460x152 mm



WINTERHALTER 60003803

3743305 WASH ARM 470 mm



WINTERHALTER 62001807

3743307 LOCKING NUT



WINTERHALTER 61004059

5062527 WASH ARM 470 mm



WINTERHALTER 30002021

WINTERHALTER 70005762

3743306 WASH ARM 540 mm



WINTERHALTER 61000945

3743832 WASH ARM 545 mm TOP



WINTERHALTER 61002557

3743302 CLOSING CAP FOR WASH ARM



WINTERHALTER 3501210

3743566 WASH ARM 538 mm



WINTERHALTER 61002795

3743833 SLANTED END COUPLING 117mm



WINTERHALTER 61002084



WINTERHALTER



Suitable for:

3743538 WASH ARM 595 mm

Suitable for:

7102951 WASH ARM 648 mm



WINTERHALTER 3501196

WINTERHALTER 5005244

WINTERHALTER 61001965

WINTERHALTER 65004997

Wash jets and accessories

3501107 CROOS-SHAPED JET NUT



WINTERHALTER 62001808

WINTERHALTER 620018084

3501070 CROSS-SHAPED NOZZLE



WINTERHALTER 62001809

WINTERHALTER 620018094

3501254 JET \varnothing 20.5x16.56 mm



WINTERHALTER 65003150

3501083 CROSS-SHAPED JET
 \varnothing 18 mm



WINTERHALTER 62001153

WINTERHALTER 620011534

3501084 CURVED FITTING RINSE JET



WINTERHALTER 62001176

WINTERHALTER 620011764

3501252 BENT COUPLING FOR JET



WINTERHALTER 60001810

3501082 JET
 \varnothing 21 mm.



WINTERHALTER 2910514



Suitable for:

Suitable for:

3501088 NUT FOR JETS



WINTERHALTER 62001174

WINTERHALTER 620011744

3501089 RINSE JET CROSS-SHAPED
ø thread 21 mm



WINTERHALTER 2910515

3501101 RINSE JET



WINTERHALTER 62001173

WINTERHALTER 620011734

3501102 RINSE SPIRAL INSERT



WINTERHALTER 2910307

WINTERHALTER 62002755

WINTERHALTER 65002755

3501141 RINSE CAP LOW TYPE



WINTERHALTER 65002754

3501102 RINSE SPIRAL INSERT



WINTERHALTER 2910307

WINTERHALTER 62002755

WINTERHALTER 65002755

3501012 RINSE JET CAP



WINTERHALTER 2910201

WINTERHALTER 2910231

WINTERHALTER 65002765

WINTERHALTER 650027654

3501013 RINSE JET BASE



WINTERHALTER 5510008

3501014 RINSE SPINDLE



WINTERHALTER 2910200

WINTERHALTER 2910230

WINTERHALTER 65002764

WINTERHALTER 650027644

3501106 RINSE JET NUT



WINTERHALTER 62002812

3501104 PLASTIC RINSE JET



WINTERHALTER 62002811

WINTERHALTER 62002820



WINTERHALTER



Suitable for:

Suitable for:

3501103 STAINLESS STEEL RINSE JET \varnothing 8 mm

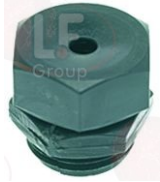
3501010 WASH JET



WINTERHALTER 2910312

WINTERHALTER 2910520

3501011 WASH JET



WINTERHALTER 2910527

3743537 WASH JET CAP

3501243 WASH JET



WINTERHALTER W12910532

WINTERHALTER 2910532

WINTERHALTER 2910509

3501067 WASH JET COMPLETE WITH SPIRAL

3501253 WASH JET 20.5x14 mm



WINTERHALTER 2910505

WINTERHALTER 60002465

WINTERHALTER 61003031

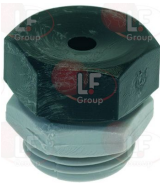
WINTERHALTER 70003003

WINTERHALTER 610030324

WINTERHALTER 62002465

5021289 WASH NOZZLE - GRAY/BLACK
thread \varnothing 1/2" - hole 5 mm

3501258 WASHING NOZZLE WHITE/BLACK 1/2"
 \varnothing hole 7 mm



WINTERHALTER 2910522

WINTERHALTER 2910538

Water purification filters

7102821 PREFILTER ROMATIK XS

5039523 REPLACING KIT FOR OSMOSIS FILTER



WINTERHALTER 30000591

WINTERHALTER 5101446



Suitable for:

Suitable for:

Watertight seals and rings

5062247 SEALING RING \varnothing 52.2x48.4x1.6 mm



















WINTERHALTER 60004430

The data herewith contained may change without notice and LF SpA cannot be held responsible for possible errors stated or resulting by the use of this document. All rights reserved. No part of this publication may be reproduced without written permission by LF SpA.



Distributing Components, Spare Parts & Accessories in original quality worldwide

-
-  **LF SpA HEADQUARTERS**
via Voltri, 80 - 47522 Cesena (FC) ITALY
Tel. +39 0547 34 11 11 - Fax +39 0547 34 11 10
www.lfrcambi724.it - www.lfrcambi724.mobi
info@lfrcambi.it
Export Dept.: Tel. +39 0547 34 11 50 - Fax: +39 0547 34 11 55
www.lfspareparts724.com - www.lfspareparts724.mobi
export@lfspareparts.com
 -  **LF SpA HOUSEHOLD COMPONENTS DIVISION**
Via Padriciano, 34149 Trieste - Italia - AREA Science Park
Tel. +39 0547 34 12 42 - Fax +39 0547 34 12 48
www.lfspareparts724.com - www.lfspareparts724.mobi
info@lfspareparts.com
 -  **EPGC Sas FRANCE**
13, Rue des Forts - 59960 Neuville en Ferrain
Tel. +33 (0)3 20 25 06 21
Fax +33 (0)3 20 25 34 12
www.epgc.com
www.epgc724.mobi
epgc@epgc.com
 -  **LF GmbH GERMANY**
Junkersstrasse, 3 - D-82178 Puchheim - München
Tel. +49 89 89 45 78 66
Fax +49 89 89 45 78 88
www.lfersatzteile724.de
www.lfersatzteile724.mobi
info@lfersatzteile.de
 -  **LF China REPUBLIC OF CHINA**
Room 403, No.2, Huadu Mansion, Lane 422, Huanghua Rd.
Minhang Dist. - 201103 Shanghai
Tel. +86 (0)21 33 53 66 31
Fax +86 (0)21 33 53 66 32
www.lfspareparts724.com
www.lfspareparts724.mobi
china@lfspareparts.com
 -  **OOO LF RUSSIAN FEDERATION**
Ul. Anatoliya Zhivova, 8 - office 1 - 123100 Moscow
Tel./Fax +7 495 725 26 53
www.lfspareparts724.ru
www.lfspareparts724.mobi
info@lfspareparts.ru
 -  **LF Repuestos Horeca S.L.U. SPAIN**
Poligono Industrial Carpetania - C/Miguel Faraday, 8 - 28906 Getafe
Tel. +34 91 477 91 00
Fax +34 91 477 90 81
www.lfrepuestos-horeca724.es
www.lfrepuestos724.mobi
info@lfrepuestos.es
 -  **LF SpA Cesena (IT) Swiss Branch Steinhausen SWITZERLAND**
Sennweidstrasse, 45 - CH-6312 Steinhausen
Tel. +41 (0)41 760 15 80-1
Fax +41 (0)41 760 15 85
www.lfersatzteile724.ch
www.lfersatzteile724.mobi
info@lfersatzteile.ch
 -  **LF Spare Parts Ltd. UNITED KINGDOM**
A10a Lakeside Business Park, Broadway Lane
South Cerney, Gloucestershire GL7 5XL
Tel. +44 (0)1285 86 16 25
Fax +44 (0)1285 86 39 49
www.lfspareparts724.co.uk
www.lfspareparts724.mobi
info@lfspareparts.co.uk
 -  **AUSTRALIA AND NEW ZEALAND**
www.lfspareparts724.com
andrea.calvio@lfspareparts.com
 -  **AUSTRIA**
www.lfersatzteile724.at
info@lfersatzteile.at
 -  **BALKAN COUNTRIES**
www.lfspareparts724.com
matijaramov@lfspareparts.com
 -  **BALTIC COUNTRIES**
www.lfspareparts724.com
inara.silina@lfspareparts.com
 -  **CENTRAL AND EASTERN EUROPE**
www.lfspareparts724.cz
jiri.kremla@lfspareparts.cz
 -  **DENMARK**
www.lfspareparts724.dk
michael.leth@lfspareparts.com
 -  **JAPAN**
www.lfspareparts724.jp
hiroshi.ukai@lfspareparts.jp
 -  **SOUTH KOREA**
www.lfspareparts724.com
fabio.doni@lfspareparts.com
 -  **TURKEY**
www.lfyedekparca724.com
basar.ergun@lfyedekparca.com
 -  **USA AND CANADA**
www.lfspareparts724.us
sauro.dallaglio@lfspareparts.us
howard.truitt@lfspareparts.us