



Spare parts for:

Warewashing equipment



Suitable for:

ANGELO PO



This catalogue is automatically generated.
Therefore, the sequence of the items might
not be always shown at best.

Updates will be issued in case of additions
and/or amendments.

Suitable universal spare parts may not be included





Suitable for:

ANGELO PO



Suitable for:

Air traps

- 3060041 AIR CHAMBER**
ext. dims. 46x130 mm - hose end fitting \varnothing 6 mm
fastening area 46x32.5 mm
for Dishwasher (ANGELO PO) F60P - F60PR - F60T
F80P - F80PR - L45



ANGELO PO 33M0220

- 3186267 GASKET FLAT EPDM 46.5x33x2 mm**
central hole \varnothing 20 mm - for air trap
for Dishwasher (ANGELO PO) F60P - F60PR - F80P
F80PR - L45



ANGELO PO 3151770

- 3060052 PLATE FOR AIR CHAMBER**
dimensions 46x32.5 mm



ANGELO PO 35Z0050

- 3060006 AIR CHAMBER \varnothing 36x131 mm**
hose end fitting \varnothing 6 mm - threaded fitting \varnothing 1/4"
for Dishwasher (ANGELO PO) L40 - L40S - L60
for Dishwasher hood type (ANGELO PO) L100 - L80



ANGELO PO 33D0360

- 3060053 NUT BRASS \varnothing 1/4"**



ANGELO PO 3117580

- 1186356 O-RING 03075 EPDM**
for Dishwasher (ANGELO PO) L40 - L40S - L60
for Dishwasher hood type (ANGELO PO) L100 - L80



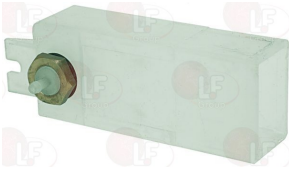
ANGELO PO 3150410

Suitable for:

Suitable for:

3060086 AIR CHAMBER COMPLETE 53x38x130 mm
 hose end fitting \varnothing 6 mm
 complete with flat gasket and fastening nut
 for Dishwasher hood type (ANGELO PO) LC100 - LC130
 LC80
 for Dishwasher pull-through (ANGELO PO) C207
 C304

3060087 BRASS NUT \varnothing 3/8"



ANGELO PO 33D1390

ANGELO PO 33Q2190

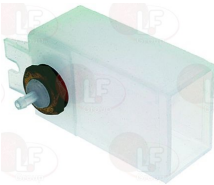
3186438 FLAT EPDM GASKET \varnothing 25x16.5x2 mm
 for air chamber



ANGELO PO 3151890

3060027 AIR CHAMBER COMPLETE 53x38x90 mm
 hose end fitting \varnothing 6 mm
 complete with flat gasket and fastening nut

3060087 BRASS NUT \varnothing 3/8"



ANGELO PO

ANGELO PO 33Q2190

3186438 FLAT EPDM GASKET \varnothing 25x16.5x2 mm
 for air chamber



ANGELO PO 3151890

3060065 AIR CHAMBER 55x31x56 mm
 hose end fitting \varnothing 6 mm

3060070 GASKET 14x8x1.5 mm



ANGELO PO 33D3330

ANGELO PO 37Q5130



Suitable for:

3060069 **HEXAGONAL NUT M8 MEDIUM**
stainless steel - UNI 5588 - DIN 934 - ISO 4032



ANGELO PO 3110050

ANGELO PO 33Q6470

ANGELO PO



Suitable for:

3060066 **AIR CHAMBER 55x31x65 mm**
hose end fitting \varnothing 6 mm



ANGELO PO 33D3320

3060070 **GASKET 14x8x1.5 mm**



ANGELO PO 37Q5130

3060069 **HEXAGONAL NUT M8 MEDIUM**
stainless steel - UNI 5588 - DIN 934 - ISO 4032



ANGELO PO 3110050

ANGELO PO 33Q6470

3060029 **AIR CHAMBER 84x28x80 mm**
hose end fitting \varnothing 6 mm
complete with silicone O-ring gasket (1186611)
complete with two nylon gaskets (5007864)
for Glasswasher/Cupwasher (ANGELO PO)
LT10R - LT20F - LT25F



ANGELO PO 33D0410

1186611 **O-RING 02025 RED SILICONE**



ANGELO PO 3150550

Axial motors

3240501 **AXIAL FAN SUNON 120x120x38 mm**
ball bearings
230V 50/60Hz 22W 2850rpm
DP200A 2123XBT.GN



ANGELO PO 32M7130

ANGELO PO 32V5790

3240503 **AXIAL VENTILATOR SUNON 92x92x25 mm**
ball bearings
230V 50/60Hz 14,5W 2350rpm
SF23092A 2092HBT.GN



ANGELO PO 3113740

ANGELO PO 3205930



Ball valves and accessories

- 3526693 WATER VALVE \varnothing 1"MF**
 ball valve
 heavy series with PN 25 total passage
 aluminium lever



ANGELO PO 33D0890

ANGELO PO 33D1740

Bearings

- 1063912 BEARING 6201 ZZ NSK**
 external \varnothing 32mm - internal \varnothing 12mm - thickness 10mm



ANGELO PO 36G7510

- 3063122 BEARING 6204 2RSH SKF**
 external \varnothing 47mm - internal \varnothing 20mm - thickness 14mm



ANGELO PO 3103840

Boilers

- 3024072 BOILER \varnothing 110x370 mm**



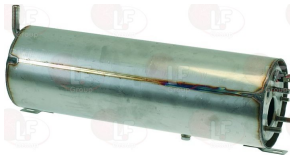
ANGELO PO 3023900

- 3024041 BOILER \varnothing 112x320 mm**
 for Dishwasher (ANGELO PO) KD37 - KN37



ANGELO PO 3022510

- 3024020 BOILER \varnothing 130x400 mm**
 for Dishwasher (ANGELO PO) LF50 - LF50E - LF50EM



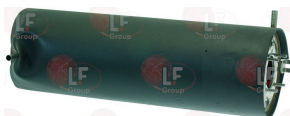
ANGELO PO 34A1950

- 3024022 BOILER \varnothing 138x285 mm**
 for Glasswasher/Cupwasher (ANGELO PO) LT10R
 LT20F - LT25F



ANGELO PO 34A0700

- 3024036 COMPLETE BOILER \varnothing 160x505 mm**



ANGELO PO 34A2560



Suitable for:

Suitable for:



Bulb sheathes

3187006 THERMOSTAT SHEATHING \varnothing 1/2"
bulb length 130 mm



ANGELO PO 30Q1070

Bushings

3743048 RINSE IMPELLER BUSH
 \varnothing internal 10 mm



ANGELO PO 36G8460

Capacitors, electrical

3068087 CAPACITOR ELECTRICAL 35 μ F
450V 50/60Hz - \varnothing 45xh91 mm



ANGELO PO 32V5980

Clamps

3449453 HOSE CLAMP 25-40
for pipes \varnothing 25÷40 mm
made of stainless steel AISI 304
height 9 mm and screw E7
suitable for food industry



ANGELO PO 3140220

3449470 HOSE CLAMP 32-50
for pipes \varnothing 32÷50 mm
made of stainless steel AISI 304
height 12 mm and screw E7
suitable for food industry



ANGELO PO 3140300



Contact thermostats

3444283 CONTACT THERMOSTAT +110°C
boiler security
with manual reset - 10A 250V



ANGELO PO 32V7250

3444607 CONTACT THERMOSTAT 110°C
with manual reset



ANGELO PO 32Z8270

3445403 CONTACT THERMOSTAT 55°C
with automatic reset



ANGELO PO 32V1920

Contactors

3446562 CONTACTOR LOVATO BF0901A
coil 9A 230V 50/60Hz 4.2Kw
3 normally open contacts
1 normally closed auxiliary contact



ANGELO PO 3100940

ANGELO PO 32V5290

3446557 CONTACTOR LOVATO BG0901A
coil 9A 230V 50/60Hz 4Kw
3 normally open contacts
1 normally closed auxiliary contact



ANGELO PO 32V6550

3446556 CONTACTOR LOVATO BG0910A
coil 9A 230V 50/60Hz 4Kw
3 normally open contacts
1 normally open auxiliary contact



ANGELO PO 32V1880

3351012 CONTACTOR SIEMENS 3TG1001-1AL2
16A 230V 50/60Hz
contacts:3 NO + 1 NC



ANGELO PO 32Z4471

3351092 THERMAL RELAY LOVATO 2.5/4A 230V



ANGELO PO 32Z0950



Suitable for:

ANGELO PO



Suitable for:

Controllers and changeover switches

3322022 CONTROLLER D94.44 4 CAMS
 240 seconds cycle
 220/240V 50/60Hz
 anticlockwise rotation
 D-shaped pin \varnothing 6x4.6 mm
 for Dishwasher (ANGELO PO) L35 - L35S



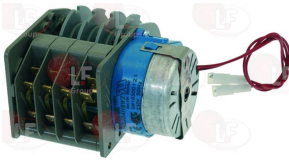
ANGELO PO 3222331

3322114 CONTROLLER P255 4 CAMS
 1st cycle 180 seconds
 2nd cycle 6 seconds
 230V 50/60Hz
 for Dishwasher (ANGELO PO) LF50



ANGELO PO 32V2060

3446207 CONTROLLER P255 4 CAMS
 360 seconds cycle
 230V 50/60Hz
 for Dishwasher (ANGELO PO) KD100 - KD100A - KD130
 KD130A



ANGELO PO 32V7300

3322163 CONTROLLER P255 5 CAMS
 1st cycle 108 seconds
 2nd cycle 360 seconds
 230V 50/60Hz
 for Dishwasher (ANGELO PO) F60P - F60PR - F60T
 L45



ANGELO PO 32Z8100

3322164 CONTROLLER P255 5 CAMS
 1st cycle 60 seconds
 2nd cycle 270 seconds
 230V 50/60Hz
 for Dishwasher hood type (ANGELO PO) LC130



ANGELO PO 32V1940

3322165 CONTROLLER P255 5 CAMS
 1st cycle 85 seconds
 2nd cycle 120 seconds
 3rd cycle 245 seconds
 230V 50/60Hz
 for Dishwasher hood type (ANGELO PO) LC100 - LC80



ANGELO PO 32V1930

3322220 CONTROLLER P255 5 CAMS
 1st cycle 120 seconds
 2nd cycle 360 seconds
 230V 50/60Hz
 for Dishwasher (ANGELO PO) L40 - L60



ANGELO PO 32Z2020

3322221 CONTROLLER P255 5 CAMS
 1st cycle 300 seconds
 2nd cycle 80 seconds
 230V 50/60Hz
 for Dishwasher hood type (ANGELO PO) L80



ANGELO PO 32Z8110

Suitable for:

3322222 CONTROLLER P255 5 CAMS
 1st cycle 180 seconds
 2nd cycle 54 seconds
 230V 50/60Hz
 for Dishwasher hood type (ANGELO PO) L100



ANGELO PO 32Z8430

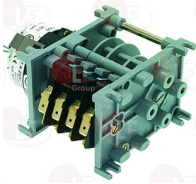
Suitable for:

3322291 CONTROLLER P375 3 CAMS
 120 seconds cycle
 230V 50/60Hz



ANGELO PO 32Z5720

3322060 CONTROLLER 4904F3 4 CAMS
 60 seconds cycle
 rinse 15 seconds
 230V 50/60Hz
 anticlockwise rotation
 without pin
 for Dishwasher hood type (ANGELO PO) L100 - L80



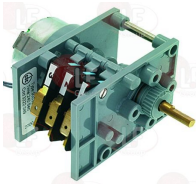
ANGELO PO 32Z0780

3322195 CONTROLLER 600/627/5261 2 CAMS
 120 seconds cycle
 230V 50/60Hz



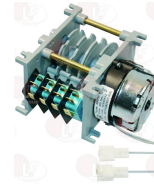
ANGELO PO 3030290

3322049 CONTROLLER 9003F1 3 CAMS
 240 seconds cycle
 rinse 15 seconds
 230V 50/60Hz
 anticlockwise rotation
 D-shaped pin $\varnothing 6 \times 4.6$ mm
 for Dishwasher (ANGELO PO) L40 - L40S - L60



ANGELO PO 32Z4760

5018216 TIMER 4903F3 4 CAMS
 5'-230V 50/60Hz cycle



ANGELO PO 32V7290

Curtains

3443417 INNER CURTAIN 640x410 mm



ANGELO PO 36Z0720



Suitable for:

ANGELO PO



Suitable for:

Door catches

3398005 DOOR CATCH
for Dishwasher (ANGELO PO) L35 - L35S - L40 - L40S
L60



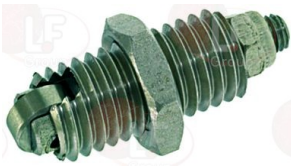
ANGELO PO 36M0020

3398006 DOOR RETAINER
for Dishwasher (ANGELO PO) L35 - L35S - L40 - L40S
L60



ANGELO PO 36M0030

3398016 DOOR CATCH
for Dishwasher (ANGELO PO) F60P - F60PR - F60T
F80P - F80PR - LF50 - L45



ANGELO PO 31W0061

3398036 DOOR CATCH WITH MICROSWITCH



ANGELO PO 3030100

3398030 GREEN DOOR CATCH
for DISHWASHER all models



ANGELO PO 32W1300

Door gaskets for dishwashers

3186176 DOOR GASKET 445 mm
profile dimensions 28x6 mm



ANGELO PO 37Q3910

Drain assembly

3316034 COMPLETE DRAIN ASSEMBLY \varnothing 1"
connection \varnothing 1"



ANGELO PO 33D2440

ANGELO PO 33D3140

Drain assembly

3316030 OVERFLOW DRAIN ASSEMBLY \varnothing 1"1/2
for Dishwasher (ANGELO PO) L40 - L40S - L60
for Dishwasher hood type (ANGELO PO) L100 - L80



ANGELO PO 33Q3050

3061032 GASKET ELBOW \varnothing 1"1/2
external \varnothing 50 mm - internal \varnothing 36 mm - thickness 4 mm



ANGELO PO 37Q1510

3061033 OUTLET ELBOW RING NUT \varnothing 1"1/2 mm



ANGELO PO 33Q2320

Drain hoses

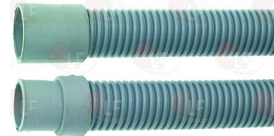
3450026 DRAIN PIPE \varnothing 28x1500 mm
elbow sleeve internal \varnothing 28 mm external \varnothing 33 mm
straight sleeve internal \varnothing 24 mm external \varnothing 28 mm
max temperature 90°C



ANGELO PO 3300290

ANGELO PO 3300420

3450028 DRAIN PIPE \varnothing 29x1500 mm
muffs internal \varnothing 24 and 28 mm
max temperature 90°C



ANGELO PO 33M1660

3450120 DRAIN PIPE \varnothing 38x1500 mm
elbow sleeve internal \varnothing 42 mm
straight sleeve internal \varnothing 31 mm



ANGELO PO 3029590

ANGELO PO 33Q4200

Drain plugs

3448166 OVERFLOW PIPE \varnothing 27x120 mm
made of plastic
for Glasswasher/Cupwasher (ANGELO PO) LT10R
LT20F - LT25F



ANGELO PO 33D0390



Suitable for:

ANGELO PO



Suitable for:

Drain plugs

3448137 OVERFLOW PIPE \varnothing 28x106 mm
in plastic



ANGELO PO 3018870

3316041 GASKET 1" \varnothing 44x32x3 mm



ANGELO PO 3030160

3448165 OVERFLOW PIPE \varnothing 28x220 mm
plastic
for Dishwasher (ANGELO PO) F60P - F60PR - F80PR
L45



ANGELO PO 33D0130
ANGELO PO 33D3120

ANGELO PO 33D0140

ANGELO PO 33D2640

3316040 ELBOW CONNECTOR \varnothing 1"x30 mm



ANGELO PO 3030150

3316042 STAINLESS STEEL NUT \varnothing 1"



ANGELO PO 3030170

3186143 GASKET OR 04093 EPDM



ANGELO PO 3150520

3448139 OVERFLOW PIPE \varnothing 28x96 mm
in plastic



ANGELO PO 3081150

3316041 GASKET 1" \varnothing 44x32x3 mm



ANGELO PO 3030160

3316040 ELBOW CONNECTOR \varnothing 1"x30 mm



ANGELO PO 3030150

3316042 STAINLESS STEEL NUT \varnothing 1"



ANGELO PO 3030170



Suitable for:

Suitable for:

3448261 OVERFLOW PIPE \varnothing 31x116 mm
plastic made



ANGELO PO 33D3080

3186143 GASKET OR 04093 EPDM



ANGELO PO 3150520

3448176 OVERFLOW PIPE \varnothing 35x245 mm
out of plastic



ANGELO PO 33D2320

3160198 ING NUT FOR INLET BOSS \varnothing 1"1/4



ANGELO PO 33Q2160

3448168 OVERFLOW PIPE \varnothing 40x187 mm
made of plastic



ANGELO PO 33D3350

1186630 GASKET OR 04087 EPDM



ANGELO PO 3152690

3160198 ING NUT FOR INLET BOSS \varnothing 1"1/4



ANGELO PO 33Q2160

3316101 DRAIN ASSEMBLY CONNECTION \varnothing 1"1/4
internal hole \varnothing 35 mm - height 60 mm
for Dishwasher (ANGELO PO) LF50
for Dishwasher hood type (ANGELO PO) LC100 - LC130
LC80



ANGELO PO 33D3090

ANGELO PO 33Q2290

ANGELO PO 33Q4740

3186238 O-RING 0146 EPDM



ANGELO PO 3151930

3186231 LIP GASKET DEM40 EPDM
 \varnothing 40x30x7 mm



ANGELO PO 37Q5140



Suitable for:

3448207 OVERFLOW PIPE \varnothing 40x210 mm
in plastic
for Dishwasher (ANGELO PO) KD60 - KD60E - KD60M
KD60MA - KD60ME - KD85 - KD85A - KD85E
for Dishwasher hood type (ANGELO PO) KD100
KD100A
for Pan/utensilwashing machines (ANGELO PO) LP151



ANGELO PO 33D3360

Suitable for:

3186231 LIP GASKET DEM40 EPDM
 \varnothing 40x30x7 mm



ANGELO PO 37Q5140

3448231 OVERFLOW PIPE \varnothing 40x400 mm



ANGELO PO 3056130

3186231 LIP GASKET DEM40 EPDM
 \varnothing 40x30x7 mm



ANGELO PO 37Q5140

3448115 OVERFLOW PIPE \varnothing 42x431 mm
in chrome plated brass
for Dishwasher hood type (ANGELO PO) L100 - L80



ANGELO PO 33D0050

1186655 O-RING 04131 EPDM
for Dishwasher hood type (ANGELO PO)
L100 - L80



ANGELO PO 3150260

5017671 OVERFLOW PIPE END \varnothing 40x52 mm
interno \varnothing 32 mm
for Pan/utensilwashing machines (ANGELO PO) LPG300
LP202 - LP202HC - LP302 - LP302HC



ANGELO PO 33D3300

Drain pumps

3122331 DRAIN PUMP 100W 230V 50Hz
inlet external \varnothing 30 mm - outlet external \varnothing 22 mm
for Dishwasher (ANGELO PO) F60T - F80P



ANGELO PO 32M5220



Electronic controllers

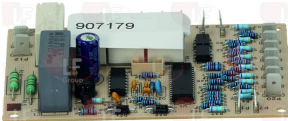
- 3441065 DIGITAL THERMOMETER TM103T N4 -40+100°C**
 power supply 24V
 mounting hole 60x25 mm



ANGELO PO 32Z8250

Electronic printed-circuit boards

- 5051726 BOARD FOR TIMER TRONIC STANDARDISED**
 dimensions 122x80 mm

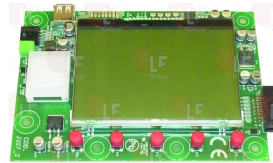


ANGELO PO 3026600

ANGELO PO 3114850

ANGELO PO 3207870

- 5059269 KEYBOARD WITH DISPLAY VERSION 09**
 size 158x112 mm



ANGELO PO 3227940

Faucets and mixers

- 3359215 SINGLE-HOLE PUSH-OUT SHOWER**
 mounting hole \varnothing 55 mm
 connecting hoses \varnothing 12 mm
 hoses length 1475 mm



ANGELO PO DE

Feet

- 3313119 ADJUSTABLE FOOT**



ANGELO PO 3095690

Filters

- 3349595 INLET COUPLING**



ANGELO PO 33Q4290



Suitable for:

ANGELO PO



Suitable for:

Filters

3349604 INLET COUPLING 1000-1300



ANGELO PO 33Q4210

1186643 GASKET OR 04212 EPDM



ANGELO PO 3152390

3160488 INLET FILTER 161x80 H77 mm



ANGELO PO 30Q1330

**3160237 INLET FITTING
complete with gasket**



ANGELO PO
ANGELO PO 37Q4190

ANGELO PO 3095440

ANGELO PO 33Q4180

**3160220 STAINLESS STEEL FILTER \varnothing 75x55 mm
for Dishwasher (ANGELO PO) F60P-L45 - L45**



ANGELO PO 30Q0300

ANGELO PO 30Q1510

3160462 WATER FILTER \varnothing 1/2"FF



ANGELO PO 35Q2780

3160118 WATER FILTER \varnothing 185 mm



ANGELO PO 35Q6020

3160007 WATER FILTER \varnothing 3/4"FF

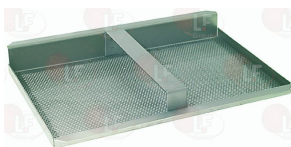


ANGELO PO 33Q6090

ANGELO PO 33Q6091

ANGELO PO 35Q2790

**3160131 WATER FILTER 295x195 mm
for Dishwasher hood type (ANGELO PO) L100 - L80**



ANGELO PO 30G0140



Fittings

3349353 ELBOW FITTING 1/4"M \varnothing 8/6 NICKEL



ANGELO PO 3016150

3349352 ELBOW FITTING 1/8"M \varnothing 8/6 NICKEL



ANGELO PO 3014470

3349041 FITTING F1/2" \varnothing 14



ANGELO PO 3300740

1349713 NICHEL PLATED L-FITTING \varnothing 1/4"F-1/4"F



ANGELO PO 3304360

3349342 NICHEL-PL.HOSE-END FITTING \varnothing 1/4"M \varnothing 7



ANGELO PO 3007980

3349355 NICHEL-PL.T-FITTING \varnothing 1/8"F-1/8"F-1/8"F



ANGELO PO 3003770

3349320 NICHEL-PLATED FITTING \varnothing 1/2"M-1/2"M



ANGELO PO 3071310

3349330 NICHEL-PLATED FITTING \varnothing 1/4"M-1/8"



ANGELO PO 3040920

3349318 NICHEL-PLATED FITTING \varnothing 1/8"M-1/8"M



ANGELO PO 3005480

3349040 1/2" MF REDUCER
thread \varnothing 21 mm
for Dishwasher (ANGELO PO) L40 - L40S - L60



ANGELO PO 3305190



Suitable for:

ANGELO PO



Suitable for:

Fuses

3049073 QUICK ACTING FUSE \varnothing 10x38 mm - 10 PCS
500V 10A



ANGELO PO 32V6210

3049043 QUICK ACTING FUSE \varnothing 5x20 mm - 10 PCS
250V 500mA



ANGELO PO 3201540

3049046 QUICK ACTING FUSE \varnothing 5x20 mm - 10 PCS
250V 1A



ANGELO PO 3200020

Gaskets and seals

3786704 GASKET FOR WASH HOSE
 \varnothing 51x34x15 mm
for Dishwasher (ANGELO PO) KD100 - KD100A - KD130
KD130A - KD130E - KD130EAT



ANGELO PO 3081380

Gears

5017043 PINION P70 Z5
hole for shaft \varnothing 30 mm



ANGELO PO 3006900

3243847 REDUCER FOR CONVEYOR SUPPORT



ANGELO PO 36G7540

Guides

3189042 SLIDEWAY FOR HOOD LH 650x25 mm



ANGELO PO 3036440

3189041 SLIDEWAY FOR HOOD RH
sizes 695x25 mm



ANGELO PO 3036430



Handles

3242374 COMPLETE HANDLE
for 1000-1300-1300S



ANGELO PO 36M6190

3399009 DOOR HANDLE INSERT



ANGELO PO 37M7200

3242027 SHACKLE SCREW
thread \varnothing 6 mm
for Dishwasher hood type (ANGELO PO) L100 - L80



ANGELO PO 3100100

3242026 SHACKLE SCREW BUSHING
 \varnothing 12 x 23 mm
for Dishwasher hood type (ANGELO PO) L100 - L80



ANGELO PO 35Z0770

Heating elements

3755060 COVER FOR HEATING ELEMENT / PLASTIC
for heating elements with flange \varnothing 72 mm
 \varnothing 61 mm - height 53.5 mm
distance between fastening holes 68.5 mm



ANGELO PO 3150320

ANGELO PO 3150321

5015994 COVER FOR HEATING ELEMENT / PLASTIC
 \varnothing 130 mm - height 40 mm
for Dishwasher (ANGELO PO) KD85
for Dishwasher hood type (ANGELO PO) KD100 - KD130
for Pan/utensilwashing machines (ANGELO PO) LP151
LP202 - LP302



ANGELO PO 35E8870

3355175 HEATING ELEMENT BOILER 2500W 220V
immersed depth 210 mm
flange external \varnothing 63 mm
with bulbholder sheathing
complete with gasket OR \varnothing 58 mm (3186013)



ANGELO PO 32G0540

3755036 HEATING ELEMENT BOILER 2800W 230V
immersed depth 300 mm
flange external \varnothing 55 mm
with bulbholder sheathing \varnothing 7 mm
complete with gasket OR \varnothing 48 mm (3186001)



ANGELO PO 3030200



Suitable for:

ANGELO PO



Suitable for:

3355477 HEATING ELEMENT BOILER 3000W 220/380V

immersed depth 265 mm
flange external \varnothing 63 mm
with bulbholder sheathing \varnothing 6 mm
complete with gasket OR \varnothing 58 mm (3186013)



ANGELO PO 32G3380

3355104 HEATING ELEMENT BOILER 3000W 230/380V
immersed depth 325 mm
flange external \varnothing 72 mm - with bulbholder sheathin
complete with gasket OR \varnothing 67 mm (3186014)
for Dishwasher (ANGELO PO) FL34



ANGELO PO 32G0220

3186014 O-RING GASKET 06225 EPDM \varnothing 67 mm



ANGELO PO 3150430

ANGELO PO 3151960

ANGELO PO 37Q5260

5029267 HEATING ELEMENT BOILER 3500W 230V
immersed depth 365 mm
flange external \varnothing 55 mm
complete with gasket OR \varnothing 48 mm (3186001)
for Dishwasher (ANGELO PO) LF50EM



ANGELO PO 3075840

3355459 HEATING ELEMENT BOILER 4500W 230V
immersed depth 365 mm
flange external \varnothing 55 mm
complete with gasket OR \varnothing 48 mm (3186001)
for Dishwasher (ANGELO PO)
LF50
for Dishwasher (ANGELO PO)
LF50



ANGELO PO 32G2140

3186001 O-RING GASKET 06150 EPDM



ANGELO PO 3035850

ANGELO PO 3152160

Suitable for:

3355458 HEATING ELEMENT BOILER 6000W 230V
 immersed depth 365 mm
 flange external \varnothing 55 mm
 complete with gasket OR \varnothing 48 mm (3186001)



ANGELO PO 32G2180

Suitable for:

3186001 O-RING GASKET 06150 EPDM



ANGELO PO 3035850

ANGELO PO 3152160

3355142 HEATING ELEMENT BOILER 7000W 220/380V
 immersed depth 370 mm
 fastening fitting \varnothing 2" (56 mm)
 complete with gasket (3186012)
 for Dishwasher (ANGELO PO) AL75 - AL90 - APS160
 FL54S - FL74



ANGELO PO 32G0110

3755064 HEATING ELEMENT FINNED 1500W 230V
 immersed length 340 mm - width 93 mm
 finned part 300 mm - connections \varnothing 3/8" (16 mm)



ANGELO PO 32G2200

3455391 HEATING ELEMENT FINNED 2000W 230V
 immersed length 340 mm - width 95 mm
 finned part 300 mm - connections \varnothing 3/8" (16 mm)



ANGELO PO 32G2190

3355108 HEATING ELEMENT FOR BOILER 12500W 230/38
 immersed length 620 mm
 flange external \varnothing 72 mm - bulbholder sheathing
 complete with gasket OR \varnothing 67 mm (3186014)
 nut (3528232) and washer (3528238) on request



ANGELO PO 32G0840

3186014 O-RING GASKET 06225 EPDM \varnothing 67 mm



ANGELO PO 3150430

ANGELO PO 3151960

ANGELO PO 37Q5260



Suitable for:

ANGELO PO



3755026 HEATING ELEMENT FOR BOILER 2000W 230V
 immersed length 180 mm
 width 95 mm - flange 50x27 mm
 for Dishwasher (ANGELO PO) F60P - F60PR - F60T
 F80P - F80PR - L45



ANGELO PO 32G2070

Suitable for:

3355138 HEATING ELEMENT FOR BOILER 3000W 220V
 immersed length 290 mm
 fitting \varnothing 1"1/4 (43 mm)
 complete with gasket (3186010)
 nut (3528232) and washer (3528238) on request
 for Dishwasher (ANGELO PO) AP30



ANGELO PO 32G0500

3355140 HEATING ELEMENT FOR BOILER 4500W 220/380
 immersed length 330 mm
 fastening fitting \varnothing 2" (56 mm)
 complete with gasket (3186012)
 nut (3528232) and washer (3528238) on request
 for Dishwasher (ANGELO PO) FL34S - FL54



ANGELO PO 32G0170

3755028 HEATING ELEMENT FOR BOILER 7000W 230/400
 immersed length 425 mm
 flange external \varnothing 72 mm
 with probe receptacle
 complete with gasket OR \varnothing 67 mm (3186014)
 nut (3528232) and washer (3528238) on request
 for Dishwasher hood type (ANGELO PO) L100



ANGELO PO 32G0420

3186014 O-RING GASKET 06225 EPDM \varnothing 67 mm



ANGELO PO 3150430

ANGELO PO 3151960

ANGELO PO 37Q5260

3355480 HEATING ELEMENT FOR BOILER 9000W 220/380
 immersed length 460 mm
 flange external \varnothing 72 mm
 with probe receptacle \varnothing 7 mm
 complete with gasket OR \varnothing 67 mm (3186014)
 nut (3528232) and washer (3528238) on request



ANGELO PO 32G3410

3186014 O-RING GASKET 06225 EPDM \varnothing 67 mm



ANGELO PO 3150430

ANGELO PO 3151960

ANGELO PO 37Q5260



Suitable for:

3755042 HEATING ELEMENT TANK 1500W 220V
 immersed depth 210 mm
 flange external \varnothing 63 mm
 with bulbholder sheathing \varnothing 7 mm
 complete with gasket OR \varnothing 58 mm (3186013)



ANGELO PO 32G0480

Suitable for:

3355483 HEATING ELEMENT TANK 1850W 230V
 immersed depth 255 mm
 width 42 mm - flange 61x26 mm
 complete with gasket



ANGELO PO 3030180

3355485 HEATING ELEMENT TANK 2700W 230V
 immersed depth 350 mm
 width 42 mm - flange 61x26 mm
 complete with gasket



ANGELO PO 32G3360

3755065 HEATING ELEMENT TANK 3000W 230V
 immersed depth 360 mm
 width 35 mm - fittings \varnothing 10 mm



ANGELO PO 32G2590

3355740 HEATING ELEMENT THREE-PHASE 4500W 220V
 immersed depth 300 mm
 fastening fitting \varnothing 2" (56 mm)
 complete with gasket (3186012)
 nut on request (3528233) and washer (3528238)
 for Dishwasher (ANGELO PO) FL34S - FL54



ANGELO PO

3755941 HEATING ELEMENT 14000W 230/400V
 immersed length 510 mm
 external \varnothing flange 72 mm - with probe receptacle
 complete with gasket OR \varnothing 67 mm (3186014)
 nut (3528232) and washer (3528238) on request



ANGELO PO 32G2000

ANGELO PO 32G2340

ANGELO PO 32G2840

3755071 HEATING ELEMENT 2613/2400W 240/230V
 for tank and boiler
 immersed depth 320 mm
 flange external \varnothing 72 mm - with probe receptacle
 complete with gasket OR \varnothing 67 mm (3186014)
 nut (3528232) and washer (3528238) on request
 for Dishwasher (ANGELO PO) L40



ANGELO PO 32G0390

ANGELO PO 32G0790

3355139 HEATING ELEMENT 3000W 220/380V
 for tank and boiler
 immersed depth 320 mm
 fitting \varnothing 1"1/2 (47 mm)
 complete with gasket (3186011)
 nut (3528232) and washer (3528238) on request
 for Dishwasher (ANGELO PO) AP30 - AP80



ANGELO PO 32G0470



Suitable for:

ANGELO PO



Suitable for:

3355105 HEATING ELEMENT 4200W 230/380V
 for boiler and wash tank
 immersed depth 340 mm
 flange external \varnothing 72 mm - with bulb-sheathing
 complete with gasket OR \varnothing 67 mm (3186014)
 for Dishwasher (ANGELO PO) FL34S - FL54 - L40S
 L60
 for Dishwasher hood type (ANGELO PO) L100 - L80

3186014 O-RING GASKET 06225 EPDM \varnothing 67 mm



ANGELO PO 32G0230

ANGELO PO 32G0380

ANGELO PO 3150430

ANGELO PO 3151960

ANGELO PO 37Q5260

3355106 HEATING ELEMENT 6000W 230/400V
 for boiler and wash tank
 immersed length 350 mm
 ext. \varnothing flange 72 mm - with bulb-sheathing
 with O-ring gasket \varnothing 67 mm (3186014)
 nut (3528232) and washer (3528238) on request
 for Dishwasher (ANGELO PO) AL75 - AL90 - AP9
 for Dishwasher hood type (ANGELO PO) L100 - L80

3186014 O-RING GASKET 06225 EPDM \varnothing 67 mm



ANGELO PO 32G0400

ANGELO PO 32G0520

ANGELO PO 32G0920

ANGELO PO 3150430

ANGELO PO 3151960

ANGELO PO 37Q5260

ANGELO PO 32G2580

3755063 HEATING ELEMENT 8000W 230V
 immersed depth 545 mm
 flange external \varnothing 55 mm
 complete with gasket OR \varnothing 48 mm (3186001)



ANGELO PO 32G2170

3355107 HEATING ELEMENT 9000W 230/380V
 for tank and boiler
 immersed depth 485 mm
 flange external \varnothing 72 mm - with probe receptacle
 complete with gasket OR \varnothing 67 mm (3186014)
 nut (3528232) and washer (3528238) on request

3186014 O-RING GASKET 06225 EPDM \varnothing 67 mm



ANGELO PO 32G0850

ANGELO PO 32G2100

ANGELO PO 32G2720

ANGELO PO 3150430

ANGELO PO 3151960

ANGELO PO 37Q5260



Hinges, catches and accessories

3250034 DOOR RETURN SPRING 270 mm



ANGELO PO 36H1430

3346032 PIN FOR HANDLE SPRING WHEEL
length 33 mm - top \varnothing 25 mm
bottom \varnothing 20 mm - internal \varnothing 15 mm



ANGELO PO 36C3560

3346031 SPRING SUPPORT WHEEL \varnothing 30 mm



ANGELO PO 36H0450

3053086 RIGHTHAND DOOR HINGE
for Dishwasher (ANGELO PO) F60P - F60PR - F60T
F80P - F80PR



ANGELO PO 30T1340

3053087 LEFTHAND DOOR HINGE
complete with screw and gasket
for Dishwasher (ANGELO PO) F60P - F60PR - F60T
F80P - F80PR



ANGELO PO 30T1350

3250222 SPLIT PIN \varnothing 2x30 mm
UNI 1336 - DIN 94 - ISO 1234



ANGELO PO 31Z0170

3053088 GASKET \varnothing 18 mm
for Dishwasher (ANGELO PO) F60P - F60PR - F60T
F80P - F80PR



ANGELO PO 3152010

3053089 RH/LH SPRING FOR HINGE L 220 mm
for Dishwasher (ANGELO PO) F60P - F60PR - F60T
F80P - F80PR



ANGELO PO 36G1340



Suitable for:

3053145 TURNBUCKLE FOR SPRING \varnothing 18 mm



ANGELO PO 36G7400

ANGELO PO



Suitable for:

3053132 CLASP \varnothing 3x22 mm
UNI 6873 - DIN 1481 - ISO 8752



ANGELO PO 36G8370

Hose-end fittings

3243390 ELBOW FITTING \varnothing 3/8" M
hose-end fitting \varnothing 12 mm



ANGELO PO 3110340

3315025 HOSE-END FITTING \varnothing 1/2" M
for Dishwasher (ANGELO PO) L40 - L60
for Dishwasher hood type (ANGELO PO) L100 - L80



ANGELO PO 33Q5100

3315016 HOSE-END FITTING 90° \varnothing 1/4" x \varnothing 13 mm
for rinse arm



ANGELO PO 33Q4270

3315102 T HOSE-END FITTING 11.5 mm



ANGELO PO 33M0580

ANGELO PO 33Q4450

3315015 T-SHAPED FITTING REDUCED
two connections \varnothing 12 and one \varnothing 7 mm



ANGELO PO 35Z1090

Hydraulic piping

3450622 PRESSURE SWITCH PIPE \varnothing 5x11 mm - 5 m
temperature -30°+110°C
operating pressure 10 bar
burst pressure 40 bar
non-toxic rubber hose
external \varnothing 11 mm
internal \varnothing 5 mm
5-m bundles
for 50-m bundles see 3450652



ANGELO PO 111AA04

3450652 PRESSURE SWITCH PIPE \varnothing 5x11 mm - 50 m
temperature -30°+110°C
operating pressure 10 bar
burst pressure 40 bar
non-toxic rubber hose
external \varnothing 11 mm
internal \varnothing 5 mm
50-m bundles
for 5-m bundles see 3450622



ANGELO PO 111AA04

Suitable for:

3450114 PVC PIPE \varnothing 4/7 mm - 10 mt
alimentary



ANGELO PO 111AA09

ANGELO PO 111AA09_10MT

Suitable for:

3450197 RUBBER HOSE \varnothing 11x19 mm - 45 mt
temperature $-30^{\circ}+110^{\circ}\text{C}$
operating pressure 10 bar
burst pressure 40 bar
non-toxic rubber hose
external \varnothing 19 mm
internal \varnothing 11 mm
45 m bundles
for 5-m bundles see 3450297



ANGELO PO 131AA14

ANGELO PO 131AA16

3450297 RUBBER HOSE \varnothing 11x19 mm - 5 m
temperature $-30^{\circ}+110^{\circ}\text{C}$
operating pressure 10 bar
burst pressure 40 bar
non-toxic rubber hose
external \varnothing 19 mm
internal \varnothing 11 mm
5-m bundles
for 50-m bundles see 3450197



ANGELO PO 131AA14

ANGELO PO 131AA16

3450211 RUBBER PIPE \varnothing 10x17 mm - 40 m
operating temperature $-40+100^{\circ}\text{C}$



ANGELO PO 131AA12

3450111 RUBBER PIPE \varnothing 10x17 mm - 5 m
operating temperature $-40+100^{\circ}\text{C}$



ANGELO PO 131AA12

3450651 RUBBER PIPE 110°C . \varnothing 10x16 mm - 40 m
temperature $-30^{\circ}+110^{\circ}\text{C}$
operating pressure 10 bar
burst pressure 40 bar
non-toxic rubber hose
external \varnothing 16 mm
internal \varnothing 10 mm
40-m rolls
for 5-m rolls see 3450621



ANGELO PO 111AA05



Suitable for:

3450621 RUBBER PIPE 110°C. \varnothing 10x16 mm - 5 m
 temperature -30°+110°C
 operating pressure 10 bar
 burst pressure 40 bar
 non-toxic rubber hose
 external \varnothing 16 mm
 internal \varnothing 10 mm
 for 40 m rolls see 3450651



ANGELO PO 111AA05

Suitable for:

3450118 RUBBER PIPE 8x15 mm INDUSTRIA 10
 sold per meter



ANGELO PO 33M1310

Indicator lights

3221055 BLUE INDICATOR LAMP 220V
 for AL



ANGELO PO 32W1250

3221054 GREEN INDICATOR LAMP 220V



ANGELO PO 32W1230

3221091 GREEN INDICATOR LAMP 230V
 head \varnothing 7 mm - hole \varnothing 6 mm
 with cable 250 mm



ANGELO PO 32W4220

3221034 GREEN INDICATOR LAMP 400V
 head \varnothing 13.5 mm - hole \varnothing 10 mm - 120°C
 universal application



ANGELO PO 32W1560

ANGELO PO 32W1561

ANGELO PO 6300652

ANGELO PO 32W1562

3221430 INDICATOR LAMP ORANGE 400V
 head \varnothing 14 mm - hole \varnothing 10 mm
 universal application



ANGELO PO 3106730+3101450

ANGELO PO 32W2240

ANGELO PO 32W2241



Suitable for:

ANGELO PO



3221035 RED INDICATOR LAMP 400V
head \varnothing 13.5 mm - hole \varnothing 10 mm - 120°C
universal application



ANGELO PO 32W1550

ANGELO PO 32W1551

3221011 ORANGE INDICATOR LAMP 230V
head \varnothing 13.5 mm - hole \varnothing 10 mm - 120°C
universal application



ANGELO PO 3106730

ANGELO PO 32W0790

ANGELO PO 32W0791

3221032 GREEN INDICATOR LAMP 230V
head \varnothing 13.5 mm - hole \varnothing 10 mm - 120°C
universal application



ANGELO PO 3106710

ANGELO PO 32W1330

ANGELO PO 32W1331

3221033 RED INDICATOR LAMP 230V
head \varnothing 13.5 mm - hole \varnothing 10 mm - 120°C
universal application



ANGELO PO 32W1340

3221096 ORANGE INDICATOR LAMP 230V
head \varnothing 7 mm - hole \varnothing 6 mm
wire connection length 210 mm



ANGELO PO 32W2250

3221635 WHITE INDICATOR LIGHT 250V 120°



ANGELO PO 32W1220

Inlet hoses

3449001 INLET ELBOW HOSE \varnothing 3/4" FF 1500 mm
thermoplastic hose \varnothing 10x16 mm
nylon fittings \varnothing 3/4" with gaskets
max temperature 90°C
max pressure 10 bar



ANGELO PO 33M0350



Suitable for:

ANGELO PO



Suitable for:

Ironmongery (screws,nuts,washers)

3528093 HEXAGONAL HEAD SCREW M10x35
st./steel - UNI 5739 - DIN 933 - ISO 4017



ANGELO PO 3016470

1349504 NUT \varnothing 1/2" KEY 25x6 mm



ANGELO PO 33Q4410

1252093 ST.STEEL SCREW FOR DOSING ADJUST. M8x70



ANGELO PO 3104860

1186399 WASHER FLAT M16
internal/external \varnothing 17/30 mm - thickness 3 mm
in zinc plated iron alloy
UNI 6592 - DIN 125 A - ISO 7089



ANGELO PO 3121440

3528237 WASHER FLAT WIDE M10
internal/external \varnothing 10.5/30 mm - thickness 2.5 mm
stainless steel - UNI 6593 - DIN 9021 - ISO 7093



ANGELO PO 3014810

Knobs

3241114 KNOB WHITE \varnothing 38 mm
square hole 5x5 mm
for selector switch



ANGELO PO 36M1580

3241116 KNOB WHITE \varnothing 38 mm
D shaft hole 6x4.6 mm
for thermostat and programme switch



ANGELO PO 36M1590

3241186 SELECTOR KNOB \varnothing 38 mm
D hole 6x4.6 mm for selector switch
for Dishwasher (ANGELO PO) F60P - F60PR - F60T
F80P - F80PR - L40 - L40S - L45 - L60
for Dishwasher hood type (ANGELO PO) L100 - L80



ANGELO PO

ANGELO PO 36M1511



Labels for control panels

- 3399006 CONTROL PLATE ABS 600x78 mm**
for old and new models
for Dishwasher (ANGELO PO) L40 - L40S - L60



ANGELO PO 35B26220

ANGELO PO 35B8741

Lever mixers

- 3359178 SINGLE-HOLE LEVER MIXER STYL**
cartridge with ceramic discs V090 \varnothing 40
gray lever 220 mm
pipe \varnothing 20 x 300 mm
power \varnothing 1/2"



ANGELO PO CEG

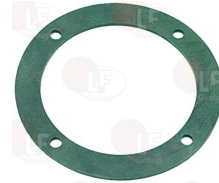
Manifolds for dishwashers

- 3160081 HOUSING MANIFOLD FOR DRAIN INLET**
for Dishwasher (ANGELO PO) F60P - F60PR - F60T
F80P - F80PR - L45



ANGELO PO 33M0170

- 3186281 ASPIRATION ASSEMBLY GASKET**



ANGELO PO 3150290

- 3160082 FLANGE FOR MANIFOLD**



ANGELO PO 33M0180



Suitable for:

ANGELO PO



Suitable for:

Microswitches

3240179 MAGNETIC MICROSWITCH E5301C
0.4A 250V - contact NO - head 65x20x9 mm
with cable length 500 mm



ANGELO PO 32W1210

3240189 MICRO SWITCH M1DX20 10A 250V



ANGELO PO 32W3020

3240149 MICROSWITCH FR508A 3A 400V
for Dishwasher hood type (ANGELO PO)
since 1/01/95
L100 - L80



ANGELO PO 32W3251

9014015 MICROSWITCH MAGNETIC ø 10x33 mm
0.04A 250V - contact NO
with cable length 750 mm
for Dishwasher (ANGELO PO) F60 - F80



ANGELO PO 32W3200

ANGELO PO 32W3240

ANGELO PO 32Z8650

3240148 MICROSWITCH MAGNET 63x19x11 mm
for Dishwasher (ANGELO PO) F60P - F60PR - F60T
F80P - F80PR



ANGELO PO 3023650

ANGELO PO 32W0870

ANGELO PO 32W1680

3240256 MICROSWITCH MAGNETIC E5501B
1 contact NO 250V 1A 50W
cable length 1200 mm
for Dishwasher hood type (ANGELO PO)
LC100 - LC130 - LC80



ANGELO PO 32W2160

3240148 MICROSWITCH MAGNET 63x19x11 mm
for Dishwasher (ANGELO PO) F60P - F60PR - F60T
F80P - F80PR



ANGELO PO 3023650

ANGELO PO 32W0870

ANGELO PO 32W1680



Suitable for:

Suitable for:

3240176 MICROSWITCH MOUJEN MN-5310
 1-NO 1-NC 10A 250V
 for Dishwasher hood type (ANGELO PO)
 till 1/01/95
 L100 - L80

3240183 MICROSWITCH 15A 250V



ANGELO PO 32W1410

ANGELO PO 32W1180

3240410 MICROSWITCH 16(4)A 250V

3240820 MICROSWITCH 16A 250V



ANGELO PO 32W0960

ANGELO PO 32W1660

ANGELO PO 32W3340

ANGELO PO 32W1320

Non-return and expansion valves

1526503 NON-RETURN VALVE \varnothing 40 mm
 ballcock - outlets \varnothing 12 mm
 stainless steel cap

1186805 O-RING 0115 EPDM



ANGELO PO 33D0650

ANGELO PO 33D2100

ANGELO PO 33D2330

ANGELO PO 3152100

OR and ORM gaskets

3186338 O-RING 04143 EPDM



ANGELO PO 3150010

Pegs

3389017 CENTRAL FINGER FOR BELT
 for Dishwasher conveyor type (ANGELO PO)
 Series N



ANGELO PO 36D0600



Suitable for:

ANGELO PO



Suitable for:

Pins

3243576 LOCKING NUT FOR SPINDLE



ANGELO PO 33Q1890

3243577 LOWER RINSE ARM ASSEMBLY SPINDLE



ANGELO PO 33Q2000

3743361 PIN FOR RINSE ARM ASSEMBLY



ANGELO PO 3036720

ANGELO PO 33Q6400

3743296 RINSE IMPELLER PIN



ANGELO PO 36G8470

3243482 SPINDLE ASSEMBLY FOR ROTATING BOSS



ANGELO PO 36G7410

3243574 UPPER RINSE ARM ASSEMBLY SPINDLE



ANGELO PO 33Q1090

Pre-rinse units

3359209 SINGLE-HOLE PREWASH SET STYL

with pre-wash set
mixer with basin connections
with retention valves
connection \varnothing 3/4" M



ANGELO PO DF

3359605 WHITE SHOWER HEAD NEW \varnothing 1/2" F



ANGELO PO 33D1700

Pressure switches

3320027 PRESSURE SWITCH 1 LEVEL

calibration 50/30 mm
250V 16A
max operating temperature 85°C



ANGELO PO 32Z4700

3320029 PRESSURE SWITCH 1 LEVEL

calibration 40/20 mm
250V 16A
max operating temperature 85°C



ANGELO PO 32Z8930



Suitable for:

3320036 PRESSURE SWITCH 1 LEVEL
calibration 75/35 mm
250V 16A
max operating temperature 85°C



ANGELO PO 3320070

Suitable for:

3320040 PRESSURE SWITCH 1 LEVEL
calibration 70/40 mm
250V 16A
max operating temperature 85°C



ANGELO PO 3320280

3320042 PRESSURE SWITCH 1 LEVEL
250V 16A
calibration 225/70 mm
max operating temperature 85°C



ANGELO PO 3320860

3320063 PRESSURE SWITCH 1 LEVEL
calibration 110/70 mm
250V 16A
max operating temperature 85°C



ANGELO PO 3324690

3320067 PRESSURE SWITCH 1 LEVEL
calibration 90/35 mm
250V 16A
max operating temperature 85°C



ANGELO PO 332V1870

3320071 PRESSURE SWITCH 1 LEVEL
calibration 55/30 mm
250V 16A
max operating temperature 85°C

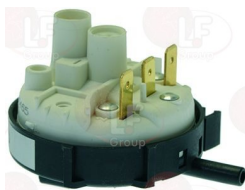


ANGELO PO 332V7060

ANGELO PO 3322170

ANGELO PO 332V190

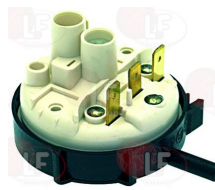
3320086 PRESSURE SWITCH 1 LEVEL
calibration 65/10 mm
250V 16(4)A



ANGELO PO 3324740

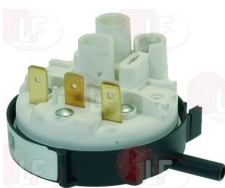
ANGELO PO 3324741

3320098 PRESSURE SWITCH 1 LEVEL
calibration 250/40 mm
250V 16(4)A
for Dishwasher hood type (ANGELO PO) KD130



ANGELO PO 332V7050

3320226 PRESSURE SWITCH 1 LEVEL
calibration 90/120 mm
for Dishwasher pull-through (ANGELO PO) C207S



ANGELO PO 3328880

3320087 PRESSURE SWITCH 2 LEVELS
1st level calibration 70/40 mm
2nd level calibration 90/70 mm



ANGELO PO 3322840



Suitable for:



Suitable for:

Pump motors

3122769 ELECTRIC PUMP AP C7670SX 0.15HP
 inlet external \varnothing 28 mm - outlet external \varnothing 28 mm
 0.15HP 230V 50Hz - motor revolutions 2850
 capacitor 6.3 μ f



ANGELO PO 32M2950

3122382 ELECTRIC PUMP AP C7675SX 0.40HP
 inlet external \varnothing 45 mm - outlet external \varnothing 42 mm
 0.40HP 230V 50Hz - motor revolutions 2850
 capacitor 12 μ f



ANGELO PO 32M2940

3122388 IMPELLER \varnothing 87 mm



ANGELO PO 36G1460

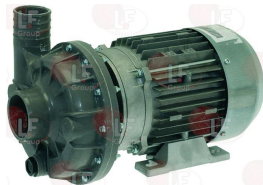
3122024 SEAL MECHANICAL FOR SHAFT \varnothing 12 mm
 metal seal \varnothing internal 11 mm - \varnothing external 24 mm
 height 15.5 mm
 back. element \varnothing internal 14 mm - \varnothing external 24 mm
 height 8 mm



ANGELO PO 3036790

ANGELO PO 3152080

3122033 ELECTRIC PUMP FIR 1225SX 1.50HP
 inlet external \varnothing 63 mm - outlet external \varnothing 48 mm
 1.50HP 220/400V 50Hz 4.8/2.8A - motor revol. 2800
 flow rate 625 L/min.



ANGELO PO 32M3660

3122024 SEAL MECHANICAL FOR SHAFT \varnothing 12 mm
 metal seal \varnothing internal 11 mm - \varnothing external 24 mm
 height 15.5 mm
 back. element \varnothing internal 14 mm - \varnothing external 24 mm
 height 8 mm



ANGELO PO 3036790

ANGELO PO 3152080

Suitable for:

Suitable for:

3122017 ELECTRIC PUMP FIR 2292SX 0.75HP
 inlet external \varnothing 45 mm - outlet external \varnothing 40 mm
 0.75HP 230V 50Hz 4A - motor revolutions 2800
 capacitor 12.5 μ f - flow rate 280 l/min.
 for Dishwasher (ANGELO PO) L40 - L40S

3122019 IMPELLER \varnothing 103 mm

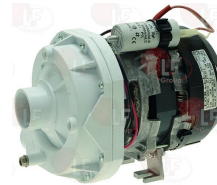


ANGELO PO 32M2140

ANGELO PO 32G0260

3122392 ELECTRIC PUMP LGB ZF130DX 0.28HP
 inlet external \varnothing 28 mm - outlet external \varnothing 28 mm
 0.28HP 230V 50Hz - motor revolutions 2800
 capacitor 6.3 μ f

3122399 ELECTRIC PUMP LGB ZF270VSX 0.53HP
 inlet external \varnothing 45 mm - outlet external \varnothing 39 mm
 0.53HP 230V 50Hz 1.7A - motor revolutions 2800
 capacitor 10 μ f



ANGELO PO 32M2920

ANGELO PO 32M5770

3122393 ELECTRIC PUMP LGB ZF320VSX 0.75HP
 inlet external \varnothing 45 mm - outlet external \varnothing 40 mm
 1HP 230V 50Hz - motor revolutions 2800
 capacitor 12.5 μ f



ANGELO PO 32M2910

ANGELO PO 32M4760

3122276 ELECTRIC PUMP OP T.45 0.45HP
 inlet external \varnothing 33 mm - outlet external \varnothing 30 mm
 additional outlet external \varnothing 28 mm
 0.45HP 230V 50Hz 1.8A - motor revolutions 2750
 capacitor 8 μ f

3122024 SEAL MECHANICAL FOR SHAFT \varnothing 12 mm
 metal seal \varnothing internal 11 mm - \varnothing external 24 mm
 height 15.5 mm
 back. element \varnothing internal 14 mm - \varnothing external 24 mm
 height 8 mm



ANGELO PO 3034630

ANGELO PO 3036790

ANGELO PO 3152080



Suitable for:

3122264 ELECTRIC PUMP OP T.7 0.70HP
 inlet external \varnothing 50 mm - outlet external \varnothing 30 mm
 additional outlet external \varnothing 30 mm
 0.70HP 230V 50Hz 3.2A - motor revolutions 2750
 capacitor 12.5 μ F



ANGELO PO 3022650

3122746 IMPELLER FOR PUMP \varnothing 91 mm
 for DISHWASHER GS50



ANGELO PO 3025590

3122802 ELECTROPUMP FIR 1227LH 2.70HP
 inlet external \varnothing 63 mm - outlet external \varnothing 48 mm
 2.70HP 220/400V 50Hz - Rpm 2800



ANGELO PO 32M1480

Suitable for:

3122268 GASKET FOR PUMP HOUSING T.41 0.4HP



ANGELO PO 3025600

3122024 SEAL MECHANICAL FOR SHAFT \varnothing 12 mm
 metal seal \varnothing internal 11 mm - \varnothing external 24 mm
 height 15.5 mm
 back. element \varnothing internal 14 mm - \varnothing external 24 mm
 height 8 mm



ANGELO PO 3036790

ANGELO PO 3152080

Relays

3351037 POWER RELAY FINDER 40.52.8.230.0000
 230V 50/60Hz - 2 exchange contacts 8A



ANGELO PO 32V6630

3351021 POWER RELAY FINDER 62.82.8.230.0000
 230V 50/60Hz
 2 exchange contacts 16A



ANGELO PO 32V7100

ANGELO PO 32Z2000

3351008 POWER RELAY FINDER 62.83.8.230.0000
 230V 50/60Hz
 3 exchange contacts 16A



ANGELO PO 32V2950

3351602 POWER RELAY FINDER 65.31.8.230.0300
 230V 50/60Hz
 1 contact NO 30A



ANGELO PO 32V3720

Suitable for:

Suitable for:

3351097 RELAY POWER FINDER 62.82.8.230.0309
 230V 50/60Hz
 2 NO contacts 16A
 for Dishwasher hood type (ANGELO PO) KD130
 KD130A



ANGELO PO 32V7090

Rinse aid containers and accessories

3066021 RINSE AID CONTAINER
 for Dishwasher (ANGELO PO) L40 - L40S - L60



ANGELO PO 33D1350

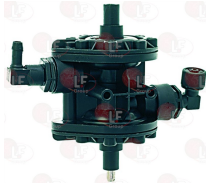
3066036 RINSE AID CONTAINER
 for Dishwasher (ANGELO PO) F60P - F60PR - F60T
 F80P - F80PR - L45



ANGELO PO 33D0660

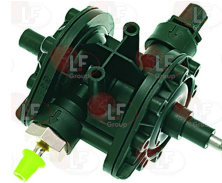
Rinse aid pumps and accessories

3090086 DOSING PUMP HYDRAULIC FOR RINSE AID
 with EPDM diaphragm
 minimum pressure 0,5 bar
 inlet side hose fitting 4 mm
 pressure side hose fitting 8 mm



ANGELO PO 33D2300

3090040 HYDRAUL. RINSE AID INJECTOR N6 E 05 G4G6
 with diaphragm in EPDM
 minimum pressure 0.5 bar
 intake side connection for tube 4 mm.
 pressure side connection for tube 6 mm.



ANGELO PO 33D0380

3090001 HYDRAULIC RINSE AID INJECTOR
 for rinse aid



ANGELO PO 33D0060

ANGELO PO 33D0061

3090002 DIAPHRAGM FOR RINSE AID INJECTOR



ANGELO PO

3090010 HOSE-END ELBOW FOR RINSE AID INJECTOR



ANGELO PO

3090003 INLET VALVE FOR RINSE AID INJECTOR



ANGELO PO



Suitable for:

ANGELO PO



Suitable for:

3090083 RINSE AID DISPENSER
 adjusting screw
 complete with transp.rubber hose and bottom filter



ANGELO PO 33D3240

3090038 RINSE AID INJECTOR DB2
 power supply 220/240V 50Hz
 screw for flow rate regulation



ANGELO PO

3090039 COIL 220/240V 50Hz



ANGELO PO

3090003 INLET VALVE FOR RINSE AID INJECTOR



ANGELO PO

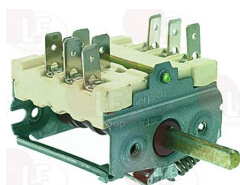
3090107 RINSE AID INJECTOR 220V 50/60Hz



ANGELO PO 32Z1610

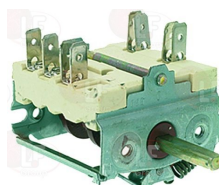
Rotary switches

3059057 SELECTOR SWITCH 0-1 POSITIONS
 ON-OFF-START
 16A 250V - max 150°C
 D-shaped pin ø 6x4.6 mm



ANGELO PO 3041660

3057062 SELECTOR SWITCH 0-5 POSITIONS
 contact capacity 16A 250V - max 150°C
 D-shaped pin ø 6x4.6 mm
 for Dishwasher (ANGELO PO) F60P - F60T - F80P
 L40 - L45 - L60
 for Dishwasher hood type (ANGELO PO) L100 - L80



ANGELO PO 32W0980

Suitable for:

3059006 SELECTOR SWITCH 16A 250V
square spindle 5x5 mm



ANGELO PO 32W1200

Suitable for:

3319755 SELECTOR 4 POSITIONS 16A



ANGELO PO 32W4250

Solenoid valves

3120004 SOLEN. VALVE ELBI TYPE 319 1 WAY 90°
220/240V 50/60Hz - max. temperature 90°C
inlet 3/4" - outlet \varnothing 10.5 mm



ANGELO PO 33D1370

ANGELO PO 33D1371

3120504 SOLEN. VALVE ELBI TYPE 319 1 WAY 90°
24V 50/60Hz - max. temperature 90°C
inlet 3/4" - outlet \varnothing 10.5 mm



ANGELO PO

3120005 SOLEN. VALVE ELBI TYPE 329 1 WAY 180°
220/240V 50/60Hz - max. temperature 90°C
inlet 3/4" - outlet \varnothing 10.5 mm



ANGELO PO 33D2310

ANGELO PO 33D3260

3120006 SOLEN. VALVE ELBI TYPE 339 2 WAY 90°
220/240V 50/60Hz - max. temperature 90°C
inlet 3/4" - two outlets \varnothing 10.5 mm



ANGELO PO 33D0290

3120007 SOLEN. VALVE ELBI TYPE 349 2 WAY 180°
220/240V 50/60Hz - max. temperature 90°C
inlet 3/4" - two outlets \varnothing 10.5 mm



ANGELO PO 33D1641

ANGELO PO 33D3250

3120511 SOLEN. VALVE ELBI TYPE 350 1 WAY 90°
24V 50/60Hz - max. temperature 90°C
inlet 3/4" - outlet \varnothing 13.5 mm



ANGELO PO

3120408 SOLEN. VALVE T&P 1 WAY 90°
230V 50/60Hz - max. temperature 90°C
inlet 3/4" - outlet \varnothing 13.5 mm



ANGELO PO 33D3280

3120400 SOLENOID VALVE INVENSYS 1-WAY 90°
12Vac/dc 50/60Hz - max. temperature 90°C
inlet 3/4" - outlet \varnothing 13.5 mm
operating pressure from 0.2 to 10 bar
flow rate 1.2 m³/h



ANGELO PO



Suitable for:

ANGELO PO



Suitable for:

3120541 SOLENOID VALVE L140B5 \varnothing 1/2" FF 24V
 for water
 normally closed
 max. temperature 100°C
 max. differential pressure 10 bar
 coil 24V 50/60Hz



ANGELO PO 33D1060

3120112 SOLENOID VALVE L145R2 \varnothing 1" FF 230V
 for steam
 NC (ex L142 M2)
 max. temperature 175°C
 max. pressure differential 12 bar
 coil 220V 50Hz



ANGELO PO 33D1420

3120610 SOLENOID VALVE L145R2 1/2" FF 24V
 for steam
 normally closed (ex L142 M2)
 max. temperature 175°C
 max. differential pressure 12 bar
 coil 24V 50Hz



ANGELO PO 33D0570

3120038 SOLENOID VALVE L153 D5 \varnothing 1" FF 230V
 for steam
 NC (ex 149D4)
 max. temperature 140°C
 coil 230V 50Hz



ANGELO PO 33D0560

3120558 SOLENOID VALVE L182B17 3/4" FF 24V
 EX L180
 for water
 NC
 max. temperature 100°C
 max. differential pressure 16 bar
 coil 24V 50/60Hz



ANGELO PO 33D1050

3120057 SOLENOID VALVE L182B31 \varnothing 1/2" FF 230V
 EX L180
 for water
 NC
 max. temperature 100°C
 max. pressure differential 16 bar
 coil 230V 50/60Hz



ANGELO PO 33D0070

ANGELO PO 33D1460

3120557 SOLENOID VALVE L182B31 1/2" FF 24V
 EX L180
 for water
 NC
 max temperature 100°C
 max differential pressure 16 bar
 coil 24V 50/60Hz



ANGELO PO

3120500 SOLENOID VALVE MULLER 2 WAY 180°
 230V 50Hz - max temperature 90°C
 inlet 3/4" - two outlets \varnothing 10.5 mm



ANGELO PO 3014720

ANGELO PO 3014721

Suitable for:

Suitable for:

3120537 SOLENOID VALVE MULLER 2-WAY 180°
 220/240V 50/60Hz - max. temperature 90°C
 inlet 3/4" - two outlets \varnothing 10.5 mm



ANGELO PO 33D1710

ANGELO PO 33D2410

Springs

5024902 DOOR SPRING SET 2.95Kg
 \varnothing external dimensions 50x50 mm
 internal hole \varnothing 8 mm



ANGELO PO 36G8750

3250066 HOOD LIFTING SPRING \varnothing 39x390 mm
 for DISHWASHER 1000-1300-1300S



ANGELO PO 36G8870

1186504 WASHER FLAT M10
 internal/external \varnothing 10.5/20 mm - thickness 2 mm
 stainless steel - UNI 6592 - DIN 125 A - ISO 7089



ANGELO PO 3120080

ANGELO PO 3128790

3250069 SPRING FOR DOOR \varnothing 44x40 mm
 carrying capacity: kg 5.2
 for TR3000



ANGELO PO 36G8740



Suitable for:

ANGELO PO



Suitable for:

Supports

8000046 SUPPORT PEG SLIDEWAYS 79x45x52 mm
 for Dishwasher pull-through (ANGELO PO) CS243D
 CS243S - CS370AD - CS370AS - CS370D - CS370S
 C165D - C165S - C207D - C207S - C304AD
 C304AS - C304D - C304S



ANGELO PO 30T3390

Supports for wash and rinse arms

3743142 ARM TOP BOSS



ANGELO PO 36G9070

3243573 FLANGE ø 92 mm FOR SUPPORT
 for Dishwasher (ANGELO PO) F60P - F60PR - F60T
 F80P - F80PR - L45



ANGELO PO 33M0360

3243572 LOWER FITTING
 for Dishwasher (ANGELO PO) F60P - F60PR - F60T
 F80P - F80PR - L45



ANGELO PO 3070540

ANGELO PO 33M0340

3243939 LOWER FITTING SPACER
 external ø 80 mm
 for Dishwasher (ANGELO PO) F60P - F60PR - F60T
 F80P - F80PR - L45



ANGELO PO 33M0300

3243843 LOWER WASH ARM ASSEMBLY SUPPORT



ANGELO PO 36G9020

3186431 GASKET FLAT EPDM ø 60x47x3 mm
 for wash support



ANGELO PO 37Q4220

3243845 RING NUT FOR LOWER SUPPORT



ANGELO PO 33Q4220

3243841 UPPER/LOWER SUPPORT SPINDLE



ANGELO PO 36G9080

Suitable for:

Suitable for:

3743197 RING NUT FOR BOTTOM HUB

3243483 ROTATING BOSS SUPPORT



ANGELO PO 36G9130

ANGELO PO 36G8070

3243998 STAINLESS STEEL DISK
ø internal 31 mm



ANGELO PO 3021600

3243838 WASH ARM ASSEMBLY SUPPORT

3243840 FLANGE FOR UPPER SUPPORT



ANGELO PO 36G9160

ANGELO PO 36U0740

3186431 GASKET FLAT EPDM ø 60x47x3 mm
for wash support

3243839 GASKET FOR SUPPORT



ANGELO PO 37Q4220

ANGELO PO 37Q4230

3243844 LOWER WASH ARM ASSEMBLY SUPPORT

3243845 RING NUT FOR LOWER SUPPORT



ANGELO PO 33Q4160

ANGELO PO 33Q4220

3243841 UPPER/LOWER SUPPORT SPINDLE

3243842 WASH ARM ASSEMBLY BOSS
complete with ring nut



ANGELO PO 36G9080

ANGELO PO 33M0500



Suitable for:

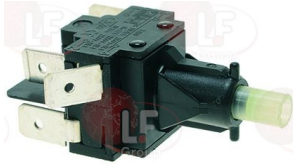
ANGELO PO



Suitable for:

Switches

3319168 BIPOLAR SWITCH 16A 250V



ANGELO PO 32W4140

3319920 BLACK TWO-POLE SWITCH 16A 250V



ANGELO PO 32W4150

3319646 GREEN/ORANGE CAM



ANGELO PO 33Q6440

3319571 HOUSING FOR PUSH-BUTTON SQUARE GRAY
mounting hole 28x28 mm - for push-button 23x23 mm



ANGELO PO 36U0860

3319647 PUSH-BUTTON SQUARE GREEN 23x23mm "ON/OFF"



ANGELO PO 32W4260

3319715 PUSH-BUTTON SQUARE YELLOW 23x23 mm



ANGELO PO 32W4270

3319427 SWITCH BIPOLAR
mounting hole 28.5x28.5 mm - push-button \varnothing 23 mm
16(6)A 250V



ANGELO PO 32V2030

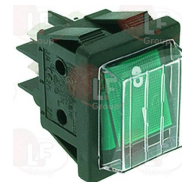
3319951 SWITCH 2 POLE GREEN 16A 250V
16(4)A 250V - max. temperature 125°C
with indicator lamp - mounting hole 25x27 mm
lead connector 6.35x0.8 mm



ANGELO PO 32W0990

ANGELO PO 32W3970

3319012 SWITCH 2-POLE GREEN 16A 250V
16(4)A 250V - max. temperature 120°C
with indicator lamp and push-button cap
mounting hole 22x30 mm - silk screen print 0 - I

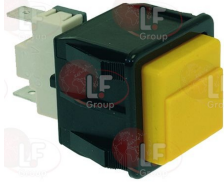


ANGELO PO 32W0631

Suitable for:

Suitable for:

3319232 YELLOW CYCLE START SWITCH
16(8)A/250V 2 contacts



ANGELO PO 32V2050

Telethermometers

3441011 BLACK TELETHERMOMETER 56x25 mm 0-120°C
plastic case
capillary length 1500 mm
bulb \varnothing 6x15 mm



ANGELO PO 32V1900

ANGELO PO 32Z0020

3441011 BLACK TELETHERMOMETER 56x25 mm 0-120°C
plastic case
capillary length 1500 mm
bulb \varnothing 6x15 mm



ANGELO PO 32V1900

ANGELO PO 32Z0020

3441008 TELETHERMOMETER BLACK \varnothing 52 mm 0-120°C
plastic case
PVC covered capillary 1500 mm
bulb \varnothing 6.5x2.6 mm



ANGELO PO 32Z2930

3441076 TELETHERMOMETER 63x11 mm 0-120°C
plastic case
covered capillary 2000 mm
bulb \varnothing 6x33 mm



ANGELO PO 32V7230

Terminal blocks

3247003 TERMINAL BLOCK 2-POLE CERAMIC
for cable max. 4 mm²
operating temperature 300°C
nominal voltage 450V
dimensions 20x21x18 mm



ANGELO PO 3000060

3247016 3-POLE TERMINAL BLOCK FV273 40A 450V
for cable max 6 mm²
operating temperature 150°C
nominal voltage 450 V



ANGELO PO 32D0171



Suitable for:

ANGELO PO



3247037 4-POLE TERMINAL BLOCK FV173 40A 600V
for cable max 6 mm²
operating temperature 150°C
nominal voltage 450 V



ANGELO PO 32D1800

Suitable for:

3247009 6-POLE TERMINAL BLOCK FV122/B 40A 600V
for cable max 6 mm²
operating temperature 150°C
nominal voltage 450 V



ANGELO PO 32D0250

ANGELO PO 32D0251

Thermostats

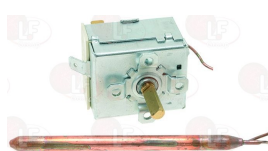
3444165 BOILER SAFETY THERMOSTAT 90-110°C
capillary 1000 mm
bulb ø 6.5x90 mm
15A 250V



ANGELO PO 32Z8530

ANGELO PO 32Z8830

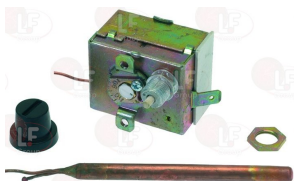
3444197 SINGLE PHASE THERMOSTAT 0-90°C
15A 250V
covered capillary 1000 mm
bulb ø 6.5x98 mm
D-shaped pin ø 6x4.6 mm



ANGELO PO 32V1910

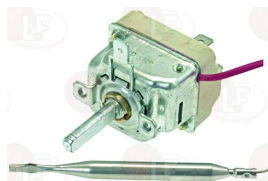
ANGELO PO 33V1910

3444282 SINGLE-PHASE THERMOSTAT 90-110°C
with manual reset
covered capillary 1500 mm
bulb ø 6.5x95 mm
15A 250V



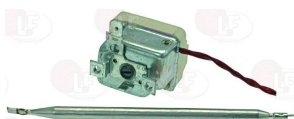
ANGELO PO 32V7260

3444271 SINGLE-PHASE THERMOSTAT +30+90°C
covered capillary length 900 mm
bulb ø 6x70 mm
D shaft ø 6x4.6 mm
for boiler
for Dishwasher (ANGELO PO) F60P - F60T - F80P
L45



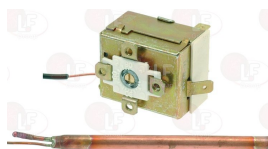
ANGELO PO 32V0200

3444276 SINGLE-PHASE THERMOSTAT +56°C
for tank safety
covered capillary 900 mm
bulb ø 6x120 mm
for Dishwasher (ANGELO PO) F60P - F60PR - F60T
F80P - F80PR - L40 - L40S - L45 - L60
for Dishwasher hood type (ANGELO PO) L100 - L80



ANGELO PO 32Z2430

3444280 SINGLE-PHASE THERMOSTAT 0-90°C
covered capillary 1500 mm
bulb ø 6.5x90 mm
15A 250V
with adjusting screw



ANGELO PO 32V7240



Suitable for:

Suitable for:

3444049 SINGLE-PHASE THERMOSTAT 30-90°C
 capillary 1700 mm
 button bulb \varnothing 15x20 mm
 16A 250V
 D shaft \varnothing 6x4.6 mm

3444059 SINGLE-PHASE THERMOSTAT 30-90°C
 D-shaped pin \varnothing 6x4.6 mm
 capillary 2000 mm - 16A 250V
 bulb \varnothing 6x130 mm - gland stuffing fitting M10x1
 for Dishwasher (ANGELO PO) L40 - L60
 for Dishwasher hood type (ANGELO PO) L100 - L80

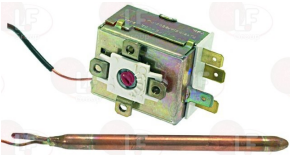


ANGELO PO 32Z0450

ANGELO PO 32Z0160

ANGELO PO 32Z5880

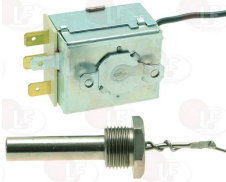
3444614 SINGLE-PHASE THERMOSTAT 90°C
 15A 250V
 covered capillary 2000 mm
 bulb \varnothing 6.5x90 mm



ANGELO PO 32Z7200

3444164 TANK THERMOSTAT 50°C
 covered capillary 600 mm
 button-shaped bulb \varnothing 10x48 mm
 15A 250V

3060087 BRASS NUT \varnothing 3/8"



ANGELO PO 32V2630

ANGELO PO 33Q2190

3444006 THERMOSTAT SINGLE-PHASE TR2 0-210°C
 D-shaped pin \varnothing 6x4.6 mm
 capillary length 1000 mm - 15A 250V
 bulb \varnothing 5x140 mm

3444004 THERMOSTAT SINGLE-PHASE TR2 0-90°C
 D-shaped pin \varnothing 6x4.6 mm
 capillary length 1500 mm - 15A 250V
 bulb \varnothing 6.5x95 mm



ANGELO PO 32Z8820

ANGELO PO 32Z8840



Suitable for:

ANGELO PO



Suitable for:

Tool holder shafts

9742006 TOOL SHAFT FEATHER
dimensions 6x6x25 mm



ANGELO PO 3191110

Tubing and hoses

3248205 HOSE FOR WATER OUTLET
for Dishwasher (ANGELO PO) KD60 - KD60E - KD60EAT
KD60M - KD60MA - KD60ME - KD60MPS



ANGELO PO 3245830

3248139 OUTLET HOSE
internal \varnothing 48/35/34 mm



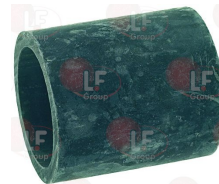
ANGELO PO 3031860

3248181 OUTLET HOSE
internal \varnothing 40 mm
length 250 mm



ANGELO PO 33M1270

3248193 PUMP OUTLET HOSE
internal \varnothing 40 mm
length 52 mm



ANGELO PO 33Q1290

Wash and rinse arms for warewashers

3243583 CAP FOR RINSE ARM ASSEMBLY
for Dishwasher (ANGELO PO) F60P - F60PR - F60T
F80P - F80PR



ANGELO PO 36R0030

3243834 CAP FOR RINSE ARM ASSEMBLY
for Dishwasher (ANGELO PO) LF50 - L45
for Dishwasher hood type (ANGELO PO) LC100 - LC130
LC80



ANGELO PO 36C3870

ANGELO PO 36Q0850

ANGELO PO 36U0680

Suitable for:

Suitable for:

3243244 COMPLETE RINSE ARM ASSEMBLY
 length 495 mm
 for Dishwasher (ANGELO PO) L40 - L40S - L60
 for Dishwasher hood type (ANGELO PO) L100 - L80

3243246 BUSHING \varnothing 26x8 mm



ANGELO PO 30Z0240

ANGELO PO 6001920

ANGELO PO 36D0740

3743143 FITTING 1/2"

3243248 RINSE ARM ASSEMBLY LOCKING NUT



ANGELO PO 33Q0650

ANGELO PO 33Q0510

3243937 RINSE ARM PLUG 1/4" M
 thread \varnothing 13 mm

3243245 RINSE JET
 for Dishwasher (ANGELO PO) L40 - L40S - L60
 for Dishwasher hood type (ANGELO PO) L100 - L80



ANGELO PO 36Q0180

ANGELO PO 33T1120

ANGELO PO 33T1121

3243247 WASH ARM ASSEMBLY BOSS



ANGELO PO 36D0720

3243579 COMPLETE RINSE ARM ASSEMBLY 490 mm
 for Dishwasher (ANGELO PO) LF50 - L45
 for Dishwasher hood type (ANGELO PO) LC100 - LC130
 LC80



ANGELO PO 30Z1440

ANGELO PO 30Z1491



Suitable for:

ANGELO PO



3743196 INOX PLUG



ANGELO PO 36Q1930

Suitable for:

3186577 FLAT GASKET SILICONE \varnothing 38x30x4 mm
for Dishwasher pull-through (ANGELO PO)
for Pan/utensilwashing machines (ANGELO PO) LP124S
LP124V - LP124VS - LP84S - LP84V - LP84VS



ANGELO PO 3152780

3243400 LOWER WASH/RINSE ARM ASSEMBLY



ANGELO PO 3022840

1186411 O-RING 02031 EPDM
for Dishwasher (ANGELO PO)
LF50 - L45
for Dishwasher hood type (ANGELO PO)
LC100 - LC130 - LC80



ANGELO PO 3035830

ANGELO PO 3152210

3243471 WASH ARM ASSEMBLY BOSS
complete with bushings



ANGELO PO 3071510

3243575 RING NUT FOR BOSS



ANGELO PO 33Q1860

3243384 BUSHING FOR WASH ARM ASSEMBLY \varnothing 14x11 mm



ANGELO PO 31Z0240

1186352 O-RING 02050 EPDM



ANGELO PO 3045420

3743884 RINSING IMPELLER 490 mm



ANGELO PO 3116580



Suitable for:

Suitable for:

3122414 STAINLESS STEEL WASH ARM ASSEMBLY
for Dishwasher (ANGELO PO) F60 - F80 - LF50
for Dishwasher hood type (ANGELO PO) LC80

1186352 O-RING 02050 EPDM



ANGELO PO 30Z2680

ANGELO PO 36G8540

ANGELO PO 3045420

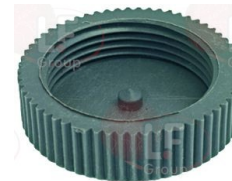
3243842 WASH ARM ASSEMBLY BOSS
complete with ring nut



ANGELO PO 33M0500

3743008 STAINLESS STEEL WASH ARM ASSEMBLY 530 mm

3501215 TERMINAL CAP
thread \varnothing 1"1/4
for Dishwasher pull-through (ANGELO PO) CS243D
CS243S - CS243VD - CS243VS - CS370D - CS370S
CS370VD - CS370VS - CS466D - CS466S - CS466VD
CS466VS - C165D - C165S - C207D - C207S
C304D - C304S
for Pan/utensilwashing machines (ANGELO PO) LP124
LP124V - LP84 - LP84V



ANGELO PO 36H1390

ANGELO PO 36Q0970

3243401 UPPER RINSE ARM ASSEMBLY 300 mm

3243384 BUSHING FOR WASH ARM ASSEMBLY \varnothing 14x11 mm



ANGELO PO 3056440

ANGELO PO 31Z0240

1186411 O-RING 02031 EPDM
for Dishwasher (ANGELO PO)
LF50 - L45
for Dishwasher hood type (ANGELO PO)
LC100 - LC130 - LC80



ANGELO PO 3035830

ANGELO PO 3152210



ANGELO PO



Suitable for:

3243239 WASH ARM ASSEMBLY
for Dishwasher (ANGELO PO) L40 - L40S - L60
for Dishwasher hood type (ANGELO PO) L100 - L80



ANGELO PO 30Z7330

3243241 WASH ARM ASSEMBLY BOSS



ANGELO PO 33Q3380

3243242 WASH ARM ASSEMBLY SPINDLE



ANGELO PO 33Q0420

3743821 WASH ARM ASSEMBLY BOSS



ANGELO PO 33Q3700

3243481 WASH ARM ASSEMBLY ROTATING BOSS



ANGELO PO 36G1430

3186287 O-RING 0123 EPDM



ANGELO PO 3152110

Suitable for:

3243250 O-RING 03137 EPDM
for motor mixer flange



ANGELO PO 3150140

3243243 WASH ARM ASSEMBLY LOCKING NUT



ANGELO PO 33Q5070

1186805 O-RING 0115 EPDM



ANGELO PO 3152100



ANGELO PO



Suitable for:

3743049 WASH ARM ASSY
length 535 mm



ANGELO PO 36G9100

3743051 WASH IMPELLER HUB



ANGELO PO 36G9110

Suitable for:

3743050 WASH IMPELLER BUSH



ANGELO PO 36G8720

Wash jets and accessories

3743872 COMPLETE WASH JET



ANGELO PO 3FL0234

3501071 FIXED RINSE OUTLET JET
for Dishwasher (ANGELO PO) L40 - L40S - L60



ANGELO PO 33T3720

3501251 RINSE ARM ASSEMBLY JET



ANGELO PO 33T2930

3501018 RINSE JET CLAMP
for Dishwasher (ANGELO PO) AL75 - AL90



ANGELO PO 33T0270

3243584 STAINLESS STEEL RINSE JET WITH COLLAR
for Dishwasher (ANGELO PO) F60P - F60PR - F60T
F80P - F80PR



ANGELO PO 3035880

ANGELO PO 33T2740

ANGELO PO 3300330

3501062 WASH JET



ANGELO PO 33T1130



Suitable for:

ANGELO PO



Suitable for:

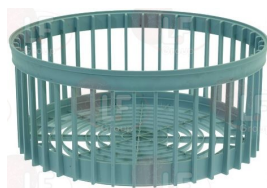
3501016 WASH JET CLAMP
for Dishwasher (ANGELO PO) AL75 - AL90



ANGELO PO 33T0280

Washing baskets and accessories

3055221 GLASS RACK \varnothing 380x170 mm
made of plastic
upper \varnothing 380 mm
lower \varnothing 320 mm





















ANGELO PO 3053810

The data herewith contained may change without notice and LF SpA cannot be held responsible for possible errors stated or resulting by the use of this document. All rights reserved. No part of this publication may be reproduced without written permission by LF SpA.



Distributing Components, Spare Parts & Accessories in original quality worldwide

-
-  **LF SpA HEADQUARTERS**
via Voltri, 80 - 47522 Cesena (FC) ITALY
Tel. +39 0547 34 11 11 - Fax +39 0547 34 11 10
www.lfircambi724.it - www.lfircambi724.mobi
info@lfircambi.it
Export Dept.: Tel. +39 0547 34 11 50 - Fax: +39 0547 34 11 55
www.lfspareparts724.com - www.lfspareparts724.mobi
export@lfspareparts.com
-  **LF SpA HOUSEHOLD COMPONENTS DIVISION**
Via Padriciano, 34149 Trieste - Italia - AREA Science Park
Tel. +39 0547 34 12 42 - Fax +39 0547 34 12 48
www.lfspareparts724.com - www.lfspareparts724.mobi
info@lfspareparts.com
-  **EPGC Sas FRANCE**
13, Rue des Forts - 59960 Neuville en Ferrain
Tel. +33 (0)3 20 25 06 21
Fax +33 (0)3 20 25 34 12
www.epgc.com
www.epgc724.mobi
epgc@epgc.com
-  **LF GmbH GERMANY**
Junkersstrasse, 3 - D-82178 Puchheim - München
Tel. +49 89 89 45 78 66
Fax +49 89 89 45 78 88
www.lfersatzteile724.de
www.lfersatzteile724.mobi
info@lfersatzteile.de
-  **LF China REPUBLIC OF CHINA**
Room 403, No.2, Huadu Mansion, Lane 422, Huanghua Rd.
Minhang Dist. - 201103 Shanghai
Tel. +86 (0)21 33 53 66 31
Fax +86 (0)21 33 53 66 32
www.lfspareparts724.com
www.lfspareparts724.mobi
china@lfspareparts.com
-  **OOO LF RUSSIAN FEDERATION**
Ul. Anatoliya Zhivova, 8 - office 1 - 123100 Moscow
Tel./Fax +7 495 725 26 53
www.lfspareparts724.ru
www.lfspareparts724.mobi
info@lfspareparts.ru
-  **LF Repuestos Horeca S.L.U. SPAIN**
Poligono Industrial Carpetania - C/Miguel Faraday, 8 - 28906 Getafe
Tel. +34 91 477 91 00
Fax +34 91 477 90 81
www.lfrepuestos-horeca724.es
www.lfrepuestos724.mobi
info@lfrepuestos.es
-  **LF SpA Cesena (IT) Swiss Branch Steinhausen SWITZERLAND**
Sennweidstrasse, 45 - CH-6312 Steinhausen
Tel. +41 (0)41 760 15 80-1
Fax +41 (0)41 760 15 85
www.lfersatzteile724.ch
www.lfersatzteilech724.mobi
info@lfersatzteile.ch
-  **LF Spare Parts Ltd. UNITED KINGDOM**
A10a Lakeside Business Park, Broadway Lane
South Cerney, Gloucestershire GL7 5XL
Tel. +44 (0)1285 86 16 25
Fax +44 (0)1285 86 39 49
www.lfspareparts724.co.uk
www.lfspareparts724.mobi
info@lfspareparts.co.uk
-
-  **AUSTRALIA AND NEW ZEALAND**
www.lfspareparts724.com
andrea.calvio@lfspareparts.com
-  **AUSTRIA**
www.lfersatzteile724.at
info@lfersatzteile.at
-  **BALKAN COUNTRIES**
www.lfspareparts724.com
matija.ramov@lfspareparts.com
-  **BALTIC COUNTRIES**
www.lfspareparts724.com
inara.silina@lfspareparts.com
-  **CENTRAL AND EASTERN EUROPE**
www.lfspareparts724.cz
jiri.kremla@lfspareparts.cz
-  **DENMARK**
www.lfspareparts724.dk
michael.leth@lfspareparts.com
-  **JAPAN**
www.lfspareparts724.jp
hiroshi.ukai@lfspareparts.jp
-  **SOUTH KOREA**
www.lfspareparts724.com
fabio.doni@lfspareparts.com
-  **TURKEY**
www.lfyedekparca724.com
basar.ergun@lfyedekparca.com
-  **USA AND CANADA**
www.lfspareparts724.us
sauro.dallaglio@lfspareparts.us
howard.truitt@lfspareparts.us