



Spare parts for:

Warewashing equipment



Suitable for:

KROMO



This catalogue is automatically generated.
Therefore, the sequence of the items might
not be always shown at best.

Updates will be issued in case of additions
and/or amendments.

*Suitable **universal spare parts** may not be included*





Suitable for:

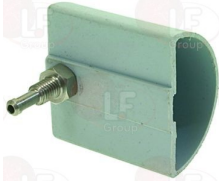
KROMO



Suitable for:

Air traps

3060065 AIR CHAMBER 55x31x56 mm
hose end fitting \varnothing 6 mm
for Dishwasher (KROMO) K35 - K37 - K40 - K70



KROMO 10911/D

KROMO 135911/D

3060070 GASKET 14x8x1.5 mm
for Dishwasher hood type (KROMO) K100



KROMO 13301

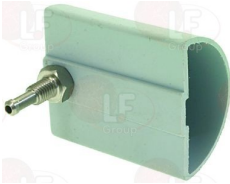
3060069 HEXAGONAL NUT M8 MEDIUM
stainless steel - UNI 5588 - DIN 934 - ISO 4032



KROMO 11702

KROMO 11708

3060066 AIR CHAMBER 55x31x65 mm
hose end fitting \varnothing 6 mm
for Dishwasher hood type (KROMO) K100



KROMO 10911/C

KROMO 135911/C

3060070 GASKET 14x8x1.5 mm
for Dishwasher hood type (KROMO) K100



KROMO 13301

3060069 HEXAGONAL NUT M8 MEDIUM
stainless steel - UNI 5588 - DIN 934 - ISO 4032



KROMO 11702

KROMO 11708

3060067 AIR CHAMBER 55x31x75 mm
hose end fitting \varnothing 6 mm
for Dishwasher (KROMO) K20 - LUX40



KROMO 10911/B

KROMO 135911/B

3060070 GASKET 14x8x1.5 mm
for Dishwasher hood type (KROMO) K100



KROMO 13301



Suitable for:

3060069 HEXAGONAL NUT M8 MEDIUM
stainless steel - UNI 5588 - DIN 934 - ISO 4032



KROMO 11702

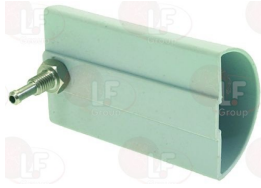
KROMO 11708

KROMO



Suitable for:

3060068 AIR CHAMBER 55x31x90 mm
hose end fitting \varnothing 6 mm
for Dishwasher (KROMO) K45 - K50 - K60 - K80
for Dishwasher hood type (KROMO) K100



KROMO 10401

KROMO 10402

KROMO 10911

KROMO 135911

3060070 GASKET 14x8x1.5 mm
for Dishwasher hood type (KROMO) K100



KROMO 13301

3060069 HEXAGONAL NUT M8 MEDIUM
stainless steel - UNI 5588 - DIN 934 - ISO 4032



KROMO 11702

KROMO 11708

Axial motors

5017087 FAN MOTOR A2D250-AA02-75 \varnothing 250 mm
230/400V 50/60 Hz 115/150W 0.2/0.24A



KROMO 3000310/A

Ball valves and accessories

3526703 BALLCOCK VALVE \varnothing 1/2"FF



KROMO 3002140



Suitable for:

KROMO



Suitable for:

Bearings

3063118 BEARING 6002 DDU NSK
external \varnothing 32mm - internal \varnothing 15mm - thickness 9mm



KROMO 10800010

3063034 LIFTING BEARING



KROMO 10800048

Boilers

3024072 BOILER \varnothing 110x370 mm
for Dishwasher (KROMO) AQUA40



KROMO 140905

3024041 BOILER \varnothing 112x320 mm



KROMO 135905

3024037 COMPLETE BOILER \varnothing 140x335 mm



KROMO 26905

KROMO 26905+26170

3024038 COMPLETE BOILER \varnothing 140x390 mm



KROMO 150905+

3024036 COMPLETE BOILER \varnothing 160x505 mm



KROMO 22002

Bushings

5013886 ROLL BUSHING
for DISHWASHER KROMO K100



KROMO 10800231



Capacitors, electrical

3068019 CAPACITOR μ F 12.5 450V 50/60Hz
operating temperature $-25+85^{\circ}\text{C}$
in compliance with EEC 93/68 and 92/31 regulations



KROMO 15081

3068024 CAPACITOR μ F 16 450V 50/60Hz
operating temperature $-25+85^{\circ}\text{C}$
in compliance with EEC 93/68 and 92/31 regulations



KROMO 15081/A

Caps

5023357 CAP CHROME-PLATED BRASS M1/8"



KROMO 12002

Castors, rollers and accessories

3391069 BASKET WHEEL
for Pan/utensilwashing machines (KROMO) HOOD130EL



KROMO 89919

3346138 BELT WHEEL \varnothing 29.5 mm



KROMO 3060001

5018135 ROLL ECCENTRIC CONVEYOR \varnothing 30x27x12 mm



KROMO 3003012

3346144 SHUTTER ROLLER \varnothing 34x12 mm



KROMO 10800244

3346011 TROLLEY SPACER ROLLER
 \varnothing 24x22 mm
for Dishwasher pull-through (KROMO) - Series AX



KROMO 3003026



Suitable for:

KROMO



Suitable for:

Clamps

3449453 HOSE CLAMP 25-40
for pipes $\varnothing 25 \div 40$ mm
made of stainless steel AISI 304
height 9 mm and screw E7
suitable for food industry



KROMO 11806

3449456 HOSE CLAMP 50-70
for pipes $\varnothing 50 \div 70$ mm
made of stainless steel AISI 304
height 9 mm and screw E7
suitable for food industry



KROMO 11824

3449457 HOSE CLAMP 60-80
for pipes $\varnothing 60 \div 80$ mm
made of stainless steel AISI 304
height 9 mm and screw E7
suitable for food industry



KROMO 2902491

3449458 HOSE CLAMP 80-100
for pipes $\varnothing 80 \div 100$ mm
made of stainless steel AISI 304
height 9 mm and screw E7
suitable for food industry



KROMO 11837

Contact thermostats

3444283 CONTACT THERMOSTAT +110°C
boiler security
with manual reset - 10A 250V



KROMO 15550

3444214 CONTACT THERMOSTAT 55°C
15A 250V
for Dishwasher (KROMO) LUX40



KROMO 15551

Contactors

3397402 AEG MOTOR OVERLOAD CUTOUT Mbs25 50/60Hz
1.1Kw / 1.6÷2.5A
3 normally open contacts



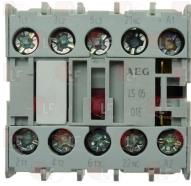
KROMO 2000393

3397405 AEG MOTOR OVERLOAD CUTOUT Mbs25 50/60Hz
1.5Kw / 2.5÷4A
3 normally open contacts



KROMO 2000394

3351209 CONTACTOR AEG LS05 9A 230V 4Kw
 coil 230V 50/60Hz
 3 normally open contacts
 1 normally closed auxiliary contact



KROMO 15086/B

Controllers and changeover switches

3322148 CONTROLLER 11803F1 3 CAMS
 120 seconds cycle
 230V 50/60Hz



KROMO 10708

3322232 CONTROLLER 11803F1 3 CAMS
 18 minutes cycle
 230V 50/60Hz
 without pin
 for regeneration
 for Dishwasher (KROMO) K40 - K70 - K90
 for Dishwasher hood type (KROMO) K100



KROMO 16064/A

3322178 CONTROLLER 11804F1 4 CAMS
 120 seconds cycle
 230V 50/60Hz
 with thermostop



KROMO 10708/T

3322346 CONTROLLER 11804F1 4 CAMS
 90 seconds cycle
 230V 50Hz
 with thermostop



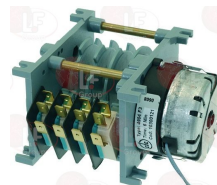
KROMO 10708/N

3322231 CONTROLLER 4904F3 4 CAMS
 1st cycle 60 seconds
 2nd cycle 90 seconds
 3rd cycle 120 seconds
 230V 50Hz
 without pin
 for Dishwasher (KROMO)
 KD100
 for Dishwasher hood type (KROMO)
 K100 - K120



KROMO 10300117

3322265 CONTROLLER 4904F3 4 CAMS
 1st cycle 60 seconds
 2nd cycle 120 seconds
 3rd cycle 180 seconds
 230V 50/60Hz
 anticlockwise rotation



KROMO 10300121



Suitable for:

KROMO



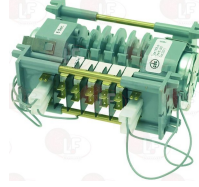
3322195 CONTROLLER 600/627/5261 2 CAMS
120 seconds cycle
230V 50/60Hz
for Dishwasher (KROMO) K35 - K37 - K40



KROMO 10708

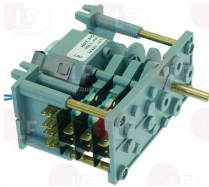
KROMO 10708/L

Suitable for:
3322172 CONTROLLER 7805DV 5 CAMS
1st cycle 120 seconds
2nd cycle 240 seconds
230V 50/60Hz
without pin
for Dishwasher (KROMO) K90



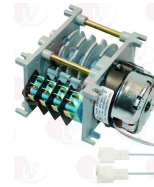
KROMO 22011

3322271 CONTROLLER 7903F1 3 CAMS
5 minutes cycle
230V 50/60Hz
clockwise rotation
D-shaped pin \varnothing 6x4.6 mm



KROMO 22001

5018216 TIMER 4903F3 4 CAMS
5'-230V 50/60Hz cycle



KROMO 10300122

Curtains

3456020 ROD FOR CURTAIN



KROMO 3009109

3443321 SIDE CURTAIN 545x585 mm
for Dishwasher pull-through (KROMO)
K5400



KROMO 3004050

3443322 CENTRAL CURTAIN 615x495 mm



KROMO 3004051

3443326 CURTAIN ROD 600 mm



KROMO 3004053



Door catches

- 3398036 DOOR CATCH WITH MICROSWITCH**
for Dishwasher (KROMO)
K35 - K37 - K40
for Dishwasher (KROMO) AQUA35



KROMO 150402

- 3398037 DOOR RETAINER**
for Dishwasher (KROMO) AQUA35



KROMO 150402/D

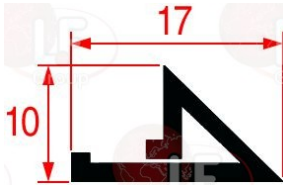
- 3398035 NICKEL PLATED DOOR CATCH \varnothing 13x24 mm**
for DISHWASHER all models
for Dishwasher (KROMO) K45 - K50 - K80



KROMO 10775

Door gaskets for dishwashers

- 7100611 DOOR GASKET SILICONE 1000 mm**
per LAVASTOVIGLIE DHIR DS50
profile dimensions 17x10 mm



KROMO 135205

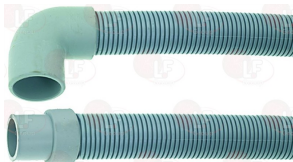
- 3187013 DOOR GASKET 1500 mm**
profile dimensions 24x10x6 mm



KROMO 560021

Drain hoses

- 3450026 DRAIN PIPE \varnothing 28x1500 mm**
elbow sleeve internal \varnothing 28 mm external \varnothing 33 mm
straight sleeve internal \varnothing 24 mm external \varnothing 28 mm
max temperature 90°C



KROMO 15721

- 3450028 DRAIN PIPE \varnothing 29x1500 mm**
muffs internal \varnothing 24 and 28 mm
max temperature 90°C



KROMO 10200112

KROMO 10727



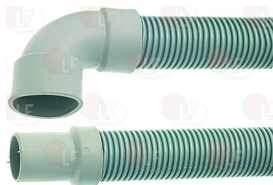
Suitable for:

KROMO



Suitable for:

3450120 DRAIN PIPE \varnothing 38x1500 mm
elbow sleeve internal \varnothing 42 mm
straight sleeve internal \varnothing 31 mm



KROMO 10729

Drain plugs

5050428 OVERFLOW PIPE \varnothing 26x175 mm
for Glasswasher/Cupwasher (KROMO) K35
for Dishwasher (KROMO) K35



KROMO 25004

3743629 OVERFLOW PIPE \varnothing 26x210 mm



KROMO 3004089

3448137 OVERFLOW PIPE \varnothing 28x106 mm
in plastic
for Dishwasher (KROMO) K40



KROMO 16052

3316040 ELBOW CONNECTOR \varnothing 1"x30 mm
for Dishwasher (KROMO) K35 - K37 - K40 - K70



KROMO 10701

3316041 GASKET 1" \varnothing 44x32x3 mm
for Dishwasher (KROMO) K35 - K37 - K40 - K70



KROMO 13305

3316042 STAINLESS STEEL NUT \varnothing 1"
for Dishwasher (KROMO) K35 - K37 - K40 - K70



KROMO 11701/A

3448138 OVERFLOW PIPE \varnothing 28x121 mm
in plastic



KROMO 150320

3316040 ELBOW CONNECTOR \varnothing 1"x30 mm
for Dishwasher (KROMO) K35 - K37 - K40 - K70



KROMO 10701



Suitable for:

3316041 GASKET 1" ø 44x32x3 mm
for Dishwasher (KROMO) K35 - K37 - K40 - K70



KROMO 13305

3448136 OVERFLOW PIPE ø 28x132 mm
in plastic
for Dishwasher (KROMO) K70



KROMO 15126

3316041 GASKET 1" ø 44x32x3 mm
for Dishwasher (KROMO) K35 - K37 - K40 - K70



KROMO 13305

3448135 OVERFLOW PIPE ø 28x140 mm
in plastic



KROMO 10300005

KROMO 10725

3316041 GASKET 1" ø 44x32x3 mm
for Dishwasher (KROMO) K35 - K37 - K40 - K70



KROMO 13305

KROMO



Suitable for:

3316042 STAINLESS STEEL NUT ø 1"
for Dishwasher (KROMO) K35 - K37 - K40 - K70



KROMO 11701/A

3316040 ELBOW CONNECTOR ø 1"x30 mm
for Dishwasher (KROMO) K35 - K37 - K40 - K70



KROMO 10701

3316042 STAINLESS STEEL NUT ø 1"
for Dishwasher (KROMO) K35 - K37 - K40 - K70



KROMO 11701/A

3316040 ELBOW CONNECTOR ø 1"x30 mm
for Dishwasher (KROMO) K35 - K37 - K40 - K70



KROMO 10701

3316042 STAINLESS STEEL NUT ø 1"
for Dishwasher (KROMO) K35 - K37 - K40 - K70



KROMO 11701/A



Suitable for:

KROMO



3448139 OVERFLOW PIPE \varnothing 28x96 mm
in plastic
for Dishwasher (KROMO) K35 - K37



KROMO 135251

KROMO 135252

3316041 GASKET 1" \varnothing 44x32x3 mm
for Dishwasher (KROMO) K35 - K37 - K40 - K70



KROMO 13305

Suitable for:

3316040 ELBOW CONNECTOR \varnothing 1"x30 mm
for Dishwasher (KROMO) K35 - K37 - K40 - K70



KROMO 10701

3316042 STAINLESS STEEL NUT \varnothing 1"
for Dishwasher (KROMO) K35 - K37 - K40 - K70



KROMO 11701/A

3448168 OVERFLOW PIPE \varnothing 40x187 mm
made of plastic
for Dishwasher (KROMO) K45 - K50 - K80



KROMO 500618

3186231 LIP GASKET DEM40 EPDM
 \varnothing 40x30x7 mm
for Dishwasher (KROMO) K60 - K70 - LUX40



KROMO 13021

3448206 OVERFLOW PIPE \varnothing 40x200 mm
in plastic
for Dishwasher (KROMO) LUX40



KROMO 540033

3186231 LIP GASKET DEM40 EPDM
 \varnothing 40x30x7 mm
for Dishwasher (KROMO) K60 - K70 - LUX40



KROMO 13021

3448199 OVERFLOW PIPE \varnothing 40x210 mm
made of plastic for drain pump



KROMO 560020

3186231 LIP GASKET DEM40 EPDM
 \varnothing 40x30x7 mm
for Dishwasher (KROMO) K60 - K70 - LUX40



KROMO 13021

Suitable for:

3448207 OVERFLOW PIPE \varnothing 40x210 mm
in plastic
for Dishwasher (KROMO) K60 - K90
for Dishwasher hood type (KROMO) HOOD110S



KROMO 500619

Suitable for:

3186231 LIP GASKET DEM40 EPDM
 \varnothing 40x30x7 mm
for Dishwasher (KROMO) K60 - K70 - LUX40



KROMO 13021

3448231 OVERFLOW PIPE \varnothing 40x400 mm
for Dishwasher (KROMO) DW091



KROMO 11600012

KROMO 11600102

3186231 LIP GASKET DEM40 EPDM
 \varnothing 40x30x7 mm
for Dishwasher (KROMO) K60 - K70 - LUX40



KROMO 13021

3448296 OVERFLOW PIPE \varnothing 45x155 mm
s/steel
for Dishwasher hood type (KROMO) K100



KROMO 75250

KROMO 75752

3316045 COMPLETE DRAIN ASSEMBLY \varnothing 2"x1"1/4
fitting \varnothing 2"
outlet \varnothing 1"1/4
complete with nut and gasket
for Dishwasher hood type (KROMO) K100



KROMO 10200113

KROMO 10200173

KROMO 10200113+

KROMO 10200113+114+173

3316072 ELBOW STEM FOR OUTLET \varnothing 1"1/4
complete with gasket
for Dishwasher hood type (KROMO) K100



KROMO 15613

3316155 GASKET 75x58x3 mm
for Dishwasher hood type (KROMO) K100



KROMO 10200173/A

KROMO 10600013

3316153 NUT FOR DRAIN ASSEMBLY
threaded hole int. \varnothing 60 mm



KROMO 10200114



Suitable for:

KROMO



Suitable for:

3448305 OVERFLOW PIPE \varnothing 45x170 mm
basis \varnothing external 42 mm



KROMO 22251

3448141 OVERFLOW PIPE \varnothing 45x200 mm
in stainless steel



KROMO 10600019

3316045 COMPLETE DRAIN ASSEMBLY \varnothing 2"x1"1/4
fitting \varnothing 2"
outlet \varnothing 1"1/4
complete with nut and gasket
for Dishwasher hood type (KROMO) K100



KROMO 10200113

KROMO 10200113+

KROMO 10200113+114+173

KROMO 10200173

3316072 ELBOW STEM FOR OUTLET \varnothing 1"1/4
complete with gasket
for Dishwasher hood type (KROMO) K100



KROMO 15613

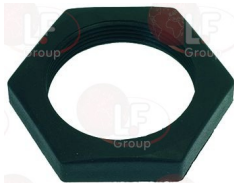
3316155 GASKET 75x58x3 mm
for Dishwasher hood type (KROMO) K100



KROMO 10200173/A

KROMO 10600013

3316153 NUT FOR DRAIN ASSEMBLY
threaded hole int. \varnothing 60 mm



KROMO 10200114

3448295 OVERFLOW PIPE \varnothing 45x463 mm
for wash tank
for Dishwasher (KROMO)
since 1/01/99



KROMO 3004101

3448297 OVERFLOW CAP



KROMO 88105

Suitable for:

3448294 OVERFLOW PIPE \varnothing 45x483 mm
for pre-wash tank
for Dishwasher (KROMO)
since 1/01/99



KROMO 3004100

Suitable for:

3448297 OVERFLOW CAP



KROMO 88105

3448293 OVERFLOW PIPE \varnothing 45x580 mm
for Pan/utensilwashing machines (KROMO)
Series KP



KROMO 89000

3186579 GASKET FLANGE-SHAPED \varnothing 96x56x13 mm
for Dishwasher pull-through (KROMO)
Series KP



KROMO 11600002

5017671 OVERFLOW PIPE END \varnothing 40x52 mm
interno \varnothing 32 mm



KROMO 11600019

Drain pumps

3122865 DRAIN ELECTRIC PUMP PLASET 59491
22W 220/240V 50HZ
inlet \varnothing external 30 mm
exit \varnothing external 24 mm
for Dishwasher (KROMO) DS50EL



KROMO 15101

3122455 DRAIN ELECTRIC PUMP 25W 230V 50Hz
inlet external \varnothing 22 mm - outlet external \varnothing 30 mm
for 29 S



KROMO 15101/A

KROMO 15101/A+15101/F

3122413 HOUSING FOR PUMP
inlet external \varnothing 22 mm - outlet external \varnothing 30 mm
for Dishwasher (KROMO)



KROMO 15101/F



Suitable for:

KROMO



Suitable for:

Electronic printed-circuit boards

3319684 COMPLETE PUSH BUTTON PANEL BOARD
with cable length 1500 mm
for Pan/utensilwashing machines (KROMO) KP402E



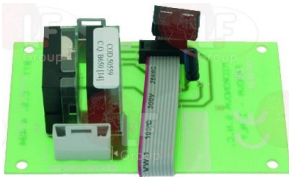
KROMO 50570/D

3319687 COMPLETE PUSH BUTTON PANEL BOARD
with cable length 750 mm
for Pan/utensilwashing machines (KROMO) KP151E



KROMO 50570/C

3322333 ELECTRONIC TIMER BOARD



KROMO DW50559

KROMO 50559

3322334 ELECTRONIC TIMER BOARD
for Dishwasher (KROMO)
DW029E
LUX40EL



KROMO 50580

3319661 DIAPHRAGM PUSH BUTTON PANEL "ELITE"
for Dishwasher (KROMO)
LUX85ELETTRONICA
for Dishwasher (KROMO)
DW029E
LUX60EL



KROMO 50581

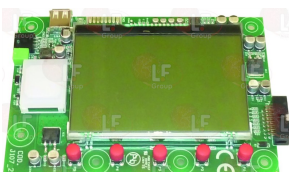
3050156 MULTIWIRE STRIP 1000 mm
for Dishwasher (KROMO) DW029E



KROMO 5058

KROMO 50589

5059269 KEYBOARD WITH DISPLAY VERSION 09
size 158x112 mm



KROMO 50650

7100296 CABLE FLAT 16-POLE 1000 m m



KROMO 50651



Suitable for:

3390311 MOTHERBOARD WITHOUT CHIP
for Pan/utensilwashing machines (KROMO)
KP151



KROMO DW50569

KROMO 50569

Suitable for:

3399131 COMPLETE PUSH BUTTON PANEL BOARD
with cable length 750 mm
for Dishwasher hood type (KROMO)
HOOD110 - HOOD130
for Pan/utensilwashing machines (KROMO) KP400



KROMO 50570

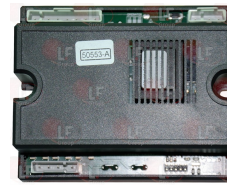
KROMO 50570D

7106424 SPACER FOR CIRCUIT BOARDS



KROMO 50561

3390313 TIMER BOARD 50"-120"-180"
for Dishwasher hood type (KROMO)
HOOD110
for Dishwasher hood type (KROMO) DW014



KROMO DX50553

KROMO 50553/A

Feet

3313119 ADJUSTABLE FOOT



KROMO 10850

7101281 FOOT \varnothing 17x50 mm



KROMO 10851

3313118 FOOT \varnothing 37 PIN M10x25 mm



KROMO 10786

KROMO 10786+11711

3313005 STAINLESS STEEL FOOT \varnothing 2" x h 125 mm
with fixed screw M12x25 mm



KROMO 15116

Filters

3160236 INLET FILTER
plastic made - external \varnothing 155 mm - height 70 mm
for Dishwasher (KROMO) K45 - K50 - K80 - K90
for Dishwasher hood type (KROMO) HOOD130



KROMO 500616

3186228 FLAT GASKET EPDM \varnothing 95x75x3 mm
for Dishwasher (KROMO) K45 - K50 - K80 - K90



KROMO 80208



Suitable for:

3316154 INLET OUTLET UNIT
for Dishwasher (KROMO) K90



KROMO 500603

KROMO



Suitable for:

3160506 INTERNAL FILTER WITH SCREEN
for Dishwasher (KROMO) AQUA50



KROMO 500600

5062214 PUMP INLET FILTER \varnothing 118 mm



KROMO 25003

5053762 RING NUT FILTER SUPPORT
flange \varnothing 82 mm



KROMO 25002

3160155 PUMP SUCTION FILTER \varnothing 50x85 mm



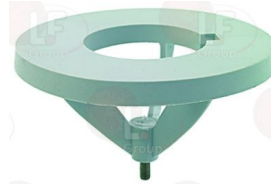
KROMO 10914

3160157 STAINLESS STEEL FILTER \varnothing 105x50 mm



KROMO 16050

3160172 WASH PUMP FILTER BASE - HOLE \varnothing 50 mm



KROMO 16051/A

3160159 STAINLESS STEEL FILTER \varnothing 195x55 mm
for Dishwasher hood type (KROMO) K100



KROMO 15911

KROMO 22218

3160166 TANK PLASTIC FILTER \varnothing 95x64 mm
new versions
for Dishwasher (KROMO) K35 - K37 - K40



KROMO 540002

3160167 DRAIN RING NUT \varnothing 32 mm
with extension
for Dishwasher (KROMO) K35 - K37 - K40



KROMO 540000

KROMO 540000/A



Suitable for:

3160168 DRAIN RING NUT \varnothing 32 mm
without extension
for Dishwasher (KROMO) K35 - K37 - K40



KROMO 540001

KROMO 540001/A

3316042 STAINLESS STEEL NUT \varnothing 1"
for Dishwasher (KROMO) K35 - K37 - K40 - K70



KROMO 11701/A

KROMO



Suitable for:

3316041 GASKET 1" \varnothing 44x32x3 mm
for Dishwasher (KROMO) K35 - K37 - K40 - K70



KROMO 13305

3160169 WASH TANK FILTER \varnothing 135x60 mm



KROMO 500620

3160171 DRAIN MANIFOLD
outlet \varnothing 58-29 mm
for Dishwasher (KROMO) K45 - K50 - K80 - K90



KROMO 500606

3186228 FLAT GASKET EPDM \varnothing 95x75x3 mm
for Dishwasher (KROMO) K45 - K50 - K80 - K90



KROMO 80208

3186229 ASPIRATION ASSEMBLY RING



KROMO 500601

3160170 FILTER BASE \varnothing 74 mm
for Dishwasher (KROMO) K45 - K50 - K80 - K90
for Dishwasher hood type (KROMO) HOOD130



KROMO 500615

KROMO 500615/A

3160506 INTERNAL FILTER WITH SCREEN
for Dishwasher (KROMO) AQUA50



KROMO 500600



Suitable for:

3160507 RING NUT WITH FILTER COUPLING
for Dishwasher (KROMO) AQUA50



KROMO 500607

KROMO

Suitable for:



Fittings

1349158 FITTING \varnothing 3/4"M-1/2"F REDUCED



KROMO 12024

3349346 NICHEL-PL.HOSE-END FITTING \varnothing 1/4"M \varnothing 12



KROMO 12005

3349347 NICHEL-PL.HOSE-END FITTING \varnothing 3/8"M \varnothing 12



KROMO 10221311

3349337 NICHEL-PL.T-FITTING \varnothing 1/4"F-1/4"F-1/4"F



KROMO 12008

3349324 NICHEL-PLATED FITTING \varnothing 1/4"M-1/2"M



KROMO 12033

3349330 NICHEL-PLATED FITTING \varnothing 1/4"M-1/8"F



KROMO 12032

Gaskets and seals

3786704 GASKET FOR WASH HOSE
 \varnothing 51x34x15 mm



KROMO 76081

3786042 PIPE SLIDING GASKET



KROMO 13304



Gears

5018162 CONVEYOR SHAFT LONG WITH ECCENTRIC
total length 250 mm



KROMO 3003116

Guides

3391017 HOOD SLIDE 600 mm



KROMO DW75304

KROMO 75304

3053587 HOOD SLIDE-TRAY 700 mm



KROMO DW76080

KROMO 76080

5031160 PROFILE FOR DOOR SLIDE-TRAY 760 mm



KROMO 3004026

3189042 SLIDEWAY FOR HOOD LH 650x25 mm



KROMO 11600029

3704004 BUSHING FOR SLIDE RH/LH



KROMO 11600016

KROMO 11600017

KROMO 11600055

3189041 SLIDEWAY FOR HOOD RH
sizes 695x25 mm



KROMO 11600028

3704004 BUSHING FOR SLIDE RH/LH



KROMO 11600016

KROMO 11600017

KROMO 11600055



Suitable for:

KROMO



Suitable for:

Handles

3242380 DOOR HANDLE 257 mm
for KROMO DISHWASHER K45
for Dishwasher (KROMO) K45



KROMO 135240

3242377 HANDLE HEAD
for series K



KROMO 135241

3242378 PLASTIC HANDLE 547 mm



KROMO 560550

Heating elements

3455418 BRACKET FOR HEATING ELEMENT



KROMO 11813

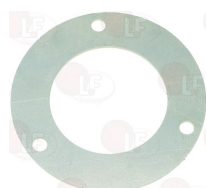
KROMO 16045

5015994 COVER FOR HEATING ELEMENT /PLASTIC
ø 130 mm - height 40 mm
for Dishwasher hood type (KROMO) HOOD110



KROMO 75311

3455308 FLANGE FOR HEATING ELEMENT
internal ø 57 mm



KROMO 30001024

3455310 HEATING ELEMENT BOILER 14000/15240W 230/
immersed depth 480 mm
flange external ø 72 mm - with bulbholder sheathin
complete with gasket OR ø 67 mm (3186014)
nut on request (3528233) and washer (3528238)



KROMO 30001011/B

Suitable for:

Suitable for:

3355475 HEATING ELEMENT BOILER 2500W 230V
 immersed depth 195 mm
 flange external \varnothing 63 mm
 with bulbholder sheathing \varnothing 7 mm
 complete with gasket OR \varnothing 58 mm (3186013)
 for Dishwasher (KROMO) K45

3186013 O-RING GASKET 06187 EPDM \varnothing 58 mm



KROMO 16036/A

KROMO 13005

3455323 HEATING ELEMENT BOILER 2800/3050W 230/24
 immersed depth 375 mm
 flange external \varnothing 63 mm - with bulbholder sheathin
 complete with gasket OR \varnothing 58 mm (3186013)

3755036 HEATING ELEMENT BOILER 2800W 230V
 immersed depth 300 mm
 flange external \varnothing 55 mm
 with bulbholder sheathing \varnothing 7 mm
 complete with gasket OR \varnothing 48 mm (3186001)



KROMO 15089/D

KROMO 18206/D

3355477 HEATING ELEMENT BOILER 3000W 220/380V
 immersed depth 265 mm
 flange external \varnothing 63 mm
 with bulbholder sheathing \varnothing 6 mm
 complete with gasket OR \varnothing 58 mm (3186013)
 for Dishwasher (KROMO) K50 - K60

3186013 O-RING GASKET 06187 EPDM \varnothing 58 mm



KROMO 15046

KROMO 13005

3455305 HEATING ELEMENT BOILER 3000W 230V
 immersed depth 195 mm
 flange ext. \varnothing 63 mm with distance between holes 72
 complete with gasket OR \varnothing 58 mm (3186013)

3755038 HEATING ELEMENT BOILER 4000W 230V
 immersed depth 300 mm
 flange external \varnothing 55 mm
 complete with gasket OR \varnothing 48 mm (3186001)
 for Dishwasher (KROMO) K40LUX



KROMO

KROMO 10300011

KROMO 18215



Suitable for:

Suitable for:

3355478 HEATING ELEMENT BOILER 4500W 220/380V
 immersed depth 370 mm
 flange external \varnothing 63 mm
 with bulbholder sheathing \varnothing 7 mm
 complete with gasket OR \varnothing 58 mm (3186013)
 for Dishwasher (KROMO) K50 - K60 - K70 - K80
 for Dishwasher hood type (KROMO) K120

3186013 O-RING GASKET 06187 EPDM \varnothing 58 mm



KROMO 15089

KROMO 13005

3455313 HEATING ELEMENT BOILER 6000/6530W 230/24
 immersed depth 375 mm
 flange external \varnothing 63 mm - with bulbholder sheathin
 complete with gasket OR \varnothing 58 mm (3186013)

3455306 HEATING ELEMENT FINNED 2000/2180W 230/24
 length 390 mm - length of finned part 360 mm
 width 100 mm - fittings \varnothing 3/8"



KROMO 15089/E

KROMO 2000359

3355479 HEATING ELEMENT FOR BOILER 6000W 220/380
 immersed length 460 mm
 flange external \varnothing 72 mm
 with probe receptacle \varnothing 7 mm
 complete with gasket OR \varnothing 67 mm (3186014)
 nut (3528232) and washer (3528238) on request
 for Dishwasher (KROMO) K90
 for Dishwasher hood type (KROMO) K100
 for Pan/utensilwashing machines (KROMO) KP302E
 for Pan/utensilwashing machines (KROMO) KP302E

3186014 O-RING GASKET 06225 EPDM \varnothing 67 mm



KROMO 30001010

KROMO 13015

KROMO 13020

3355480 HEATING ELEMENT FOR BOILER 9000W 220/380
 immersed length 460 mm
 flange external \varnothing 72 mm
 with probe receptacle \varnothing 7 mm
 complete with gasket OR \varnothing 67 mm (3186014)
 nut (3528232) and washer (3528238) on request
 for Dishwasher hood type (KROMO) K100 - K120

3186014 O-RING GASKET 06225 EPDM \varnothing 67 mm



KROMO 30001011

KROMO 13015

KROMO 13020

Suitable for:

3755037 HEATING ELEMENT TANK 1100W 230V
 immersed depth 200 mm
 width 38 mm - height 30 mm
 flange 51x28 mm
 for Dishwasher (KROMO) K40LUX



KROMO 540401

Suitable for:

3355482 HEATING ELEMENT TANK 1800W 230V
 immersed depth 190 mm
 width 42 mm - flange 61x26 mm



KROMO 17201

3355483 HEATING ELEMENT TANK 1850W 230V
 immersed depth 255 mm
 width 42 mm - flange 61x26 mm
 complete with gasket



KROMO 16035/A

KROMO 16035A

3355484 HEATING ELEMENT TANK 2700W 230/400V
 immersed depth 255 mm
 height 25 mm - flange external \varnothing 63 mm
 complete with gasket OR \varnothing 58 mm (3186013)
 for Dishwasher (KROMO) K70
 for Dishwasher hood type (KROMO) DW115E - K100



KROMO 15047/A

3186013 O-RING GASKET 06187 EPDM \varnothing 58 mm



KROMO 13005

3355485 HEATING ELEMENT TANK 2700W 230V
 immersed depth 350 mm
 width 42 mm - flange 61x26 mm
 complete with gasket
 for Dishwasher (KROMO) GS45 - K45 - K50 - K60
 K80



KROMO 150047

3355168 HEATING ELEMENT TANK 5700W 220/240V
 immersed length 310 mm
 width 85 mm - fitting \varnothing 1"1/4 (43 mm)
 complete with gasket \varnothing 54 mm (3186010)



KROMO 10300022



Suitable for:

3755952 HEATING ELEMENT 12000W 220V
 immersed depth 460 mm
 flange external \varnothing 72 mm - with bulbholder sheathin
 complete with gasket OR \varnothing 67 mm (3186014)



KROMO 30001011/A

3355476 HEATING ELEMENT 2400W 230V
 for boiler and wash tank
 immersed depth 265 mm
 flange external \varnothing 55 mm
 with bulbholder sheathing \varnothing 7 mm
 complete with gasket OR \varnothing 48 mm (3186001)



KROMO 18206

3355106 HEATING ELEMENT 6000W 230/400V
 for boiler and wash tank
 immersed length 350 mm
 ext. \varnothing flange 72 mm - with bulb-sheathing
 with O-ring gasket \varnothing 67 mm (3186014)
 nut (3528232) and washer (3528238) on request



KROMO 3003977

Suitable for:

3355481 HEATING ELEMENT 2000W 240V
 immersed length 290 mm
 width 42 mm - flange 61x26 mm



KROMO 10714

3186001 O-RING GASKET 06150 EPDM



KROMO 13010

3186014 O-RING GASKET 06225 EPDM \varnothing 67 mm



KROMO 13015

KROMO 13020

Hinges, catches and accessories

5025041 BRACE DOOR RH/LH
 length 188 mm



KROMO 250006

KROMO 250007

KROMO 250041

5026690 PLATE BRACE VERSION 05



KROMO 250042

Suitable for:

Suitable for:

3053593 COVER TIE ROD ROLLER
 internal \varnothing 11 mm
 for Dishwasher hood type (KROMO) HOOD130EL



KROMO 11600014

3250036 DOOR RETURN SPRING 130 mm



KROMO 10700

3704005 BRASS BUSHING



KROMO 11835

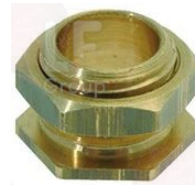
KROMO 11835/A

3250037 DOOR RETURN SPRING 138 mm
 for Dishwasher (KROMO) K70



KROMO 10700/A

3704005 BRASS BUSHING



KROMO 11835

KROMO 11835/A

3053211 DOOR ROD
 for Dishwasher (KROMO) K70



KROMO 15009

3053326 STAINLESS STEEL DOOR ROD 545 mm
 for Dishwasher (KROMO) K70



KROMO 26009

3250035 DOOR RETURN SPRING 140 mm



KROMO 10700/B

3250034 DOOR RETURN SPRING 270 mm
 for Dishwasher (KROMO) K40 - K60 - LUX40



KROMO 560003

3053338 DOOR ROD SLIDEWAY



KROMO 150401

3053315 DOOR ROD STAINLESS STEEL 490 mm



KROMO 16046



Suitable for:

KROMO



3053472 DOOR TIE ROD



KROMO 150221/A

Suitable for:

3053339 HINGE FOR DOOR LH



KROMO 150211

3053123 HINGE FOR DOOR RH



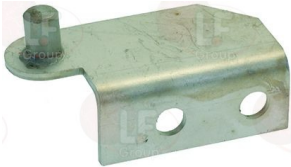
KROMO 540624

3053121 RIGHTHAND HINGE ROD BUSH



KROMO 540035

3053323 HINGE FOR DOOR RH



KROMO 150200

KROMO 150210

3053474 HINGE LH
for mod. GS 35-37



KROMO 135221/A

3053471 HINGE RH



KROMO 550908

3053532 HINGE DOOR RETAINER K50



KROMO 135222

3053529 HINGE LH



KROMO 550909

3053473 HINGE RH



KROMO 135221

Suitable for:

3053124 LEFTHAND DOOR HINGE



KROMO 540629

Suitable for:

3053122 LEFTHAND HINGE ROD BUSH



KROMO 540036

3053337 LH RUBBER PIECE FOR DOOR HINGE



KROMO 560007

3053336 RH RUBBER PIECE FOR DOOR HINGE



KROMO 560006

3743631 RH/LH DOOR ROD



KROMO 150221

3053588 ROD FOR DOOR STAINLESS STEEL \varnothing 8x430 mm



KROMO 18136

Hose-end fittings

3243390 ELBOW FITTING \varnothing 3/8" M
 hose-end fitting \varnothing 12 mm
 for Dishwasher (KROMO) K35 - K37 - K40



KROMO 12030

3243391 GASKET FLAT \varnothing 10x5x1 mm



KROMO 13303

3315106 3-WAY HOSE END RUBBER FITTING \varnothing 10 mm



KROMO 540090

3315107 3-WAYS HOSE END RUBBER FITTING \varnothing 12



KROMO 540091

3315026 4-WAY FITTING



KROMO 15151



Suitable for:

KROMO



Suitable for:

Hydraulic piping

3450736 PRESSURE SWITCH PIPE \varnothing 4x8.5 mm - 10 m
made of black rubber
external \varnothing 8.5 mm
internal \varnothing 4 mm



KROMO 14508

KROMO 14508_10MT

3450651 RUBBER PIPE 110°C. \varnothing 10x16 mm - 40 m
temperature $-30^{\circ}+110^{\circ}\text{C}$
operating pressure 10 bar
burst pressure 40 bar
non-toxic rubber hose
external \varnothing 16 mm
internal \varnothing 10 mm
40-m rolls
for 5-m rolls see 3450621



KROMO 2907352

3450621 RUBBER PIPE 110°C. \varnothing 10x16 mm - 5 m
temperature $-30^{\circ}+110^{\circ}\text{C}$
operating pressure 10 bar
burst pressure 40 bar
non-toxic rubber hose
external \varnothing 16 mm
internal \varnothing 10 mm
for 40 m rolls see 3450651



KROMO 2907352

Indicator lights

3221091 GREEN INDICATOR LAMP 230V
head \varnothing 7 mm - hole \varnothing 6 mm
with cable 250 mm



KROMO 10711

3221132 GREEN INDICATOR LAMP 230V
head \varnothing 13.5 mm - hole \varnothing 10 mm - 120°C
universal application



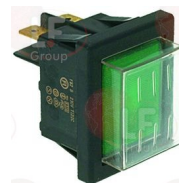
KROMO 10711/B

3221082 GREEN INDICATOR LAMP 24V
hole \varnothing 11.5 mm
head \varnothing 18 mm



KROMO 10711/C

3221093 INDICATOR LAMP GREEN 230V
mounting hole 30x22 mm



KROMO 15051

Suitable for:

Suitable for:

9014092 LAMP Ba9s 2W 24V
 dimensions \varnothing 10x28 mm
 for PUSH-BUTTON PANEL



KROMO 3002068

3221167 RED LAMP RECEPTACLE
 head \varnothing 15 mm - hole \varnothing 10 mm
 for Pan/utensilwashing machines (KROMO)



KROMO 15826/C

3221162 GREEN LAMP RECEPTACLE
 head \varnothing 14.5 mm - hole \varnothing 10 mm



KROMO 15826/B

Inlet hoses

3449001 INLET ELBOW HOSE \varnothing 3/4" FF 1500 mm
 thermoplastic hose \varnothing 10x16 mm
 nylon fittings \varnothing 3/4" with gaskets
 max temperature 90°C
 max pressure 10 bar



KROMO 10726

Interference suppression filters

3160479 INTERFERENCE SUP. FILTER D.E.M.FC701Y2FL
 0.47 μ F



KROMO 15149



Suitable for:

KROMO



Suitable for:

Ironmongery (screws,nuts,washers)

5020972 CYLINDER HEAD SCREW M4x25
stainless steel - cross recessed
UNI 7687 - DIN 7985 - ISO 7045



KROMO 11105

1528631 CYLINDER HEAD SCREW M4x8
stainless steel - cross recessed
UNI 7687 - DIN 7985 - ISO 7045



KROMO 11121

5022074 HEXAGON HEAD SCREW M8x40
stainless steel - UNI 5739 - DIN 933 - ISO 4017



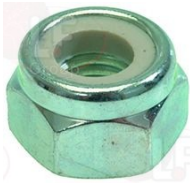
KROMO 11165

3528215 HEXAGONAL NUT LOW M4
st./steel - UNI 5589 - DIN 936 - ISO 4035



KROMO 11703

1348041 HEXAGONAL SELF-LOCKING NUT M8
stainless steel - with built in nylon ring
UNI 7473 - DIN 982 - ISO 7040



KROMO 11718

5035625 SCREW WITH HEXAGON HEAD M8x35
stainless steel - UNI 5739 - DIN 933 - ISO 4017



KROMO 11110

5013975 SCREWS NO HEAD WITH HEXAGON SOCKET M5x20
stainless steel - cone-shaped edge
UNI 5927 - DIN 914 - ISO 4027



KROMO 11501

5024124 SPIRAL SPRING WASHER M5
internal/external \varnothing 5.3/8.9 mm - thickness 2.4 mm
stainless steel - UNI 1751 - DIN 127 B



KROMO 11608

Knobs

3241863 BLACK KNOB \varnothing 70 mm
D shaft hole 6x4.6 mm



KROMO

3241860 BLACK KNOB \varnothing 70 mm 0-1-0-1
D shaft hole 6x4.6 mm



KROMO



Suitable for:

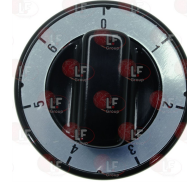
3241861 BLACK KNOB \varnothing 70 mm 0-1-2-3
D shaft hole 6x4.6 mm



KROMO

Suitable for:

3241862 BLACK KNOB \varnothing 70 mm 0-1-2-3-4-5-6
D shaft hole 6x4.6 mm



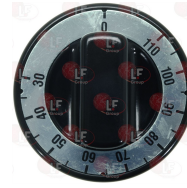
KROMO

3241855 BLACK KNOB \varnothing 70 mm 30-110°C
D shaft hole 6x4.6 mm



KROMO

3241856 BLACK KNOB \varnothing 70 mm 30-110°C
D shaft hole 6x4.6 mm



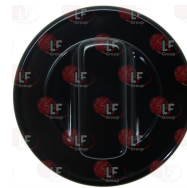
KROMO

3241853 BLACK KNOB \varnothing 70 mm 30-90°C
D shaft hole 6x4.6 mm



KROMO

3241402 KNOB BLACK \varnothing 70 mm
D shaft hole 6x4.6 mm
for thermostat, selector switch, timer,
program switch, energy regulator



KROMO 9104

3241864 KNOB BLACK MIN-MAX \varnothing 70 mm
D shaft hole 6x4.6 mm



KROMO

Labels for control panels

3399068 CONTROL PANEL



KROMO 540501

3399071 CONTROL PANEL 600 mm



KROMO 560501



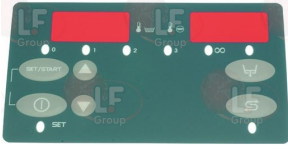
Suitable for:

KROMO



Suitable for:

5027598 DIAPHRAGM SILK SCREENED



KROMO 50571

KROMO 50572

KROMO 50575

Manifolds for dishwashers

3061029 PUMP SUCTION CASE

inlet hose-end fitting \varnothing 56 mm
hose-end fitting for drain hose \varnothing 28 mm
flange \varnothing 93 mm - exit \varnothing 11 mm closed



KROMO 500605

Microswitches

1240025 MAGNETIC MICROSWITCH

bulb \varnothing 9x30 mm - cable 920 mm



KROMO 2000309

KROMO 60520

3240196 MAGNETIC MICROSWITCH E5201V

0.04A 250V - NO contact - head 40x13x8 mm
with cable length 1400 mm
for Dishwasher (KROMO) K35 - K45 - K50 - K80
for Dishwasher (KROMO) DW121E



KROMO 10778

3240441 MAGNETIC MICROSWITCH E5301C

0.4A 250V 900 mm cable



KROMO 3003112

3240442 MAGNET FOR MICROSWITCH \varnothing 12x10 mm



KROMO 3003113

3240198 MICROSWITCH FR501 3A 400V



KROMO 10600138

3240197 MICROSWITCH MKH11D17

for Dishwasher hood type (KROMO) K100
for Dishwasher hood type (KROMO) HOOD110EL



KROMO 70305

Suitable for:

Suitable for:

3240123 MICROSWITCH 16A 250V



KROMO 60505

KROMO 60539

Motors

5022488 MOTOR 0.18KW 230/400V 50Hz



KROMO 3000120

Non-return and expansion valves

1526503 NON-RETURN VALVE \varnothing 40 mm
ballcock - outlets \varnothing 12 mm
stainless steel cap



KROMO 15201+15202+15203

KROMO 999900006

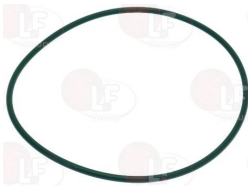
1186805 O-RING 0115 EPDM



KROMO 15285

OR and ORM gaskets

5015751 GASKET O-RING 03350 EPDM



KROMO 61067

1186672 O-RING 03193 EPDM
for delivery group



KROMO 96115

1186472 O-RING 04075 EPDM



KROMO 60377

KROMO 60532

3186197 O-RING 04150 EPDM



KROMO 13022



Suitable for:

KROMO



Suitable for:

3786579 O-RING 78.94x2.62 mm EPDM



KROMO 10506

Pegs

3389006 PEG stainless steel RH
for Dishwasher pull-through (KROMO)



KROMO 3003100

3389008 PTFE RING FOR PEG



KROMO 3003024

5054376 TAPE ROD \varnothing 8x707 mm



KROMO 3060000

3389007 LEFT-HAND STAINLESS STEEL PEG
for Dishwasher pull-through (KROMO)



KROMO 3003101

3389009 SPACER BUSHING FOR PEG



KROMO 3003025

5024589 TRANSPORTER FINGER



KROMO 3060035

Pins

3743361 PIN FOR RINSE ARM ASSEMBLY



KROMO 10651

3743680 RINSE EXTENSION \varnothing 10x162 mm
for Dishwasher hood type (KROMO) K100



KROMO 22026

3743310 RINSE BOARD EXTENSION



KROMO 75315

3743363 STAINL.STEEL BOARD EXTENSION 140 mm



KROMO 15304

3243000 STAINLESS STEEL CONNECTING ROD 180 mm



KROMO DW16039

KROMO 16039



5043180 SUPPORT SHAFT FOR CART TRANSVERSAL
thread M10
length 506 mm



KROMO 3003010

Pressure switches

3320044 PRESSURE SWITCH 0/30 mBAR
1 level
for Dishwasher (KROMO) DW107



KROMO 540205

3320036 PRESSURE SWITCH 1 LEVEL
calibration 75/35 mm
250V 16A
max operating temperature 85°C
for Dishwasher (KROMO) K90
for Dishwasher hood type (KROMO) K100



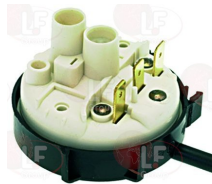
KROMO 10300026

3320082 PRESSURE SWITCH 1 LEVEL
calibration 100/18 mm
250V 16A
max operating temperature 85°C



KROMO 80225

3320091 PRESSURE SWITCH 1 LEVEL
calibration 46/26 mm
250V 16(4)A
for Dishwasher conveyor type (KROMO) K2500



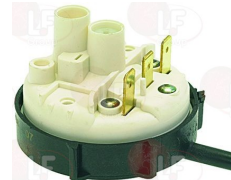
KROMO 10706/A

3320098 PRESSURE SWITCH 1 LEVEL
calibration 250/40 mm
250V 16(4)A
for Dishwasher hood type (KROMO) K120
for Dishwasher conveyor type (KROMO) K2500



KROMO 88110

3320128 PRESSURE SWITCH 1 LEVEL
calibration 60/25 mm



KROMO 540450



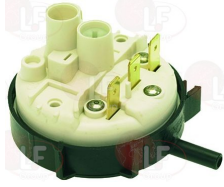
Suitable for:

KROMO



Suitable for:

3320207 PRESSURE SWITCH 1 LEVEL
calibration 85/59 mm



KROMO 75950

Probes

3390309 PROBE THERMOSTAT FOR CIR. BOARD ECO2
capillary 2000 mm
for Pan/utensilwashing machines (KROMO) DW119E



KROMO DW50562

KROMO 50562

Pump motors

3122701 ELECTRIC PUMP AP DH122660SX 2HP
inlet external \varnothing 63 mm - outlet external \varnothing 48 mm
2HP 220/400V 50Hz



KROMO

3122024 SEAL MECHANICAL FOR SHAFT \varnothing 12 mm
metal seal \varnothing internal 11 mm - \varnothing external 24 mm
height 15.5 mm
back. element \varnothing internal 14 mm - \varnothing external 24 mm
height 8 mm



KROMO 10200055
KROMO 15100/S

KROMO 15080
KROMO 22046

KROMO 15080/E

3122687 ELECTRIC PUMP AP 12250SX 1.50HP
inlet external \varnothing 62 mm - outlet external \varnothing 48 mm
1.50HP 220/400V 50Hz



KROMO

3122024 SEAL MECHANICAL FOR SHAFT \varnothing 12 mm
metal seal \varnothing internal 11 mm - \varnothing external 24 mm
height 15.5 mm
back. element \varnothing internal 14 mm - \varnothing external 24 mm
height 8 mm



KROMO 10200055
KROMO 15100/S

KROMO 15080
KROMO 22046

KROMO 15080/E

Suitable for:

3122559 ELECTRIC PUMP AP 2011DX 2HP
 inlet external \varnothing 63 mm - outlet external \varnothing 54 mm
 2HP 220/400V 50Hz 5.8/3.4A - motor revolut. 2800



KROMO

Suitable for:

3122024 SEAL MECHANICAL FOR SHAFT \varnothing 12 mm
 metal seal \varnothing internal 11 mm - \varnothing external 24 mm
 height 15.5 mm
 back. element \varnothing internal 14 mm - \varnothing external 24 mm
 height 8 mm

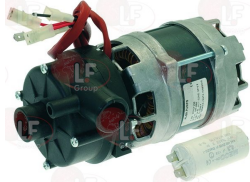


KROMO 1020055
 KROMO 15100/S

KROMO 15080
 KROMO 22046

KROMO 15080/E

3122500 ELECTRIC PUMP AP 902SX 0.10HP
 inlet external \varnothing 28 mm - outlet external \varnothing 28 mm
 0.10HP 230V 50Hz 1.1A - motor revolutions 2600
 capacitor 6.3 μ f - flow rate 80 l/min.



KROMO

1186237 O-RING 03300 EPDM



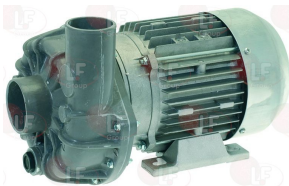
KROMO 135502

3122058 SEAL ROTARY \varnothing 11 mm BACK FACE 8 mm



KROMO 15080/C

3122245 ELECTRIC PUMP FIR 1205DX 2.70HP
 inlet external \varnothing 63 mm - outlet external \varnothing 54 mm
 2.70HP 220/400V 7/4A 50Hz - motor revolut. 2800
 flow rate 600 l/min.



KROMO 88106

KROMO 88106/A

3122026 GASKET FOR PUMP HOUSING



KROMO 10200290

KROMO 22044

3122024 SEAL MECHANICAL FOR SHAFT \varnothing 12 mm
 metal seal \varnothing internal 11 mm - \varnothing external 24 mm
 height 15.5 mm
 back. element \varnothing internal 14 mm - \varnothing external 24 mm
 height 8 mm



KROMO 1020055
 KROMO 15100/S

KROMO 15080
 KROMO 22046

KROMO 15080/E



Suitable for:

KROMO



3122033 ELECTRIC PUMP FIR 1225SX 1.50HP
 inlet external \varnothing 63 mm - outlet external \varnothing 48 mm
 1.50HP 220/400V 50Hz 4.8/2.8A - motor revol. 2800
 flow rate 625 L/min.



KROMO 10300057

3122026 GASKET FOR PUMP HOUSING



KROMO 10200290

KROMO 22044

3122024 SEAL MECHANICAL FOR SHAFT \varnothing 12 mm
 metal seal \varnothing internal 11 mm - \varnothing external 24 mm
 height 15.5 mm
 back. element \varnothing internal 14 mm - \varnothing external 24 mm
 height 8 mm



KROMO 10200055
KROMO 15100/S

KROMO 15080
KROMO 22046

KROMO 15080/E

3122180 ELECTRIC PUMP FIR 1226SX 2HP
 inlet external \varnothing 63 mm - outlet external \varnothing 48 mm
 2HP 220/400V 50Hz - motor revolutions 2850



KROMO 22037

3122026 GASKET FOR PUMP HOUSING



KROMO 10200290

KROMO 22044

3122211 IMPELLER \varnothing 118 mm



KROMO 22045

3122024 SEAL MECHANICAL FOR SHAFT \varnothing 12 mm
 metal seal \varnothing internal 11 mm - \varnothing external 24 mm
 height 15.5 mm
 back. element \varnothing internal 14 mm - \varnothing external 24 mm
 height 8 mm



KROMO 10200055
KROMO 15100/S

KROMO 15080
KROMO 22046

KROMO 15080/E

Suitable for:

3122038 ELECTRIC PUMP FIR 2212SX 0.10HP
 inlet external \varnothing 28 mm - outlet external \varnothing 28 mm
 0.10HP 230V 50Hz 1.1A - motor revolutions 2700
 capacitor 5 μ f - flow rate 80 L/min.



KROMO 10501/A

Suitable for:

3068008 CAPACITOR μ F 5 450V 50/60Hz
 operating temperature $-25+85^{\circ}\text{C}$
 in compliance with EEC 93/68 and EEC 92/31 regulat



KROMO 10702

3122395 ELECTRIC PUMP FIR 2233/X1SX 0.75HP
 inlet external \varnothing 60 mm - outlet external \varnothing 50 mm
 0.75HP 230V 50Hz - motor revolutions 2700
 capacitor 12.5 μ f



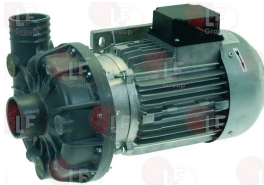
KROMO 15908/A

3122058 SEAL ROTARY \varnothing 11 mm BACK FACE 8 mm



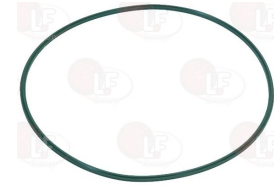
KROMO 15080/C

3122719 ELECTRIC PUMP FIR 2275SX 3.60HP
 inlet external \varnothing 63 mm - outlet external \varnothing 63 mm
 3.60HP 220/400V 50Hz 10/5.8A - motor revolut. 2800



KROMO 80912

3786468 GASKET FOR PUMP FIR 2275 3.6HP



KROMO 80912/D

3122660 HOUSING FOR PUMP FIR 2274-2275
 inlet - outlet \varnothing 63 mm



KROMO 80912/C

3122174 IMPELLER FOR PUMP FIR 2275 3.7HP \varnothing 135 m



KROMO 80912/A

3453026 SEAL ROTARY AND BACK FACE FIR
 for PUMPS 2275 and 2274



KROMO 80912/B



Suitable for:

KROMO

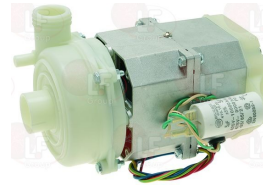


3122774 ELECTRIC PUMP FIR 4213DX 0.25HP
 inlet external \varnothing 28 mm - outlet external \varnothing 26 mm
 0.25HP 230V 50Hz - motor revolutions 2800
 capacitor 6.3 μ F



KROMO 10508

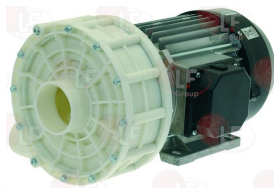
3122751 ELECTRIC PUMP OP L63.T20SX 0.27HP
 inlet external \varnothing 33 mm - outlet external \varnothing 32 mm
 0.27HP 230V 50Hz 1.1A - capacitor 5 μ F



KROMO 10501/C

KROMO 10501C

3122480 ELECTRIC PUMP OP MEC80.T200SX 2HP
 inlet external \varnothing 63 mm - outlet external \varnothing 49 mm
 2HP 220/240/380/415V 50Hz - motor revolutions 2850



KROMO 10300057/A

KROMO 22037

3122024 SEAL MECHANICAL FOR SHAFT \varnothing 12 mm
 metal seal \varnothing internal 11 mm - \varnothing external 24 mm
 height 15.5 mm
 back. element \varnothing internal 14 mm - \varnothing external 24 mm
 height 8 mm

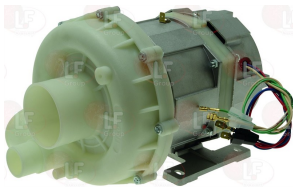


KROMO 10200055
KROMO 15100/S

KROMO 15080
KROMO 22046

KROMO 15080/E

3122279 ELECTRIC PUMP OP T.12 1.20HP
 inlet external \varnothing 60 mm - outlet external \varnothing 50 mm
 additional outlet \varnothing 31 mm
 1.20HP 230V 50Hz - motor revolutions 2700
 capacitor 16 μ F



KROMO 15908/D

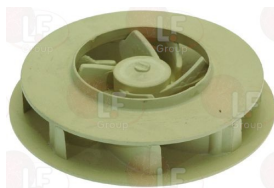
KROMO 15913

3122371 HOUSING FOR PUMP
 inlet external \varnothing 60 mm - outlet external \varnothing 50 mm
 additional outlet external \varnothing 31 mm



KROMO 15078

3122746 IMPELLER FOR PUMP \varnothing 91 mm
 for DISHWASHER GS50



KROMO 15079/F

3186239 O-RING 02525 EPDM



KROMO 15080/A



Suitable for:

3122024 SEAL MECHANICAL FOR SHAFT \varnothing 12 mm
metal seal \varnothing internal 11 mm - \varnothing external 24 mm
height 15.5 mm
back. element \varnothing internal 14 mm - \varnothing external 24 mm
height 8 mm



KROMO 10200055
KROMO 15100/S

KROMO 15080
KROMO 22046

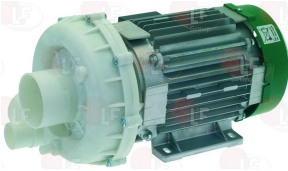
KROMO 15080/E

KROMO



Suitable for:

3122366 ELECTRIC PUMP OPT.15 1.50HP
inlet external \varnothing 60 mm - outlet external \varnothing 50 mm
additional outlet \varnothing 31 mm
1.50HP 230V 50Hz - motor revolutions 2700
capacitor 16 μ f
for Dishwasher hood type (KROMO)
K100
for Dishwasher hood type (KROMO) HOOD800



KROMO 0022009

KROMO 22009

3122371 HOUSING FOR PUMP
inlet external \varnothing 60 mm - outlet external \varnothing 50 mm
additional outlet external \varnothing 31 mm



KROMO 15078

3122372 IMPELLER \varnothing 102 mm



KROMO 22009/A

3186239 O-RING 02525 EPDM



KROMO 15080/A

3122024 SEAL MECHANICAL FOR SHAFT \varnothing 12 mm
metal seal \varnothing internal 11 mm - \varnothing external 24 mm
height 15.5 mm
back. element \varnothing internal 14 mm - \varnothing external 24 mm
height 8 mm



KROMO 10200055
KROMO 15100/S

KROMO 15080
KROMO 22046

KROMO 15080/E



Suitable for:

KROMO



3122303 ELECTRIC PUMP OP T.19 0.25HP
 inlet external \varnothing 28 mm - outlet external \varnothing 28 mm
 0.25HP 230V 50Hz 1.1A - motor revolutions 2750
 capacitor 5 μ f



KROMO 10501/A

1186237 O-RING 03300 EPDM



KROMO 135502

3122259 ELECTRIC PUMP OP T.33 0.30HP
 threaded inlet \varnothing 1" F - outlet external \varnothing 28 mm
 0.30HP 230V 50Hz 1.4A - motor revolutions 2700
 capacitor 5 μ F
 for Dishwasher (KROMO) AQUA40PS



KROMO 135501

3122736 HOUSING FOR INLET PUMP T.33 0.33HP



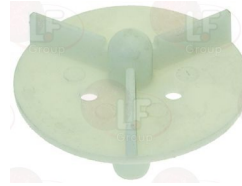
KROMO 135503

3122385 IMPELLER FOR PUMP T.33 0.3HP \varnothing 74 mm



KROMO 135505

Suitable for:
3122733 IMPELLER FOR PUMP \varnothing 63 mm



KROMO 10504

3453029 STUFFING GLAND + BACKING ELEMENT
 rotary seal hole 11 mm
 counter face h 5.5 mm



KROMO 10505

3068008 CAPACITOR μ F 5 450V 50/60Hz
 operating temperature $-25+85^{\circ}\text{C}$
 in compliance with EEC 93/68 and EEC 92/31 regulat



KROMO 10702

3122735 HOUSING FOR OUTLET PUMP T.33 0.33HP



KROMO 135504

1186237 O-RING 03300 EPDM



KROMO 135502



Suitable for:

3122024 SEAL MECHANICAL FOR SHAFT \varnothing 12 mm
 metal seal \varnothing internal 11 mm - \varnothing external 24 mm
 height 15.5 mm
 back. element \varnothing internal 14 mm - \varnothing external 24 mm
 height 8 mm



KROMO 10200055
KROMO 15100/S

KROMO 15080
KROMO 22046

KROMO 15080/E

KROMO



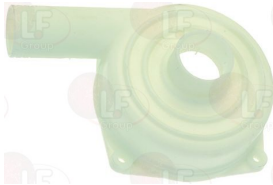
Suitable for:

3122263 ELECTRIC PUMP OP T.33 0.30HP
 inlet external \varnothing 33 mm - outlet external \varnothing 30 mm
 additional outlet external \varnothing 28 mm
 0.30HP 230V 50Hz - motor revolutions 2700
 capacitor 5 μ f



KROMO 18242

3122374 HOUSING FOR PUMP T.33
 inlet \varnothing 33 mm
 outlet 30 mm



KROMO 18248

3122375 IMPELLER \varnothing 80 mm
 threaded connection



KROMO 18246

3068008 CAPACITOR μ F 5 450V 50/60Hz
 operating temperature -25+85°C
 in compliance with EEC 93/68 and EEC 92/31 regulat



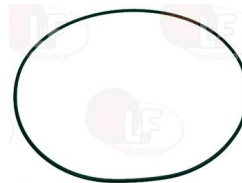
KROMO 10702

3122742 HOUSING FOR PUMP 0.33HP 2-WAY



KROMO 18247

3186232 O-RING 02350 EPDM



KROMO 18245



Suitable for:

3122024 SEAL MECHANICAL FOR SHAFT \varnothing 12 mm
metal seal \varnothing internal 11 mm - \varnothing external 24 mm
height 15.5 mm
back. element \varnothing internal 14 mm - \varnothing external 24 mm
height 8 mm



KROMO 10200055
KROMO 15100/S

KROMO 15080
KROMO 22046

KROMO 15080/E

KROMO



Suitable for:

3122368 ELECTRIC PUMP OP T.33 0.30HP
inlet external \varnothing 33 mm - outlet external \varnothing 30 mm
0.30HP 230V 50Hz - motor revolutions 2700
capacitor 5 μ f
for Dishwasher (KROMO) LUX40



KROMO 18243

3122374 HOUSING FOR PUMP T.33
inlet \varnothing 33 mm
outlet 30 mm



KROMO 18248

3122375 IMPELLER \varnothing 80 mm
threaded connection



KROMO 18246

3068008 CAPACITOR μ F 5 450V 50/60Hz
operating temperature -25+85°C
in compliance with EEC 93/68 and EEC 92/31 regulat



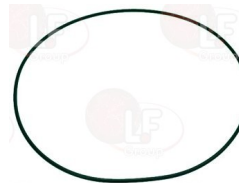
KROMO 10702

3122742 HOUSING FOR PUMP 0.33HP 2-WAY



KROMO 18247

3186232 O-RING 02350 EPDM



KROMO 18245



Suitable for:

3122024 SEAL MECHANICAL FOR SHAFT \varnothing 12 mm
metal seal \varnothing internal 11 mm - \varnothing external 24 mm
height 15.5 mm
back. element \varnothing internal 14 mm - \varnothing external 24 mm
height 8 mm



KROMO 10200055
KROMO 15100/S

KROMO 15080
KROMO 22046

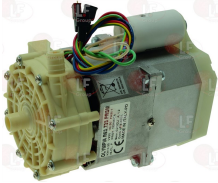
KROMO 15080/E

KROMO



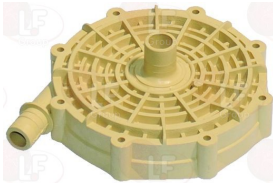
Suitable for:

3122741 ELECTRIC PUMP OP T.33 0.30HP
inlet external \varnothing 15 mm - outlet external \varnothing 15 mm
0.30HP 230V 50Hz - motor revolutions 2700
capacitor 8 μ f



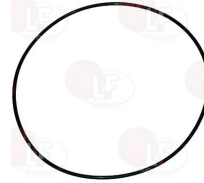
KROMO 15100/DO

7102011 HOUSING FRONT
hose-end fitting entrance \varnothing 15 mm - exit \varnothing 14 mm
for Dishwasher (KROMO) DW009M



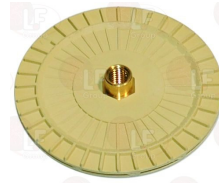
KROMO 15100/V

3122861 GASKET O-RING FOR PUMP HOUSING EPDM
 \varnothing 1.5 x 76 mm
for WAREWASHERS KROMO DW009M
for WAREWASHERS DIHR GS50 / CR_9R_05



KROMO 15100/T

7102012 IMPELLER FOR PUMP \varnothing 90 mm
for DISHWASHER KROMO DW009M
for DISHWASHER DIHR GS50



KROMO 15100/U

3122284 ELECTRIC PUMP OP T.41 0.40HP
inlet external \varnothing 29 mm - outlet external \varnothing 28 mm
0.40HP 230V 50Hz 1.8A - motor revolutions 2700
capacitor 8 μ F - flow rate 165 l/min



KROMO 16042

3122268 GASKET FOR PUMP HOUSING T.41 0.4HP
for Dishwasher (KROMO) GS50



KROMO 7130

3068014 CAPACITOR μ F 8 450V 50/60Hz
operating temperature -25+85°C
in compliance with EEC 93/68 and 92/31 regulations



KROMO 16043

KROMO 18043/A

3122269 HOUSING O FOR PUMP T.41 0.4HP



KROMO 7133



Suitable for:

3122272 IMPELLER FOR PUMP T.41 0.4HP ø 94 OPEN



KROMO 7135

KROMO



Suitable for:

3122024 SEAL MECHANICAL FOR SHAFT ø 12 mm
metal seal ø internal 11 mm - ø external 24 mm
height 15.5 mm
back. element ø internal 14 mm - ø external 24 mm
height 8 mm



KROMO 1020055
KROMO 15100/S

KROMO 15080
KROMO 22046

KROMO 15080/E

3122276 ELECTRIC PUMP OP T.45 0.45HP
inlet external ø 33 mm - outlet external ø 30 mm
additional outlet external ø 28 mm
0.45HP 230V 50Hz 1.8A - motor revolutions 2750
capacitor 8µf



KROMO 18300

3122024 SEAL MECHANICAL FOR SHAFT ø 12 mm
metal seal ø internal 11 mm - ø external 24 mm
height 15.5 mm
back. element ø internal 14 mm - ø external 24 mm
height 8 mm

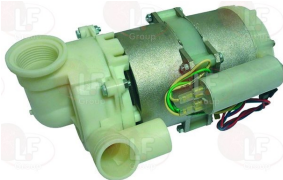


KROMO 1020055
KROMO 15100/S

KROMO 15080
KROMO 22046

KROMO 15080/E

3122758 ELECTRIC PUMP OP T.45 0.45HP
inlet ø 1" F - outlet external ø 30 mm
additional outlet external ø 30 mm
0.45HP 230V 50Hz - motor revolutions 2750
capacitor 10 µf



KROMO 401402

3122278 ELECTRIC PUMP OP T.5 0.50HP
inlet external ø 50 mm - outlet external ø 30 mm
additional outlet external ø 30 mm
0.50HP 230V 50Hz - motor revolutions 2700
capacitor 10µf



KROMO 16176

3122268 GASKET FOR PUMP HOUSING T.41 0.4HP
for Dishwasher (KROMO) GS50



KROMO 7130



Suitable for:

3122373 IMPELLER CLOSED \varnothing 90 mm
threaded connection



KROMO 15079

KROMO 15079/B

KROMO



Suitable for:

3122024 SEAL MECHANICAL FOR SHAFT \varnothing 12 mm
metal seal \varnothing internal 11 mm - \varnothing external 24 mm
height 15.5 mm
back. element \varnothing internal 14 mm - \varnothing external 24 mm
height 8 mm

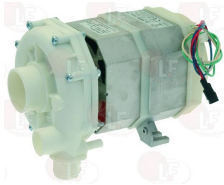


KROMO 1020055
KROMO 15100/S

KROMO 15080
KROMO 22046

KROMO 15080/E

3122265 ELECTRIC PUMP OP T.6 0.60HP
inlet external \varnothing 50 mm - outlet external \varnothing 30 mm
additional outlet external \varnothing 30 mm
0.60HP 230V 50Hz - motor revolutions 2700
capacitor 10 μ F



KROMO 26176

3122024 SEAL MECHANICAL FOR SHAFT \varnothing 12 mm
metal seal \varnothing internal 11 mm - \varnothing external 24 mm
height 15.5 mm
back. element \varnothing internal 14 mm - \varnothing external 24 mm
height 8 mm



KROMO 1020055
KROMO 15100/S

KROMO 15080
KROMO 22046

KROMO 15080/E

3122264 ELECTRIC PUMP OP T.7 0.70HP
inlet external \varnothing 50 mm - outlet external \varnothing 30 mm
additional outlet external \varnothing 30 mm
0.70HP 230V 50Hz 3.2A - motor revolutions 2750
capacitor 12.5 μ F
for Dishwasher (KROMO) K50



KROMO 150908

KROMO 150914

3122268 GASKET FOR PUMP HOUSING T.41 0.4HP
for Dishwasher (KROMO) GS50



KROMO 7130

3122746 IMPELLER FOR PUMP \varnothing 91 mm
for DISHWASHER GS50



KROMO 15079/F

3122024 SEAL MECHANICAL FOR SHAFT \varnothing 12 mm
metal seal \varnothing internal 11 mm - \varnothing external 24 mm
height 15.5 mm
back. element \varnothing internal 14 mm - \varnothing external 24 mm
height 8 mm



KROMO 1020055
KROMO 15100/S

KROMO 15080
KROMO 22046

KROMO 15080/E

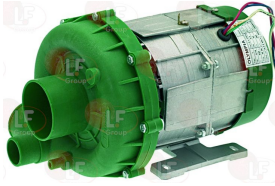


Suitable for:

KROMO



3122367 ELECTRIC PUMP OP T.75 0.75HP
 inlet external \varnothing 60 mm - outlet external \varnothing 50 mm
 additional outlet external \varnothing 31 mm
 0.75HP 230V 50Hz 3.2A - motor revolutions 2700
 capacitor 12.5 μ f



KROMO 15908

3122371 HOUSING FOR PUMP
 inlet external \varnothing 60 mm - outlet external \varnothing 50 mm
 additional outlet external \varnothing 31 mm



KROMO 15078

3122373 IMPELLER CLOSED \varnothing 90 mm
 threaded connection



KROMO 15079

KROMO 15079/B

3186239 O-RING 02525 EPDM



KROMO 15080/A

3122024 SEAL MECHANICAL FOR SHAFT \varnothing 12 mm
 metal seal \varnothing internal 11 mm - \varnothing external 24 mm
 height 15.5 mm
 back. element \varnothing internal 14 mm - \varnothing external 24 mm
 height 8 mm



KROMO 10200055

KROMO 15080

KROMO 15080/E

KROMO 15100/S

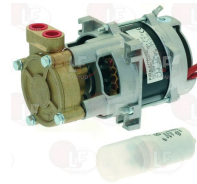
KROMO 22046

3122153 ELECTRIC PUMP TM61E 0.45HP
 inlet \varnothing 1" F - outlet \varnothing 1" F
 0.45HP 230V 50Hz 2.3A - motor revolutions 2900
 capacitor 10 μ f - flow rate 38 l/min.
 max pressure 6 ATM max temperature 90°C
 for pressure increase
 for Dishwasher hood type (KROMO) K100



KROMO 15100

3122737 ELECTROPUMP FIR B299RH 0.20HP
 inlet \varnothing 3/8" F - outlet \varnothing 3/8" F
 0.20HP 230V 50Hz 1.5A - Rpm 2800
 capacitor 6.3 μ f
 for pressure increase

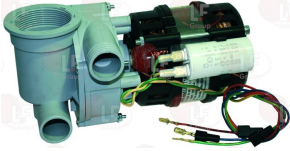


KROMO 15100/D

Suitable for:

Suitable for:

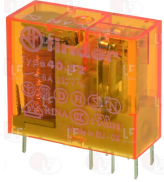
7102489 ELECTROPUMP OP L63.T19 0.25HP
 inlet \varnothing 1" F - outlet external \varnothing 30 mm
 supplementary outlet external \varnothing 28 mm
 0.19kW 230V 50Hz - capacitor 5 μ F
 for Glasswasher/Cupwasher (KROMO) DW101M



KROMO 25021

Relays

5026284 POWER RELAY FINDER 40.52.8.024.0000
 24Vac 50/60Hz - 2 exchange contacts 8A



KROMO 3006078

3351021 POWER RELAY FINDER 62.82.8.230.0000
 230V 50/60Hz
 2 exchange contacts 16A



KROMO 15620

3351029 POWER RELAY FINDER 62.82.8.230.0300
 230V 50/60Hz
 2 contacts NO 16A



KROMO 16037

3351008 POWER RELAY FINDER 62.83.8.230.0000
 230V 50/60Hz
 3 exchange contacts 16A



KROMO 16047

3351097 RELAY POWER FINDER 62.82.8.230.0309
 230V 50/60Hz
 2 NO contacts 16A



KROMO 560301

3351039 SOCKET WITH TERMINALS 95.75 10A 250V



KROMO 3006079



Suitable for:

KROMO



Suitable for:

Rinse aid pumps and accessories

3090027 DOSER PUMP G80 230V 50Hz
 detergent flow rate 0.292 gr per second
 max flow rate 0.75 L/hour (equivalent to 750 cm³)
 for GLASSWASHER and CUPWASHER



KROMO 15108/C

3090032 ELBOW FOR TANK INLET
 complete



KROMO 15123

3090017 INLET FILTER MODEL 3000



KROMO

3090018 T-FITTING BLACK



KROMO

3090150 HYDRAULIC RINSE AID DISPENSER
 mod.2000/VNR/D/1



KROMO 10799/G

KROMO 10799/G+12506

3090055 DIAPHRAGM MOD. DA 1011



KROMO 10705/O

3090221 SILICONE VALVE F/DISPENSER MOD.1000



KROMO 10705/D

KROMO 16070

3090026 HYDRAULIC RINSE AID INJECTOR MODEL 1000
 for rinse aid
 delivery connector for boiler, olive connection,
 pipe \varnothing 4x6 mm
 PTFE ball
 stainless steel spring for diaphragm, wire \varnothing 1 mm
 silicon valve
 silicon diaphragm
 pump connection fitting, olive connection,
 pipe \varnothing 6x8 mm
 inlet fitting with connection
 for flexible pipe \varnothing 4x6 mm



KROMO 10799

3090055 DIAPHRAGM MOD. DA 1011



KROMO 10705/O



Suitable for:

3090221 SILICONE VALVE F/DISPENSER MOD.1000



KROMO 10705/D

KROMO 16070

KROMO



Suitable for:

3090016 HYDRAULIC RINSE AID INJECTOR MODEL 3000
for rinse aid
with inspectionable filter



KROMO 10599999

3090017 INLET FILTER MODEL 3000



KROMO

3090018 T-FITTING BLACK



KROMO

3090028 PERISTALTIC DETERGENT PUMP G150 230V50Hz
detergent flow rate 0.622 gr per second
max flow rate 1.6 l/hour (equivalent to 1600 cm³)
for GLASSWASHER and CUPWASHER



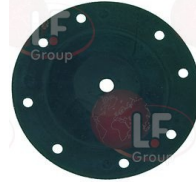
KROMO 15108

3090017 INLET FILTER MODEL 3000



KROMO

3090056 DIAPHRAGM MOD. DA 3010



KROMO

3090003 INLET VALVE FOR RINSE AID INJECTOR



KROMO

3090032 ELBOW FOR TANK INLET
complete



KROMO 15123

3090018 T-FITTING BLACK



KROMO



Suitable for:

3090029 PERISTALTIC DETERGENT PUMP G200 230V50Hz
detergent flow rate 0.777 gr per second
max flow rate 2 l/hour (equivalent to 2000 cm3)
for DISHWASHER (500 DISHES PER HOUR)



KROMO 15108/A

3090017 INLET FILTER MODEL 3000



KROMO

3090190 PERISTALTIC PUMP FOR DETERGENT
mod. RPS20RMIP - Ext.size. 160 x 80 x 85 mm
220/240 V - 50 Hz
flow rate 0.28 L/h - 2.80 L/h



KROMO

3090076 RINSE AID DISPENSER
adjustment screw
complete with transp.rubber hose and bottom filter



KROMO 10599999

3090220 SMALL FILTER WITH WEIGHT



KROMO 12525

KROMO 15058

Suitable for:

3090032 ELBOW FOR TANK INLET
complete



KROMO 15123

3090018 T-FITTING BLACK



KROMO

3090144 PERISTALTIC PUMP FOR DETERGENT PS20RS
adjustable flowrate 0.28÷2.8 L/h
santoprene tube for detergent
4.5W 230V 50Hz
complete with assembly kit



KROMO

3090194 DISPENSER DIAPHRAGM



KROMO 10807

Suitable for:

Suitable for:

3090083 RINSE AID DISPENSER
 adjusting screw
 complete with transp.rubber hose and bottom filter



KROMO 10799

3090194 DISPENSER DIAPHRAGM



KROMO 10807

3090220 SMALL FILTER WITH WEIGHT



KROMO 12525

KROMO 15058

3090219 RINSE AID DISPENSER



KROMO 10705

3090220 SMALL FILTER WITH WEIGHT



KROMO 12525

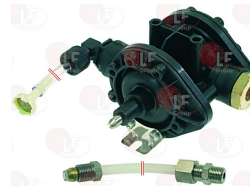
KROMO 15058

3090019 RINSE AID DISPENSER N6 E 05 G4G4
 with EPDM diaphragm
 minimum pressure 0.5 bar
 inlet side 4 mm hose fitting
 outlet side 4 mm hose fitting



KROMO

3090085 RINSE AID DOSING PUMP N6 E 05 W4G4Z
 with EPDM diaphragm
 minimum pressure 0.5 bar
 inlet side elbow fitting
 pped with: hose with filter and pressure hose
 with screws



KROMO

5050303 RINSE AID PERISTALTIC DISPENSER
 flow rate 0-3 L/h
 220V-240V 50/60Hz 8W
 time/stand-by adjustment
 for DISHWASHER DIHR GS50
 for DISHWASHER KROMO DW009M



KROMO 15985

5060263 RINSE AID PERISTALTIC DISPENSER
 flow rate 0-3 L/h
 220V-240V 50/60Hz 8W
 time/stand-by adjustment



KROMO 15985/B



Suitable for:

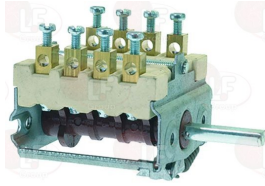
KROMO



Suitable for:

Rotary switches

3057216 SELECTOR SWITCH 0-1 POSITIONS
contact capacity 16A 230V - max 150°C
D-shaped pin 6x4.6 mm



KROMO 9564

3057326 SELECTOR SWITCH 4 POSITIONS



KROMO 3002031

3319755 SELECTOR 4 POSITIONS 16A



KROMO 10300207

KROMO 10300208

Salt containers and accessories

3067001 SALT CONTAINER



KROMO 16067

3067016 FUNNEL FOR SALT INTAKE
external \varnothing 93 mm hole \varnothing 27 mm



KROMO 16082

3067002 GASKET FOR CONTAINER
external \varnothing 82 mm
internal \varnothing 64 mm
thickness 3 mm



KROMO 16067/B

3450152 HOSE RUBBER REINFORCED \varnothing 13/19 mm
internal \varnothing 13 mm - external \varnothing 19 mm
SOLD PER METER



KROMO 2907350

3067198 O-RING 04162 EPDM



KROMO 16067/A

3067007 SALT CONTAINER CAP



KROMO 16067/D



Suitable for:

3067005 SALT CONTAINER RING NUT



KROMO 16067/C

3067602 SALT CONTAINER ASSEMBLY 85x100 mm
new model
for E35/40/41/42/45/46/50/51/55-MISTRAL40/51
NIAGARA35/40/45/51-RIVER48/50/61



KROMO 16065

KROMO

Suitable for:



Scale removers for dishwashers

3094005 4 COLUMN SCALE REMOVER
width 165 mm - length 390 mm



KROMO 16066

Sensors

3390206 WATER FLOW SWITCH FOR CARD
for CR



KROMO 50583

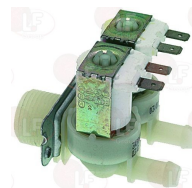
Solenoid valves

3120005 SOLEN. VALVE ELBI TYPE 329 1 WAY 180°
220/240V 50/60Hz - max. temperature 90°C
inlet 3/4" - outlet \varnothing 10.5 mm



KROMO 10703

3120007 SOLEN. VALVE ELBI TYPE 349 2 WAY 180°
220/240V 50/60Hz - max. temperature 90°C
inlet 3/4" - two outlets \varnothing 10.5 mm



KROMO 15098



Suitable for:

KROMO



3120009 SOLEN. VALVE ELBI TYPE 351 1 WAY 180°
220/240V 50/60Hz - max. temperature 90°C
inlet 3/4" - outlet ø 13.5 mm



KROMO 30001000

Suitable for:

3120010 SOLEN. VALVE ELBI TYPE 352 2 WAY 90°
220/240V 50/60Hz - max. temperature 90°C
inlet 3/4" - two outlets ø 13.5 mm



KROMO 30001001

3120013 SOLENOID VALVE ELBI TYPE 359 3-WAY 90°
220/240V 50/60Hz - max. temperature 90°C
inlet 3/4" - three outlets ø 10.5 mm



KROMO 15099

3120557 SOLENOID VALVE L182B31 1/2"FF 24V
EX L180
for water
NC
max temperature 100°C
max differential pressure 16 bar
coil 24V 50/60Hz
for Dishwasher pull-through (KROMO) - Series KP



KROMO 3002030

6240020 SOLENOID VALVE SWITCHOVER 3-WAY
230V 50/60Hz - max. temperature 90°C
3 outlets ø 10.5 mm



KROMO 15213

Springs

3250212 DOOR SHORT SPRING 230 mm
for GS100-K100



KROMO 550206/A

5047761 DOOR SPRING
overall length 240 mm
for Dishwasher (KROMO) LUX70EL



KROMO 570200



Suitable for:

Suitable for:

3250033 DOOR SPRING BBSR23
external \varnothing 52 mm - width 45 mm
for AX300-AX440



KROMO 3004011
KROMO 3009905

KROMO 3004011+3009555

KROMO 3004015

5023283 UPRIGHT SPRING SUPPORT \varnothing 30x10x9 mm



KROMO 3004012

3250213 HOOD LIFTING SPRING \varnothing 38x630 mm
for GASTRO 12S
for Dishwasher hood type (KROMO) HOOD130EL



KROMO 70302

3250219 HOOD LIFTING SPRING \varnothing 38x810 mm
for GASTRO 11S



KROMO 75303

3250165 HOOD LIFTING SPRING \varnothing 40x310 mm
for GASTRO 1200S



KROMO 1080033

KROMO 1080034

3250031 SPRING FOR DOOR BBSR21
for AX151



KROMO 3004010

KROMO 3004010+3009555

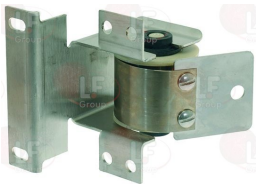
KROMO 3009907

5023283 UPRIGHT SPRING SUPPORT \varnothing 30x10x9 mm



KROMO 3004012

3250032 SPRING FOR DOOR BBSR22
for AX440



KROMO 3009906

KROMO 3009906+3004013+

3250153 SPRING FOR LONG DOOR \varnothing 20x530 mm
for DISHWASER GS100



KROMO 550206

KROMO 550212



Suitable for:

KROMO



5032289 STAINLESS STEEL DOOR SPRING BBSR22
for Dishwasher (KROMO) K2500
for Dishwasher (KROMO) K2500



KROMO 3004013

KROMO 3004013+3009555

Suitable for:

5023283 UPRIGHT SPRING SUPPORT \varnothing 30x10x9 mm



KROMO 3004012

Supports

5044696 SUPPORT FOR SELECTOR BLOCK



KROMO 89322

Supports for wash and rinse arms

3243999 BOWL ASSY WITH HOSE
height 100 mm



KROMO DW16250

KROMO 16250

5046895 COLUMN LOWER



KROMO 25006

5060891 COLUMN LOWER RL/09 CF
hose-end fittings washing \varnothing 30 mm
hose-end fittings rinse \varnothing 11 mm



KROMO 25005

3743012 LOWER IMPELLER SUPPORT
height 125 mm.



KROMO 500614

KROMO 550223

KROMO 550225

3743013 LOWER RINSE PIN
length 110 mm



KROMO 550208

KROMO 550226



KROMO



Suitable for:

3743679 ST/STEEL COLUMN UPPER



KROMO 75067

Suitable for:

3325001 MANIFOLD PIN 88 mm



KROMO 75322

3243998 STAINLESS STEEL DISK
ø internal 31 mm



KROMO 16038

5039144 SUPPORT ARM ASSEMBLY LOWER/UPPER



KROMO 90008

3186228 FLAT GASKET EPDM ø 95x75x3 mm
for Dishwasher (KROMO) K45 - K50 - K80 - K90



KROMO 80208

5039145 HUB FOR UPPER STRUCTURE FIXING



KROMO 90009

3743309 SUPPORT FOR BOTTOM ARM ASSEMBLY



KROMO 15909

3743209 UPPER RINSE COLUMN
for Dishwasher (KROMO) K35 - K37 - K40



KROMO 10909

3743759 TOP RINSE COLUMN UNIT



KROMO 10993



Suitable for:

KROMO



3243473 UPPER WASH ARM ASSEMBLY SUPPORT
complete with spindle and pipe guide



KROMO 540012
KROMO 540071+540015+...

KROMO 540047
KROMO 540072

KROMO 540071+540014

Suitable for:

3186226 GASKET FLAT EPDM \varnothing 57x43x1.5 mm
for wash support



KROMO 540032

3243474 SUPPORT LOCKING NUT



KROMO 540010

KROMO 540069

3243475 UPPER WASH ARM ASSEMBLY SUPPORT



KROMO 540017

KROMO 540048

3186226 GASKET FLAT EPDM \varnothing 57x43x1.5 mm
for wash support



KROMO 540032

3243476 SUPPORT LOCKING RING NUT
with \varnothing 10 mm hole



KROMO 540016

KROMO 540070

3243477 UPPER WASH ARM ASSEMBLY SUPPORT
complete with spindle
for Dishwasher (KROMO) KP150
for Dishwasher hood type (KROMO) K100
for Dishwasher (KROMO) KP150



KROMO 15069
KROMO 15069/D

KROMO 15069/A
KROMO 15910

KROMO 15069/C

1186304 O-RING 0112 EPDM



KROMO 13003



Suitable for:

3243995 RINSE PIPE FITTING
for Dishwasher hood type (KROMO) K100



KROMO 12006

KROMO



Suitable for:

3243478 STAINLESS STEEL SPINDLE FOR SUPPORT
for Dishwasher (KROMO) K50
for Dishwasher hood type (KROMO) K100



KROMO 15300

KROMO 15301

KROMO 22029

3243479 UPPER-LOWER WASH ARM ASSEMBLY SUPPORT
without spindle



KROMO 500612

3186014 O-RING GASKET 06225 EPDM \varnothing 67 mm



KROMO 13015

KROMO 13020

3243995 RINSE PIPE FITTING
for Dishwasher hood type (KROMO) K100



KROMO 12006

3243478 STAINLESS STEEL SPINDLE FOR SUPPORT
for Dishwasher (KROMO) K50
for Dishwasher hood type (KROMO) K100



KROMO 15300

KROMO 15301

KROMO 22029

3243480 SUPPORT LOCKING RING NUT



KROMO 500610

KROMO 500623

3243388 WASH ARM ASSEMBLY SUPPORT
for Dishwasher hood type (KROMO) K100



KROMO 15041

KROMO 15041/A

3743145 FLAT WASHER M8
internal/external \varnothing 8.4/16 mm - thickness 1.6 mm
stainless steel - UNI 6592 - DIN 125 A - ISO 7089



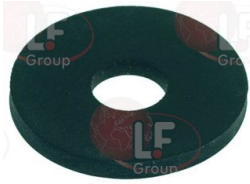
KROMO 11185

KROMO 11611



Suitable for:

3186275 GASKET FLAT EPDM \varnothing 24x7x2.5 mm



KROMO 13313

3243389 O-RING 03162 EPDM
for Dishwasher hood type (KROMO) K100



KROMO 13006

3243385 WASH ARM ASSEMBLY SUPPORT \varnothing 18 mm
for Dishwasher (KROMO) K35 - K37 - K40



KROMO 10205

KROMO 10205/B

KROMO

Suitable for:

3243994 HOSE-END FITTING 10x17 mm



KROMO 12506

3743144 TIE ROD PIN
for Dishwasher hood type (KROMO) K100



KROMO 70303

3186244 O-RING 03125 EPDM
for Dishwasher (KROMO) K35 - K37 - K40



KROMO 13000

Switches

3319222 BIPOLAR SWITCH 16A 250V



KROMO 15800

3319920 BLACK TWO-POLE SWITCH 16A 250V



KROMO 15812

3319646 GREEN/ORANGE CAM
for Dishwasher (KROMO) K35 - K37 - K40 - K45 - K50
K80 - K90
for Dishwasher hood type (KROMO) K100



KROMO 15824

KROMO 15824/A





Suitable for:

3319094 BLUE MONOPOLAR SWITCH ROLD E2009

monopolar switch NO 16A 250V
max temperature 125°C



KROMO 15860

Suitable for:

3319744 BUTTON 2 NEUTRAL LIGHT BLUE



KROMO 560523

3319745 BUTTON 4 LIGHT BLUE 2 SETTINGS



KROMO 560530

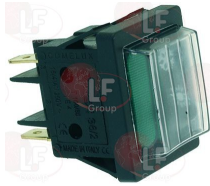
3319743 BUTTON 5 LIGHT BLUE



KROMO 560526

3319093 CHANGEOVER SWITCH 1 POLE GREEN 16A 250V

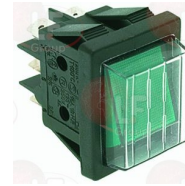
16(4)A 250V - with switch cover
with indicator lamp
max. temperature 120°C
mounting hole 22x30 mm



KROMO 18080

3319091 CHANGEOVER SWITCH 2 POLE GREEN 16A 250V

16(4)A 250V - max. temperature 120°C
with indicator lamp and push-button cap
mounting hole 22x30 mm



KROMO 15050

3319097 GREEN BIPOLAR SWITCH ROLD E0503

bipolar change over switch 16A 250V
max temperature 125°C



KROMO 15865

3319096 GREEN BIPOLAR SWITCH 250V

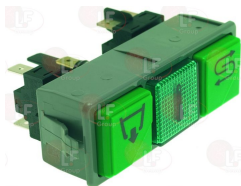


KROMO 15849

KROMO 15861

3319104 GREEN DOUBLE SWITCH BLOCK 250V 16A

1 monopolar switch
1 bipolar switch
with indicator lamp



KROMO 15892

3319446 GREEN SILK-SCREEN PR. CAP F/PUSH-BUTTON



KROMO 15876



Suitable for:

3221097 NEUTRAL INDICATOR LAMP 220V
head \varnothing 8 mm - 120°C



KROMO 15826

KROMO



Suitable for:

3221590 GREEN LAMP CAP Q
for Dishwasher (KROMO) K35 - K37 - K40 - K45 - K50
K80 - K90
for Dishwasher hood type (KROMO) K100



KROMO 15825

5044195 HOUSING FOR PUSH-BUTTON SQUARE BLACK
mounting hole 28x28 mm - for push-button 23x23 mm



KROMO 15842

3319571 HOUSING FOR PUSH-BUTTON SQUARE GRAY
mounting hole 28x28 mm - for push-button 23x23 mm



KROMO 15815

3319611 HOUSING PUSH-BUTTON BLACK / 2 SQUA. BUTTO
mounting hole 50x28 mm - for push-button 23x23 mm



KROMO 15952

3221097 NEUTRAL INDICATOR LAMP 220V
head \varnothing 8 mm - 120°C



KROMO 15826

3319415 KEY SUPPORTING BODY
for all models



KROMO 15844

KROMO 15844/A

3319317 ON-OFF 1 BUTTON



KROMO 560512

KROMO 560527

KROMO 560527/A

Suitable for:

3319672 OVAL KEY SUPPORT



KROMO 89300

3319669 PUSH-BUTTON "START" HORIZONT. 23x13 mm



KROMO 89341

3600046 PUSH-BUTTON



KROMO 3002053

3319560 PUSH-BUTTON "DRAIN PUMP" 23x13 mm



KROMO 89343

3319575 PUSH-BUTTON CONTINUOUS CYCLE 23x13 mm



KROMO 83346

KROMO 89346

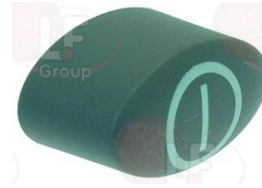
3319657 PUSH-BUTTON FISSO SQUARE GRAY 23x23 mm
for Dishwasher (KROMO) K35 - K40 - K45 - K50 - K80
K90
for Dishwasher hood type (KROMO) K100



KROMO 15880

Suitable for:

3319665 PUSH-BUTTON "ON-OFF" 23x13 mm



KROMO 89340

3454036 CONTACT ERSCE C10B
NO - 6A 230V



KROMO 3002054

3319563 PUSH-BUTTON "TWO PACES" 23x13 mm



KROMO 89342

6227068 PUSH-BUTTON ELLIPTICAL 17x13 mm DARK GRA
for Dishwasher hood type (KROMO) HT11



KROMO 84001



KROMO



Suitable for:

3319573 PUSH-BUTTON PANEL 16A 250V
1 cold rinse button + 1 pilot light



KROMO 15899/B

Suitable for:

3221097 NEUTRAL INDICATOR LAMP 220V
head ø 8 mm - 120°C



KROMO 15826

3319574 PUSH-BUTTON PANEL 16A 250V
1 drain pump button + 1 pilot light



KROMO 15899/C

3221097 NEUTRAL INDICATOR LAMP 220V
head ø 8 mm - 120°C



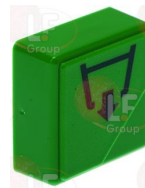
KROMO 15826

3319081 PUSH-BUTTON ROUND GREEN ø 23 mm "CYCLE"



KROMO

3319655 PUSH-BUTTON SQUARE GREEN 23x23 mm "DRAIN"
for Dishwasher (KROMO) K35 - K37 - K40 - K45 - K50
K80 - K90
for Dishwasher hood type (KROMO) K100



KROMO 15854

3319647 PUSH-BUTTON SQUARE GREEN 23x23mm "ON/OFF"
for Dishwasher (KROMO) K35 - K37 - K40 - K45 - K50
K80 - K90
for Dishwasher hood type (KROMO) K100



KROMO 15857

KROMO 15874

3319715 PUSH-BUTTON SQUARE YELLOW 23x23 mm
for Dishwasher (KROMO) K35 - K37 - K40 - K45 - K50
K80 - K90
for Dishwasher hood type (KROMO) K100



KROMO 15819

3319650 PUSH-BUTTON SQUARE YELLOW 23x23 mm "STAR"



KROMO 15987

3319092 PUSH-BUTTON 2-POLE GREEN 250V 16A
16(4)A 250V - max. temperature 120°C
with indicator lamp - mounting hole 22x30 mm



KROMO 15049

Suitable for:

Suitable for:

3319673 START KEY SUPPORT

3319674 PUSH-BUTTON "START" VERTICAL 23x13 mm



KROMO 89301

KROMO 89347

3319414 START PUSH-BUTTON

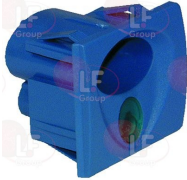


KROMO 560514

KROMO 560529/A

3319558 SUPPORT FOR SWITCH

3786505 GASKET ORM 0370-15 NBR

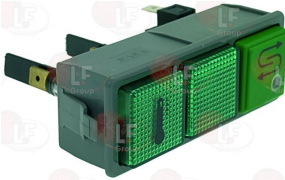


KROMO 89302

KROMO 89332

3319106 SWITCH BLOCK W/ 1 GREEN MONOPOLAR SWITCH
1 monopolar switch
2 green indicator lamps 250V 16A

3319446 GREEN SILK-SCREEN PR. CAP F/PUSH-BUTTON



KROMO 15894

KROMO 15876

3221097 NEUTRAL INDICATOR LAMP 220V
head \varnothing 8 mm - 120°C



KROMO 15826

3319107 SWITCH BLOCK W/ 1 GREEN MONOPOLAR SWITCH
1 monopolar switch
with green indicator lamp 250V 16A

3319446 GREEN SILK-SCREEN PR. CAP F/PUSH-BUTTON



KROMO 15899

KROMO 15876



Suitable for:

3221097 NEUTRAL INDICATOR LAMP 220V
head ø 8 mm - 120°C



KROMO 15826

KROMO



Suitable for:

3319105 SWITCH BLOCK WITH 1 GREEN BIPOLAR SWITCH
1 bipolar change over switch
with green indicator lamp 250V



KROMO 15893

3221097 NEUTRAL INDICATOR LAMP 220V
head ø 8 mm - 120°C



KROMO 15826

3319102 SWITCH BLOCK WITH 2 BLANKS - GREY
green indicator lamp 250V
for Dishwasher (KROMO)



KROMO 15889

3319446 GREEN SILK-SCREEN PR. CAP F/PUSH-BUTTON



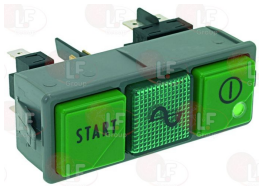
KROMO 15876

3221097 NEUTRAL INDICATOR LAMP 220V
head ø 8 mm - 120°C



KROMO 15826

3319101 SWITCH WITH 2 BUTTONS AND 1 LAMP - GREEN
1 monopolar switch
1 bipolar switch
with indicator lamp 16A 250V
for Dishwasher (KROMO)



KROMO 15888

3221097 NEUTRAL INDICATOR LAMP 220V
head ø 8 mm - 120°C



KROMO 15826

Suitable for:

3319103 SWITCH WITH 2 BUTTONS AND 1 LAMP - GREEN

1 monopolar switch
1 bipolar change over switch
with indicator lamp 16A 250V



KROMO 15891

Suitable for:

3221097 NEUTRAL INDICATOR LAMP 220V

head \varnothing 8 mm - 120°C



KROMO 15826

3319090 SWTCH 2-POLE GREEN 16A 250V

16(4)A 250V - max. temperature 120°C
with indicator lamp and push-button cap
mounting hole 22x30 mm



KROMO 15048

3319413 TIME SETTING PUSH-BUTTON



KROMO 560530/A

3319095 YELLOW MONOPOLAR SWITCH ROLD E2009

monopolar switch NO 16A 250V
max temperature 125°C



KROMO 15859

Telethermometers

3441011 BLACK TELETHERMOMETER 56x25 mm 0-120°C

plastic case
capillary length 1500 mm
bulb \varnothing 6x15 mm



KROMO 10500005

3441011 BLACK TELETHERMOMETER 56x25 mm 0-120°C

plastic case
capillary length 1500 mm
bulb \varnothing 6x15 mm



KROMO 10500005

3441076 TELETHERMOMETER 63x11 mm 0-120°C

plastic case
covered capillary 2000 mm
bulb \varnothing 6x33 mm



KROMO 10500011

5048086 SUPPORT THERMOMETERS



KROMO 89306



Suitable for:

KROMO



Suitable for:

Terminal blocks

3247016 3-POLE TERMINAL BLOCK FV273 40A 450V
for cable max 6 mm²
operating temperature 150°C
nominal voltage 450 V



KROMO 500550

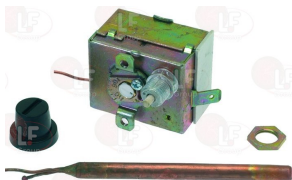
3247009 6-POLE TERMINAL BLOCK FV122/B 40A 600V
for cable max 6 mm²
operating temperature 150°C
nominal voltage 450 V



KROMO 500551

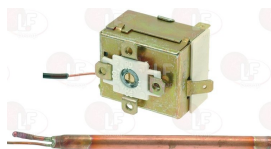
Thermostats

3444282 SINGLE-PHASE THERMOSTAT 90-110°C
with manual reset
covered capillary 1500 mm
bulb \varnothing 6.5x95 mm
15A 250V
for Dishwasher (KROMO) K90



KROMO 2000430

3444280 SINGLE-PHASE THERMOSTAT 0-90°C
covered capillary 1500 mm
bulb \varnothing 6.5x90 mm
15A 250V
with adjusting screw



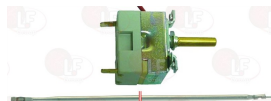
KROMO 10707/1

3444133 SINGLE-PHASE THERMOSTAT 30-90°C
covered capillary 2200 mm
bulb \varnothing 6.5x95 mm
15A 250V
D shaft \varnothing 6x4.6 mm



KROMO 10707/2

3744075 THERMOSTAT TR2 0-280°C
capillary length 960 mm
bulb \varnothing 3x185 mm
for Dishwasher (KROMO)



KROMO 10707/3

Timers

3322347 ELECTRONIC TIMER 3 SETTINGS
cycle 90"-120"-180"
for Dishwasher (KROMO) DW009M
for Dishwasher (KROMO) DW009M



KROMO DW50553

KROMO 50553



Tool holder shafts

9742006 TOOL SHAFT FEATHER
dimensions 6x6x25 mm



KROMO 2001045

Tubing and hoses

3248208 BOTTOM WASH OUTLET SLEEVE



KROMO 16168

3248205 HOSE FOR WATER OUTLET



KROMO 150048/A

3248138 INLET CONNECTION TUBING
internal \varnothing 28 - length 70 mm



KROMO 10718

KROMO 17215

3248140 INLET HOSE
internal \varnothing 30 and 33 mm
lunghezza totale 105 mm
for STAR-CF-LS



KROMO 18787

3248203 INLET HOSE
external \varnothing 70 mm - internal \varnothing 58 mm



KROMO 25032

3248210 INLET SLEEVE \varnothing 50x50 mm



KROMO 16169

3248105 OUTLET HOSE
internal \varnothing 50 and 31 mm
overall length 205 mm



KROMO M16170

KROMO 16170

KROMO 16170/M

3248113 INLET CONNECTION HOSE
internal \varnothing 58 and 50 mm
overall length 195 mm



KROMO A15032

KROMO 11600100

KROMO 15032/A



Suitable for:

3248139 OUTLET HOSE
internal \varnothing 48/35/34 mm



KROMO 11600101

Suitable for:

3248206 OUTLET HOSE LOWER NEW
internal \varnothing 30 mm - external \varnothing 40 mm



KROMO 15033/A

5028523 PRESSURE SWITCH SUCTION PIPE



KROMO 10600208

3248204 SLEEVE \varnothing 28 mm TOP WASH



KROMO 11600048

KROMO 18044

KROMO 18767

3248180 STAR OUTLET HOSE
internal \varnothing 30 mm - external \varnothing 40 mm
overall length 370 mm



KROMO 18788

3248209 TOP WASH OUTLET SLEEVE
developed length 880 mm
internal \varnothing 30 mm - external \varnothing 37 mm



KROMO 30002021

3248207 TOP WASH SLEEVE



KROMO 150048

Wash and rinse arms for warewashers

3743010 BOTTOM RINSE ARM ASSEMBLY 580 mm



KROMO 80201
KROMO 88115
KROMO 90003

KROMO 80202
KROMO 88116

KROMO 80915
KROMO 88918

3501108 STAINLESS STEEL RINSE JET
thread \varnothing 5 mm



KROMO 560018

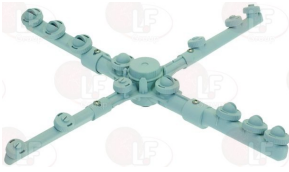


KROMO



Suitable for:

3743248 BOTTOM WASH AND RINSE ARM ASSEMBLY
for Dishwasher (KROMO) K40



KROMO 16950
KROMO 540998

KROMO 16951
KROMO 540999

KROMO 400906

Suitable for:

3501203 BIG HOLE OPEN RINSE JET



KROMO 10357

KROMO 10369

3243384 BUSHING FOR WASH ARM ASSEMBLY \varnothing 14x11 mm
for Dishwasher (KROMO) K35 - K37 - K40
for Dishwasher hood type (KROMO) K100



KROMO 13319

3501204 CLOSED RINSE JET
for Dishwasher (KROMO) K35 - K37



KROMO 10358

KROMO 10370

1186352 O-RING 02050 EPDM
for Dishwasher (KROMO)
K35 - K37
for Dishwasher hood type (KROMO)
K100



KROMO 13009

KROMO 13017

3243472 WASH ARM ASSEMBLY LOCKING NUT
for Dishwasher (KROMO) K35 - K37 - K40



KROMO 10365

KROMO 10377

3501202 CLOSED RINSE JET
with "O" ring
for Dishwasher (KROMO) K35 - K37



KROMO 10372

KROMO 12538

1186411 O-RING 02031 EPDM
for Dishwasher (KROMO)
K35 - K37
for Dishwasher (KROMO) DW009M



KROMO 13002

3501201 OPEN RINSE JET
for Dishwasher (KROMO) K35 - K37 - K40



KROMO 10371

KROMO 12537



Suitable for:

KROMO



Suitable for:

3743752 CAP FOR TOP WASH 20 mm



KROMO 12503

3243402 COMPLETE RINSE ARM ASSEMBLY 480 mm



KROMO 10600913
KROMO 75918

KROMO 75061

KROMO 75069

3743756 BOSS FOR WASH IMPELLER



KROMO 10650

3743009 CAP FOR RINSE PIPE
thread \varnothing 9 mm



KROMO 560017

3501108 STAINLESS STEEL RINSE JET
thread \varnothing 5 mm



KROMO 560018

5025263 HUB TOP stainless steel IMPELLER
external \varnothing 46 mm



KROMO 540078

3243352 LOWER WASH AND RINSE ARM ASSEMBLY



KROMO 18955

KROMO 18995

KROMO 18996

3243384 BUSHING FOR WASH ARM ASSEMBLY \varnothing 14x11 mm
for Dishwasher (KROMO) K35 - K37 - K40
for Dishwasher hood type (KROMO) K100



KROMO 13319



Suitable for:

3501202 CLOSED RINSE JET
with "O" ring
for Dishwasher (KROMO) K35 - K37



KROMO 10372

KROMO 12538

1186411 O-RING 02031 EPDM
for Dishwasher (KROMO)
K35 - K37
for Dishwasher (KROMO) DW009M



KROMO 13002

3501201 OPEN RINSE JET
for Dishwasher (KROMO) K35 - K37 - K40



KROMO 10371

KROMO 12537

3243471 WASH ARM ASSEMBLY BOSS
complete with bushings
for Dishwasher (KROMO) K35 - K37



KROMO 10364

KROMO 10376

3243356 LOWER WASH AND RINSE ARM ASSEMBLY



KROMO 400909

KROMO 540995

KROMO 540996

KROMO

Suitable for:

3501204 CLOSED RINSE JET
for Dishwasher (KROMO) K35 - K37



KROMO 10358

KROMO 10370

1186352 O-RING 02050 EPDM
for Dishwasher (KROMO)
K35 - K37
for Dishwasher hood type (KROMO)
K100



KROMO 13009

KROMO 13017

3501205 SMALL HOLE OPEN RINSE JET



KROMO 10366

KROMO 10378

3243472 WASH ARM ASSEMBLY LOCKING NUT
for Dishwasher (KROMO) K35 - K37 - K40



KROMO 10365

KROMO 10377





Suitable for:

KROMO



3243400 LOWER WASH/RINSE ARM ASSEMBLY



KROMO 10904
KROMO 10999

KROMO 10991

KROMO 10998

3743017 BOWL ASSY WITH END-HOSE PIPE



KROMO 135250

3501202 CLOSED RINSE JET with "O" ring for Dishwasher (KROMO) K35 - K37



KROMO 10372

KROMO 12538

1186411 O-RING 02031 EPDM for Dishwasher (KROMO) K35 - K37 for Dishwasher (KROMO) DW009M



KROMO 13002

3501201 OPEN RINSE JET for Dishwasher (KROMO) K35 - K37 - K40



KROMO 10371

KROMO 12537

Suitable for:

3501203 BIG HOLE OPEN RINSE JET



KROMO 10357

KROMO 10369

3243384 BUSHING FOR WASH ARM ASSEMBLY \varnothing 14x11 mm for Dishwasher (KROMO) K35 - K37 - K40 for Dishwasher hood type (KROMO) K100



KROMO 13319

3501204 CLOSED RINSE JET for Dishwasher (KROMO) K35 - K37



KROMO 10358

KROMO 10370

1186352 O-RING 02050 EPDM for Dishwasher (KROMO) K35 - K37 for Dishwasher hood type (KROMO) K100



KROMO 13009

KROMO 13017

3501205 SMALL HOLE OPEN RINSE JET



KROMO 10366

KROMO 10378



Suitable for:

3243471 WASH ARM ASSEMBLY BOSS
complete with bushings
for Dishwasher (KROMO) K35 - K37



KROMO 10364

KROMO 10376

3743663 RINSE ARM ASSEMBLY



KROMO 540083

5023385 WASHER SLIDING 16x10x8 mm



KROMO 13330

3743751 RINSE ARM ASSEMBLY UNIT



KROMO 10601

KROMO 10601/A

3743669 RINSE ARM ASSEMBLY 465 mm
for Dishwasher (KROMO)
LUX61
for Dishwasher (KROMO) LUX61
for Dishwasher hood type (KROMO) DW115E



KROMO 75920

KROMO



Suitable for:

3243472 WASH ARM ASSEMBLY LOCKING NUT
for Dishwasher (KROMO) K35 - K37 - K40



KROMO 10365

KROMO 10377

3743662 LOWER WASH ARM



KROMO 540084

3743682 RINSE AXLE



KROMO 75323



Suitable for:

KROMO



7102396 RINSE ARM ASSEMBLY 656 mm



KROMO 91103

3501108 STAINLESS STEEL RINSE JET
thread \varnothing 5 mm



KROMO 560018

7100967 RINSE ARM BOSS



KROMO 75920/A

3243371 RINSE ARM CAP
for Dishwasher (KROMO) K40
for Dishwasher hood type (KROMO) K100



KROMO 12527

KROMO 12532

7102181 RINSE ARM DX 216 mm
for WAREWASHERS
for Dishwasher hood type (KROMO) DW115E



KROMO 75920/D

3743855 RINSE SCREW MA5



KROMO 10652

Suitable for:

3743009 CAP FOR RINSE PIPE
thread \varnothing 9 mm



KROMO 560017

3243365 RINSE ARM CAP



KROMO 2906450

1186421 O-RING 02018 EPDM
for Dishwasher hood type (KROMO) K100



KROMO 13016

7103454 RINSE ARM SX 216 mm
for WAREWASHERS DW115E
for Dishwasher hood type (KROMO) DW115E



KROMO 75920/S



KROMO



Suitable for:

Suitable for:

3743008 STAINLESS STEEL WASH ARM ASSEMBLY 530 mm

3743018 FLOW RETAINING RING



KROMO 10600900

KROMO 11600023

KROMO 10600011/A

KROMO 11600033

3743005 IMPELLER SUPPORT LOWER COLUMN

3743006 LOWER RINSE PIN
length 100 mm



KROMO 11600007

KROMO 11600035

KROMO 11600021

KROMO 4374

3743007 LOWER WASH SUPPORT

3528074 STAINLESS STEEL WASHER \varnothing 48x16 mm



KROMO 500621

KROMO 10600011

3743151 WASH ARM BOSS



KROMO 10600903

3743002 STAINLESS STEEL WASH ARM ASSY 530 mm

3743750 BOTTOM SLEEVE 170 mm
for Dishwasher hood type (KROMO) HOOD110



KROMO 75915

KROMO 76077

3743016 HUB FOR IMPELLER
heigth 47 mm

3743003 NUR FOR IMPELLER HUB
heigth 31 mm



KROMO 75316

KROMO 75320



Suitable for:

3743004 NUT FOR SUPPORT HUB
for Pan/utensilwashing machines (KROMO) KP400
for Pan/utensilwashing machines (KROMO) KP400



KROMO 75317

3743149 SPACER FOR HUB



KROMO 75321

3243401 UPPER RINSE ARM ASSEMBLY 300 mm
for Dishwasher (KROMO) K35 - K37 - K40



KROMO 10910
KROMO 10997

KROMO 10992

KROMO 10996

1186411 O-RING 02031 EPDM
for Dishwasher (KROMO)
K35 - K37
for Dishwasher (KROMO) DW009M



KROMO 13002

3743014 SLIDING BUSH PTFE
ø internal 10 mm.
ø external 14 mm.
for Dishwasher (KROMO) K35 - K37 - K40



KROMO 13320

KROMO



Suitable for:

3743015 RINSE ELBOW NUT 1/4"



KROMO 75319

3243384 BUSHING FOR WASH ARM ASSEMBLY ø 14x11 mm
for Dishwasher (KROMO) K35 - K37 - K40
for Dishwasher hood type (KROMO) K100



KROMO 13319

3501201 OPEN RINSE JET
for Dishwasher (KROMO) K35 - K37 - K40



KROMO 10371

KROMO 12537

3243472 WASH ARM ASSEMBLY LOCKING NUT
for Dishwasher (KROMO) K35 - K37 - K40



KROMO 10365

KROMO 10377

3243360 WASH AND RINSE ARM ASSEMBLY
for Dishwasher hood type (KROMO) K100



KROMO 15956

KROMO 15958

KROMO 75910

3243368 COMPLETE JET FOR RINSE ARM
for Dishwasher (KROMO) K40
for Dishwasher hood type (KROMO) K100



KROMO 10262

KROMO 12528

KROMO 12533

3243992 FIXING SCREW STAINLESS STEEL RETAINER
for Dishwasher (KROMO) K40
for Dishwasher hood type (KROMO) K100



KROMO 11101/B

KROMO 11101/I

3743147 LOWER SHAFT SOCKET



KROMO 15040/A

KROMO 22028

3243993 NUT BLOCKING PLATE FOR IMPELLER
for Dishwasher (KROMO) K40
for Dishwasher hood type (KROMO) K100



KROMO 10210

KROMO 10260

Suitable for:

3243384 BUSHING FOR WASH ARM ASSEMBLY \varnothing 14x11 mm
for Dishwasher (KROMO) K35 - K37 - K40
for Dishwasher hood type (KROMO) K100



KROMO 13319

3243377 COMPLETE JET FOR WASH ARM
for Dishwasher hood type (KROMO) K100



KROMO 10211

KROMO 10261

3243996 IMPELLER HUB 4 WAYS LARGE SIZE
complete with bushes
for Dishwasher hood type (KROMO) K100



KROMO 10209

KROMO 10259

KROMO 10259+13319+13319

3743152 LOWER STAINLESS STEEL FITTING
for Dishwasher (KROMO) K50
for Dishwasher hood type (KROMO) K100
for Dishwasher (KROMO) K50



KROMO 15039

3243382 O-RING 02087 EPDM
for Dishwasher hood type (KROMO) K100



KROMO 13018



Suitable for:

3243374 OPEN RINSE JET \varnothing 10 mm
for wash assembly boss
for Dishwasher (KROMO) K40
for Dishwasher hood type (KROMO) K100



KROMO 10213

KROMO 10263

3243381 PLASTIC END CAP \varnothing 26 mm
for wash arm
for Dishwasher hood type (KROMO) K100



KROMO 10207

KROMO 10257

3243359 WASH AND RINSE ARM ASSEMBLY LOW
length 455 mm



KROMO 26957

3243368 COMPLETE JET FOR RINSE ARM
for Dishwasher (KROMO) K40
for Dishwasher hood type (KROMO) K100



KROMO 10262

KROMO 12528

KROMO 12533

3243997 IMPELER HUB 4 WAYS SMALL SIZE
complete with bushes
for Dishwasher (KROMO) K40



KROMO 10208

KROMO 10258

KROMO 10258+13319+13319

KROMO



Suitable for:

3243378 OPEN WASH JET \varnothing 28 mm
for wash assembly boss
for Dishwasher (KROMO) K40
for Dishwasher hood type (KROMO) K100



KROMO 10218

KROMO 10268

3743148 RING NUT FOR WASH/RINSE ARM ASSY
for Dishwasher hood type (KROMO) K100



KROMO 15038

3243384 BUSHING FOR WASH ARM ASSEMBLY \varnothing 14x11 mm
for Dishwasher (KROMO) K35 - K37 - K40
for Dishwasher hood type (KROMO) K100



KROMO 13319

3243377 COMPLETE JET FOR WASH ARM
for Dishwasher hood type (KROMO) K100



KROMO 10211

KROMO 10261

3243382 O-RING 02087 EPDM
for Dishwasher hood type (KROMO) K100



KROMO 13018



Suitable for:

3243374 OPEN RINSE JET \varnothing 10 mm
for wash assembly boss
for Dishwasher (KROMO) K40
for Dishwasher hood type (KROMO) K100



KROMO 10213

KROMO 10263

3243381 PLASTIC END CAP \varnothing 26 mm
for wash arm
for Dishwasher hood type (KROMO) K100



KROMO 10207

KROMO 10257

3743664 WASH ARM ASSEMBLY



KROMO 500700

3743757 PLASTIC IMPELLER RING NUT



KROMO 500701

3743230 WASH ARM ASSEMBLY HEAD



KROMO 10200121

KROMO



Suitable for:

3243378 OPEN WASH JET \varnothing 28 mm
for wash assembly boss
for Dishwasher (KROMO) K40
for Dishwasher hood type (KROMO) K100



KROMO 10218

KROMO 10268

3743758 BOSS FOR PLASTIC IMPELLER



KROMO 500702

5018192 SPACER IMPELLER HUB \varnothing 22x26 mm



KROMO 550220

3243369 WASH ARM CAP \varnothing 18 mm
for Dishwasher (KROMO) K40



KROMO 10206

KROMO 10256



Suitable for:

KROMO



7100339 WASH ARM 6 NOZZLES BAYONETT
for Dishwasher conveyor type (KROMO) K2500



KROMO 3004147

Suitable for:

5013846 WASH IMPELLER CAP
for Pan/utensilwashing machines (KROMO) KP400
for Pan/utensilwashing machines (KROMO) KP400



KROMO 3003029

3743763 WASH/RINSE UNIT ø 490 mm



KROMO 500750

3501203 BIG HOLE OPEN RINSE JET



KROMO 10357

KROMO 10369

3243384 BUSHING FOR WASH ARM ASSEMBLY ø 14x11 mm
for Dishwasher (KROMO) K35 - K37 - K40
for Dishwasher hood type (KROMO) K100



KROMO 13319

3501202 CLOSED RINSE JET
with "O" ring
for Dishwasher (KROMO) K35 - K37



KROMO 10372

KROMO 12538

3243992 FIXING SCREW STAINLESS STEEL RETAINER
for Dishwasher (KROMO) K40
for Dishwasher hood type (KROMO) K100



KROMO 11101/B

KROMO 11101/I

1186411 O-RING 02031 EPDM
for Dishwasher (KROMO)
K35 - K37
for Dishwasher (KROMO) DW009M



KROMO 13002

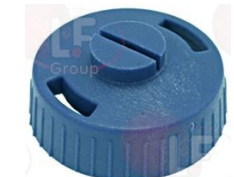
1186352 O-RING 02050 EPDM
for Dishwasher (KROMO)
K35 - K37
for Dishwasher hood type (KROMO)
K100



KROMO 13009

KROMO 13017

3501201 OPEN RINSE JET
for Dishwasher (KROMO) K35 - K37 - K40



KROMO 10371

KROMO 12537



Suitable for:

5050300 RINSE ARM LH 185 mm
for Dishwasher hood type (KROMO) HOOD800



KROMO 500752

7101685 WASH ARM LH 218 mm
for Dishwasher hood type (KROMO) HOOD800



KROMO 500754

7101684 WASH/RINSE ASSEMBLY
for Dishwasher hood type (KROMO) HOOD800



KROMO 500755

5057091 WASHER SLIDING \varnothing 24.5 mm
in arnite



KROMO 90031

KROMO



Suitable for:

5050299 RINSE ARM RH 185 mm
for Dishwasher hood type (KROMO) HOOD800



KROMO 500751

5063515 WASH ARM RH 218 mm



KROMO 500753

Wash jets and accessories

3243375 BLANK WASH JET \varnothing 18 mm
for wash assembly boss
for Dishwasher (KROMO) K40



KROMO 10216

KROMO 10265

3501227 CLOSED JET
for Dishwasher (KROMO) K40
for Dishwasher hood type (KROMO) K100



KROMO 10217

KROMO 10267



Suitable for:

KROMO



3243364 COMPLETE JET FOR RINSE ARM ASSEMBLY



KROMO 2902811

Suitable for:

3243367 COMPLETE JET FOR WASH ARM
for Dishwasher (KROMO) K40



KROMO 10264

KROMO 10746

3243383 COMPLETE WASH JET
for fixed arm



KROMO 18135

3243373 OPEN WASH JET ø 18 mm
for Dishwasher (KROMO) K40



KROMO 10212

KROMO 10266

3501226 STAINLESS STEEL JET
for Dishwasher pull-through (KROMO) - Series FX



KROMO 2200114

3086001 RING NUT 3/8" F WITH MESH
for Dishwasher pull-through (KROMO) - Series FX



KROMO

KROMO 2200116

KROMO 2200117

3743761 STRAIGHT WASH JET



KROMO 80300

3743754 CAP FOR END JET



KROMO 80304

3743760 COLLAR FOR WASH JET



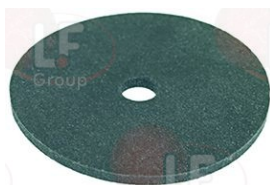
KROMO 80303

3743762 COLLAR FOR WASH JET



KROMO 80301

3186437 GASKET FLAT EPDM ø 40x5.5x2 mm
for terminal cap



KROMO 80305



Washing baskets and accessories

3055016 ANGLE FOOT FOR BASKET 120x120 mm
 colour: white
 to change glass racks from NORMAL to STACKABLE
 4 pieces are required



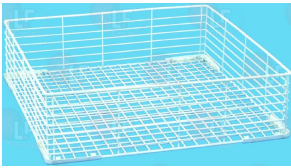
KROMO 10768

3055013 CUTLERY INSERT RACK ø 110x125 mm
 in plastic covered net



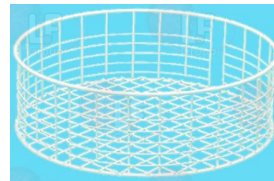
KROMO 15060

3055672 GLASS BASKET 500x500x130 mm



KROMO

3055233 GLASS RACK ø 350x110 mm
 in plastic covered wire



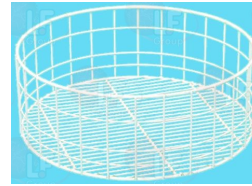
KROMO C21

3055242 GLASS RACK ø 370x120 mm
 in plastic covered iron



KROMO C07

3055234 GLASS RACK ø 400x140 mm
 in plastic covered wire



KROMO C16

3055230 GLASS RACK 350x350x115 mm
 in plastic covered wire



KROMO 10730

3055231 GLASS RACK 370x370x125 mm



KROMO C10

3055238 GLASS RACK 400x400x135 mm
 in plastic covered wire



KROMO C08

KROMO C121

3055369 GLASS RACK 450x450x140 mm
 in plastic covered wire



KROMO C75

KROMO C77



Suitable for:

3055010 GLASS RACK 500x500x120 mm
in plastic covered wire



KROMO C09

KROMO C44

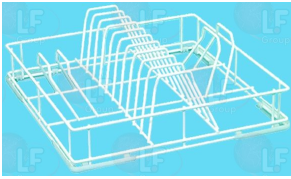
Suitable for:

3055232 PLATE RACK 370x370x100 mm
for 10 plates
in plastic covered wire



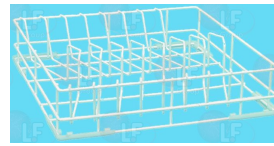
KROMO C03

3055239 PLATE RACK 400x400x80 mm
for 12 PLATES
in plastic covered wire



KROMO C31

3055237 PLATE RACK 450x450x100 mm
for 14 plates
in plastic covered wire



KROMO C76

3055698 SAUCER RACK 300x100x85 mm
made of plasticized wire - for 14 saucers



KROMO 10728

3055697 SUPPORT FOR BASKET ϕ 37 mm
dimensions 365x365 mm



KROMO C37

Watertight seals and rings

5017523 SEALING RING 30x42x7 mm
double lip retainer






















KROMO 13024

The data herewith contained may change without notice and LF SpA cannot be held responsible for possible errors stated or resulting by the use of this document. All rights reserved. No part of this publication may be reproduced without written permission by LF SpA.



Distributing Components, Spare Parts & Accessories in original quality worldwide

-
-  **LF SpA HEADQUARTERS**
via Voltri, 80 - 47522 Cesena (FC) ITALY
Tel. +39 0547 34 11 11 - Fax +39 0547 34 11 10
www.lfircambi724.it - www.lfircambi724.mobi
info@lfircambi.it
Export Dept.: Tel. +39 0547 34 11 50 - Fax: +39 0547 34 11 55
www.lfspareparts724.com - www.lfspareparts724.mobi
export@lfspareparts.com
-  **LF SpA HOUSEHOLD COMPONENTS DIVISION**
Via Padriciano, 34149 Trieste - Italia - AREA Science Park
Tel. +39 0547 34 12 42 - Fax +39 0547 34 12 48
www.lfspareparts724.com - www.lfspareparts724.mobi
info@lfspareparts.com
-  **EPGC Sas FRANCE**
13, Rue des Forts - 59960 Neuville en Ferrain
Tel. +33 (0)3 20 25 06 21
Fax +33 (0)3 20 25 34 12
www.epgc.com
www.epgc724.mobi
epgc@epgc.com
-  **LF GmbH GERMANY**
Junkersstrasse, 3 - D-82178 Puchheim - München
Tel. +49 89 89 45 78 66
Fax +49 89 89 45 78 88
www.lfersatzteile724.de
www.lfersatzteile724.mobi
info@lfersatzteile.de
-  **LF China REPUBLIC OF CHINA**
Room 403, No.2, Huadu Mansion, Lane 422, Huanghua Rd.
Minhang Dist. - 201103 Shanghai
Tel. +86 (0)21 33 53 66 31
Fax +86 (0)21 33 53 66 32
www.lfspareparts724.com
www.lfspareparts724.mobi
china@lfspareparts.com
-  **OOO LF RUSSIAN FEDERATION**
Ul. Anatoliya Zhivova, 8 - office 1 - 123100 Moscow
Tel./Fax +7 495 725 26 53
www.lfspareparts724.ru
www.lfspareparts724.mobi
info@lfspareparts.ru
-  **LF Repuestos Horeca S.L.U. SPAIN**
Poligono Industrial Carpetania - C/Miguel Faraday, 8 - 28906 Getafe
Tel. +34 91 477 91 00
Fax +34 91 477 90 81
www.lfrepuestos-horeca724.es
www.lfrepuestos724.mobi
info@lfrepuestos.es
-  **LF SpA Cesena (IT) Swiss Branch Steinhausen SWITZERLAND**
Sennweidstrasse, 45 - CH-6312 Steinhausen
Tel. +41 (0)41 760 15 80-1
Fax +41 (0)41 760 15 85
www.lfersatzteile724.ch
www.lfersatzteile724.mobi
info@lfersatzteile.ch
-  **LF Spare Parts Ltd. UNITED KINGDOM**
A10a Lakeside Business Park, Broadway Lane
South Cerney, Gloucestershire GL7 5XL
Tel. +44 (0)1285 86 16 25
Fax +44 (0)1285 86 39 49
www.lfspareparts724.co.uk
www.lfspareparts724.mobi
info@lfspareparts.co.uk
-
-  **AUSTRALIA AND NEW ZEALAND**
www.lfspareparts724.com
andrea.calvio@lfspareparts.com
-  **AUSTRIA**
www.lfersatzteile724.at
info@lfersatzteile.at
-  **BALKAN COUNTRIES**
www.lfspareparts724.com
matijaramov@lfspareparts.com
-  **BALTIC COUNTRIES**
www.lfspareparts724.com
inara.silina@lfspareparts.com
-  **CENTRAL AND EASTERN EUROPE**
www.lfspareparts724.cz
jiri.kremla@lfspareparts.cz
-  **DENMARK**
www.lfspareparts724.dk
michael.leth@lfspareparts.com
-  **JAPAN**
www.lfspareparts724.jp
hiroshi.ukai@lfspareparts.jp
-  **SOUTH KOREA**
www.lfspareparts724.com
fabio.doni@lfspareparts.com
-  **TURKEY**
www.lfyedekparca724.com
basar.ergun@lfyedekparca.com
-  **USA AND CANADA**
www.lfspareparts724.us
sauro.dallaglio@lfspareparts.us
howard.truitt@lfspareparts.us